

# Flat 47 Aqua

Lifeboat Quay

Poole, Dorset

BH15 1LS



# Flat 47 Aqua

Lifeboat Quay

Poole, Dorset

BH15 1LS

*Offers in excess of £400,000*

Welcome to Aqua - a picturesque two bedroom, two bathroom apartment in Lifeboat Quay. Situated in a prime location, residents can enjoy stunning views of the harbour and easy access to the vibrant town centre.

## *Summary of Accommodation*

2 bedroom waterfront apartment

Panoramic harbour views

Overlooks Lifeboat Quay

Huge wrap around penthouse like terrace

Close to Poole town centre

Excellent transport links

No forward chain

Allocated underground parking

Viewing is advised

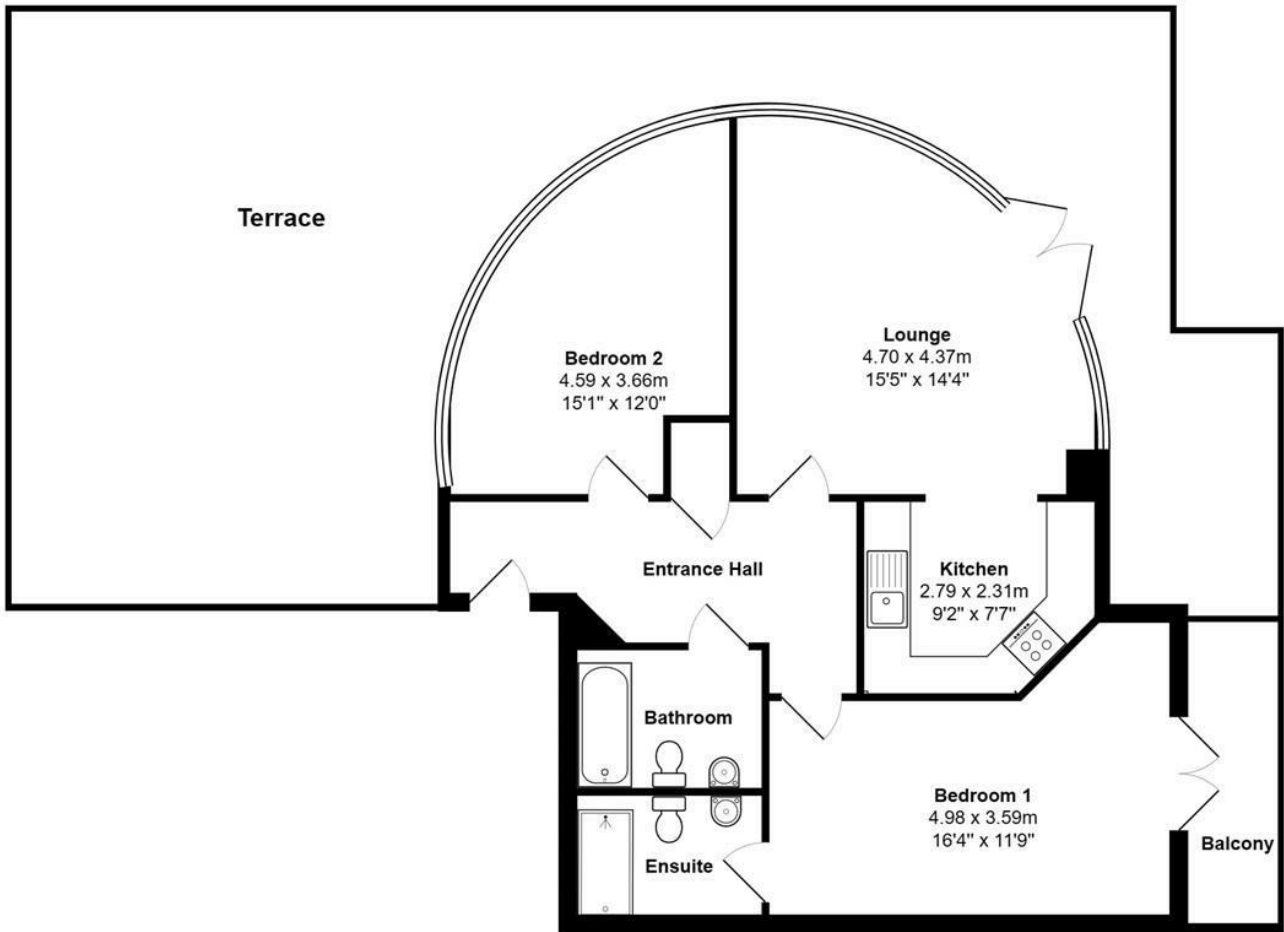




Upon entering, you are greeted by a hallway leading to a living area filled with natural light and panoramic harbour views, perfect for relaxing or entertaining guests. The kitchen is well-equipped with modern appliances, making it a joy to prepare delicious meals.

One of the standout features of this property is its proximity to the waterfront, allowing residents to take leisurely strolls along the quay or enjoy a meal at one of the charming cafes nearby. Whether you're a nature lover, a food enthusiast, or simply seeking a tranquil lifestyle by the sea, this apartment offers the perfect blend of comfort and convenience.

Don't miss out on the opportunity to make this apartment your home in the heart of Poole. Contact us today to arrange a viewing and experience the magic of Lifeboat Quay for yourself.



Total Area: 71.8 m<sup>2</sup> ... 773 ft<sup>2</sup> (excluding terrace, balcony)

## Lloyds Property Group

PROPERTY NAME

Flat 47 Aqua

LOCATION

BH15 1LS

TOTAL FLOOR AREA

773.00 sq ft

COUNCIL TAX

Band E BCP(Poole)

VIEWING ARRANGEMENTS

Telephone: +44 (0) 1202 708044

Email: [enquiries@lloydspropertygroup.com](mailto:enquiries@lloydspropertygroup.com)

Ref: 3542

Monday - Friday 09:00 - 18:00

Saturday 10:00 - 16:00

Sunday By appointment only

*Illustration for identification purposes only, measurements are approximate, not to scale*