

1 Links Road
Canford Cliffs, Poole
Dorset
BH14 9QP



1 Links Road

Canford Cliffs, Poole
Dorset
BH14 9QP

Price Guide £1,950,000

A simply stunning detached family home situated on a large plot with a resin bound carriage driveway with parking for numerous vehicles and situated in an extremely sought after tree-lined road close to Canford Cliffs Village.

Summary of Accommodation

- Integral double garage
- Double height entrance hall
- Open plan kitchen/dining/living area
- Separate living room
- Study • Media room • Utility room
- Boot room and guest cloakroom
- 4 double bedrooms (2 en-suite)
- Luxurious family bathroom





Arranged over just two floors and boasting an impressive 3,883 sq ft of luxury accommodation. The property has been interior designed throughout which, combined with the bespoke decor and specification, makes this home a true 'one off'.

On the ground floor there is a fantastic double height atrium which is a real feature boasting statement lighting and a bespoke staircase to the first floor.

An inner hallway leads to the large open plan kitchen/living/dining area. The kitchen incorporates high end built in appliances including a Quooker tap, wine fridge and two ovens. An inset TV and contemporary fire place are set on the feature stone clad wall.

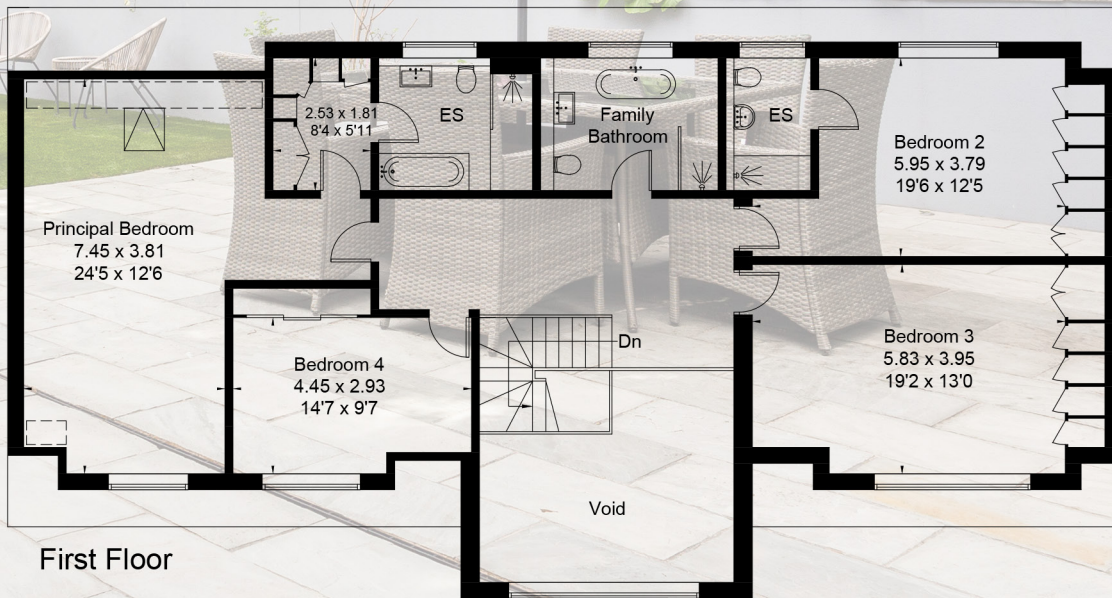
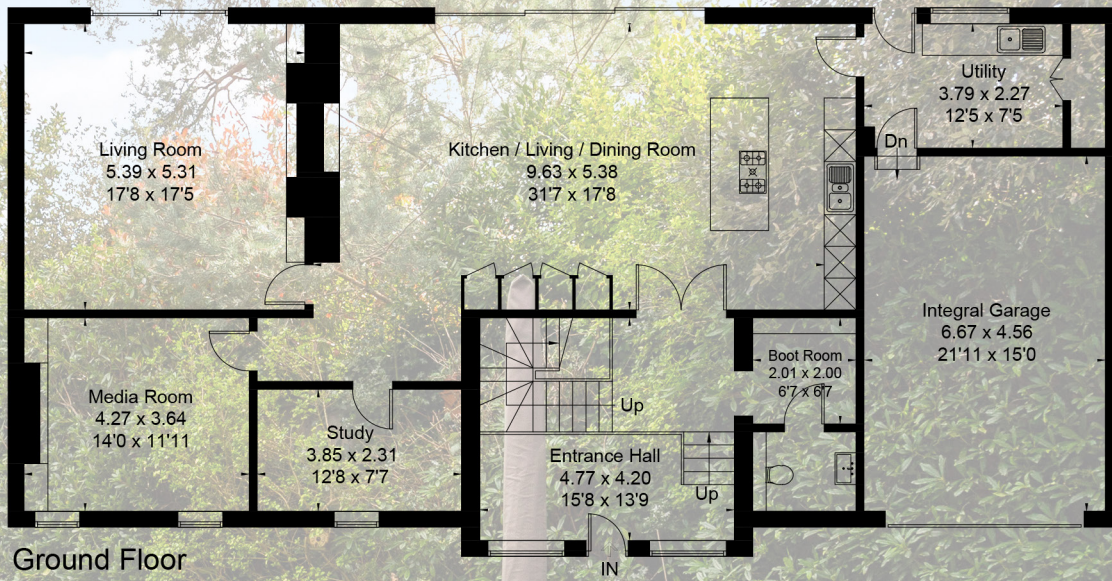
The separate formal living room is beautifully presented with a feature wall incorporating gas fire, inset TV and illuminated shelving.

There is a good sized utility room, integral garage and guest cloakroom.

Upstairs there are four double bedrooms, the principal of which boasts a walk in dressing room and en-suite bathroom. Bedroom Two comes with its own en-suite as well and there is a luxurious family bathroom serving Bedrooms Three and Four.

The rear garden faces south and is laid to patio and synthetic lawn.

Approximate Area = 356.1 sq m / 3883 sq ft and Garage
Including Limited Use Area (3.5 sq m / 37 sq ft)



Surveyed and drawn in accordance with the International Property Measurement Standards (IPMS 2: Residential)
fourwalls-group.com 296196

Lloyds Property Group

PROPERTY NAME

1 Links Road

LOCATION

Canford Cliffs

BH14 9QP

Approx Area = 356.1 sq m / 3883 sq ft & Garage

Including Limited Use Area (3.5 sq m / 37 sq ft)

VIEWING ARRANGEMENTS

Telephone: +44 (0)1202 708044

Email: enquiries@lloydspropertygroup.com

Ref: 3421 JA

Illustration for identification purposes only, measurements are approximate, not to scale