

6 Seacombe Road

Sandbanks, Poole

Dorset

BH13 7RJ



6 Seacombe Road

Sandbanks, Poole

Dorset

BH13 7RJ

Price Guide OIEO £1,000,000

The Old Pump House - a charming century old home, nestled in the heart of the world famous Sandbanks Peninsula. A renovation enthusiast's dream, offering endless potential to remodel and create your coastal haven - a blank canvas for your creative vision.

Summary of Accommodation

Fantastic project

Situated moments from the beach

Great sized plot

3 bedrooms

2 reception rooms





Constructed in circa 1924 as a home for the on-site pump master, this detached property provides great accommodation including 3 bedrooms and 2 reception rooms.

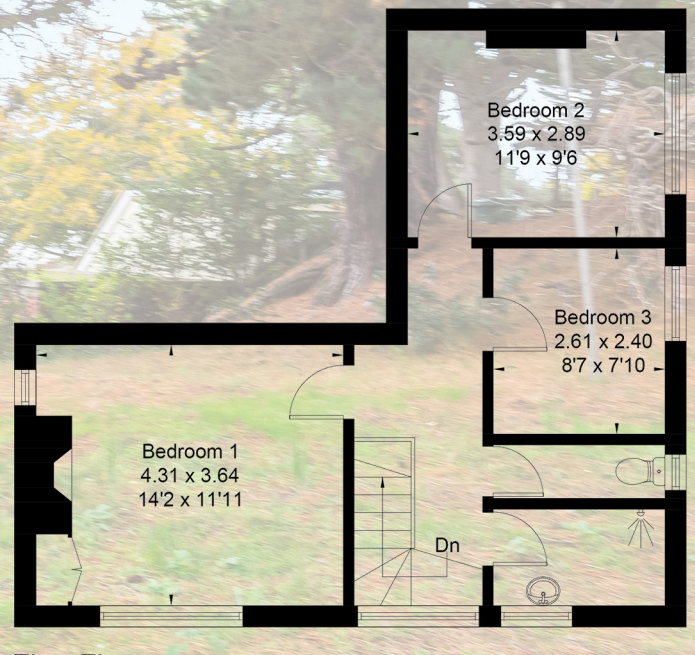
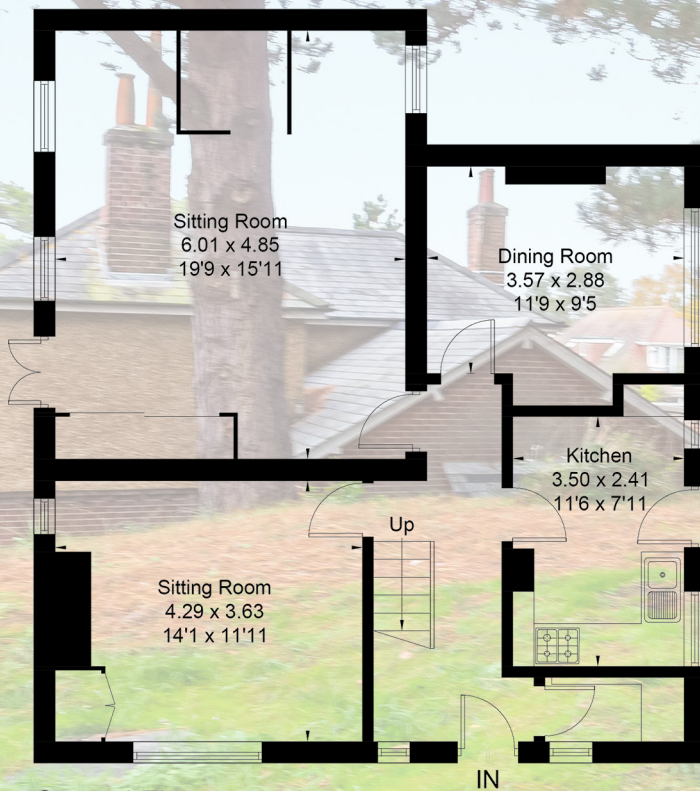
The property also has a large vaulted room that once housed the pumping equipment (now off site) and benefits from a large rear garden.

Subject to Planning Permission, the property could be turned into a larger remodelled home or replaced with a new dwelling. The property has a good size frontage with space to create a carport or garage. The rear garden is a good size and the property is being offered with vacant possession.

The stunning award winning sandy beaches are only a short stroll away, while the Royal Motor Yacht Club and Sandbanks Yacht Club offer great facilities for people looking to start or enjoy water sports in the harbour or even on past the chain ferry to the open sea.

The Sandbanks Chain Ferry crosses the short stretch of water across to the Purbecks, giving access to Shell Bay, Swanage and the rest of the magnificent Jurassic coastline and stunning Purbeck countryside.

Approximate Area = 128.9 sq m / 1387 sq ft
Including Limited Use Area (0.6 sq m / 6 sq ft)



Surveyed and drawn in accordance with the International Property Measurement Standards (IPMS 2: Residential)
fourwalls-group.com 309114

Lloyds Property Group

PROPERTY NAME

6 Seacombe Road

LOCATION

Sandbanks BH13 7RJ

Approximate Area = 128.9 sq m / 1387 sq ft

Including Limited Use Area (0.6 sq m / 6 sq ft)

VIEWING ARRANGEMENTS

Telephone: +44 (0)1202 708044

Email: enquiries@lloydspropertygroup.com

Ref: 3467 - GH

Illustration for identification purposes only, measurements are approximate, not to scale