



[www.hizzyproperty.co.uk](http://www.hizzyproperty.co.uk)





## Highcroft Lady Lane, Hadleigh, IP7 6AF

A simply stunning 4 bedroom detached family home presented in show room condition and offering a stylish and contemporary design along with superb open plan living space, two en suite's and beautiful garden with a sunny aspect. This highly impressive home which was built in 2017 is located towards the outskirts of Hadleigh, yet is still within easy reach of all the town's amenities and schools. The property offers high specification fixture and fittings throughout and the spacious living space includes a nice hallway, downstairs WC, generous sized living room, utility room and a superb light, bright and spacious open plan kitchen/dining and living space with twin double doors leading out into the garden. The kitchen has built in appliances including two ovens, hob, extractor, fridge/freezer, dishwasher and the space works really well for a family or entertaining. Upstairs, there is a spacious landing, four bedrooms, two of which have their own en suite shower rooms, and there is a family bathroom.

To the front there is a large block paved parking area which provides ample parking and there is side access which leads to the rear. The rear garden really is a lovely feature to the home and includes a very smart porcelain paved patio terrace, ideal for al fresco dining and a neat lawned garden with a timber shed.

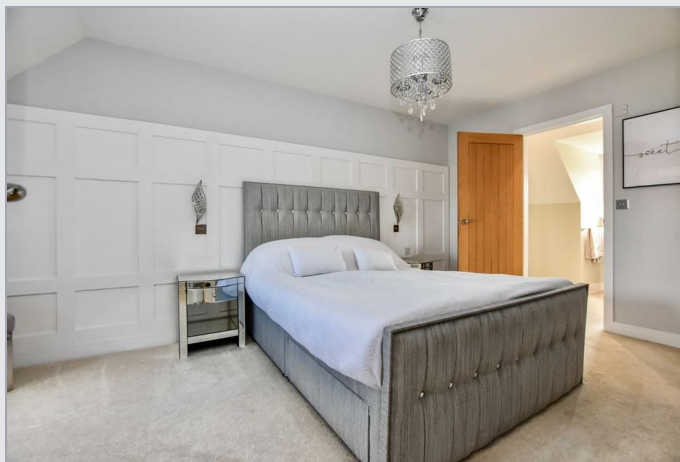




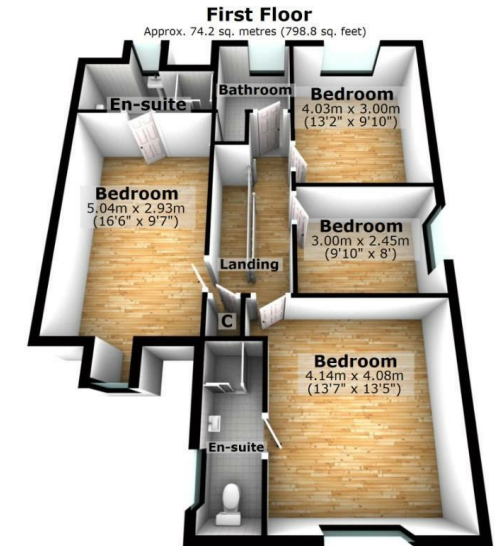
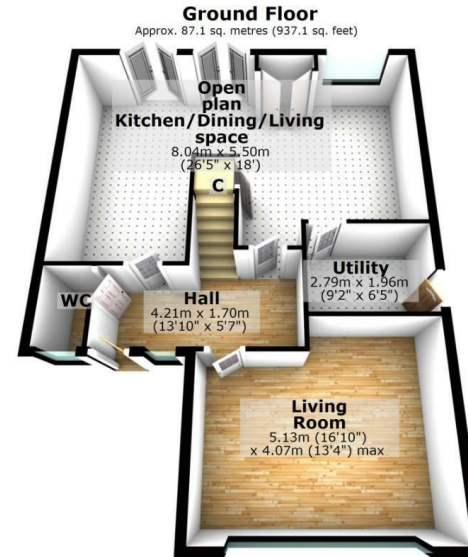
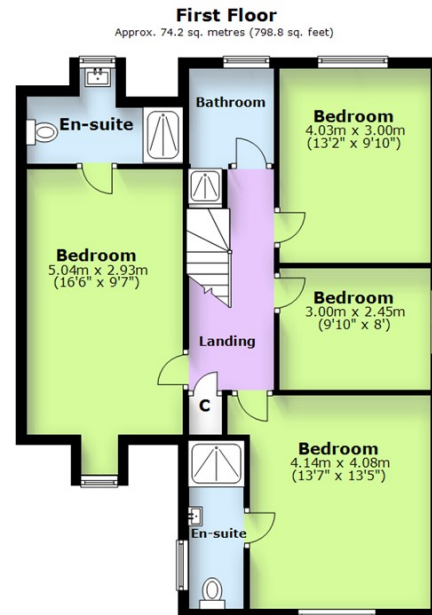
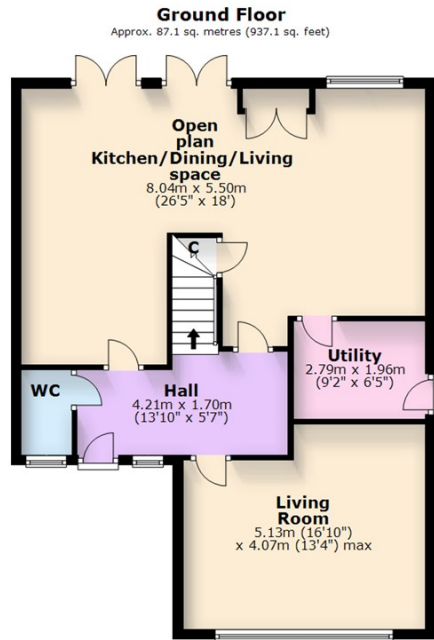
- Exceptionally well presented detached home
- Impressive open plan kitchen/dining/living space
- Plenty of off road parking

- Four first floor bedrooms
- Stunning & sunny rear garden with porcelain terrace
- Very handy utility room

- Two En suites, bathroom & WC
- Generous sized living room







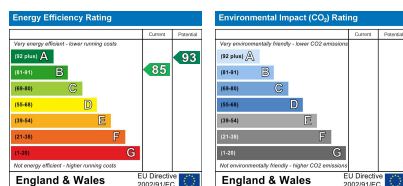
Total area: approx. 161.3 sq. metres (1735.9 sq. feet)

The floor plan is intended as a guide only.  
Plan produced using PlanUp.

Total area: approx. 161.3 sq. metres (1735.9 sq. feet)

The floor plan is intended as a guide only.  
Plan produced using PlanUp.

## EPC



These particulars, whilst believed to be accurate are set out as a general outline only for guidance and do not constitute any part of an offer or contract. Intending purchasers should not rely on them as statements of representation of fact, but must satisfy themselves by inspection or otherwise as to their accuracy. No person in this firm's employment has the authority to make or give any representation or warranty in respect of the property.



Ipswich Office:  
Epsilon House West Road  
Ipswich  
Suffolk  
IP3 9FJ

Hadleigh Office:  
Hadleigh Business Centre  
Crockett Road  
Hadleigh  
IP7 6RH

01473 875101  
hello@hizzyproperty.co.uk



**BEST**  
ESTATE AGENT GUIDE  
2021 : EXCEPTIONAL

SALES

