



The Old Joinery Ayres Lane, Burghclere, Newbury, RG20 9HG
01635 242040

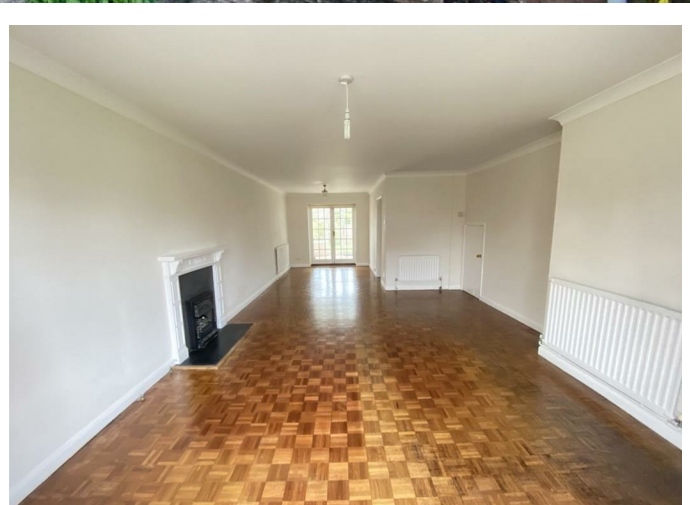
lettings

Meadow Close

£1,650 Per month



72 Meadow Close, Thatcham, Berkshire,
RG19 3RL

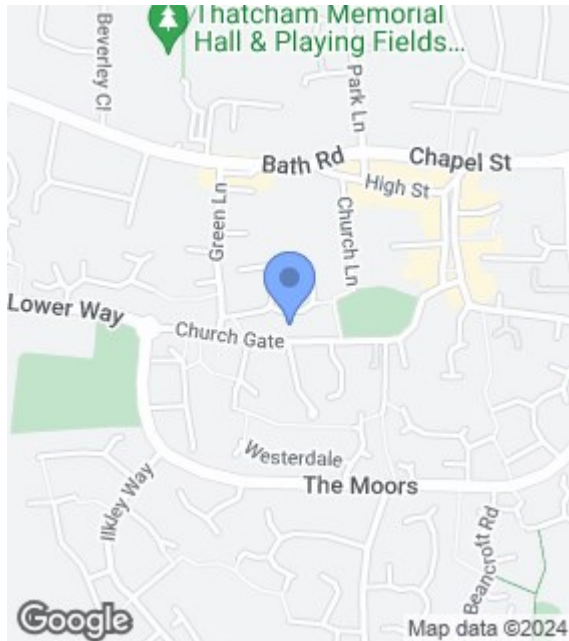


vw@wblettingsltd.co.uk | cb@wblettingsltd.co.uk | www.wblettingsltd.co.uk

The Old Joinery Ayres Lane, Burghclere, Newbury, RG20 9HG
01635 242040

72 Meadow Close
Thatcham
Berkshire
RG19 3RL

A lovely family home set in a beautiful location behind St Marys church in Thatcham. Overlooking the green this property is ideally suited to a family with children due to the close proximity of the local secondary school or a couple looking for a quiet area. The property has a large open plan lounge with dining area which leads onto the kitchen with appliances and also a conservatory - ideal as a home office, which leads onto the pretty rear garden. To the first floor are three good sized bedrooms (two with built in-storage) and the family bathroom. Further stairs lead up to the top floor fourth bedroom. Parking is within the development. One small pet may be considered.



- Lounge
- Dining area
- Kitchen
- Conservatory
- Garden
- Bedroom 1
- Bedroom 2
- Bedroom 3
- Bathroom
- Bedroom 4

Energy Efficiency Rating		Current	Potential
Very energy efficient - lower running costs			
(92 plus) A			
(81-91) B			
(69-80) C			
(55-68) D			
(39-54) E			
(21-38) F			
(1-20) G			
Not energy efficient - higher running costs			
		69	80
England & Wales			
EU Directive 2002/91/EC			

Environmental Impact (CO ₂) Rating		Current	Potential
Very environmentally friendly - lower CO ₂ emissions			
(92 plus) A			
(81-91) B			
(69-80) C			
(55-68) D			
(39-54) E			
(21-38) F			
(1-20) G			
Not environmentally friendly - higher CO ₂ emissions			
		67	78
England & Wales			
EU Directive 2002/91/EC			