



3 Bed House - Detached

11 Albany Road, Derby DE22 3LW
Offers Around £299,950 Freehold



3



2



1



D

**Fletcher
& Company**

www.fletcherandcompany.co.uk

- Highly Appealing, Traditional Bay Fronted Detached Family Home
- Potential to Extend to Rear (Subject to Planning Permission)
- Gas Central Heating & Double Glazing
- Lounge with Feature Fireplace with Log Burning Stove
- Kitchen & Dining Room
- Lean to Conservatory & Store
- Three Bedrooms & Bathroom/Shower Room
- Generous Size South Facing Garden
- Block Paved Driveway
- Offers Potential to be Improved – No Chain Involved

This three bedroom detached house with generous garden presents a rare opportunity to acquire a property that has been cherished by one owner.

The house is set within a generous plot, with the added advantage of potential to extend to the rear, subject to the necessary planning permissions. This feature opens up exciting possibilities for those looking to create their dream home.

Its prime location in Derby ensures easy access to local amenities, schools, and transport links, making it a convenient choice for modern living.

This is a unique opportunity to acquire a home with great potential for improvement and expansion.

The Location

The property's location is just off Uttoxeter New Road and close to the Royal Derby Hospital and within easy access of Derby City centre via several regular bus services.

Derby City centre offers a full range of amenities including the impressive Derbion shopping centre, the Cathedral Quarter with many boutiques, bars and restaurants along with Sadler Gate and Friar Gate. The location is also convenient for Kingsway Retail Park and local amenities at Littleover and Mickleover.

Excellent transport links are close by with easy access onto the A38, A50 and A52, which provide onward travel to the main motorway network and other regional centres.

Accommodation

Entrance Hall

10'5" x 6'3" (3.18 x 1.93)

With radiator and staircase leading to first floor.

Understairs Storage

6'3" x 4'2" (1.93 x 1.28)

Cupboard with window.

Lounge

13'4" x 11'10" (4.08 x 3.62)

With fireplace with log burning stove with raised quarry tiled hearth, radiator, double glazed bay window to front, coving to ceiling, double glazed window to side and internal panelled door.



Dining Room

11'1" x 8'1" (3.40 x 2.48)

With radiator, sealed unit double glazed bow window with tiled sill to side and sliding internal door giving access to lean to conservatory.



Kitchen

11'3" x 8'2" (3.44 x 2.49)

With one and a half stainless steel sink unit with mixer tap, wall and base units, fitted worktop, built-in four ring electric hob, plumbing for washing machine, plumbing for dishwasher, space for fridge/freezer, internal single glazed window and half glazed access door.



Lean to Conservatory

12'5" x 8'0" (3.80 x 2.44)

With single glazed windows and French doors opening onto garden.



Lean to Utility

8'2" x 5'4" (2.51 x 1.65)

With wash basin, cold water tap, single glazed window and glazed door giving access to garden.

WC

4'9" x 2'3" (1.47 x 0.70)

With low level WC.

First Floor Landing

9'1" x 7'5" (2.77 x 2.28)

With multi-paned bow window to side, built-in storage cupboard with cupboard above and access to roof space.

Bedroom One

15'10" x 13'5" (4.84 x 4.09)

With built-in cupboards, radiator, double glazed bay window to front.



Bedroom Two

11'3" x 8'2" (3.44 x 2.50)

With built-in wardrobe, radiator, double glazed window to side and double glazed window to rear.



Bedroom Three

8'7" x 6'5" (2.63 x 1.97)

With radiator, wall cupboard, built-in wardrobe and double glazed window to rear.



Bathroom/Shower Room

6'4" x 4'7" (1.94 x 1.40)

With walk-in shower with electric shower, pedestal wash handbasin, tiled splashbacks, tiling, radiator, storage cupboard and double glazed window.

Separate WC

4'7" x 2'4" (1.41 x 0.73)

With low level WC, tiling, radiator and double glazed window.

Garden

Being of a major asset and sale to this particular property is its generous size, south facing, enclosed rear garden, laid to lawn with a varied selection of shrubs, plants, trees, ornamental pond and two sheds.



Boiler Cupboard

4'6" x 2'1" (1.39 x 0.66)

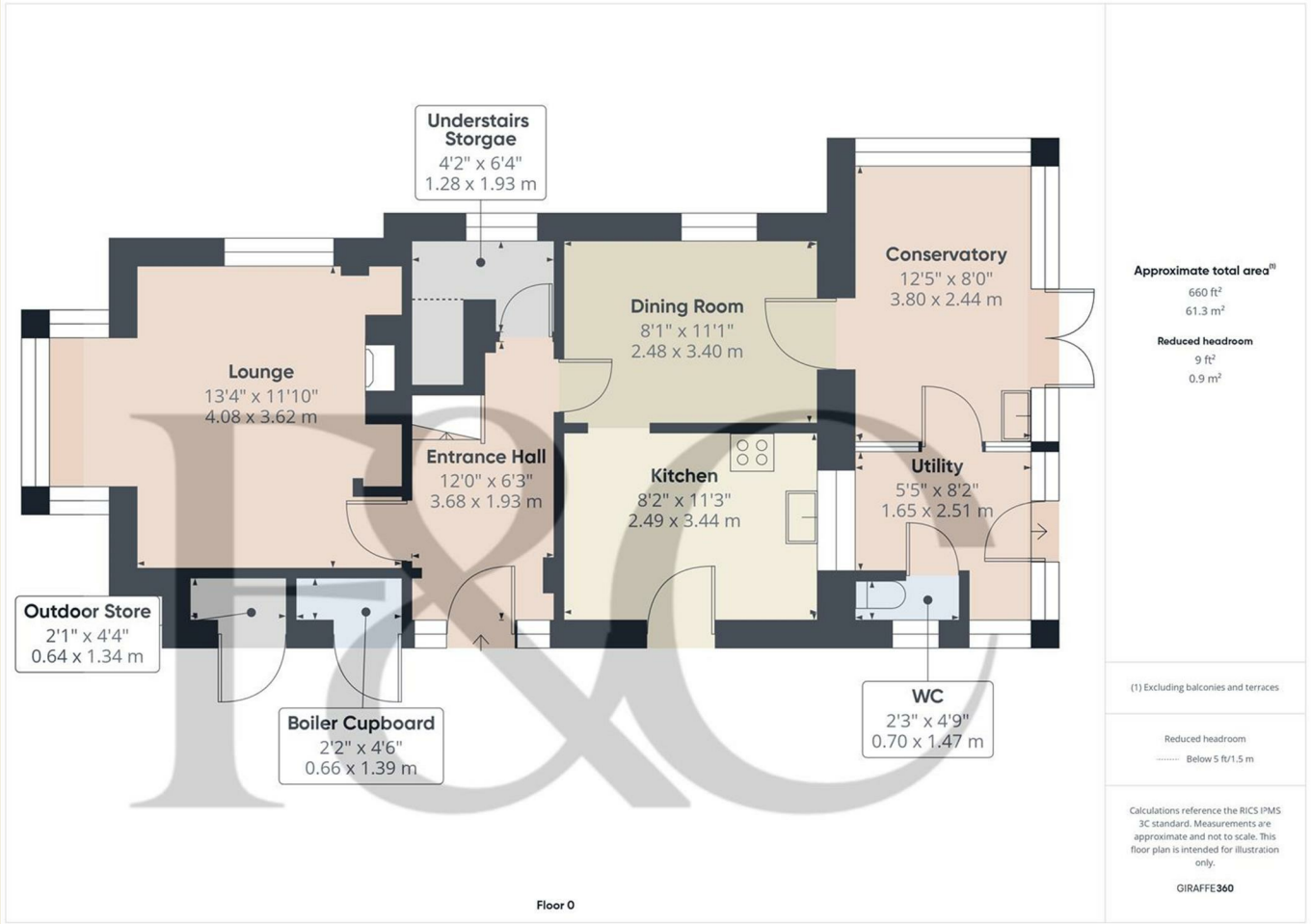
With boiler and radiator.

Outdoor Store
4'4" x 2'1" (1.34 x 0.64)
Providing storage.

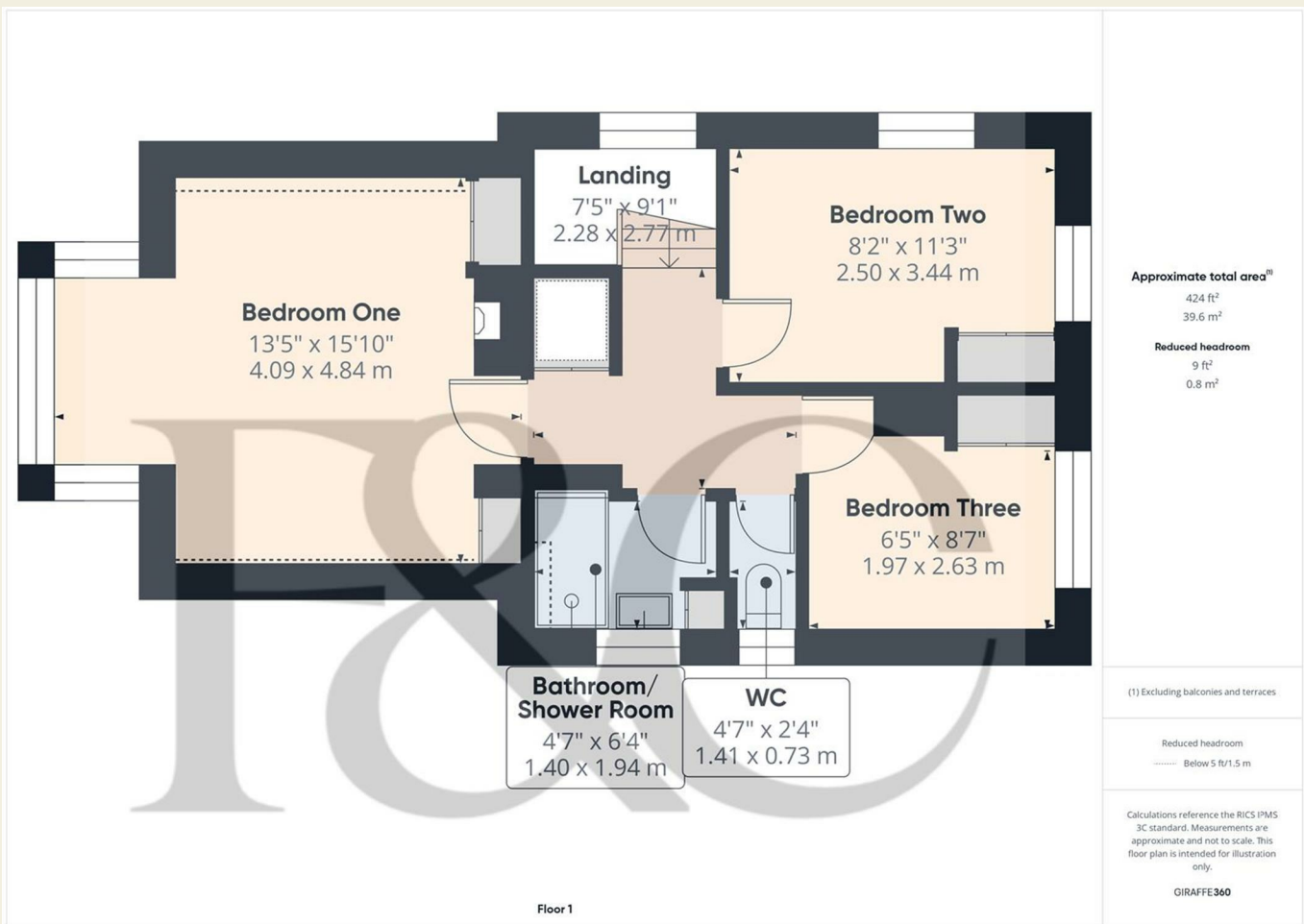


Driveway
To the front of the property is a double width, block paved driveway providing car standing space for two cars.

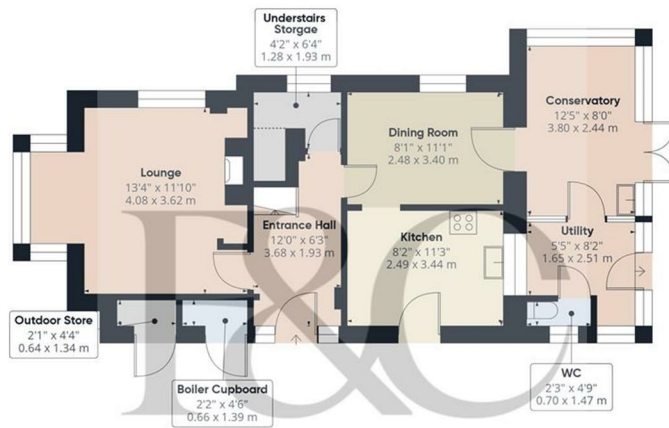
Council Tax Band - C
Derby City



These particulars do not constitute an offer or a contract neither do they form part of an offer or contract. The vendor does not make or give and Messrs. Fletcher & Company nor any person employed has any authority to make or give any representation or warranty, written or oral, in relation to this property. Whilst we endeavour to make our sales details accurate and reliable, if there is any point which is of particular importance to you, please contact the office and we will be pleased to check the information for you, particularly if contemplating travelling some distance to view the property. None of the services or appliances to the property have been tested and any prospective purchasers should satisfy themselves as to their adequacy prior to committing themselves to purchase.



These particulars do not constitute an offer or a contract neither do they form part of an offer or contract. The vendor does not make or give and Messrs. Fletcher & Company nor any person employed has any authority to make or give any representation or warranty, written or oral, in relation to this property. Whilst we endeavour to make our sales details accurate and reliable, if there is any point which is of particular importance to you, please contact the office and we will be pleased to check the information for you, particularly if contemplating travelling some distance to view the property. None of the services or appliances to the property have been tested and any prospective purchasers should satisfy themselves as to their adequacy prior to committing themselves to purchase.



Floor 0



Floor 1

Approximate total area⁽¹⁾

1084 ft²
100.9 m²

Reduced headroom

18 ft²
1.7 m²

(1) Excluding balconies and terraces


Reduced headroom

Below 5 ft/1.5 m

Calculations reference the RICS IPMS 3C standard. Measurements are approximate and not to scale. This floor plan is intended for illustration only.

GIRAFFE360

Energy Efficiency Rating

	Current	Potential
Very energy efficient - lower running costs		
(92 plus) A		
(81-91) B		
(69-80) C		
(55-68) D		
(39-54) E		
(21-38) F		
(1-20) G		
Not energy efficient - higher running costs		
	64	77
England & Wales	EU Directive 2002/91/EC 	

Environmental Impact (CO₂) Rating

	Current	Potential
Very environmentally friendly - lower CO ₂ emissions		
(92 plus) A		
(81-91) B		
(69-80) C		
(55-68) D		
(39-54) E		
(21-38) F		
(1-20) G		
Not environmentally friendly - higher CO ₂ emissions		
England & Wales	EU Directive 2002/91/EC 