

The Paddock, 19 Main Street, Ambaston, Derby, DE72 3ES

Offers Around £625,000

Freehold



- No Upward Chain
- Offers Superb Potential
- Extensive Detached Bungalow
- Entrance Hall, Lounge & Dining Room
- Fitted Kitchen & Conservatory
- Two Bedrooms & Bathroom
- Extensive Gardens - approx. 0.5 acre
- Useful Outbuildings & Garage
- Excellent Transport Links
- Rare to the Market





Summary

Offers Superb Potential - A generous, two double bedroom, detached residence sitting on a fabulous, underdeveloped plot measuring approximately half an acre. The property has been in the same ownership for many years and this is a rare opportunity to acquire a substantial bungalow which has potential for further development subject to any necessary planning consents. The property is sold with no upper chain and the oil fired accommodation comprises spacious entrance hall, generous living room, separate dining room, kitchen, sunroom/conservatory, two good sized bedrooms and bathroom.

Clearly a true feature of this sale are the grounds on which the property stands, measuring approximately half an acre, featuring a good sized frontage, extensive driveway/hard standing, useful three compartment shed featuring storage and oil tank. There is a rear patio with raised beds, extensive lawn looking onto a fabulous backdrop of mature trees.

F&C

The Location

Ambaston is a quiet hamlet tucked away amid attractive open countryside providing some delightful walks. The neighbouring villages of Shardlow and Elvaston combine to offer a range of amenities, the former offering a primary school, shop, selection of popular pubs/restaurants and impressive walks on the canal. Elvaston is most noted for the beautiful country park and castle which is a true delight. The village is conveniently located close to the A50 making it commuting distance from the A38 and M1 as well as Derby, Nottingham and East Midlands Airport.

Accommodation

Entrance Hall

14'11" x 6'10" (4.55 x 2.09)

An entrance door provides access to spacious entrance hall with central heating radiator and double multi pane door to living room.



Living Room

16'9" x 14'7" (5.11 x 4.46)

This is a generous room with extended brick fireplace, heather brown quarry tiled hearth, display alcoves, space for an electric fire, central heating radiator, decorative coving and a double glazed window to the front overlooking fore garden.



Dining Room

16'10" x 10'4" (5.15 x 3.16)

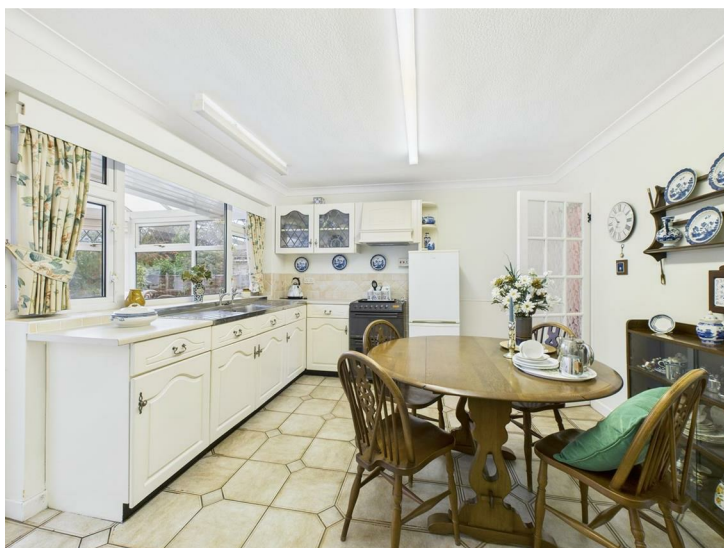
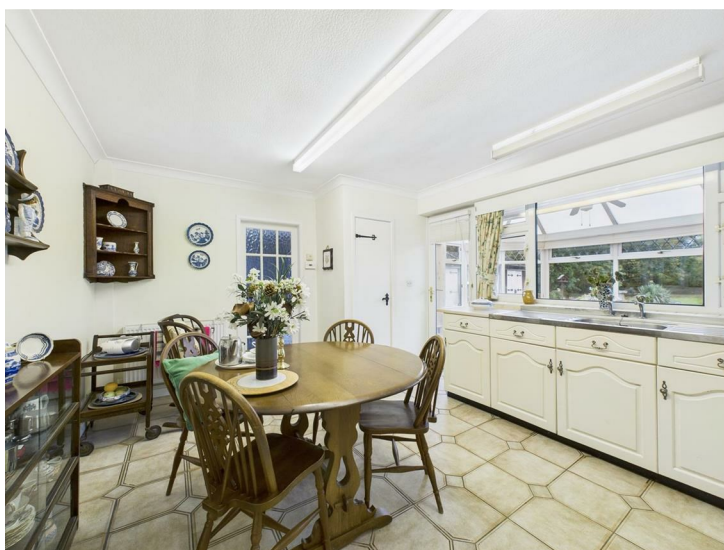
With two central heating radiators and double glazed, French doors with matching side lights to the rear garden. An internal multi pane door leads to the kitchen.



Kitchen

14'2" x 11'4" (4.34 x 3.46)

Featuring roll edge preparation surfaces, tiled surround, inset stainless steel sink unit, fitted base cupboards and drawers, complementary leaded glazed cupboards, appliance space suitable for a fridge/freezer and free-standing electric cooker, central heating radiator, pantry, double glazed window and door to the conservatory.



Conservatory

13'10" x 10'5" (4.24 x 3.18)

This is a brick base and double glazed framed construction with leaded quarter lights, tiled floor, ceiling mounted fan, central heating radiator and double glazed door to garden.



Double Bedroom One

13'8" x 12'11" (4.17 x 3.95)

With central heating radiator, fitted wardrobes with overhead storage and double glazed window to front.



Double Bedroom Two

14'2" x 10'9" (4.34 x 3.30)

With central heating radiator, fitted wardrobes with overhead storage, dressing table and double glazed window to rear.



Bathroom

11'2" x 5'10" (3.41 x 1.78)

Partly tiled with a suite comprising low flush WC, pedestal wash handbasin, panelled bath, separate shower, central heating radiator and double glazed window to rear.



Outside

The property sits on a fabulous plot measuring approximately half an acre. The property is set back behind post and rail fencing incorporating extensive fore garden, five bar gate leading to the driveway which extends down the side of the property and provides room for several vehicles. There is a beautiful outbuilding offering storage compartments which also houses the oil tank. Immediately to the rear of the property, is a patio area overlooking an extensive lawn with a backdrop of attractive, mature trees.



Garage

17'4" x 11'11" (5.30 x 3.64)

There is also a good sized garage with power, lighting and boiler.

Council Tax Band F



Approximate total area⁽¹⁾
1474 ft²
136.8 m²

(1) Excluding balconies and terraces

Calculations reference the RICS IPMS 3C standard. Measurements are approximate and not to scale. This floor plan is intended for illustration only.

GIRAFFE360



Energy Efficiency Rating

	Current	Potential
Very energy efficient - lower running costs		
(92 plus) A		
(81-91) B		
(69-80) C		71
(55-68) D		
(39-54) E	52	
(21-38) F		
(1-20) G		
Not energy efficient - higher running costs		
England & Wales	EU Directive 2002/91/EC	

Duffield Office

Duffield House
Town Street
Duffield
Derbyshire
DE56 4GD

01332 843390

duffield@fletcherandcompany.co.uk

Derby Office

15 Melbourne Court
Millennium Way
Pride Park
Derby
DE24 8LZ

01332 300558

derby@fletcherandcompany.co.uk

Willington Office

3 The Boardwalk
Mercia Marina
Findern Lane
Willington
Derbyshire
DE65 6DW

01283 241500

willington@fletcherandcompany.co.uk

The Paddock, 19 Main Street
Ambaston
Derby
DE72 3ES

Council Tax Band: F
Tenure: Freehold

