

3 Bed House - Detached

2b Scarsdale Avenue, Allestree, Derby DE22 2JZ

Offers Around £375,000 Freehold



3



1



1



D

**Fletcher
& Company**

www.fletcherandcompany.co.uk

- Highly Appealing Bay Fronted Detached Property
- Sought After Cul-de-Sac Location – Just off Allestree Lane
- Planning Permission Granted to Extend (Now Lapsed) Derby City 19/01397/FUL
- Lounge with Bay Window
- Living Kitchen/Dining Room
- Three Bedrooms & Family Bathroom
- Private Generous Sized Garden
- Block Paved Driveway & Garage
- Offers Excellent Potential
- Excellent Amenities at Park Farm Shopping Centre, Markeaton Park & Reputable Primary/Secondary Schools

Nestled in the desirable cul-de-sac of Scarsdale Avenue in Allestree, this highly appealing bay fronted detached house with private garden offers a perfect blend of comfort and potential.

One of the standout features of this property is its generous private garden, which offers ample space for outdoor activities and gardening enthusiasts alike. The garden is a tranquil retreat, perfect for enjoying sunny afternoons or hosting gatherings with family and friends.

Additionally, planning permission had been granted but now lapsed to extend the property, presenting an exciting opportunity for those looking to personalise their home further or increase its value.

Conveniently located just off Allestree Lane, residents will benefit from excellent amenities nearby, including the Park Farm Shopping Centre and the picturesque Markeaton Park, which are both just a short distance away. This prime location ensures that you are never far from essential services and recreational activities.

In summary, this detached house on Scarsdale Avenue is a fantastic opportunity for anyone seeking a charming home in a sought-after area, with the added advantage of potential for expansion.

The Location

Allestree is a very popular residential suburb of Derby, approximately three miles from the city centre and provides an excellent range of local amenities including the noted Park Farm shopping centre, excellent local schools and regular bus services. Local recreational facilities include Woodlands Tennis Club, Allestree Park and Markeaton Park together with Kedleston Golf Course. Excellent transport links are close by and fast access onto the A6, A38, A50 linking to the M1 motorway. The location is convenient for Rolls Royce, Derby University, Royal Derby Hospital and Toyota.

Accommodation

Ground Floor

Entrance Hall

12'3" x 3'11" (3.75 x 1.20)

With half glazed entrance door, radiator and staircase leading to first floor.

Lounge

12'11" x 11'4" (3.95 x 3.46)

With chimney breast with fireplace alcove and oak lintel, radiator, double glazed bay window with fitted blind to front and internal panelled door.



Living Kitchen/Dining Room



Dining Area

13'1" x 9'5" (4.01 x 2.89)

With chimney breast with fireplace alcove with oak lintel, open square archway leading to kitchen area and double glazed French doors opening on to private garden.



Kitchen Area

15'7" x 9'11" (4.75 x 3.03)

With one and a half sink unit with chrome mixer tap, wall and base fitted units with matching worktops, built-in four ring electric hob with concealed extractor hood, built-in electric fan assisted oven, plumbing for automatic washing machine, plumbing for dishwasher, space for fridge/freezer, radiator, two double glazed windows overlooking private rear garden and open archway leading into dining area.



First Floor Landing

10'0" x 4'3" (3.07 x 1.32)

With built-in storage cupboard housing the central heating boiler, double glazed window and access to roof space.

Bedroom One

10'2" x 9'11" (3.10 x 3.03)

With fitted wardrobes with cupboards above and matching bedside cabinets, radiator, double glazed window to front and internal panelled door.



Bedroom Two

11'5" x 9'10" (3.50 x 3.02)

With radiator, double glazed window overlooking rear garden and internal panelled door.



Bedroom Three

8'3" x 6'11" (2.54 x 2.11)

With radiator, built-in storage cupboard with shelving, double glazed window to front and internal panelled door.



Family Bathroom

6'9" x 5'8" (2.06 x 1.74)

With bath with electric shower over with shower screen door, pedestal wash handbasin, low level WC, fully tiled walls, heated chrome towel rail/radiator, double glazed window and internal panelled door.



Front Garden

To the front of the property is a low maintenance, gravelled garden which provides extra car standing space.

Rear Garden

Being of a major asset and sale to this particular property is it's lovely, level, generous sized, private, rear garden laid to lawn with a varied selection of shrubs, plants, children's soft play area and patio. Greenhouse, summerhouse and timber shed. Side access with gate.



Driveway

A double width block paved driveway provides car standing spaces for two cars and leads to a garage.



Garage

15'1" x 7'9" (4.62 x 2.38)

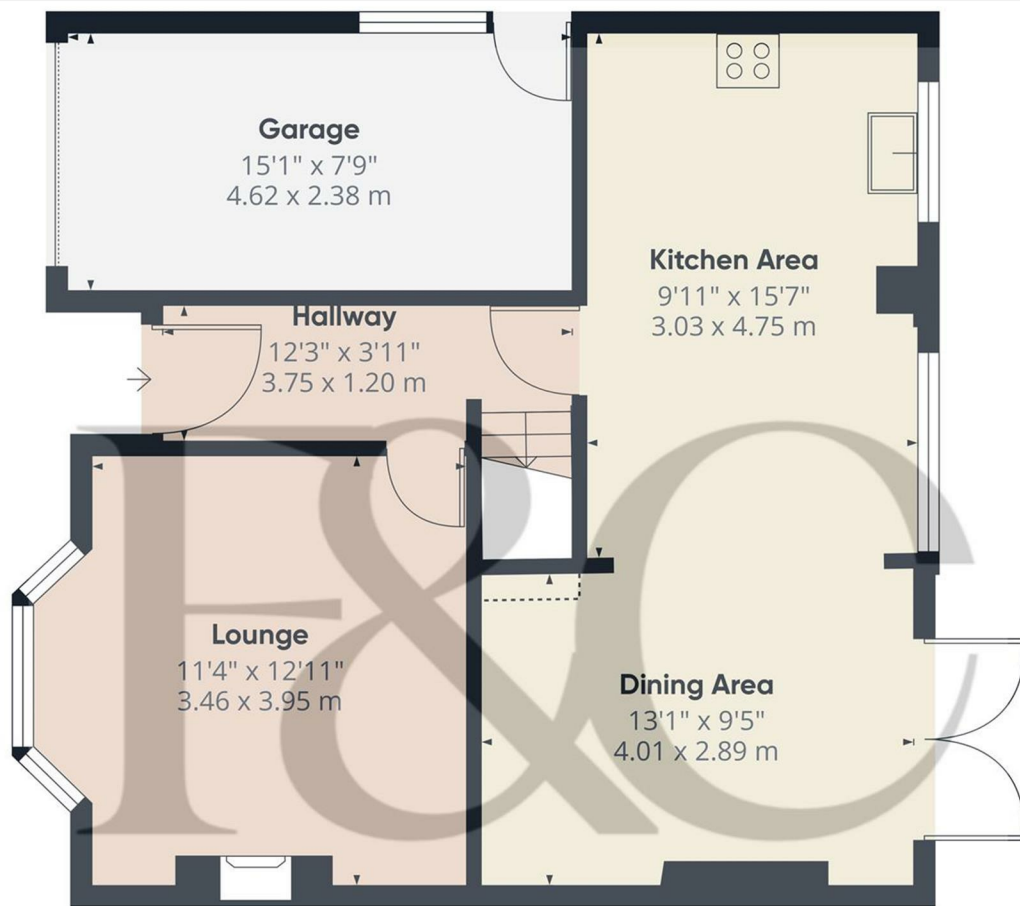
With power, lighting, side personnel door, side window and electric front door.



Council Tax Band
To Be Confirmed

Planning Permission To Extend
(Now Lapsed 2021) Derby City 19/01397/FUL





Floor 0

Approximate total area⁽¹⁾

616 ft²
57.3 m²

Reduced headroom

2 ft²
0.2 m²

(1) Excluding balconies and terraces

Reduced headroom

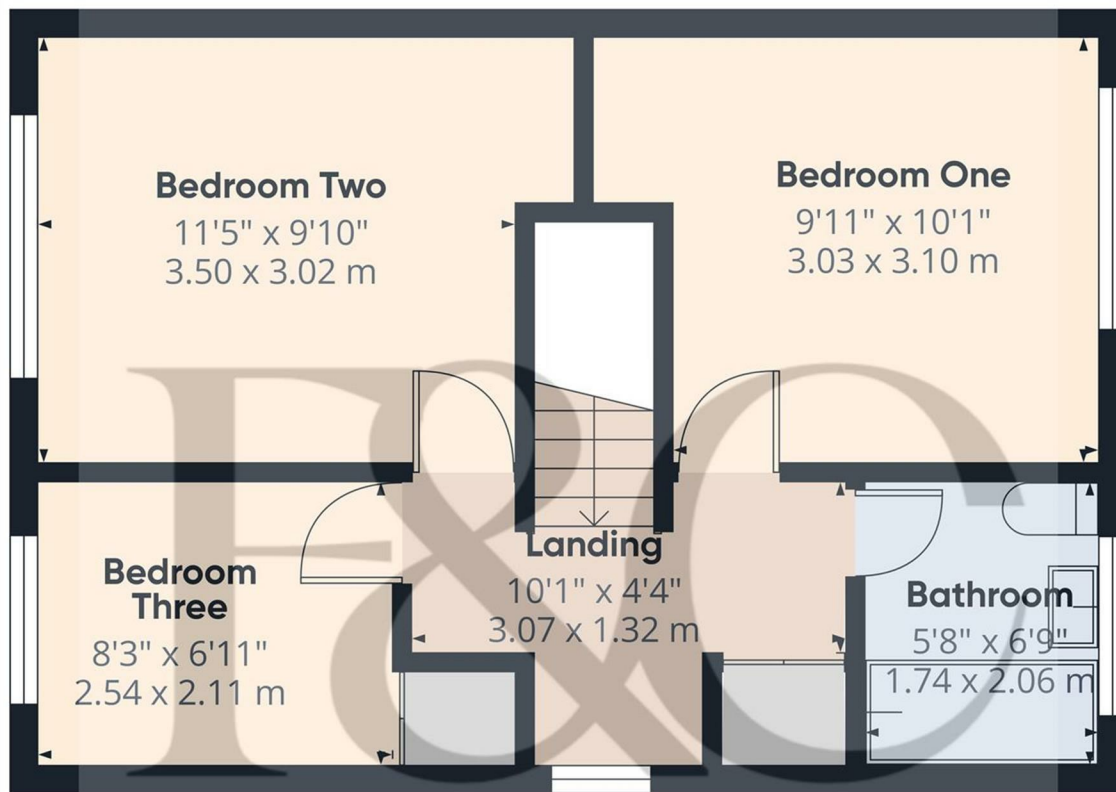
Below 5 ft/1.5 m

While every attempt has been made to ensure accuracy, all measurements are approximate, not to scale. This floor plan is for illustrative purposes only.

Calculations are based on RICS IPMS 3C standard.

GIRAFFE360

These particulars do not constitute an offer or a contract neither do they form part of an offer or contract. The vendor does not make or give and Messrs. Fletcher & Company nor any person employed has any authority to make or give any representation or warranty, written or oral, in relation to this property. Whilst we endeavour to make our sales details accurate and reliable, if there is any point which is of particular importance to you, please contact the office and we will be pleased to check the information for you, particularly if contemplating travelling some distance to view the property. None of the services or appliances to the property have been tested and any prospective purchasers should satisfy themselves as to their adequacy prior to committing themselves to purchase.



Approximate total area¹⁾
385 ft²
35.8 m²

(1) Excluding balconies and terraces


While every attempt has been made to ensure accuracy, all measurements are approximate, not to scale. This floor plan is for illustrative purposes only.

Calculations are based on RICS IPMS 3C standard.


GIRAFFE360

Floor 1

Energy Efficiency Rating

	Current	Potential
Very energy efficient - lower running costs		
(92 plus) A		
(81-91) B		
(69-80) C		
(55-68) D		
(39-54) E		
(21-38) F		
(1-20) G		
Not energy efficient - higher running costs		
	66	79
England & Wales	EU Directive 2002/91/EC 	

Environmental Impact (CO₂) Rating

	Current	Potential
Very environmentally friendly - lower CO ₂ emissions		
(92 plus) A		
(81-91) B		
(69-80) C		
(55-68) D		
(39-54) E		
(21-38) F		
(1-20) G		
Not environmentally friendly - higher CO ₂ emissions		
England & Wales	EU Directive 2002/91/EC 	

These particulars do not constitute an offer or a contract neither do they form part of an offer or contract. The vendor does not make or give and Messrs. Fletcher & Company nor any person employed has any authority to make or give any representation or warranty, written or oral, in relation to this property. Whilst we endeavour to make our sales details accurate and reliable, if there is any point which is of particular importance to you, please contact the office and we will be pleased to check the information for you, particularly if contemplating travelling some distance to view the property. None of the services or appliances to the property have been tested and any prospective purchasers should satisfy themselves as to their adequacy prior to committing themselves to purchase.