

Fletcher & Company

26 Hulland View, Allestree, DE22 2RD

Offers Over £349,950

Freehold



- Stylish, Extended Detached Bungalow
- Superbly Presented Throughout
- Spacious Open Plan Living/Dining Kitchen
- Double Glazed & Gas Central Heated
- Entrance Hall
- Master Bedroom with En-Suite
- Two Further Bedrooms & Well-Appointed Bathroom
- Driveway Providing Off-Road Parking
- Enclosed, Low Maintenance, Private Garden
- Popular Cul-de-Sac Location Close to Amenities





Summary

This is a rare opportunity to acquire a superbly extended, modern, three bedroom, detached bungalow in a popular cul-de-sac location in Allestree.

Thoughtfully extended and stylishly presented throughout this modern, three bedroom, detached bungalow occupies a popular cul-de-sac location in Allestree. The property is double glazed and gas central heated and comprises entrance hall, superb open plan living/dining kitchen, master bedroom with en-suite shower room, two further bedrooms and well-appointed bathroom.

To the front of the property is a paved driveway providing off-road parking and a low maintenance fore-garden. To the rear of the property is an enclosed, low maintenance, private garden.

F&C

The Location

The property's location in Allestree provides easy access to nearby Park Farm shopping centre with a range of amenities including supermarket, shops, restaurants and bars. Allestree Park and Markeaton Park are also close by. A regular bus service runs around Allestree and into Derby City centre and the property is close to nearby transport links including A38 and A50. Allestree has a good range of schooling at all levels including Lawn and Portway primary and Woodlands secondary.

Accommodation

Entrance Hall

9'10" x 4'7" (3.00 x 1.42)

A UPVC entrance door gives access to hallway with central heating radiator, recessed ceiling spotlighting, access to loft space and wood effect, herringbone style flooring.

Living/Dining/Kitchen

21'3" x 11'7" (6.48 x 3.55)



Living/Dining Area

With central heating radiator, feature vaulted ceiling, recessed ceiling spotlighting, wood effect herringbone style flooring and double glazed bifold doors giving access to garden.



Kitchen Area

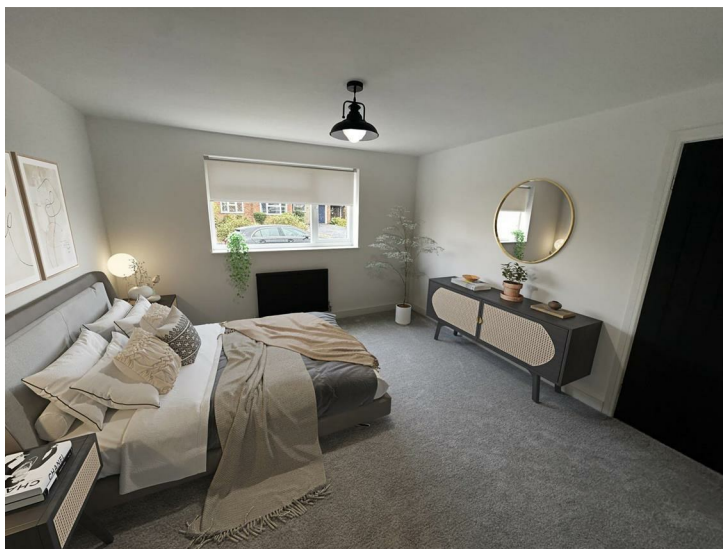
With marble effect preparation surfaces with matching upstands and breakfast bar, stylish matte black base cupboards and drawers, complimentary wall mounted cupboards, inset stainless steel sink unit with chrome mixer tap, four plate induction hob with glass extractor hood over and built-in electric oven beneath, integrated fridge freezer and dishwasher, appliance space suitable for washing machine, recessed ceiling spotlighting, feature vaulted high ceiling, wood effect herringbone style flooring and double glazed window overlooking the garden.



Bedroom One

11'9" x 11'9" (3.60 x 3.59)

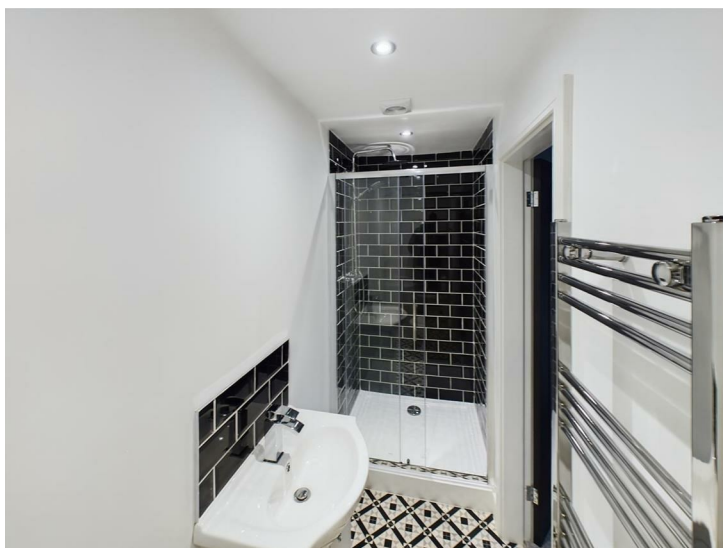
With central heating radiator and double glazed window to front.



En-Suite Shower Room

10'2" x 3'3" (3.12 x 1.01)

Partly tiled with a white suite comprising low flush WC, vanity unit with wash handbasin and cupboards beneath, tiled splashbacks, tile flooring, shower cubicle with shower attachment and rain head shower, chrome ladder style radiator and extractor fan.



Bedroom Two

9'4" x 8'1" (2.86 x 2.47)

With central heating radiator, fitted wardrobe and double glazed window to side.



Bedroom Three

9'6" x 8'4" (2.91 x 2.56)

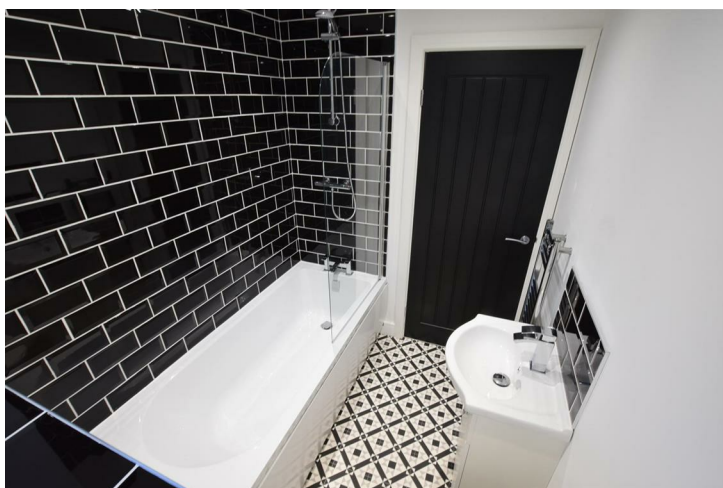
With central heating radiator and double glazed window to front.



Bathroom

6'1" x 5'8" (1.87 x 1.73)

Partly tiled with a white suite comprising low flush WC, vanity unit with wash hand basin and cupboards beneath, tiled splashbacks, tile flooring, panelled bath with chrome shower over, chrome ladder style radiator, spotlights to ceiling, extractor fan and double glazed obscure window.

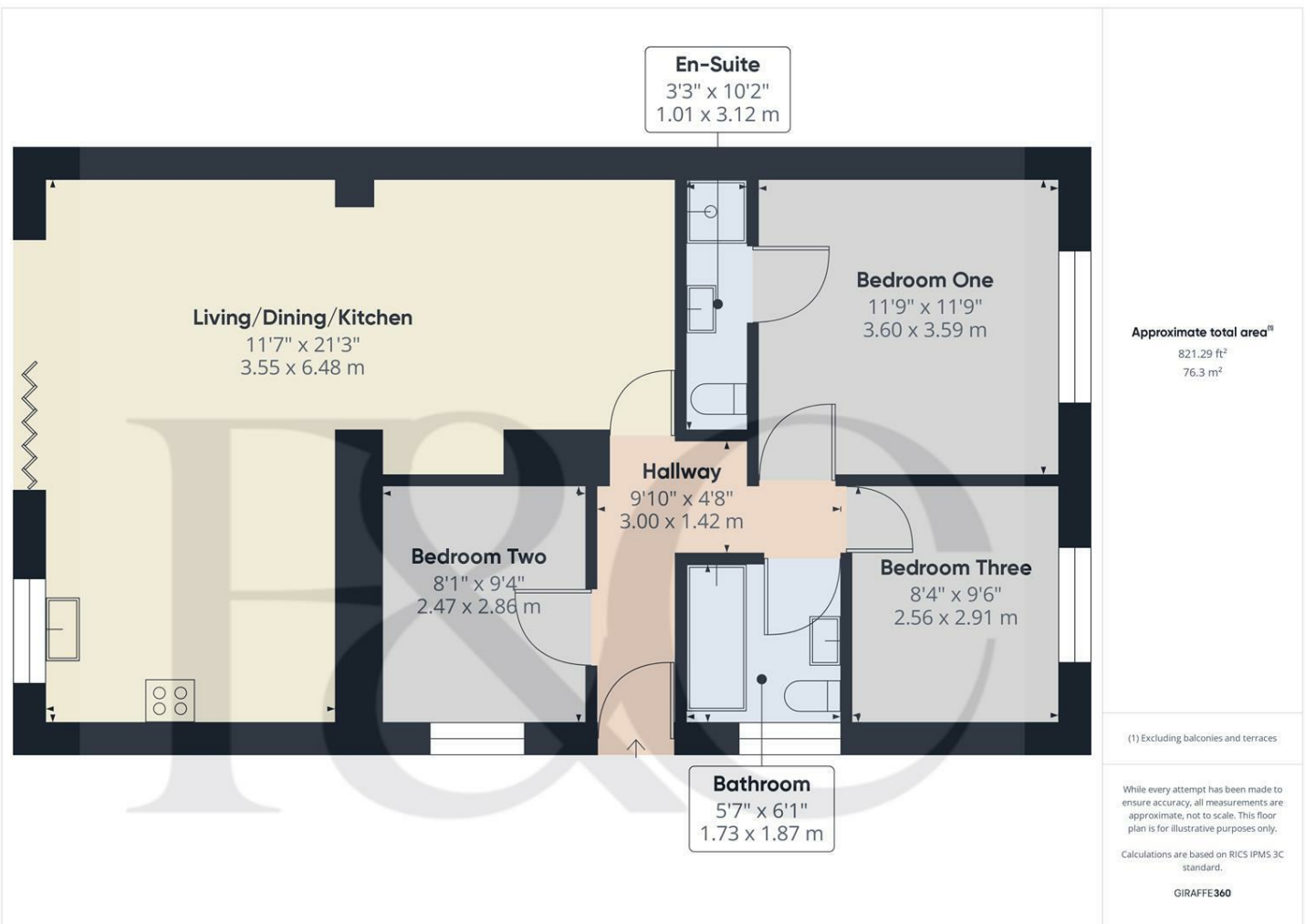


Outside

To the front of the property is a low maintenance fore-garden with gravelled area, further gravel border containing shrubs and plants, driveway providing off-road parking, timber fencing bordering the property and gate accessing the rear garden. To the rear of the property is a low maintenance garden bounded by timber fencing mainly laid to lawn with additional gravelled area to the foot of the garden.



Council Tax Band C





Energy Efficiency Rating

	Current	Potential
Very energy efficient - lower running costs		
(92 plus) A		
(81-91) B		85
(69-80) C		
(55-68) D	51	
(39-54) E		
(21-38) F		
(1-20) G		
Not energy efficient - higher running costs		
England & Wales	EU Directive 2002/91/EC	

Duffield Office

Duffield House
Town Street
Duffield
Derbyshire
DE56 4GD

01332 843390
duffield@fletcherandcompany.co.uk

Derby Office

15 Melbourne Court
Millennium Way
Pride Park
Derby
DE24 8LZ

01332 300558
derby@fletcherandcompany.co.uk

Willington Office

3 The Boardwalk
Mercia Marina
Findern Lane
Willington
Derbyshire
DE65 6DW

01283 241500
willington@fletcherandcompany.co.uk

26 Hulland View
Allestree
DE22 2RD

Council Tax Band: C
Tenure: Freehold

