

Fletcher & Company

159 Starflower Way, Mickleover, Derby, DE3 0FB

Price £500,000

Freehold



- Most Impressive & Comprehensively Upgraded Redrow-Built Detached Residence
- Occupying a Sought-After Location on the Hackwood Grange Estate in Mickleover
- Ideal Family Home - Superbly Appointed Throughout
- Double Glazing & Gas Central Heating
- Entrance Hall, Fitted Guest Cloakroom, Lounge
- Fabulous Open Plan L-Shaped Living Kitchen, Utility Room
- Master Bedroom with En-Suite Shower Room
- Three Further Double Bedrooms & Bathroom
- Lawned Rear Garden with Feature Raised Patio
- Detached Double Garage with Remote Door





Summary

Most impressive and comprehensively upgraded Redrow-built four bedroom detached residence occupying a sought-after location on the Hackwood Grange estate in Mickleover.

This is an opportunity to acquire a fabulous Redrow-built modern four bedroom detached residence on the Hackwood Grange estate. Formerly part of their Heritage range, the Harrogate model is cleverly designed for modern family life.

In brief, the accommodation comprises entrance hall, fitted guest cloakroom, living room, fabulous open plan L-shaped living kitchen with lounge area, dining area and high-specification fitted kitchen with a utility room off. The first floor semi-galleried landing leads to a master bedroom with en-suite shower room, three further double bedrooms and main bathroom.

The property occupies a corner plot set behind a lawned fore-garden with an adjacent double width driveway giving access to the detached double garage with remote up and over door, power and lighting. To the rear of the property is an enclosed garden with a raised patio area and steps down to a good sized lawn.

We would point out the property has been comprehensively upgraded by the current owner with approximately £35,000 of extras to include Silestone worktops with matching upstands, Cranbrook Stone kitchen, wine cooler, burglar alarm, flooring, fitted wardrobes and remote garage door, to name a few. A full list is available on request.

F&C

The Location

The property is located in the desirable suburb of Mickleover which features an extensive range of amenities predominantly in the village centre including a large supermarket, a selection of restaurants and bars, a regular bus service into Derby City centre and schooling available at all levels including John Port and Murray Park secondary schools.

Accommodation

Ground Floor

Entrance Hall

8'7" x 7'2" (2.62 x 2.20)

Panelled sealed unit double glazed and leaded entrance door with double glazed side lights provides access into the hallway with central heating radiator, staircase to the first floor with feature balustrade and handrail and panelled doors to the lounge and stunning open plan living kitchen/dining room.

Fitted Guest Cloakroom

6'6" x 3'5" (2.00 x 1.05)

With a white suite comprising low flush WC, half pedestal wash handbasin, central heating radiator, recessed ceiling spotlighting and uPVC double glazed window to the side.

Lounge

15'0" x 11'10" (4.59 x 3.61)

With central heating radiator, tv satellite point and uPVC double glazed window to the front.



Stunning Open Plan L-Shaped Living Kitchen

25'9" x 22'3" (7.85 x 6.80)



Dining Area

Featuring Porcelanosa wood effect tiled flooring, recessed ceiling spotlighting, tv aerial point and uPVC double glazed window to the front.



Kitchen Area

With a high-specification fitted kitchen featuring Silestone preparation surfaces with matching upstands, inset stainless steel sink unit with mixer tap, a stylish range of fitted base cupboards and drawers with a complementary range of wall mounted cupboards having underlighting, matching island/breakfast bar with a further range of fitted cupboards and large wine cooler, recessed power supply and inset four plate gas hob with extractor hood over, double AEG oven and grill, integrated dishwasher, fridge and freezer, continuation of the Porcelanosa wood effect tiled flooring, recessed ceiling spotlighting and uPVC double glazed window to the rear.



Living Area

With central heating radiator, continuation of the Porcelanosa wood effect tiled flooring, recessed ceiling spotlighting, uPVC double glazed French doors opening onto the rear garden and door to the utility room.



Utility Room

6'6" x 6'4" (2.00 x 1.94)

With the continuation of Silestone worktops and matching upstands, inset stainless steel sink unit with mixer tap, two fitted cupboards, wall mounted gas-fired boiler, appliance space suitable for a washing machine and tumble dryer, central heating radiator, panelled double glazed door to the garden and internal panelled door to the fitted guest cloakroom.



First Floor

Landing

Semi-galleried landing with the continuation of feature balustrade, access to loft space, door to the airing cupboard housing the hot water cylinder, central heating radiator and doors to four bedrooms and family bathroom.

Master Bedroom

12'1" x 10'1" (3.70 x 3.08)

With central heating radiator, tv aerial point, built-in wardrobes, recessed ceiling spotlighting, two central heating radiators, two uPVC double glazed windows to the front offering pleasant views and door to the well appointed en-suite shower room.

En-Suite

8'3" x 5'5" (2.54 x 1.67)

With low flush WC, half pedestal wash handbasin, large walk-in shower cubicle with rainfall shower and further hand shower attachment, chrome towel radiator, recessed ceiling spotlighting, shaver point and extractor fan.



Bedroom Two

12'1" x 10'2" (3.69 x 3.10)

With central heating radiator, fitted wardrobes and uPVC double glazed window to the rear.



Bedroom Three

11'4" x 10'2" (3.46 x 3.10)

With central heating radiator and uPVC double glazed window to the front.



Bedroom Four

11'3" x 9'4" (3.45 x 2.86)

With central heating radiator and uPVC double glazed window to the rear.



Family Bathroom

7'3" x 6'0" (2.22 x 1.84)

Partly tiled with a stylish white suite comprising low flush WC, half pedestal wash handbasin, panelled bath with shower over, chrome towel radiator, tiled floor, recessed ceiling spotlighting, shaver point and uPVC double glazed window to the rear.



Outside

Front Garden

To the front of the property is a pleasant lawned fore-garden and pathway.

Rear Garden

To the rear of the property is a raised terrace/patio with steps down to a good sized garden enclosed by closed-slat timber fencing, cold water outdoor hose tap and side gate leading to the detached double garage.

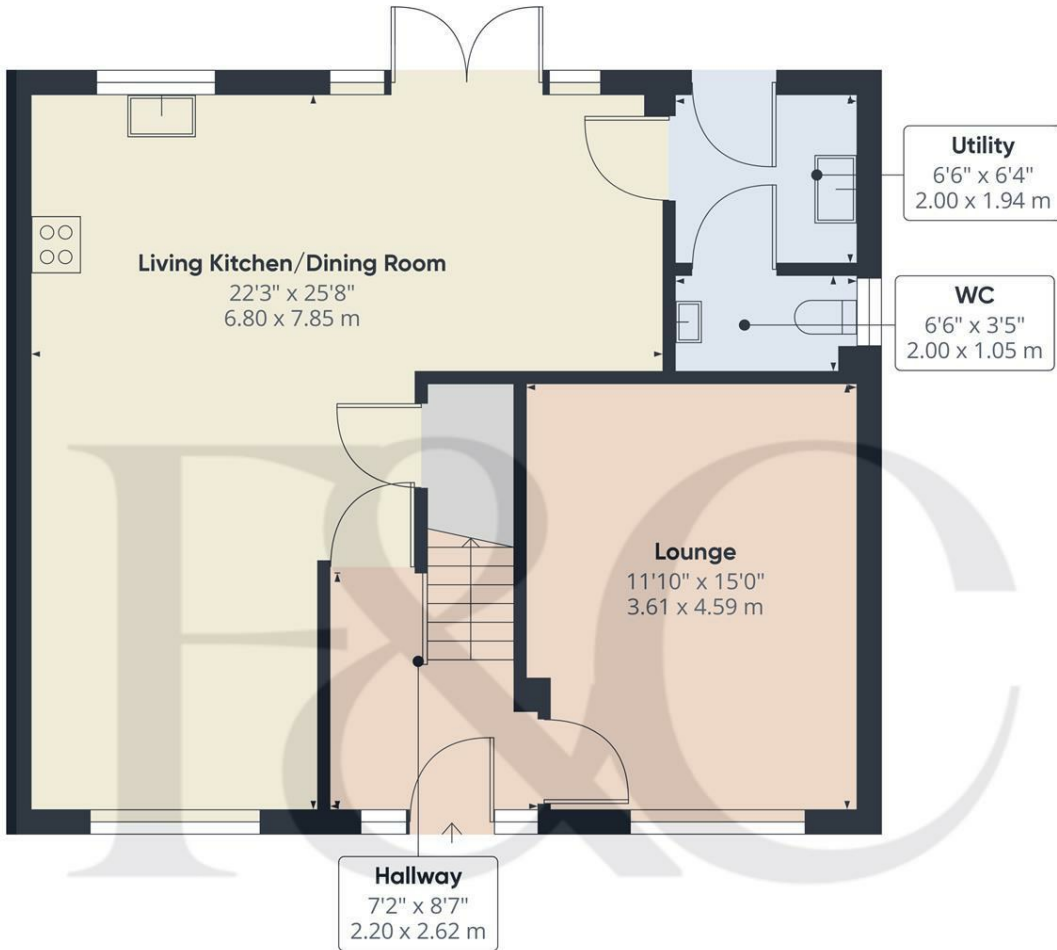


Detached Double Garage

With remote door, power and lighting.



Council Tax Band E - South Derbyshire



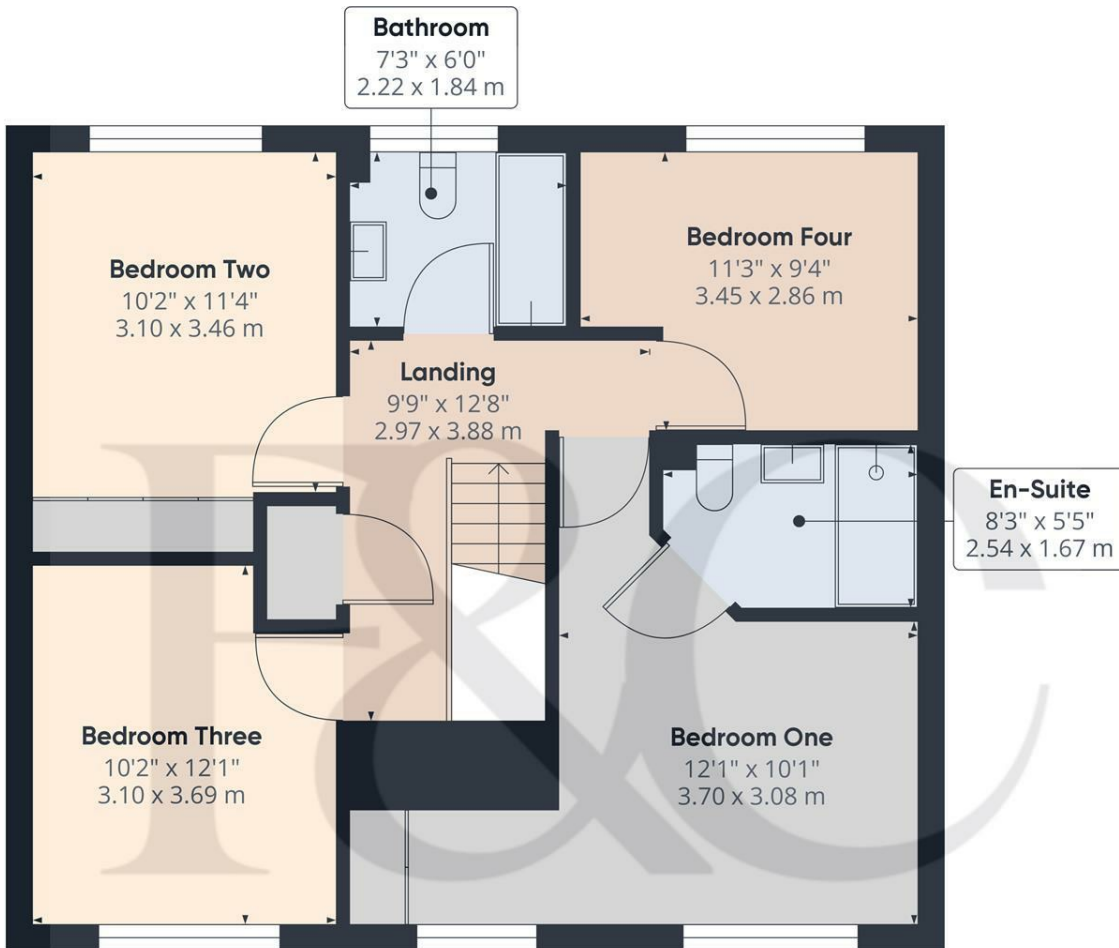
Floor 0

Approximate total area⁽¹⁾
745.1 ft²
69.22 m²

(1) Excluding balconies and terraces

While every attempt has been made to ensure accuracy, all measurements are approximate, not to scale. This floor plan is for illustrative purposes only.

GIRAFFE360



Floor 1

Approximate total area⁽¹⁾
685.75 ft²
63.71 m²

(1) Excluding balconies and terraces

While every attempt has been made to ensure accuracy, all measurements are approximate, not to scale. This floor plan is for illustrative purposes only.

GIRAFFE360



Duffield Office

Duffield House
Town Street
Duffield
Derbyshire
DE56 4GD

01332 843390
duffield@fletcherandcompany.co.uk

Derby Office

15 Melbourne Court
Millennium Way
Pride Park
Derby
DE24 8LZ

01332 300558
derby@fletcherandcompany.co.uk

159 Starflower Way
Mickleover
Derby
DE3 0FB

Council Tax Band: E
Tenure: Freehold



Energy Efficiency Rating

	Current	Potential
<i>Very energy efficient - lower running costs</i>		
(92 plus) A		
(81-91) B		
(69-80) C		
(55-68) D		
(39-54) E		
(21-38) F		
(1-20) G		
<i>Not energy efficient - higher running costs</i>		
England & Wales	EU Directive 2002/91/EC	