

Fletcher & Company

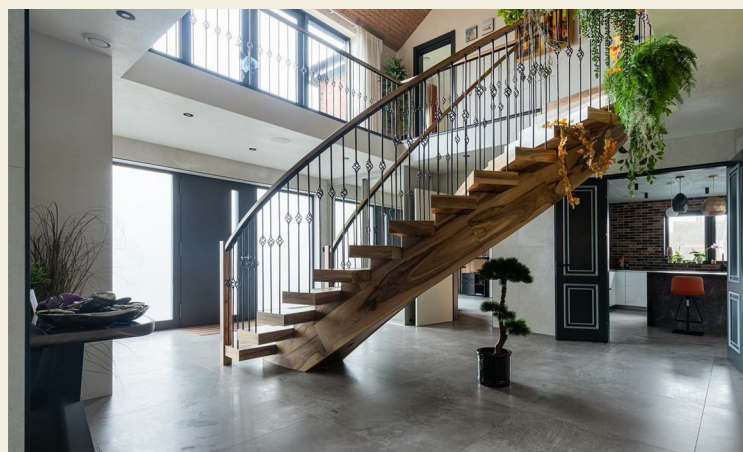
Sunglow 11 Chevin Road, Strutts Park, Derby, DE1
3EX

Price £1,200,000

Freehold



- Detached Residence Built in 2020 to a Very Hi-Specification
- Extremely Spacious & Well Proportioned Accommodation
- Stunning Entrance Hall with Feature Staircase Leading to a Fully Galleried Landing
- Large Open Plan L-Shaped Living/Dining Kitchen
- Separate Large Study/Sitting Room
- Playroom/Games Room
- Four Large Double Bedrooms, Master with Dressing Room & En-Suite Shower Room, Bathroom
- Gated Driveway for Several Cars, Integral Garage
- Low Maintenance Rear Garden with Outbuilding Incorporating Sauna & Shower Room
- Internal Viewing Essential





Summary

CLOSE TO DARLEY PARK - Most impressive and recently constructed large four double bedroom detached residence occupying a highly desirable location, just North of Derby City Centre.

This true rarity on the market, Architect-designed modern detached residence is built to a hi-specification throughout, completed in 2020. This home features very generously proportioned rooms ideal for a large family with quality fittings throughout and a truly stylish and individual feel.

The accommodation features a combination of double and triple glazed windows, underfloor heating to the ground floor, infra-red panel heating to the first floor, a Mechanical Heat Recovery System as well as Philips Hue smart lighting and Sonos surround sound system.

The ground floor comprises on entrance, a fabulous large entrance hall overlooked by a fully galleried landing with central sweeping staircase to the first floor, fitted guest cloakroom and cloaks cupboard, large L-shaped living kitchen comprising lounge area, dining area and hi-specification bespoke German kitchen by Creative Interiors, separate large study/second sitting room and additional playroom/games room. The first floor fully galleried landing leads to a large principal double bedroom with walk-in wardrobe and superbly appointed en-suite shower room, three further large double bedrooms and a superbly appointed main bathroom.

The property is set within gated grounds with video remote entry system and pedestrian gate with further electric gates leading to the extensive car standing/driveway and integral garage.

To the rear of the property is a private low maintenance garden with terrace, artificial lawn and block paved pathway/patio bound by hedging and fencing. A further feature includes a timber structure/outbuilding which contains a hobby/beauty room with a shower room and sauna off and attached to this is a timber framed gazebo with an external sound system.

F&C

The Location

The property's location on Chevin Road nestles between the prominent Duffield Road and Belper Road on a quiet side road with minimal traffic, whilst within extremely easy access of a full range of amenities in Derby City Centre as well as beautiful Darley Park and the River Derwent. As such, provides easy access to a varied range of amenities in Derby City Centre including the Derbion Shopping Centre, a selection of restaurants, cafes and bars in and around Sadler Gate and Irongate and is within close proximity of excellent schooling including Landau Forte, Allestree Woodlands Secondary school and Saint Benedict Academy, as well as primary schooling including Walter Evans in Darley Abbey and Markeaton Primary on Bromley Street. This location also provides easy access to excellent transport links including the A38 and the A52.

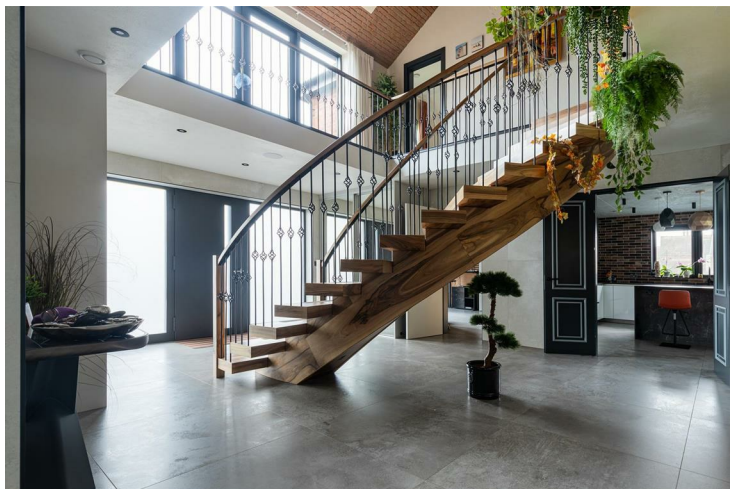
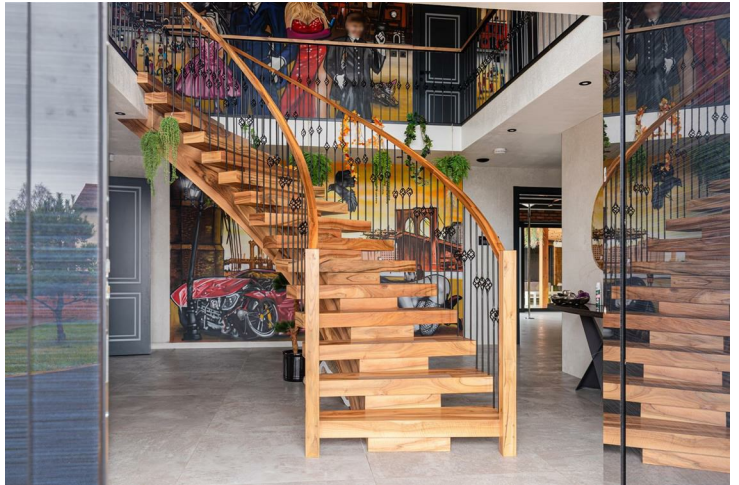
Accommodation

Ground Floor

Fabulous Entrance Hall

22'1" x 17'11" (6.74 x 5.47)

The property is accessed via an impressive large entrance door with tinted glazed side lights which leads into the fabulous entrance hall, the centre piece being an engineered walnut staircase with wrought iron balustrade sweeping up to the fully galleried landing, doors to the stunning open plan L-shaped living kitchen, study/second sitting room, playroom/games room and fitted guest cloakroom along with the benefit of a large cloaks cupboard. There is a beautiful selection of floor coverings throughout the house including Italian porcelain tiles.



Fitted Guest Cloakroom

6'9" x 4'5" (2.08 x 1.37)

Fitted with a stylish suite in white comprising low flush WC, vanity unit with wash handbasin and mixer tap with useful drawer beneath as well as a walk-in shower and attractive glazed tiled surrounds.



Stunning Open Plan L-Shaped Living Space



Kitchen Area

27'9" x 15'1" (8.47 x 4.62)

This hi-specification bespoke German kitchen fitted by Creative Interiors of Derby features a central island/breakfast bar, an extensive range of worktops with inset Franke sink unit with Quooker instant filtered/boiling water tap, base units with a white gloss finish, a range of integrated appliances including two Neff ovens, induction hob with extractor hood over and fridge/freezer as well as a wine cooler and coffee machine.



Dining Area

With superb views over the garden and open access into the lounge area.



Lounge Area

18'4" x 13'3" (5.59 x 4.06)

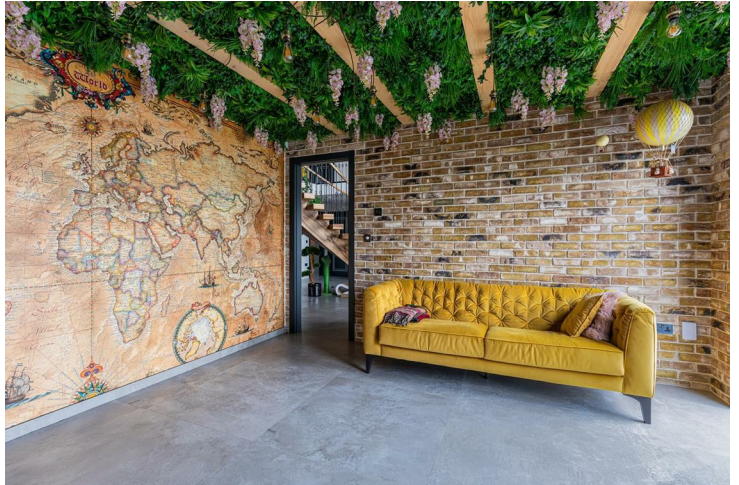
Again, with fabulous views over the garden.



Large Study/Second Sitting Room

15'1" x 13'6" (4.62 x 4.12)

With the continuation of underfloor heating and three tinted double glazed windows to the front.



Playroom/ Games Room

16'6" x 15'3" (5.05 x 4.65)

With access to the garden via feature large sliding patio doors.

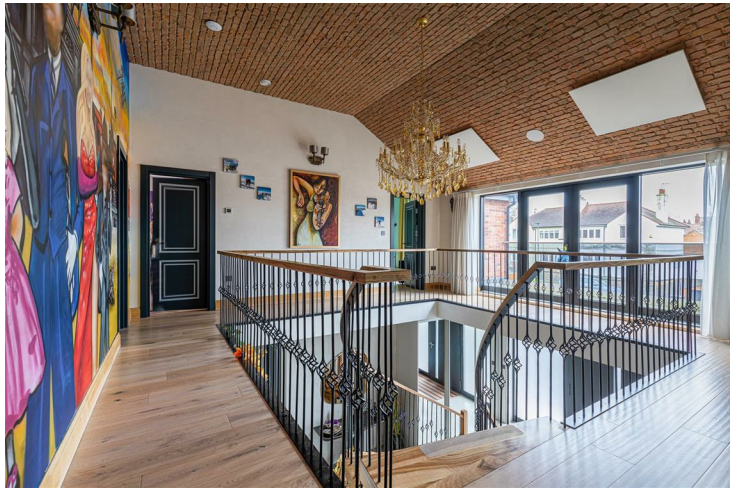


First Floor

Superb Fully Galleried Landing

18'9" x 17'10" (5.72 x 5.44)

Fully galleried landing with the continuation of engineered oak and wrought iron balustrade offering fabulous views down to the entrance hall, double glazed doors giving access to the feature balcony and doors to four bedrooms and main bathroom.



Feature Balcony

With glass balustrade.

Principal Bedroom

25'2" x 15'1" (7.68 x 4.62)

With a large wardrobe featuring sliding mirrored doors, feature triple glazed picture window to the rear, door to a walk-in wardrobe/dressing room and further door to the beautifully appointed en-suite shower room.



Beautifully Appointed En-Suite Shower Room

8'3" x 6'2" (2.54 x 1.90)

With a combination of floor and wall tiling, low flush WC, vanity unit with wash handbasin and mixer tap with storage beneath, large walk-in shower cubicle and triple glazed window to the rear.



Dressing Room/Wardrobe

8'5" x 6'7" (2.58 x 2.03)

Double Bedroom Two

21'8" x 15'3" (6.62 x 4.65)

Again, with a fitted wardrobe with sliding mirrored doors and feature triple glazed picture window to the rear.



Double Bedroom Three

19'9" x 15'3" (6.04 x 4.66)

Again, with a large fitted wardrobe and double glazed picture window to the front.



Double Bedroom Four

16'6" x 15'2" (5.05 x 4.64)

With fitted wardrobe and feature double glazed picture window to the front.



Main Bathroom

13'3" x 9'1" (4.06 x 2.79)

Beautifully appointed again, with a combination of floor and wall tiling, low flush WC, large sink unit with twin mixer taps, freestanding bath with mixer tap and shower attachment, large walk-in shower cubicle and triple glazed window to the rear.



Outside

Frontage & Driveway

The property occupies a sizeable plot on peaceful Chevin Road, accessed via remote gates with video intercom system and walled boundaries, an extensive driveway providing ample off road parking, a low maintenance children's play area to the front and an integral garage with remote door.



Rear Garden

To the rear of the property is a private west-facing rear garden featuring a large artificial lawn with a selection of trees and a block paved pathway/patio with a walled and hedge boundary and an outbuilding/home office with an attached gazebo, ideal for outdoor dining and entertaining along with an outdoor speaker system. There is also ornamental lighting around the property as well as CCTV and an external power supply.



Home Office/Beauty Room

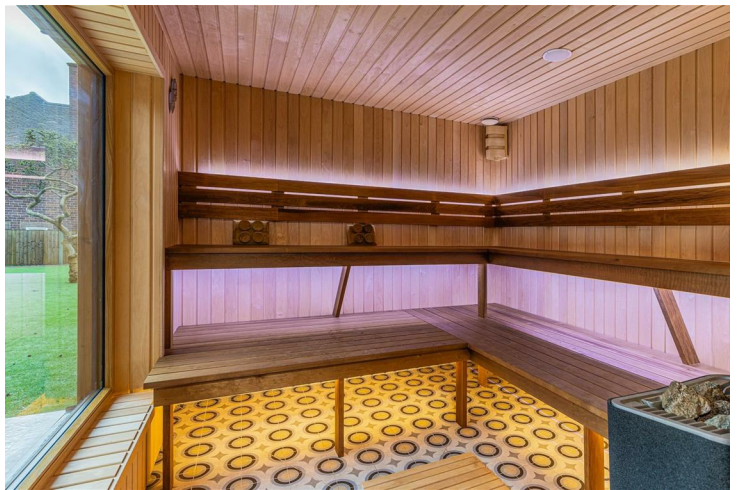
13'8" x 9'6" (4.19 x 2.91)

A large outbuilding features a home office/beauty room with a well appointed shower room and sauna.



Sauna

9'2" x 8'2" (2.80 x 2.51)



Shower Room

9'6" x 3'9" (2.91 x 1.16)



Integral Garage

17'4" x 15'4" (5.29 x 4.69)

Council Tax Band G- Derby



Floor 0 Building 1



Floor 1 Building 1



Floor 0 Building 2

Approximate total area
3906.79 ft²
362.95 m²

(1) Excluding balconies and terraces

While every attempt has been made to ensure accuracy, all measurements are approximate, not to scale. This floor plan is for illustrative purposes only.

GIRAFFE 360



Duffield Office

Duffield House
Town Street
Duffield
Derbyshire
DE56 4GD

01332 843390
duffield@fletcherandcompany.co.uk

Derby Office

15 Melbourne Court
Millennium Way
Pride Park
Derby
DE24 8LZ

01332 300558
derby@fletcherandcompany.co.uk

Sunglow 11 Chevin Road
Strutts Park
Derby
DE1 3EX

Council Tax Band: G
Tenure: Freehold



Energy Efficiency Rating

	Current	Potential
<i>Very energy efficient - lower running costs</i>		
(92 plus) A		
(81-91) B		
(69-80) C	74	80
(55-68) D		
(39-54) E		
(21-38) F		
(1-20) G		
<i>Not energy efficient - higher running costs</i>		
England & Wales	EU Directive 2002/91/EC	