



BRITISH
PROPERTY
AWARDS

2022
★ ★ ★ ★ ★

GOLD WINNER

ESTATE AGENT
IN ROSS-ON-WYE



7 Highfield Place, Coalway, Coleford, Gloucestershire,
GL16 7JX

£259,950

3 2 1 C

7 Highfield Place, Coalway, Coleford,
Gloucestershire, GL16 7JX

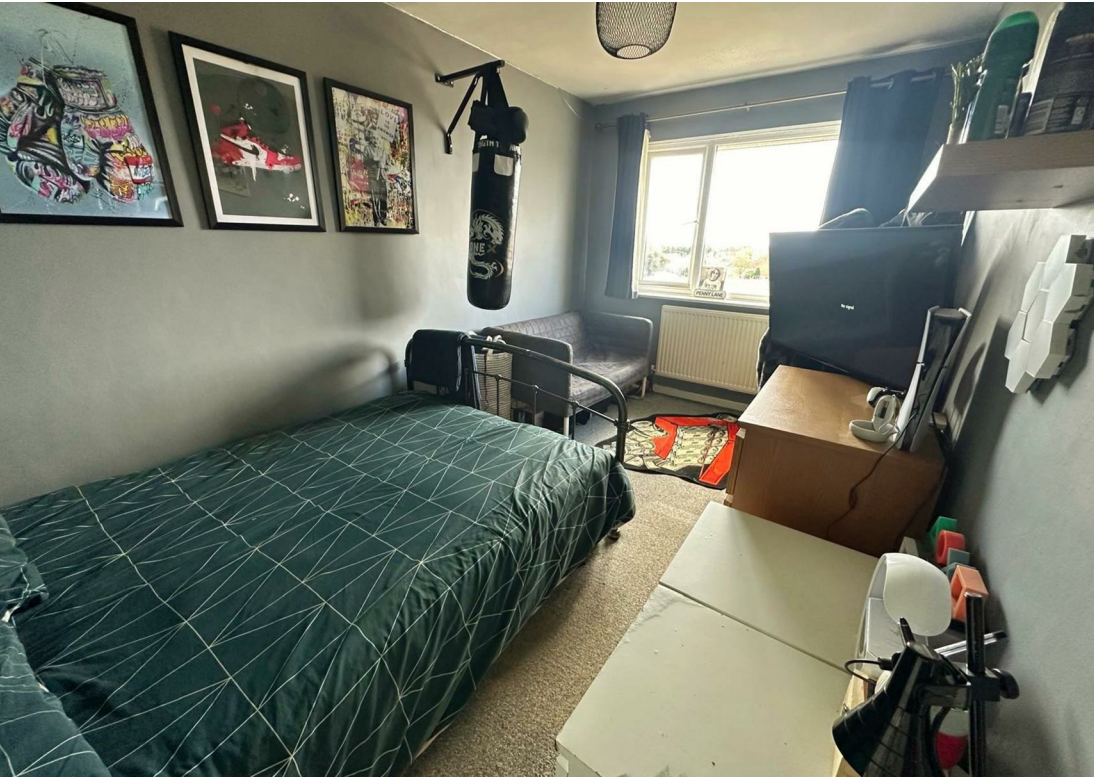
A spacious three bedroom Semi-Detached house,
which benefits from having gas central heating,
garage and front and rear gardens.

The accommodation comprises of a kitchen, living
room, downstairs family bathroom, whilst on the first
floor there are three bedrooms with the main having a
small ensuite and built in cupboard space.

The property benefits from being close to local shops
and a short distance to the woodlands.

Floorplan coming soon!





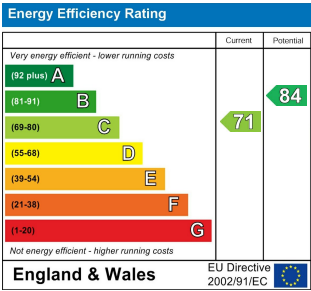
Floor Plan



Area Map



Energy Efficiency Graph



Viewing

Please contact our Trivett Hicks (Ross-On-Wye) Office on 01989 768666 if you wish to arrange a viewing appointment for this property or require further information.

These particulars, whilst believed to be accurate are set out as a general outline only for guidance and do not constitute any part of an offer or contract. Intending purchasers should not rely on them as statements of representation of fact, but must satisfy themselves by inspection or otherwise as to their accuracy. No person in this firms employment has the authority to make or give any representation or warranty in respect of the property.



**BRITISH
PROPERTY
AWARDS
2022**

GOLD WINNER

ESTATE AGENT
IN ROSS-ON-WYE



**RELAX,
YOU ARE IN
SAFE HANDS**

Hereford
T 01432 274300
E hereford@trivett-hicks.com
10 St. Peters Street
Hereford
HR1 2LE

Directors
Jason Hicks MNAEA
Jeremy Trivett

TrivettHicks Ltd Registered Office
SME House, Unit 1, Holme Lacy Industrial Estate, Herefordshire HR2 6DR. Registered No 4380917

Ross-on-Wye
T 01989 768666 **F** 01989 764185
E ross@trivett-hicks.com
53 Broad Street
Ross-on-Wye
HR9 7DY