

LAMBE CREEK HOUSE  
OLD KEA, NR TRURO

**JONATHAN**  

---

**CUNLIFFE**



*Lambe Creek House, Old Kea, Truro TR3 6AN*

For sale for the first time in 60 years, an extraordinary period house set in just under 6 acres in a romantic and tranquil waterfront setting on the Truro River at the upper reaches of the Fal Estuary.





- Elegant period residence in a captivating waterside position
- Separate cottage, pavilion and further outbuildings • Gardens, woodland and paddocks
- Sweeping river views towards the spires of Truro Cathedral • Listed grade II freehold
- Council Tax Band H • Main House 3202 sqft, Cottage 618 sqft, Outbuildings 2208 sqft
  - In all, just under 6 acres
- Rare opportunity to sensitively restore a historic home in one of Cornwall's most atmospheric settings













SETTING THE SCENE

Old Kea is a small hamlet in south Cornwall, set in unspoilt countryside near the city of Truro along the banks of the Truro River - a tributary of the River Fal.

Steeped in history, it is traditionally believed to be the landing site of Saint Kea, a 5th-century missionary who gave the area its name. Today, Old Kea retains a quiet, rural charm, with a handful of cottages and farmsteads nestled in lush countryside. The remnants of a earlier church still stand, notably the Norman tower, which is preserved alongside a small renovated chapel that continues to serve the local community. The area is popular with walkers and those interested in Cornwall's early Christian heritage.

Truro has good private and state schooling and a railway station on the London-Penzance mainline with overnight 'sleeper' service. To the south, the university town and port of Falmouth sits overlooking the entrance to one of the largest natural harbours in the world.

HISTORY - LEE MILLER

Probably built in the late 1700's, Lambe Creek was remodelled in the early 19th Century and was lived in by an Admiral Temple. In the 1930s and 1940s it was owned by the Penrose family. During this time it attracted many celebrities as its owner, Beakus Penrose, was then married to the sister of the actor Robert Newton and he and other film stars were often seen in the area. Beakus Penrose's brother was Roland Penrose, a famous art collector who introduced Surrealism to this country.

In the summer of 1937 a group of surrealist poets, writers and painters gathered at the house. The guest list makes remarkable reading: Leonora Carrington, Max Ernst, Man Ray, Ady Fidelin, Eileen Agar, Joseph Bard, Paul and Nusch Éluard. Visitors included Henry Moore and his wife; Édourd Mesens, Belgian surrealist poet and dealer; and Joseph Bard, writer. Roland had also invited the American photographer and model Lee Miller, who he had just met at a party in Paris, and who he had fallen in love with.

The infamous house party that followed, at Lambe Creek, became known as the 'Surrealists in Cornwall' and has inspired subsequent exhibitions and books.

THE TOUR

Lying on the tranquil, leafy banks of the Truro River, Lambe Creek House occupies an exceptional waterside position with sweeping river views and a long, drive winding across farmland of the Tregothnan Estate down to the sleepy creek and this enchanting period home.

It's white-painted stone façade, draped in wisteria and framed by sash windows, highlight it's elegant proportions and hint at the characterful interiors and features beyond.

Inside, a bright hallway with an open-well staircase rises to a galleried landing with barrel vault ceilings above. The main reception rooms radiate, leading on to the country kitchen, and a large games room. Upstairs, seven bedrooms, including a vast, light-filled principal suite, unfold across the first floor, accompanied by a good-sized study and family bathroom.

Steeped in character and with a rich and colourful history, Lambe Creek House is quite literally a once in a lifetime opportunity to own a period home with land in such a serene and atmospheric waterside setting, with the potential to sensitively restore it and make it truly your own.

STEP OUTSIDE

The idyllic grounds are abundant with magnificent mature trees and planting, with lawns, sun-drenched terraces, and pockets of woodland encircling the house. To the west, the property is bounded by one of the most beautiful stretches of river frontage, while to the east lies the historic Tregothnan Estate, creating an immensely private sanctuary where the only sounds are those of the surrounding wildlife.

A collection of old outbuildings are dotted throughout the grounds, including a former farmworker's cottage, a wonderful pavilion beside the upper lawn, stable yard and garaging/stores.

Pastureland to the north-east is divided into smaller paddocks and punctuated by majestic oaks and walnuts. From the grounds, there are wonderful views along the river to Malpas and the spires of Truro Cathedral. A beach and small jetty provides access to the water – and even the chance to row to The Heron pub across the river.

SERVICES

Private water supply (via borehole and well), mains electricity, private drainage and oil fired central heating.

Please be aware we cannot confirm that all these services comply with current regulations.

DISTANCES (all distances approximate)

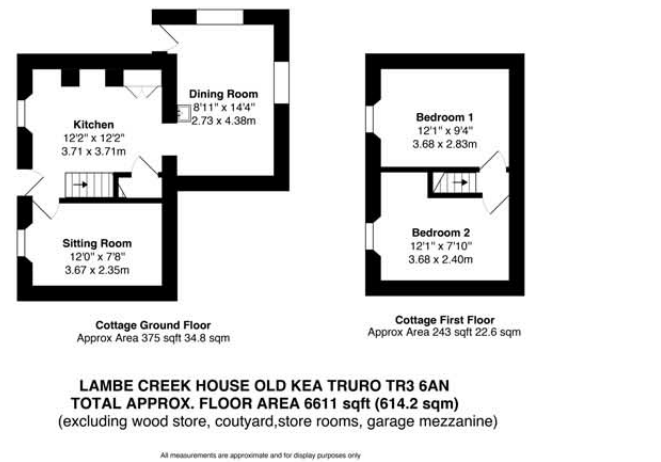
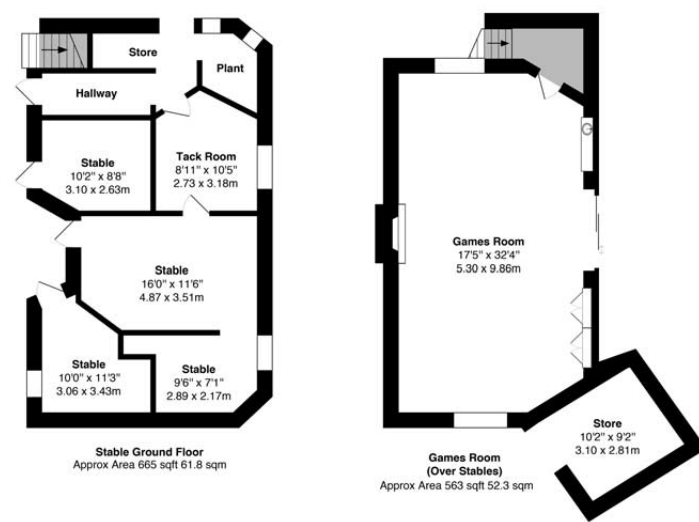
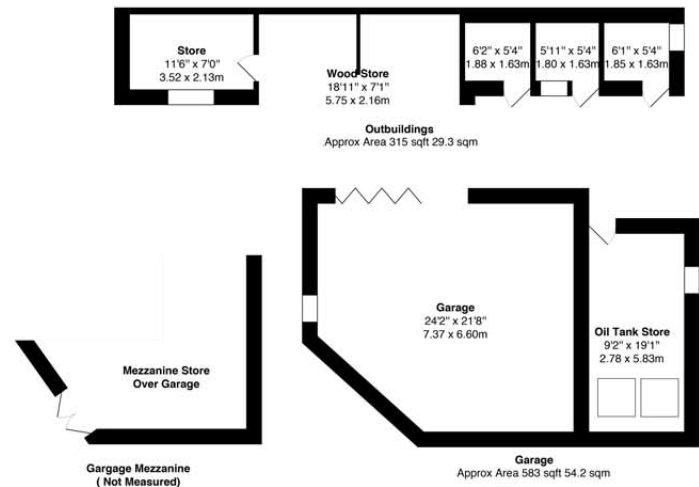
Truro (main line station) 4 miles, Falmouth 11 miles, Newquay Airport 39 miles.

WHAT3WORDS LOCATION

///unlimited.lease.diplomas

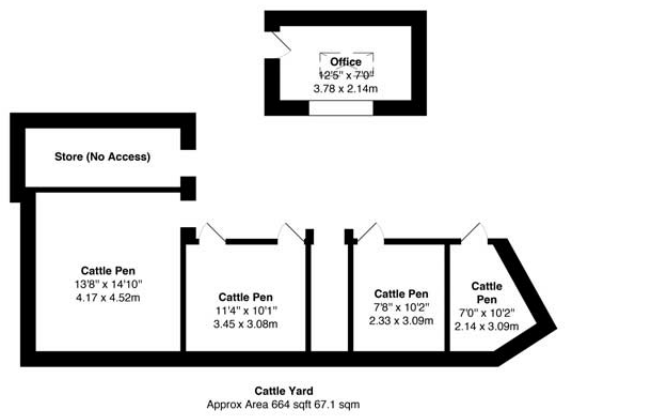
COUNCIL TAX BAND

H



**LAMBE CREEK HOUSE OLD KEA TRURO TR3 6AN**  
**TOTAL APPROX. FLOOR AREA 6611 sqft (614.2 sqm)**  
(excluding wood store, outyard, store rooms, garage mezzanine)

All measurements are approximate and for display purposes only



**ANTI-MONEY LAUNDERING REGULATIONS**  
It is a legal requirement that we receive verified identification from all buyers before a sale can be formally instructed. Your cooperation on this matter is much appreciated to ensure there is no unnecessary delay in concluding a sale. We will inform you of the process once your offer has been accepted.

**PROOF OF FUNDING**  
Prior to agreeing a sale, our clients may require us to obtain a proof of your financial ability to purchase. Again, we ask for your cooperation on this matter to avoid any unnecessary delays and will inform you of what we require prior to agreeing a sale.

**IMPORTANT NOTICE**  
Jonathan Cunliffe, their clients and any joint agents give notice that they are not authorised to make or give any representations or warranties in relation to the property either here or elsewhere, either on their own behalf or on behalf of clients or otherwise. They assume no responsibility for any statement that may be made in these particulars, which do not form any part of any offer or contract and must not be relied upon as statements or representations of fact. Any areas, measurements or distances are approximate. The text, images and plans are for guidance only and are not necessarily comprehensive. It should not be assumed that the property has all the necessary planning, building regulation or other consents and Jonathan Cunliffe have not tested any services, equipment or facilities. Purchasers must satisfy themselves by inspection or otherwise.

**JONATHAN**  

---

**CUNLIFFE**

[jonathancunliffe.co.uk](http://jonathancunliffe.co.uk)