



GILSON GRAY

LAW • PROPERTY • FINANCE

24 TRANTER ROAD, ABERLADY

Longniddry, East Lothian, EH32 0UE



Quietly located in the coastal village of Aberlady, much loved for its scenic seafront, this modern detached house promises a substantial four-bedroom family home with multiple living areas including a dining kitchen and utility room, a principal en-suite shower room, a four-piece bathroom, and a WC. The desirable residence benefits from tastefully understated interiors, garage parking, and attractively landscaped gardens with a south-facing aspect to the rear. Extras: All fitted floor coverings and window coverings are included in the sale



FEATURES

- Desirable coastal village
- Executive detached family home
- Porch and reception hall with storage and WC
- Generous living room with garden access
- South-facing conservatory
- Social dining kitchen with utility room
- Three double bedrooms with storage
- One single bedroom/home office with storage
- Principal en-suite shower room
- Bathroom with bath and separate shower
- Attractive gardens, enclosed and south-facing to the rear
- Private driveway
- Integral double garage
- Gas central heating and double glazing







"AN IMPRESSIVE FOUR-BEDROOM FAMILY HOME WITH A PEACEFUL SETTING CLOSE TO EAST LOTHIAN'S BREATHTAKING COASTLINE."





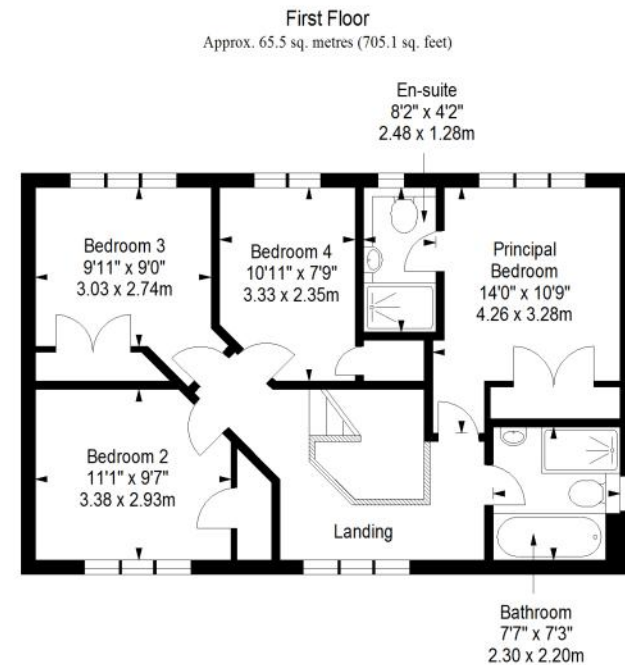
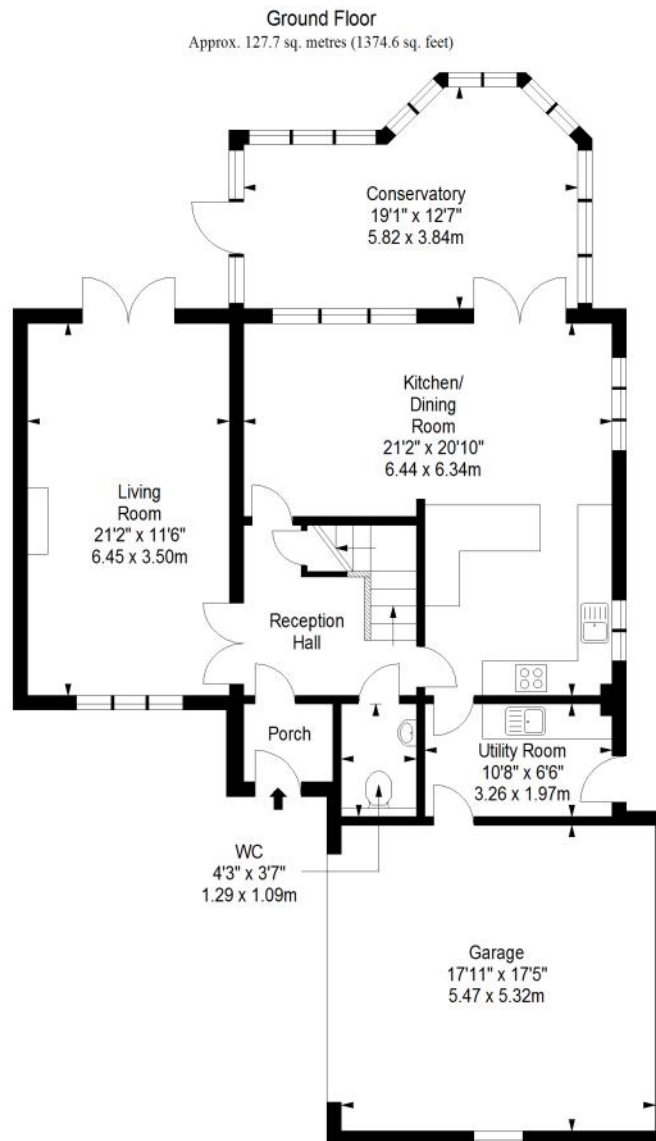
EPC RATING:

C

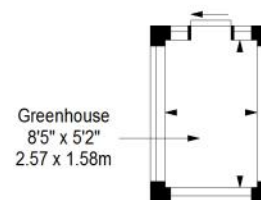
COUNCIL TAX BAND:

G

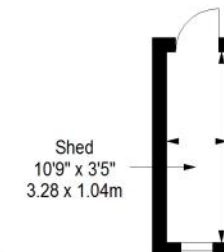
VIEWINGS: by appointment with Gilson Gray on 01620 893 481



Greenhouse
Approx. 4.1 sq. metres (44.1 sq. feet)



Shed
Approx. 3.5 sq. metres (37.7 sq. feet)



Total area: approx. 200.8 sq. metres (2161.5 sq. feet)



GILSONGRAY.CO.UK

EDINBURGH

29 Rutland Square
EH1 2BW
0131 516 5366



GLASGOW

160 West George Street
G2 2HQ
0141 530 2021



EAST LOTHIAN

33 Westgate
EH39 4AG
01620 893 481



DUNDEE

2 West Marketgait
DD1 1QN
01382 201 000



BORDERS

01890 880 008



@gilsongrayprop



gilson gray property



gilson gray property



@gilsongrayprop



These particulars were prepared on the basis of our own knowledge of the local area and, in respect of the property itself, information supplied to us by our clients; all reasonable steps were taken at the time of preparing these particulars to ensure that all details contained in them were accurate. All statements contained in the particulars are for information only and all parties should not rely upon them as statements or representations of fact. In particular, (a) descriptions, measurements and dimensions, which may be quoted in these particulars are approximate only and (b) all references to conditions, planning permission, services, usage, constructions, fixtures and fittings and movable items contained in the property are for guidance only. Our clients may instruct us to set a closing date for offers at short notice and therefore if you wish to pursue interest in this property, you should immediately instruct your solicitor to note interest with us. Our clients reserve the right to conclude a bargain for the sale of the above subjects or any part thereof ahead of a notified closing date and will not be obliged to accept either the highest or indeed any offer for the above subjects or any part thereof. All measurements have been taken using a sonic tape and cannot be regarded as guaranteed given the limitations of the device. Services and/or appliances referred to in these particulars have not been tested and no warranty is given that they are in full working order.