



GILSON GRAY

LAW • PROPERTY • FINANCE

24 GLASSEL PARK ROAD

Longniddry, East Lothian, EH32 0NY



This detached chalet-style house is well-presented inside and out, with versatile modern interiors, including four double bedrooms, a bathroom, a shower room, openly adjoining living areas, and an easy-to-maintain enclosed garden that benefits from sun throughout the day. The perfect family home also offers plentiful private parking with a multi-car driveway and detached single garage.

Extras: All fitted floor and window coverings and light fittings are included in the sale.



FEATURES

- Desirable coastal village setting
- Versatile modern interiors
- Detached chalet-style house
- Entrance hall with storage and shower room/WC
- Spacious living room open to:
- Formal dining room open to:
- Stylish south-facing kitchen
- Four good-sized double bedrooms (three with storage)
- Chic bathroom with shower-over-bath
- Corner plot with gardens to the front, side and rear
- Private multi-car driveway and detached single garage
- Additional on-street parking
- Gas central heating and double-glazing







"THE PERFECT FAMILY HOME
BOASTS FOUR DOUBLE
BEDROOMS, MULTIPLE
WASHROOMS, AND AN
OPEN ARRANGEMENT OF
LIVING AREAS."





EPC RATING:



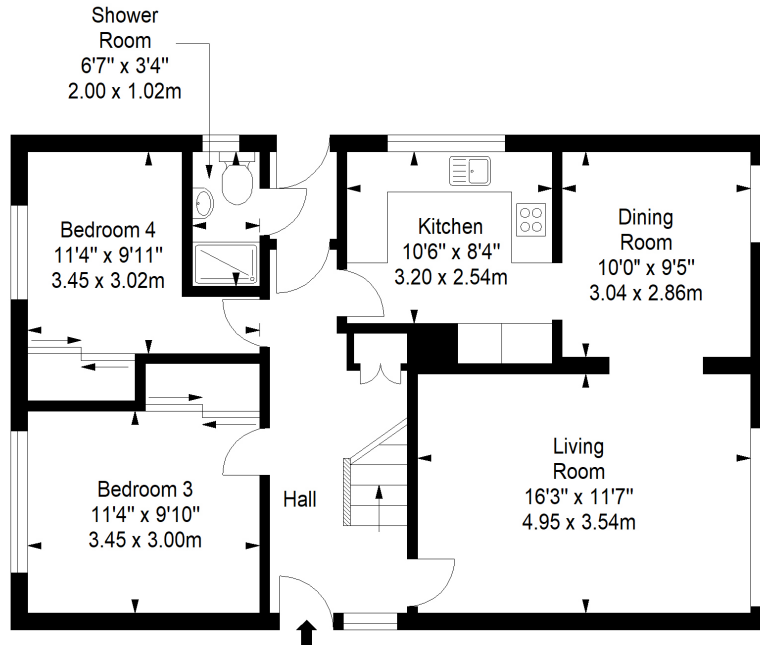
COUNCIL TAX BAND:



VIEWINGS: by appointment with Gilson Gray on 01620 893 481

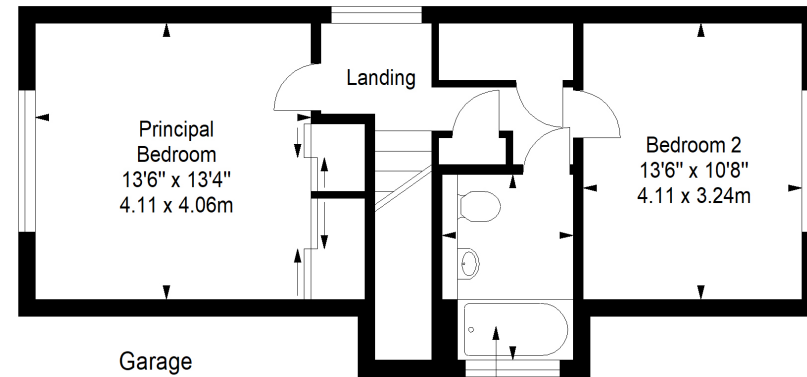
Ground Floor

Approx. 73.6 sq. metres (792.2 sq. feet)



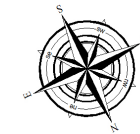
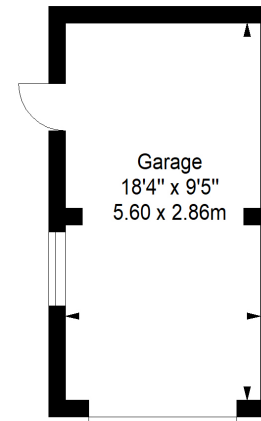
First Floor

Approx. 49.4 sq. metres (531.8 sq. feet)



Garage

Approx. 16.2 sq. metres (174.4 sq. feet)



Total area: approx. 139.2 sq. metres (1498.4 sq. feet)



GILSONGRAY.CO.UK

EDINBURGH

29 Rutland Square
EH1 2BW
0131 516 5366



GLASGOW

160 West George Street
G2 2HQ
0141 530 2021



EAST LOTHIAN

33 Westgate
EH39 4AG
01620 893 481



DUNDEE

2 West Marketgait
DD1 1QN
01382 201 000



BORDERS

01890 880 008



@gilsongrayprop gilson gray property gilson gray property @gilsongrayprop

These particulars were prepared on the basis of our own knowledge of the local area and, in respect of the property itself, information supplied to us by our clients; all reasonable steps were taken at the time of preparing these particulars to ensure that all details contained in them were accurate. All statements contained in the particulars are for information only and all parties should not rely upon them as statements or representations of fact. In particular, (a) descriptions, measurements and dimensions, which may be quoted in these particulars are approximate only and (b) all references to conditions, planning permission, services, usage, constructions, fixtures and fittings and movable items contained in the property are for guidance only. Our clients may instruct us to set a closing date for offers at short notice and therefore if you wish to pursue interest in this property, you should immediately instruct your solicitor to note interest with us. Our clients reserve the right to conclude a bargain for the sale of the above subjects or any part thereof ahead of a notified closing date and will not be obliged to accept either the highest or indeed any offer for the above subjects or any part thereof. All measurements have been taken using a sonic tape and cannot be regarded as guaranteed given the limitations of the device. Services and/or appliances referred to in these particulars have not been tested and no warranty is given that they are in full working order.