



GILSON GRAY

LAW • PROPERTY • FINANCE

18 GREEN APRON PARK

North Berwick, East Lothian, EH39 4RE



Situated in the desirable coastal town of North Berwick, this detached two-bedroom bungalow benefits from a private driveway, an integral garage, and neatly kept gardens with a south-facing rear aspect. The light and airy interiors enjoy an understated decorative finish and feature a sunny and spacious reception room, a stylish kitchen, a modern shower room with a walk-in shower, and good built-in storage. The beach, train station, and central amenities are all accessible by foot from the property, which will appeal to professionals, young families, and downsizers. Primary and secondary schools are also just a 10-minute walk away and the property has a quiet setting on a peaceful cul-de-sac.

Extras: All fitted floor and window coverings and light fittings are included.

FEATURES

- Quiet seaside town address
- Light and airy detached bungalow
- Vestibule and bright entrance hall with storage and rear access
- Dual-aspect living/dining room
- Tasteful contemporary kitchen
- One double bedroom with storage
- One spacious single bedroom with storage
- Modern shower room
- Attractive gardens, enclosed and south-facing to the rear
- Neatly paved private driveway
- Integral single garage
- Gas central heating and double glazing







"A QUIET SEASIDE TOWN
LOCATION WITHIN EASY
REACH OF REGULAR RAIL
LINKS CONNECTING TO
EDINBURGH IN JUST HALF AN
HOUR."





EPC RATING:



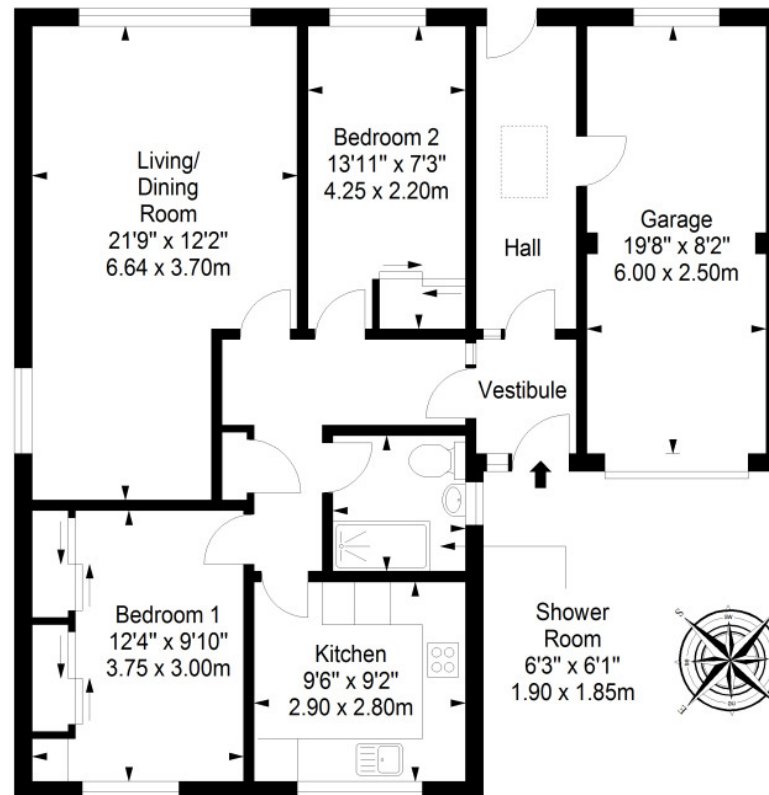
COUNCIL TAX BAND:



VIEWINGS: by appointment with Gilson Gray on 01620 893 481

Ground Floor

Approx. 89.3 sq. metres (961.2 sq. feet)



Total area: approx. 89.3 sq. metres (961.2 sq. feet)



GILSONGRAY.CO.UK

EDINBURGH

29 Rutland Square
EH1 2BW
0131 516 5366



GLASGOW

160 West George Street
G2 2HQ
0141 530 2021



EAST LOTHIAN

33 Westgate
EH39 4AG
01620 893 481



DUNDEE

2 West Marketgait
DD1 1QN
01382 201 000



BORDERS

01890 880 008



@gilsongrayprop gilson gray property gilson gray property @gilsongrayprop

rightmove Zoopla.co.uk OnTheMarket

These particulars were prepared on the basis of our own knowledge of the local area and, in respect of the property itself, information supplied to us by our clients; all reasonable steps were taken at the time of preparing these particulars to ensure that all details contained in them were accurate. All statements contained in the particulars are for information only and all parties should not rely upon them as statements or representations of fact. In particular, (a) descriptions, measurements and dimensions, which may be quoted in these particulars are approximate only and (b) all references to conditions, planning permission, services, usage, constructions, fixtures and fittings and movable items contained in the property are for guidance only. Our clients may instruct us to set a closing date for offers at short notice and therefore if you wish to pursue interest in this property, you should immediately instruct your solicitor to note interest with us. Our clients reserve the right to conclude a bargain for the sale of the above subjects or any part thereof ahead of a notified closing date and will not be obliged to accept either the highest or indeed any offer for the above subjects or any part thereof. All measurements have been taken using a sonic tape and cannot be regarded as guaranteed given the limitations of the device. Services and/or appliances referred to in these particulars have not been tested and no warranty is given that they are in full working order.