



60, Christchurch Street, London

Guide Price £2,495,000

60, Christchurch Street

London, London

A very special three-bedroom freehold house, presented in excellent decorative order throughout, with stunning roof terrace, situated on one of the finest streets in Chelsea.

Council Tax band: G

Tenure: Freehold

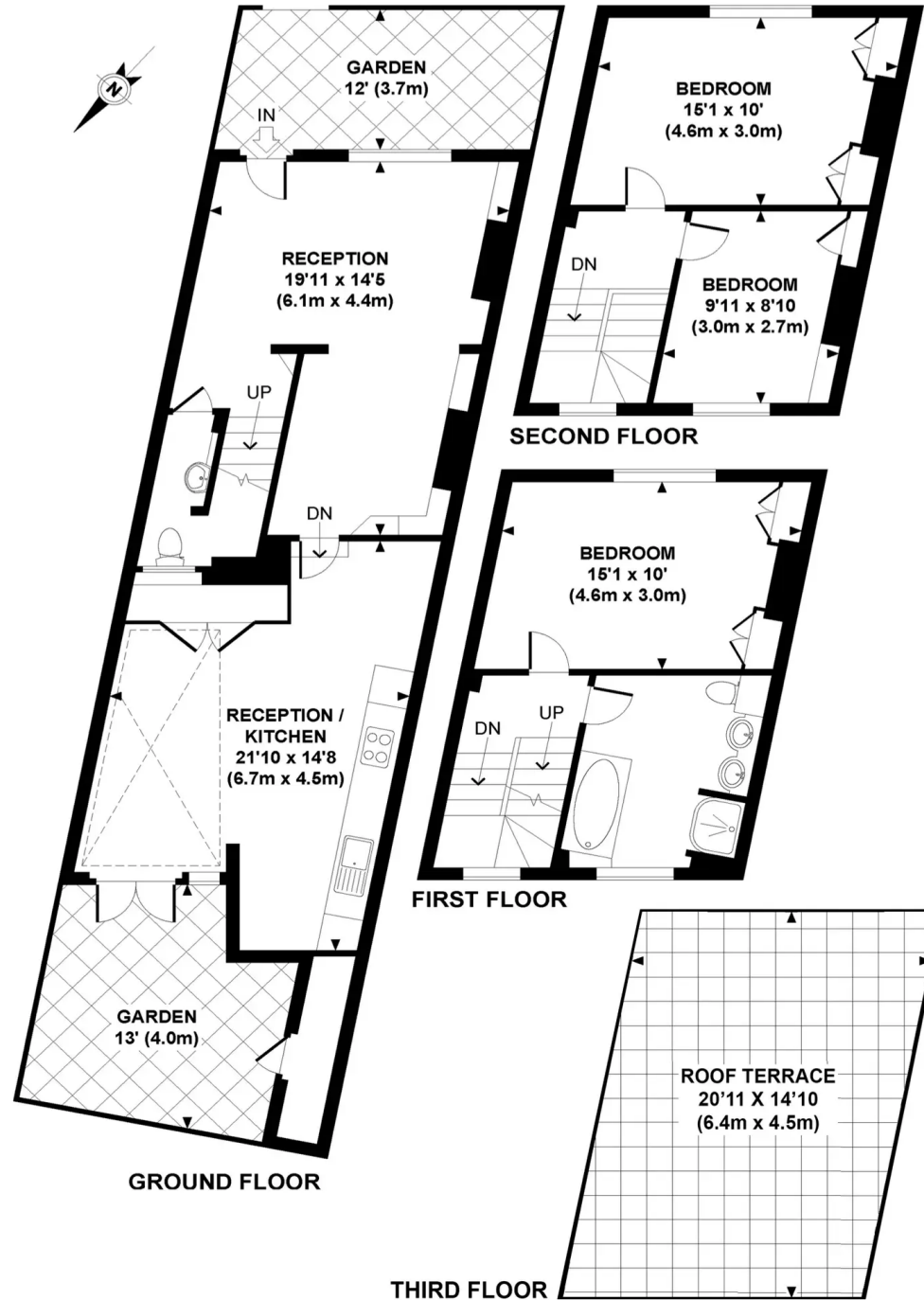
EPC Energy Efficiency Rating: D

EPC Environmental Impact Rating:

- Grade II listed freehold house
- Peaceful residential street in the heart of Chelsea
- Large roof terrace
- Beautiful townhouse, full of character
- Guest WC
- Moments to the Kings Road
- Front and rear garden



Christchurch Street, SW3



APPROXIMATE GROSS INTERNAL AREA 1240 SQ FT / 115.3 SQ M

Whilst every attempt has been made to ensure the accuracy of this floor plan; measurements of door, windows, rooms and all other items are approximate. No responsibility is taken for any error, omission or mis-statement. This floor plan is for illustrative purposes only, and should be treated as such.



Agent & Homes

136B Lancaster Road, London - W11 1QU

02035980808

tim@agentandhomes.com

www.agentandhomes.com/

agent
& homes