

64

Pentire Green, Crantock

david ball  
| LUXURY COLLECTION |





This stunning, contemporary detached 4 bedroom home at Pentire Green in Crantock includes large open plan living & kitchen space and four generous double bedrooms, useful separate study, utility room and garage, creating the ideal choice both for families and those who simply love to entertain. Entertain in the open plan kitchen & dining space or enjoy movie night with the family in the separate reception room.

**£675,000 Freehold**

## Key Features

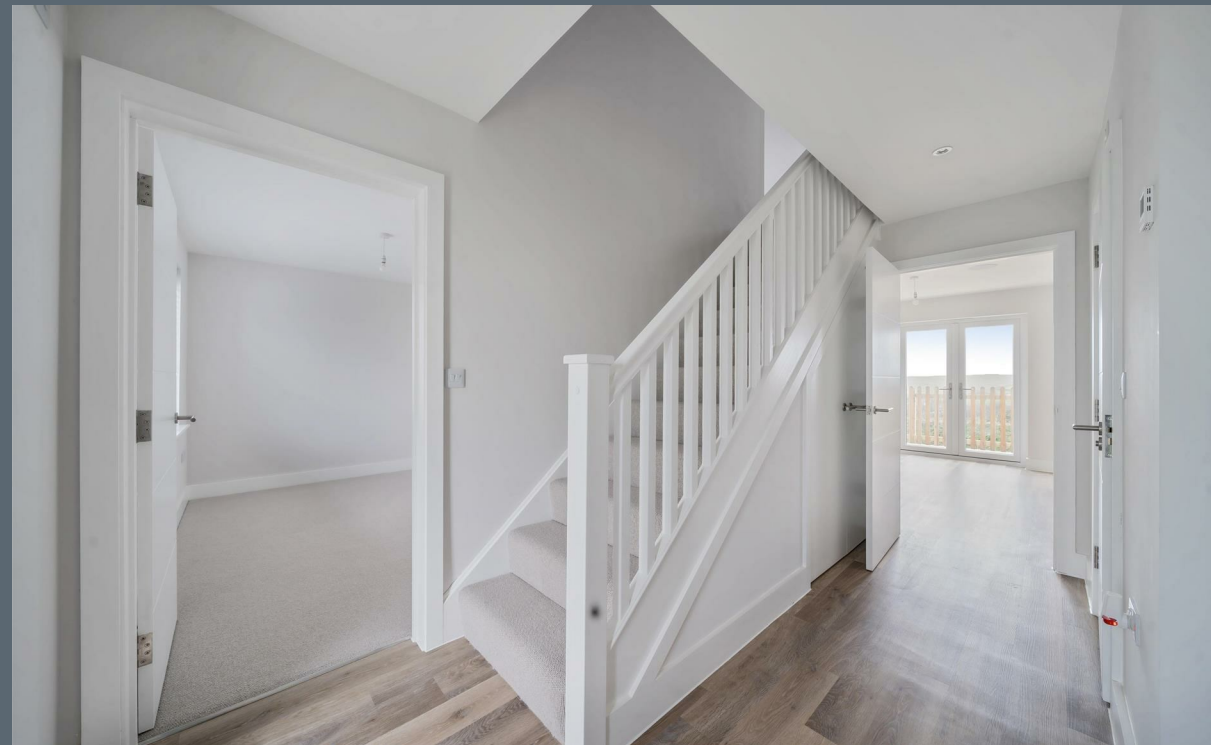
- Brand New Coastal Detached 4 Bedroom Home
- Landscaped South/Westerly Rear Gardens
- Far Reaching Countryside Views
- Garage & Parking for 2 Cars
- Energy Efficient Home & Renewable Heating
- EV Car Charging Ready & Solar Panels
- 10 Year NHBC Build Warranty
- Designed & Built By Award Winning Premium House Builder
- Ready for Occupation



## The Property

Pentire Green in Crantock offers this contemporary, detached four bedroom home with a breath-taking open-plan living area which expands across the rear of the property providing space for all to enjoy. Four double bedrooms, a separate study, utility room, and garage complete this stunning example of a family home. Ideal for families and those who love entertaining, the property boasts meticulous attention to detail in its design and energy efficiency. Legacy Homes, the award-winning builder, has crafted these homes with fully-integrated modern kitchens, stylish bathroom suites, and a commitment to providing a perfect home. Situated on the edge of the sought-after village of Crantock, Pentire Green provides stunning countryside views, proximity to Crantock beach, coastal walks, and a vibrant village community.

Inspired by coast and countryside, Legacy Homes ensures each property at Pentire Green features design-led architecture, contemporary living spaces, and energy-efficient solutions. The homes are equipped with air source heat pumps for sustainable heating, underfloor heating on the ground floor, and integrated photovoltaic roof panels for renewable energy. Additionally, these properties are pre-wired for electric vehicle charging points, reflecting Legacy Homes' commitment to both environmental sustainability and modern living.





## Externally

The external features of this property offer a welcoming and practical layout, including a driveway with ample parking space for at least two cars, ensuring convenience for residents and guests. The landscaped front garden showcases a variety of carefully selected flowers and shrubbery, adding aesthetic charm to the property. A single garage not only provides secure parking but also offers convenient access to the garden. Beyond the property, residents can enjoy the tranquil beauty of the garden with views extending over national trust land, the picturesque Cubert Common, providing a serene and scenic backdrop to enhance the overall appeal of this delightful home.







## The Location

Crantock, strategically located for easy commutes to major business hubs in Cornwall and renowned North coast beaches such as Crantock, Holywell Bay, and Perranporth, is an idyllic coastal village characterized by its charm, thriving community, traditional Cornish pub, independent cafés, shops, and a delightful village green. The vibrant village hall hosts activities that bring residents together, fostering community connections. With Crantock beach and the Gannel Estuary just a short walk away, residents can enjoy activities like swimming, surfing, or paddle boarding. Family days on the beach are enriched by joining the Crantock Surf Life Saving Club, ensuring safety on the water and creating memorable experiences for children growing up in North Cornwall.

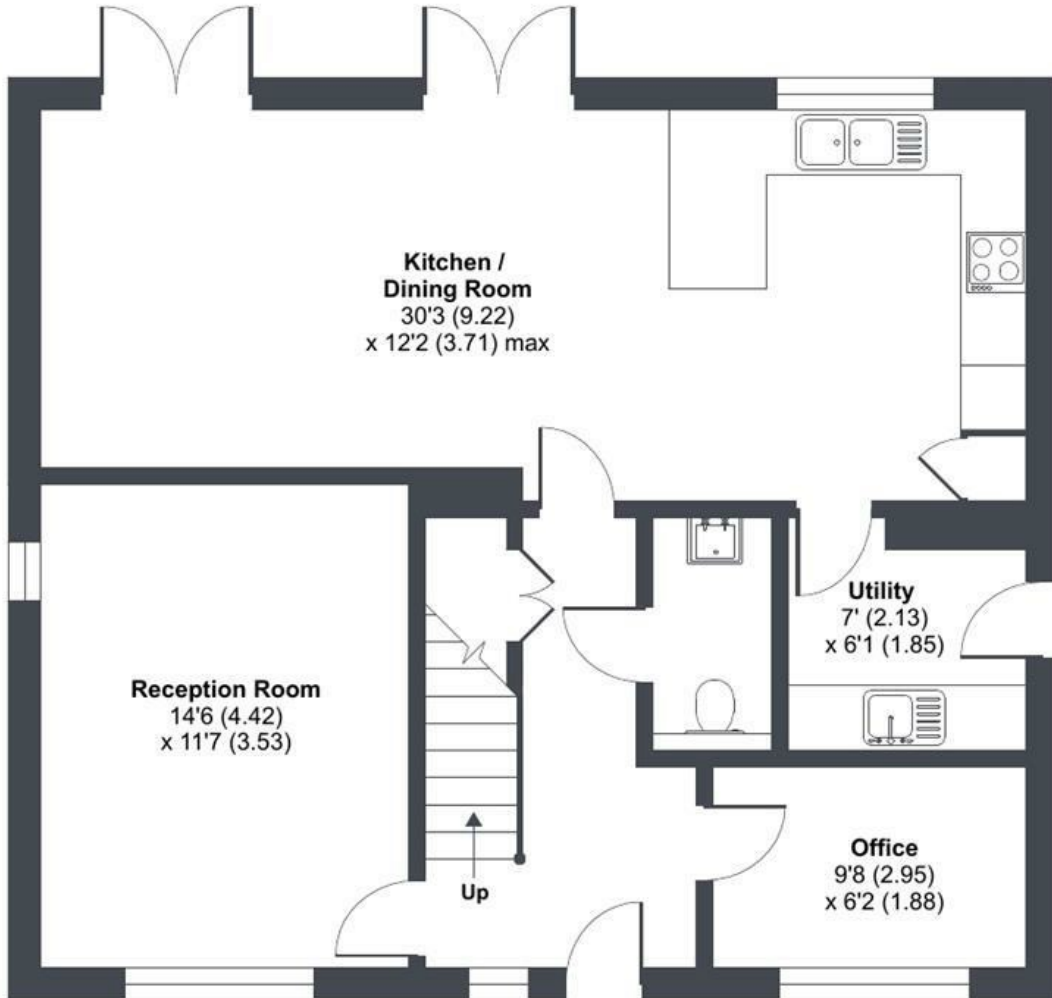


At low tide, a stroll to Crantock Beach and across the footbridge leads to the hidden gem, Fern Pit Café, offering fresh crab or lobster for dinner. Exploring beyond the village, a walk along the southern edge of Crantock beach to West Pentire provides a spectacular sunset view from the terrace at the C-Bay Bar & Bistro. Alternatively, a village stroll leads to Penpol Creek, featuring a diverse array of nesting birds, flora, and fauna. The doorstep of Crantock opens to the captivating North coast of Cornwall, inviting exploration of the great Atlantic Sea and the treasures that make this coastline truly worth living.

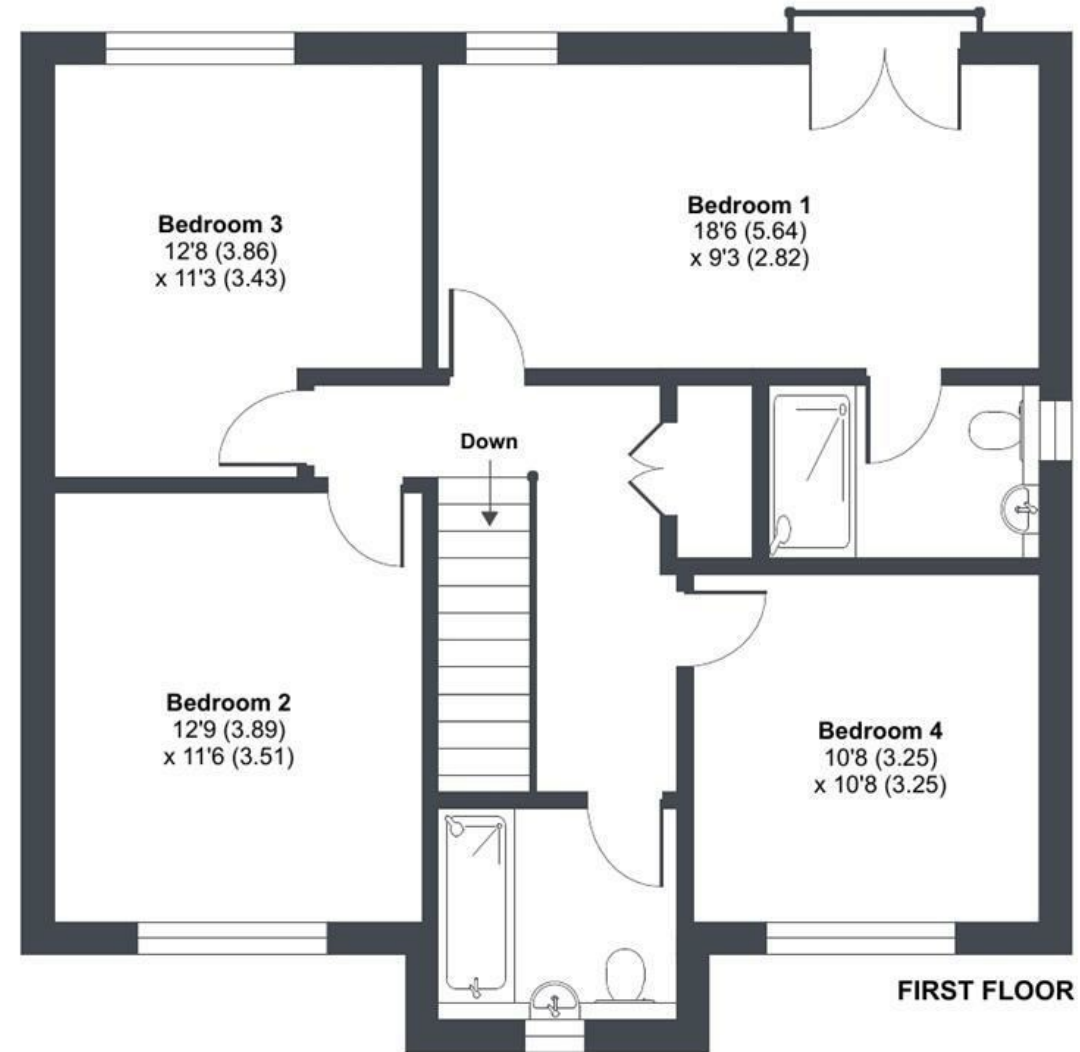
# Pentire Green, Crantock, Newquay, TR8

Approximate Area = 1618 sq ft / 150.3 sq m

For identification only - Not to scale



**GROUND FLOOR**



**FIRST FLOOR**











david ball  
| LUXURY COLLECTION |

01637 850850  
www.davidball-luxury.co.uk



e.sales@dba.estate  
34 East Street, Newquay, Cornwall TR7 1BH

1. Particulars: these particulars are not an offer or contract nor part of one. You should not rely on statements by David Ball Agencies (DBA) in the particulars or by word of mouth or in writing as being factually accurate about the property, its condition or value. Neither DBA nor any joint agent has any authority to make any representation about the property or development and accordingly any information given is entirely without responsibility in the part of the agents, sellers or lessors. 2. Images paragraphs and other information; any computer generated images, plans, drawings, accommodation schedules, specifications details or other information provided about the property ("information") are indicative only. Any such information may change at any time and must not be relied upon as being factually accurate about the property. Any photographs are indicative of the quality and style of the development and location and do not represent the actual fitting and furnishing at this development. 3. Regulations; any reference to alterations to the property or use of any part of the development is not a statement that any necessary planning, building regulations or other consents has been obtained. These matter must be verified by an intending purchaser. 4. Fixtures and fittings; supplied services and appliances have not been tested by the vendors agent. Prospective purchasers are advised to make their own enquiries. 5. All dimensions are approximates.