


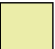














[keepmoat.com](https://www.keepmoat.com)


## Lyndon Park

Harwood Lane, Great Harwood, Blackburn, BB6 7TB

-  **The Malvern**  
2 bedroom home
-  **The Levan**  
2 bedroom home
-  **The Allerton**  
3 bedroom home
-  **The Berkley**  
3 bedroom home
-  **The Staveley**  
3 bedroom home
-  **The Rathmell**  
3 bedroom home
-  **The Hebden**  
3 bedroom home
-  **The Clayton**  
3 bedroom home
-  **The Clifton**  
4 bedroom home
-  **The Devonshire**  
4 bedroom home
-  **The Rowingham**  
4 bedroom home
-  **The Cambridge**  
4 bedroom home
-  **The Overton**  
4 bedroom home
-  **Heylo Housing Ltd**



 **Sales Information Centre**  
Plot 6

 **Show Homes**  
Plots 4 & 5

*Please Note: This site plan is only a guide to the above development. It does not bind or imply that the layout will be as indicated. Please see our Home Sales Executive for full specification and plot details at this development. T2 3875-02 Lyndon Park. Revision Date: 29.10.18 Rev No: 06*



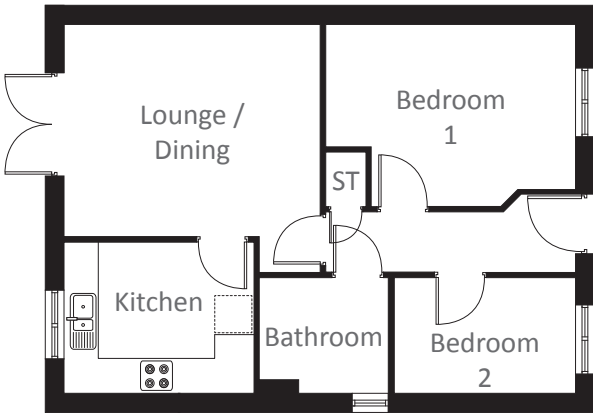
Artist's impression



[keepmoat.com](https://www.keepmoat.com)

The Malvern - 2 bedroom home

# The Malvern - 2 bedroom home



## Ground floor

Kitchen	3300 x 2645	10'10" x 8'8"	
Lounge / Dining	4455 x 4298	14'7" x 14'1"	†
Bedroom 1	4348 x 3155	14'3" x 10'4"	†
Bedroom 2	3157 x 2012	10'4" x 6'7"	
Bathroom	2254 x 2012	7'5" x 6'7"	†



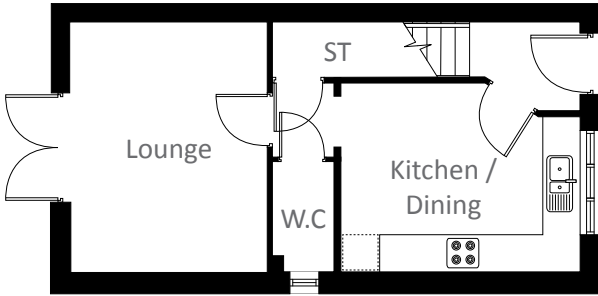
Artist's impression



[keepmoat.com](https://www.keepmoat.com)

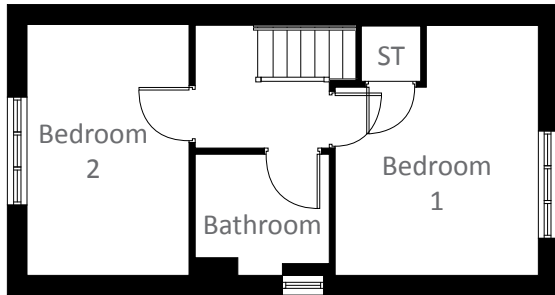
The Levan - 2 bedroom home

# The Levan - 2 bedroom home



## Ground floor

Kitchen / Dining	3902 x 3056	12'10" x 10'0"	†
Lounge	3200 x 4041	10'6" x 13'3"	
W.C	1046 x 1775	3'5" x 5'10"	



## First floor

Bedroom 1	3302 x 4041	10'10" x 13'3"	†
Bedroom 2	2650 x 4041	8'8" x 13'3"	
Bathroom	2196 x 1971	7'2" x 6'6"	†



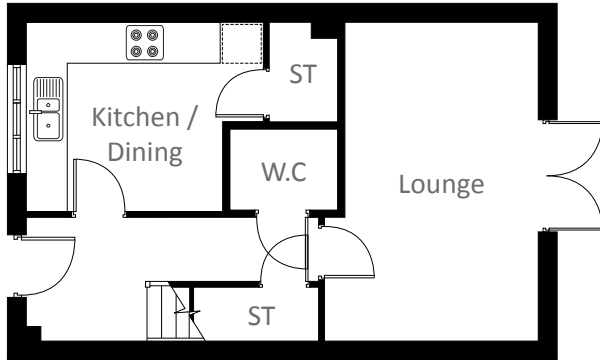
Artist's impression



[keepmoat.com](https://www.keepmoat.com)

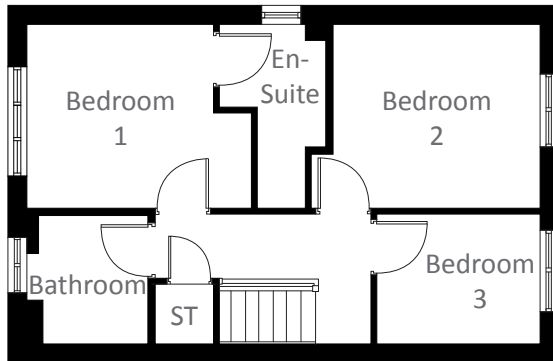
The Allerton - 3 bedroom home

# The Allerton - 3 bedroom home



## Ground floor

Kitchen / Dining	3889 x 3086	12'9" x 10'2"	†
Lounge	3170 x 5223	10'5" x 17'2"	
W.C	1800 x 1425	5'11" x 4'8"	



## First floor

Bedroom 1	3047 x 2951	10'0" x 9'8"	
En-Suite	1738 x 2951	5'8" x 9'8"	†
Bedroom 2	3360 x 2951	11'0" x 9'8"	
Bedroom 3	2646 x 2129	8'8" x 7'0"	
Bathroom	1958 x 2111	6'5" x 6'11"	





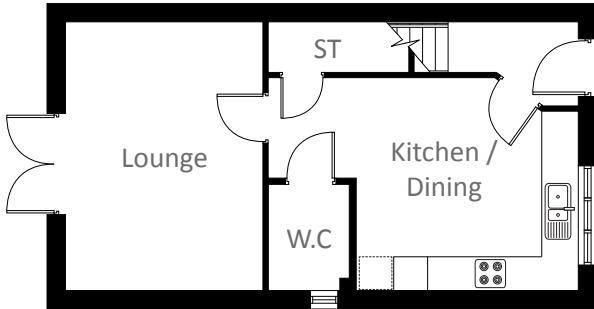
Artist's impression



[keepmoat.com](https://www.keepmoat.com)

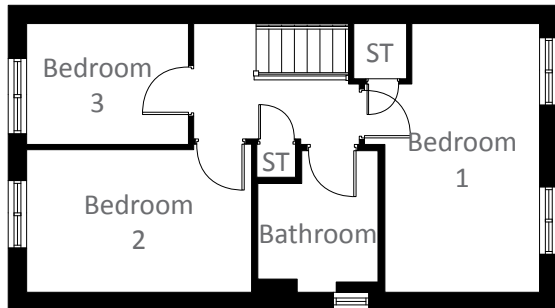
The Berkley - 3 bedroom home

# The Berkley - 3 bedroom home



## Ground floor

Kitchen / Dining	3950 x 3771	13'0" x 12'5"
Lounge	3512 x 4779	11'6" x 15'8"
W.C	1425 x 1888	4'8" x 6'2"



## First floor

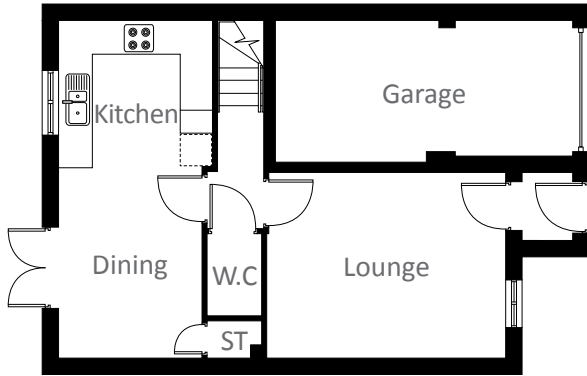
Bedroom 1	2750 x 4779	9'0" x 15'8"
Bedroom 2	4000 x 2536	13'1" x 8'4"
Bedroom 3	2878 x 2150	9'5" x 7'1"
Bathroom	2152 x 2518	7'1" x 8'3" †



[keepmoat.com](https://www.keepmoat.com)

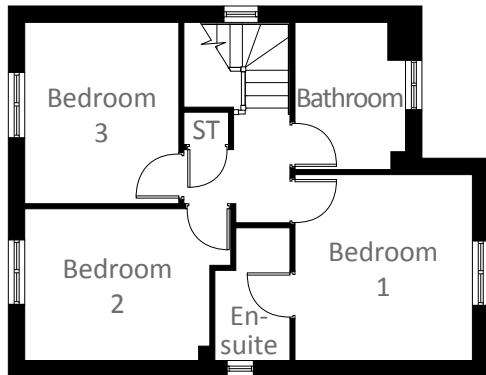
The Staveley - 3 bedroom home

# The Staveley - 3 bedroom home



## Ground floor

Kitchen / Dining	2822 x 6196	9'3" x 20'4"	†
Lounge	4397 x 3384	14'5" x 11'1"	†
W.C	1010 x 1520	3'4" x 5'0"	



## First floor

Bedroom 1	3253 x 3384	10'8" x 11'1"	
En-Suite	1375 x 2427	4'6" x 8'0"	†
Bedroom 2	3407 x 2775	11'2" x 9'1"	
Bedroom 3	2822 x 3328	9'3" x 10'11"	
Bathroom	2016 x 2719	6'7" x 8'11"	†



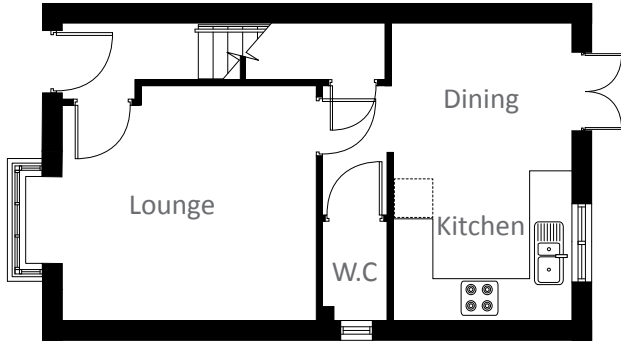
Artist's impression



[keepmoat.com](https://www.keepmoat.com)

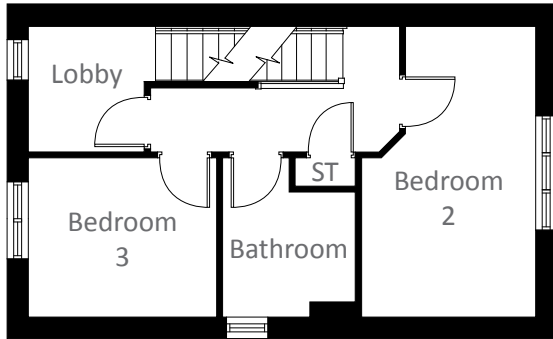
The Rathmell - 3 bedroom home

# The Rathmell - 3 bedroom home



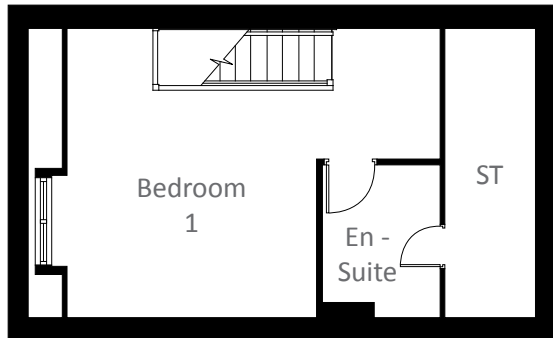
## Ground floor

Kitchen / Dining	2735 x 4491	9'0" x 14'9"	
Lounge	4516 x 3551	14'10" x 11'8"	†
W.C	960 x 1510	3'2" x 4'11"	



## First floor

Bedroom 2	2669 x 4491	8'9" x 14'9"	†
Bedroom 3	2883 x 2465	9'6" x 8'1"	
Lobby	1777 x 1933	5'10" x 6'4"	†
Bathroom	2034 x 2465	6'8" x 8'1"	†



## Second floor

Bedroom 1	5735 x 4491	18'10" x 14'9"	†
En-Suite	1660 x 2369	5'5" x 7'9"	†



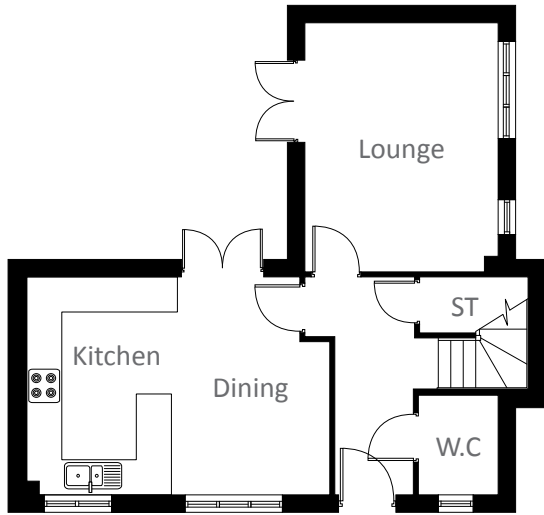
Artist's impression



[keepmoat.com](https://www.keepmoat.com)

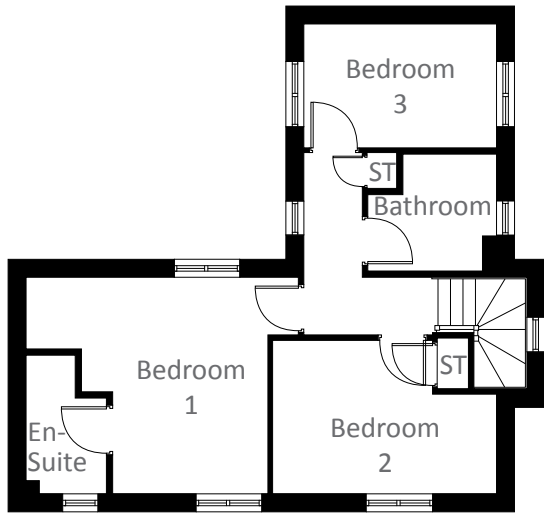
The Hebden - 3 bedroom home

# The Hebden - 3 bedroom home



## Ground floor

Kitchen / Dining	5505 x 3947	18'1" x 12'11"	†
Lounge	3497 x 4510	11'6" x 14'10"	
W.C	1451 x 1820	4'9" x 6'0"	



## First floor

Bedroom 1	4492 x 3947	14'9" x 12'11"	
En-Suite	1490 x 2557	4'11" x 8'5"	†
Bedroom 2	4064 x 2803	13'4" x 9'2"	†
Bedroom 3	3497 x 2252	11'6" x 7'5"	
Bathroom	2351 x 2174	7'9" x 7'2"	†





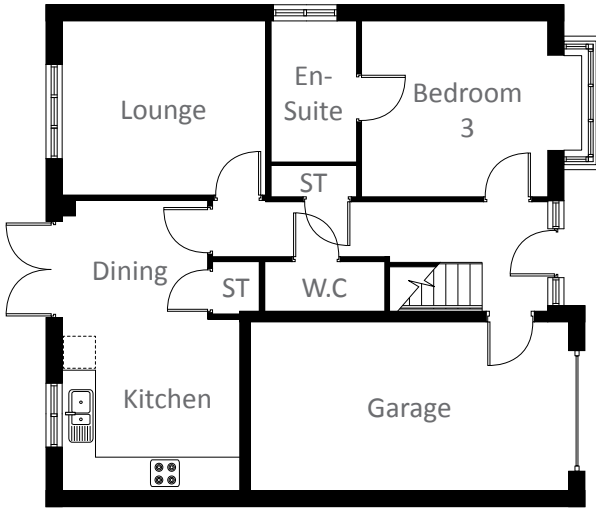
Artist's impression



[keepmoat.com](https://www.keepmoat.com)

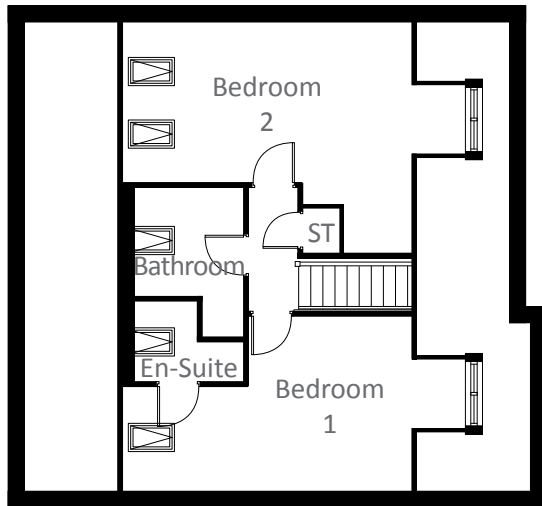
The Clayton - 3 bedroom home

# The Clayton - 3 bedroom home



## Ground floor

Kitchen / Dining	3288 x 5386	10'9" x 17'8"	†
Lounge	3765 x 3213	12'4" x 10'7"	
W.C	2218 x 912	7'3" x 3'0"	
Bedroom 3	3465 x 3270	11'4" x 10'9"	
En-Suite	1576 x 2604	5'2" x 8'7"	



## First floor

Bedroom 1	5439 x 2986	17'10" x 9'10"	
En-Suite	1181 x 1520	3'11" x 5'0"	
Bedroom 2	5439 x 3257	17'10" x 10'8"	
Bathroom	2034 x 2027	6'8" x 6'8"	



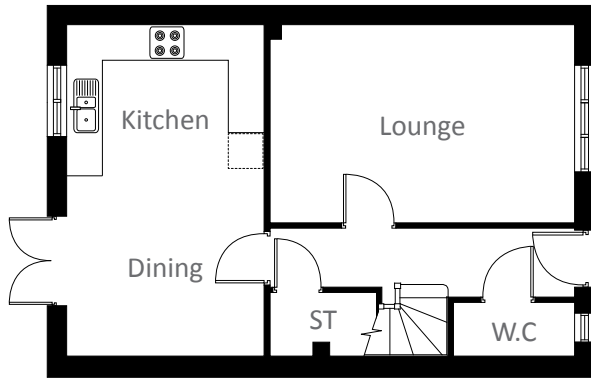
Artist's impression



[keepmoat.com](https://www.keepmoat.com)

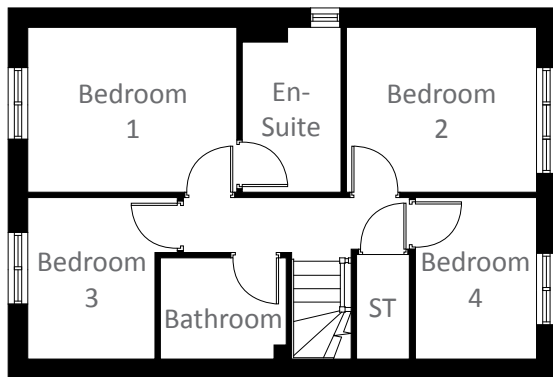
The Clifton - 4 bedroom home

# The Clifton - 4 bedroom home



## Ground floor

Kitchen / Dining	3285 x 5559	10'9" x 18'3"
Lounge	5069 x 3325	16'8" x 10'11"
W.C	2010 x 898	6'7" x 2'11"



## First floor

Bedroom 1	3469 x 2761	11'5" x 9'1"	
En-Suite	1643 x 2761	5'5" x 9'1"	†
Bedroom 2	3149 x 2761	10'4" x 9'1"	
Bedroom 3	2490 x 2705	8'2" x 8'10"	†
Bedroom 4	2010 x 2705	6'7" x 8'10"	
Bathroom	2091 x 1692	6'10" x 5'7"	



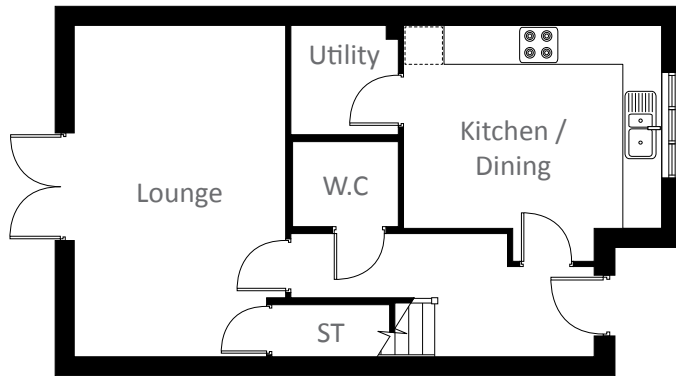
Artist's impression



[keepmoat.com](https://www.keepmoat.com)

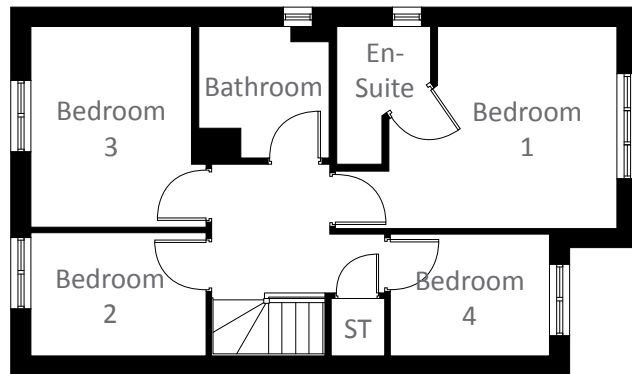
The Devonshire - 4 bedroom home

# The Devonshire - 4 bedroom home



## Ground floor

Kitchen / Dining	4300 x 3383	14'1" x 11'1"	
Lounge	3495 x 5522	11'6" x 18'1"	†
W.C.	1780 x 1425	5'10" x 4'8"	



## First floor

Bedroom 1	3815 x 3384	12'6" x 11'1"	
En-Suite	2325 x 1575	7'8" x 5'2"	†
Bedroom 2	2925 x 2061	9'7" x 6'9"	
Bedroom 3	2688 x 3367	8'10" x 11'1"	
Bedroom 4	2663 x 2045	8'9" x 6'9"	
Bathroom	2186 x 2199	7'2" x 7'3"	†



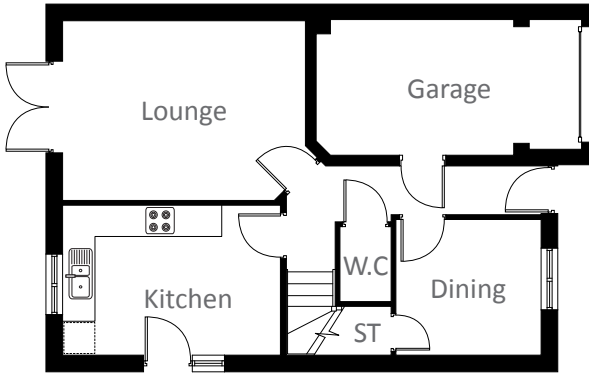
Artist's impression



[keepmoat.com](https://www.keepmoat.com)

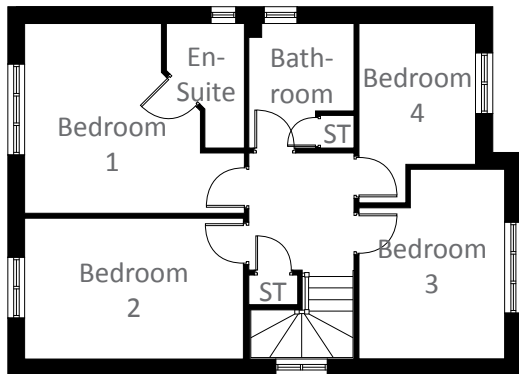
The Rowingham - 4 bedroom home

# The Rowingham - 4 bedroom home



## Ground floor

Kitchen	4263 x 2935	14'0" x 9'8"	
Dining	2835 x 2650	9'4" x 8'8"	
Lounge	4747 x 3506	15'7" x 11'6"	†
W.C	1010 x 1450	3'4" x 4'9"	



## First floor

Bedroom 1	3422 x 3694	11'3" x 12'1"	
En-Suite	1519 x 2425	5'0" x 7'11"	†
Bedroom 2	4263 x 2747	14'0" x 9'0"	
Bedroom 3	2835 x 3697	9'4" x 12'2"	†
Bedroom 4	2272 x 2745	7'5" x 9'0"	
Bathroom	2050 x 2425	6'9" x 7'11"	†





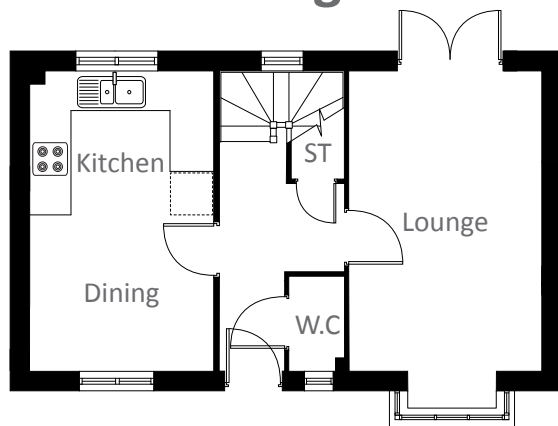
Artist's impression



[keepmoat.com](https://www.keepmoat.com)

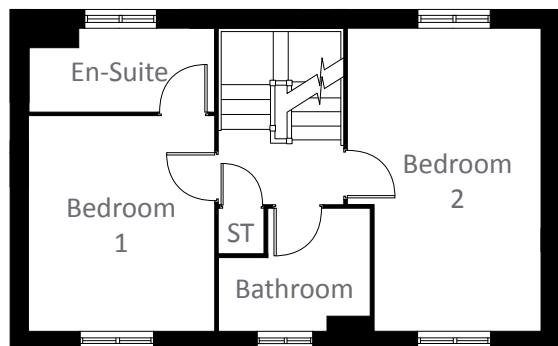
The Cambridge - 4 bedroom home

# The Cambridge - 4 bedroom home



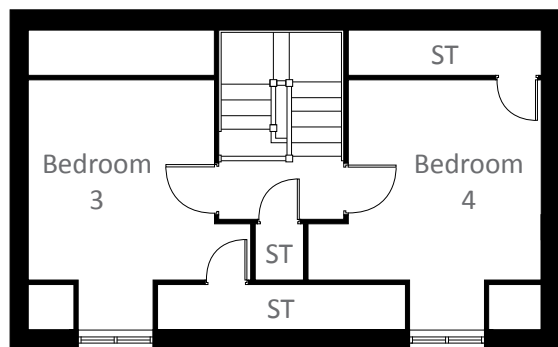
## Ground floor

Kitchen / Dining	2908 x 4846	9'7" x 15'11"
Lounge	3048 x 4846	10'0" x 15'11"
W.C.	900 x 1660	2'11" x 5'5"



## First floor

Bedroom 1	2960 x 3439	9'9" x 11'3"	
En-Suite	2960 x 1315	9'9" x 4'4"	†
Bedroom 2	3048 x 4846	10'0" x 15'11"	†
Bathroom	2420 x 1940	7'11" x 6'4"	†



## Second floor

Bedroom 3	3048 x 3455	10'0" x 11'4"
Bedroom 4	2960 x 3455	9'9" x 11'4"



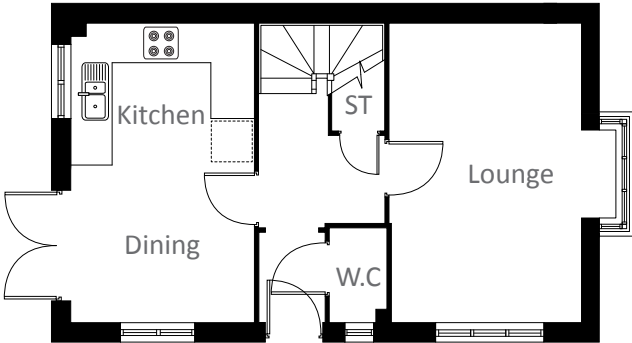
Artist's impression



[keepmoat.com](https://www.keepmoat.com)

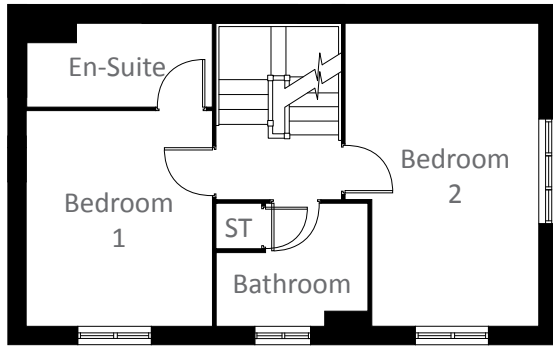
The Overton - 4 bedroom home

# The Overton - 4 bedroom home



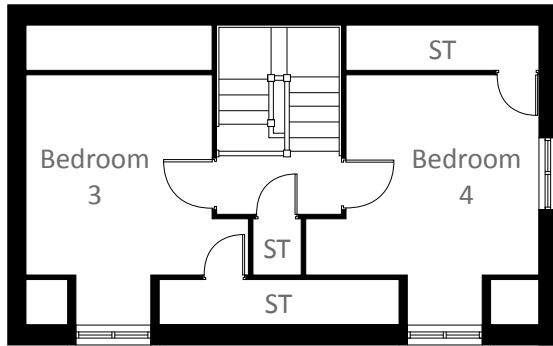
## Ground floor

Kitchen / Dining	2921 x 4847	9'7" x 15'11"	
Lounge	3711 x 4847	12'2" x 15'11"	†
W.C	900 x 1660	2'11" x 5'5"	



## First floor

Bedroom 1	2960 x 3439	9'9" x 11'3"	
En-Suite	2960 x 1315	9'9" x 4'4"	†
Bedroom 2	3086 x 4847	10'1" x 15'11"	†
Bathroom	2422 x 1940	7'11" x 6'4"	†



## Second floor

Bedroom 3	3560 x 4126	11'8" x 13'6"	†
Bedroom 4	3741 x 4126	12'3" x 13'6"	†

# The easier way to buy

Whether you're buying your first home, or your next one, **Help to Buy** makes your dream home more affordable.



Backed by  
HM Government



## You only need a 5% deposit

With Help to Buy you can move in even if you haven't got a big deposit.

## Receive up to 20% towards your home

You can get a Government-backed equity loan for up to 20% of the purchase price, interest free for the first 5 years.

## Opening the door to owning your home

Help to Buy has helped over 160,000 people buy their dream home - it can help you too.

# Home to sell? We can help

As the name suggests, **Easymove** is the easy way to sell your home.

We can take the hassle out of selling your current home in three easy steps.

The logo for Easymove, with 'Easy' in a blue script font and 'move' in a green sans-serif font. A green triangle is in the top right corner of the page.

**Easymove**

## **1. We'll do the hard work for you**

We'll arrange two independent valuations and agree a selling price with you.

## **2. Reserve and relax**

Once agreed, we will complete an Easymove reservation form and then help you manage the sale of your existing home.

## **3. Let us settle the bill**

We'll pay your estate agent's fees. So with Easymove you don't just save time, you save money too.

# Creating the perfect place to call home

Since 1928 we've created great places people are proud to call home. Whether you're buying your first home, or your next one, here's what you can expect from us.

## **The highest build standards. Always.**

We use the latest materials and construction techniques to create homes that are built to last.

## **We're with you all the way.**

From your first visit to long after moving in, we're here to give you all the support you need.

## **We never forget it's your home.**

From a great choice of kitchens and bathrooms to luxurious finishing touches, it's easy to make your home yours.

## **We'll make the move more affordable.**

From Help to Buy to saving you money when you sell your home, moving costs less than you think with Keepmoat Homes.

