

# PENROSE MAYBANK



4



2



2



\*Nos. 6, 10, 36, 47, 56 & 58 are handed. CGI shows no. 36

The Penrose is available in:  
No. 6\*



Wall finish

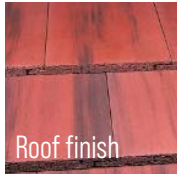


Roof finish

Nos. 10\*, 11 & 47\*



Wall finish



Roof finish

Nos. 36\*, 37, 56\*, 58\* & 59

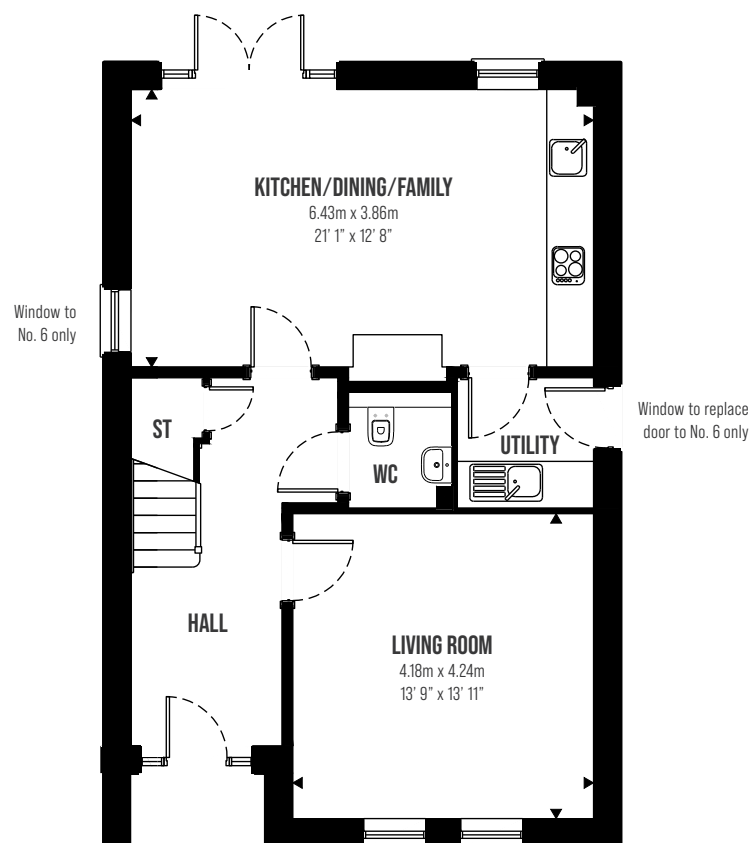


Wall finish

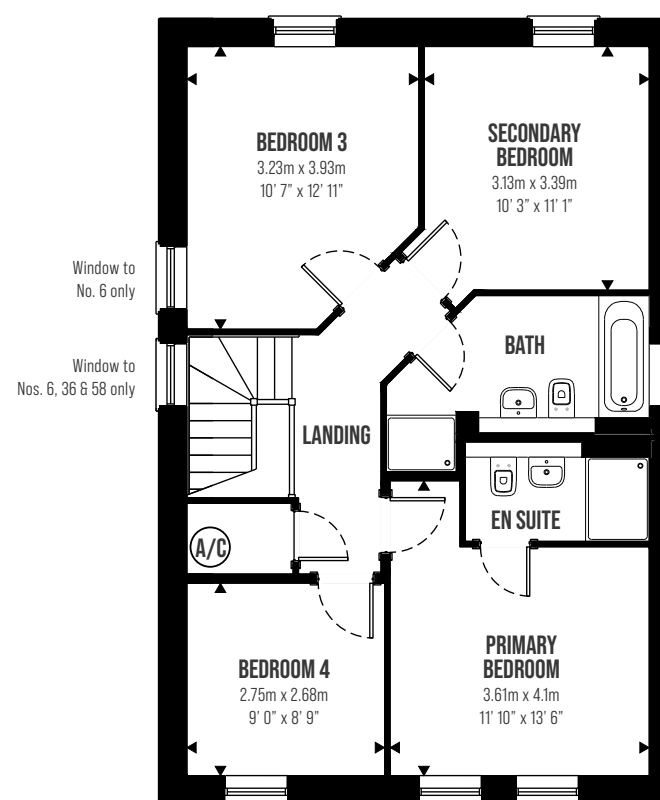


Roof finish

SPITFIRE  
HOMES



GROUND FLOOR



FIRST FLOOR

# PENROSE

Nos. 6\*, 10\*, 11, 36\*,  
37, 47\*, 56\*, 58\* & 59

Stylish detached home blending social, open-plan dining and family areas with more private, cozy living spaces.

- Large kitchen, dining and family area with glazed French doors to the rear garden
- Expansive separate living room
- Four generous bedrooms
- Well-appointed primary bedroom with premium en suite