

FARLEIGH MAYBANK



4



2



1



*Nos. 8, 15, 24, 42, 45 & 48 are handed. CGI shows no. 15 & 16

The Farleigh is available in:

Nos. 8*, 9, 42*, 43, 45* & 46

Nos. 15*, 16, 24*, 25, 48* & 49



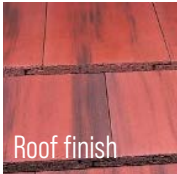
Wall finish



Roof finish

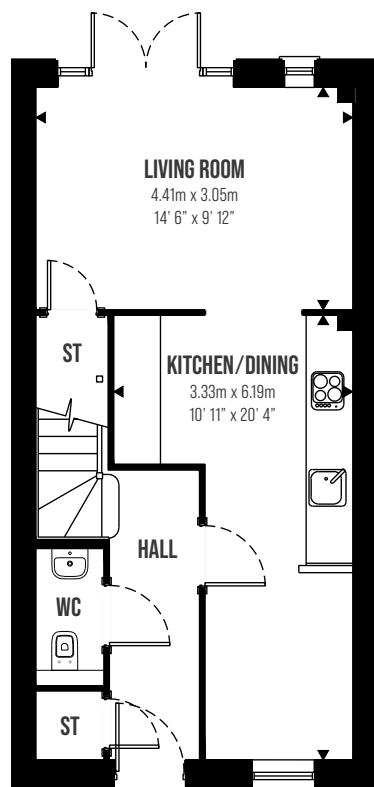


Wall finish

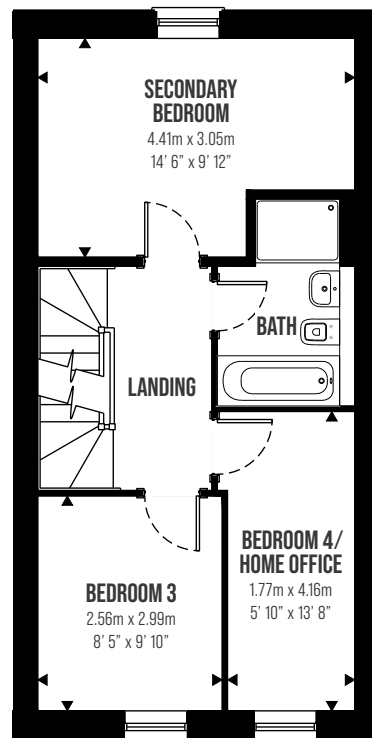


Roof finish

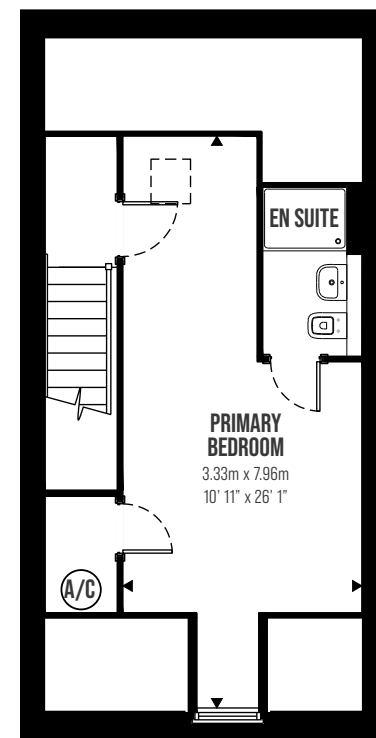
SPITFIRE
HOMES



GROUND FLOOR



FIRST FLOOR



SECOND FLOOR

FARLEIGH

Nos. 8*, 9, 15*, 16,
24*, 25, 42*, 43,
45*, 46, 48* & 49

Contemporary four-bedroom townhouse with accommodation spanning three floors and an impressive primary bedroom suite.

- Open plan kitchen and dining area offering an ideal social space.
- Expansive living room with glazed French doors.
- Statement top floor primary bedroom suite.
- Fourth bedroom ideal to double as a study or nursery.