

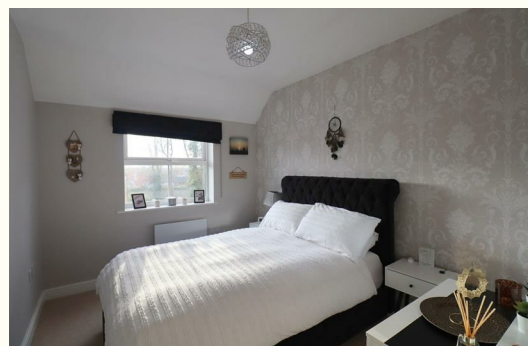


STEPHENSON BROWNE



**10 Berkeley Towers, Wistaston
CW2 6GR
£725 PCM**

Available 14th July! An unfurnished two bedroom second floor apartment. Comprising open plan fitted kitchen and living area, master bedroom, second bedroom and a bathroom. Double glazing throughout. Great condition, great property! Allocated parking. Secure entry. Sorry no cats or dogs.



IMPORTANT NOTICE

Whilst we endeavour to ensure accuracy of our letting's descriptions, it is the responsibility of the viewer to ask any more specific questions in any area of importance before making a formal application. Services are not tested prior to move in. All tenancies are available initially for a minimum term which will be confirmed by property by the agent. With the exception of shared accommodation, the tenant is responsible for council tax, water, gas and electric plus TV/media where applicable - please note we cannot confirm the cost of these as they are different from person-to-person usage. Rent is paid one month in advance at all times. No cash alternative deposit scheme is offered.

| Energy Efficiency Rating | | |
|---|---------|-----------|
| | Current | Potential |
| Very energy efficient - lower running costs | | |
| (92 plus) A | | |
| (81-91) B | | |
| (69-80) C | | |
| (55-68) D | | |
| (39-54) E | | |
| (21-38) F | | |
| (1-20) G | | |
| Not energy efficient - higher running costs | | |
| | 62 | 79 |
| England & Wales | | |
| EU Directive 2002/91/EC | | |

| Environmental Impact (CO ₂) Rating | | |
|---|---------|-----------|
| | Current | Potential |
| Very environmentally friendly - lower CO ₂ emissions | | |
| (92 plus) A | | |
| (81-91) B | | |
| (69-80) C | | |
| (55-68) D | | |
| (39-54) E | | |
| (21-38) F | | |
| (1-20) G | | |
| Not environmentally friendly - higher CO ₂ emissions | | |
| | | |
| England & Wales | | |
| EU Directive 2002/91/EC | | |



232 Nantwich Road, Crewe, Cheshire, CW2 6BP

T: 01270 252251 | E: crewelettings@stephensonbrowne.co.uk | W: www.stephensonbrowne.co.uk