

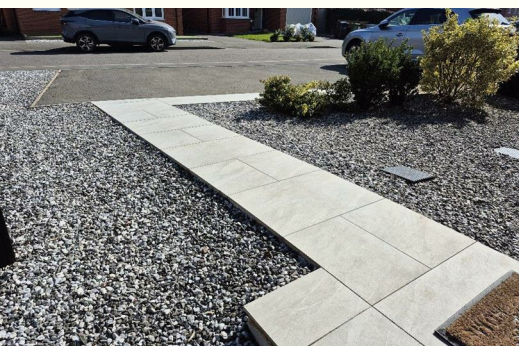


STEPHENSON BROWNE



**9 Joe Brown Close, Crewe
CW1 4LN
£1,150 PCM**

This beautiful three bedroom semi-detached property is well presented throughout. Located a 2 minute drive to Leighton Hospital and Bentley Motors, the accommodation comprises entrance hall, downstairs WC, lounge, kitchen with integrated fridge/freezer and oven with hob plus a handy utility area. To the first floor can be found three bedrooms with the master boasting an en suite and built in full mirror wardrobes, plus a family bathroom. To the outside is driveway parking for 2, and a secure enclosed garden with lovely patio to the rear. Pets will be considered though rent may be increased.



Important Notice

Whilst we endeavour to ensure accuracy of our letting's descriptions, it is the responsibility of the viewer to ask any more specific questions in any area of importance before making a formal application. Services are not tested prior to move in. All tenancies are available initially for a minimum term which will be confirmed by property by the agent. With the exception of shared accommodation, the tenant is responsible for council tax, water, gas and electric plus TV/media where applicable - please note we cannot confirm the cost of these as they are different from person-to-person usage. Rent is paid one month in advance at all times. No cash alternative deposit scheme is offered.

Energy Efficiency Rating			Environmental Impact (CO ₂) Rating		
		Potential			Potential
Very energy efficient - lower running costs			Very environmentally friendly - lower CO ₂ emissions		
(92 plus) A		95	(92 plus) A		
(81-91) B	83		(81-91) B		
(69-80) C			(69-80) C		
(55-68) D			(55-68) D		
(39-54) E			(39-54) E		
(21-38) F			(21-38) F		
(1-20) G			(1-20) G		
Not energy efficient - higher running costs			Not environmentally friendly - higher CO ₂ emissions		
England & Wales		EU Directive 2002/91/EC	England & Wales		EU Directive 2002/91/EC



232 Nantwich Road, Crewe, Cheshire, CW2 6BP

T: 01270 252251 | E: crewelettings@stephensonbrowne.co.uk | W: www.stephensonbrowne.co.uk