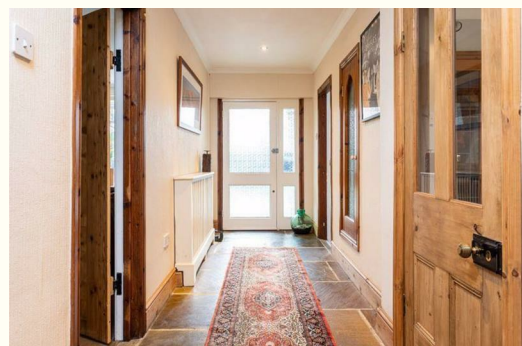


STEPHENSON BROWNE




**24 Station Road, Nr Nantwich
Cheshire CW5 6DW
£1,595 PCM**

Available 28th April! This beautifully presented, full of character three/four bedroom duplex bungalow is located in Aston Juxta Mondrum adjoining Worleston Village. Spacious throughout and boasting ample parking, electric gates and stunning field views. To the ground floor is a porch, entrance hall, lounge, dining room, kitchen and garden room, two double bedrooms, en suite and family bathroom. A spiral staircase leads to the first floor where there is a single bedroom, double bedroom with walk-in dressing room and en-suite shower room. Externally the property benefits from a large courtyard, front lawned garden, ample gated parking, an open fronted oak framed double car port and a large garage workshop with staircase ascending to a central mezzanine providing a small office/study.



important notice

Energy Efficiency Rating		
	Current	Potential
Very energy efficient - lower running costs		
(92 plus) A		80
(81-91) B		
(69-80) C		
(55-68) D		
(39-54) E	61	
(21-38) F		
(1-20) G		
Not energy efficient - higher running costs		
England & Wales		EU Directive 2002/91/EC

Environmental Impact (CO ₂) Rating		
	Current	Potential
Very environmentally friendly - lower CO ₂ emissions		
(92 plus) A		
(81-91) B		
(69-80) C		
(55-68) D		
(39-54) E		
(21-38) F		
(1-20) G		
Not environmentally friendly - higher CO ₂ emissions		
England & Wales		EU Directive 2002/91/EC 



232 Nantwich Road, Crewe, Cheshire, CW2 6BP

T: 01270 252251 | E: crewelettings@stephensonbrowne.co.uk | W: www.stephensonbrowne.co.uk