

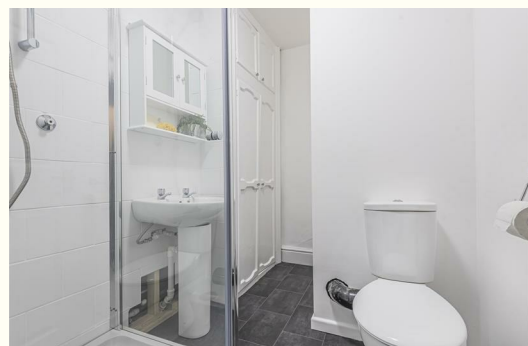



STEPHENSON BROWNE




**Room 3 153 Ruskin Road, Crewe
Cheshire CW2 7JX
£525**

Located in a spacious house share, this lovely well presented extremely large double bedroom is fully furnished to include a desk space for any home working requirements. WIFI is included as are all bills so £525 covers everything. The room is on the upper floor. THIS IS SINGLE OCCUPANCY ONLY AND NO PETS ALLOWED. An outdoor sitting area is available and parking is available strictly first come first served basis.



| Energy Efficiency Rating | | |
|--|----------------------------|---|
| | Current | Potential |
| <i>Very energy efficient - lower running costs</i> | | |
| (92 plus) A | | |
| (81-91) B | | |
| (69-80) C | | |
| (55-68) D | | |
| (39-54) E | | |
| (21-38) F | | |
| (1-20) G | | |
| <i>Not energy efficient - higher running costs</i> | | |
| England & Wales | EU Directive 2002/91/EC |  |

| Environmental Impact (CO ₂) Rating | | |
|---|----------------------------|---|
| | Current | Potential |
| <i>Very environmentally friendly - lower CO₂ emissions</i> | | |
| (92 plus) A | | |
| (81-91) B | | |
| (69-80) C | | |
| (55-68) D | | |
| (39-54) E | | |
| (21-38) F | | |
| (1-20) G | | |
| <i>Not environmentally friendly - higher CO₂ emissions</i> | | |
| England & Wales | EU Directive 2002/91/EC |  |



232 Nantwich Road, Crewe, Cheshire, CW2 6BP

T: 01270 252251 | E: crewelettings@stephensonbrowne.co.uk | W: www.stephensonbrowne.co.uk