

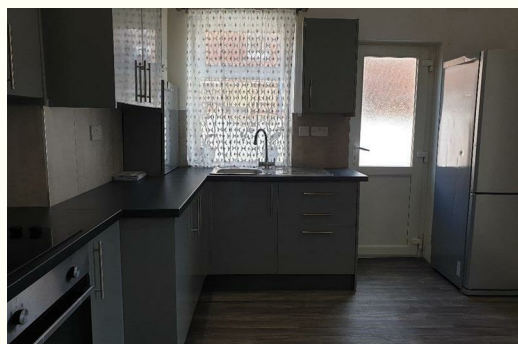



STEPHENSON BROWNE




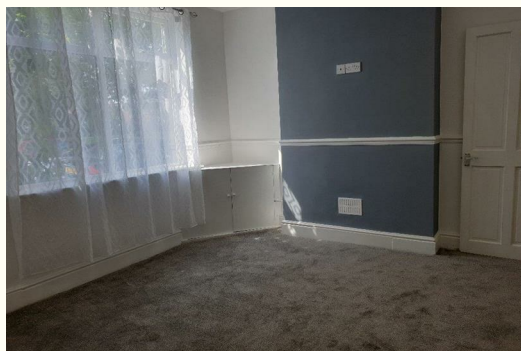
**89a Richard Moon Street, Crewe  
CW1 3AT  
£575 PCM**

Available 3rd June. Having been re decorated and had new flooring throughout this spacious 1 bedroom flat boasts a great size modern kitchen with oven and hob, utility area, modern bathroom and has the real bonus of some lovely outdoor space. The lounge is a good size and the bedroom a comfortable double. Located almost opposite a supermarket, 10 minutes walk into town and close to local bus routes, this is a great and convenient spot. Sorry no pets



Energy Efficiency Rating		
	Current	Potential
Very energy efficient - lower running costs		
(92 plus) A		
(81-91) B		
(69-80) C		
(55-68) D		
(39-54) E		
(21-38) F		
(1-20) G		
Not energy efficient - higher running costs		
<b>England &amp; Wales</b>	EU Directive 2002/91/EC	

Environmental Impact (CO <sub>2</sub> ) Rating		
	Current	Potential
Very environmentally friendly - lower CO <sub>2</sub> emissions		
(92 plus) A		
(81-91) B		
(69-80) C		
(55-68) D		
(39-54) E		
(21-38) F		
(1-20) G		
Not environmentally friendly - higher CO <sub>2</sub> emissions		
<b>England &amp; Wales</b>	EU Directive 2002/91/EC	



232 Nantwich Road, Crewe, Cheshire, CW2 6BP

T: 01270 252251 | E: crewelettings@stephensonbrowne.co.uk | W: www.stephensonbrowne.co.uk