

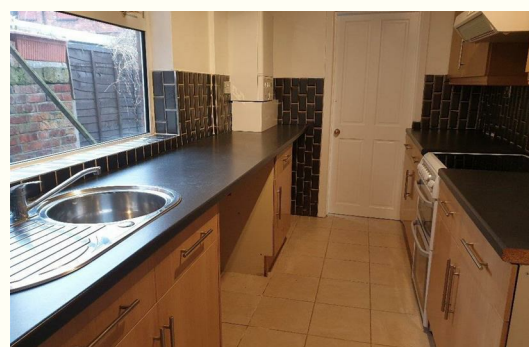
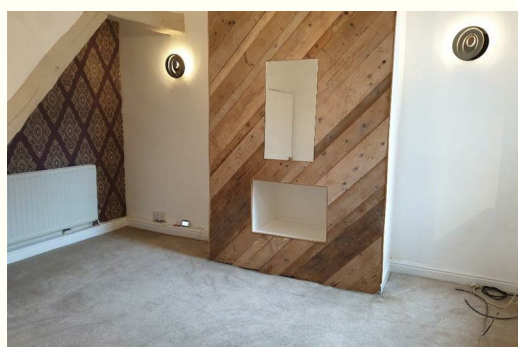


STEPHENSON BROWNE



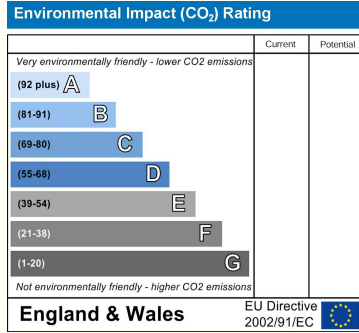
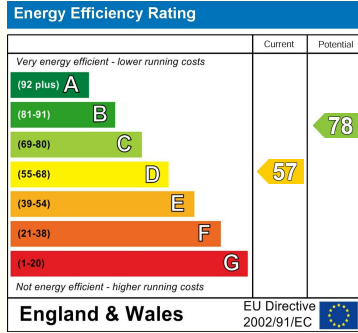
**7 Hall O Shaw Street, Cheshire
CW1 4AE
£695 PCM**

VIEWINGS AVAILABLE 30th April. this two bed, two bath property sits a stones throw from Crewe town centre and retail park so everything you could need is on your doorstep. In addition with a park on the same street and the railway station a 10 minute walk its perfect! Two reception rooms, two double bedrooms and a GARAGE at the rear for storage.



Important Notice

Whilst we endeavor to ensure accuracy of our lettings descriptions, it is the responsibility of the viewer to ask anymore specific questions in any area of importance before making a formal application. Services are not tested prior to move in. All tenancies are available initially for a minimum term which will be confirmed by property by the agent. With the exception of shared accommodation, the tenant is responsible for the council tax, water, gas and electric plus TV/media where applicable - please note we can not confirm the cost of these as they are different from person to person usage. Rent is paid one month in advance at all times. No cash alternative deposit scheme is offered.



232 Nantwich Road, Crewe, Cheshire, CW2 6BP

T: 01270 252251 | E: crewelettings@stephensonbrowne.co.uk | W: www.stephensonbrowne.co.uk