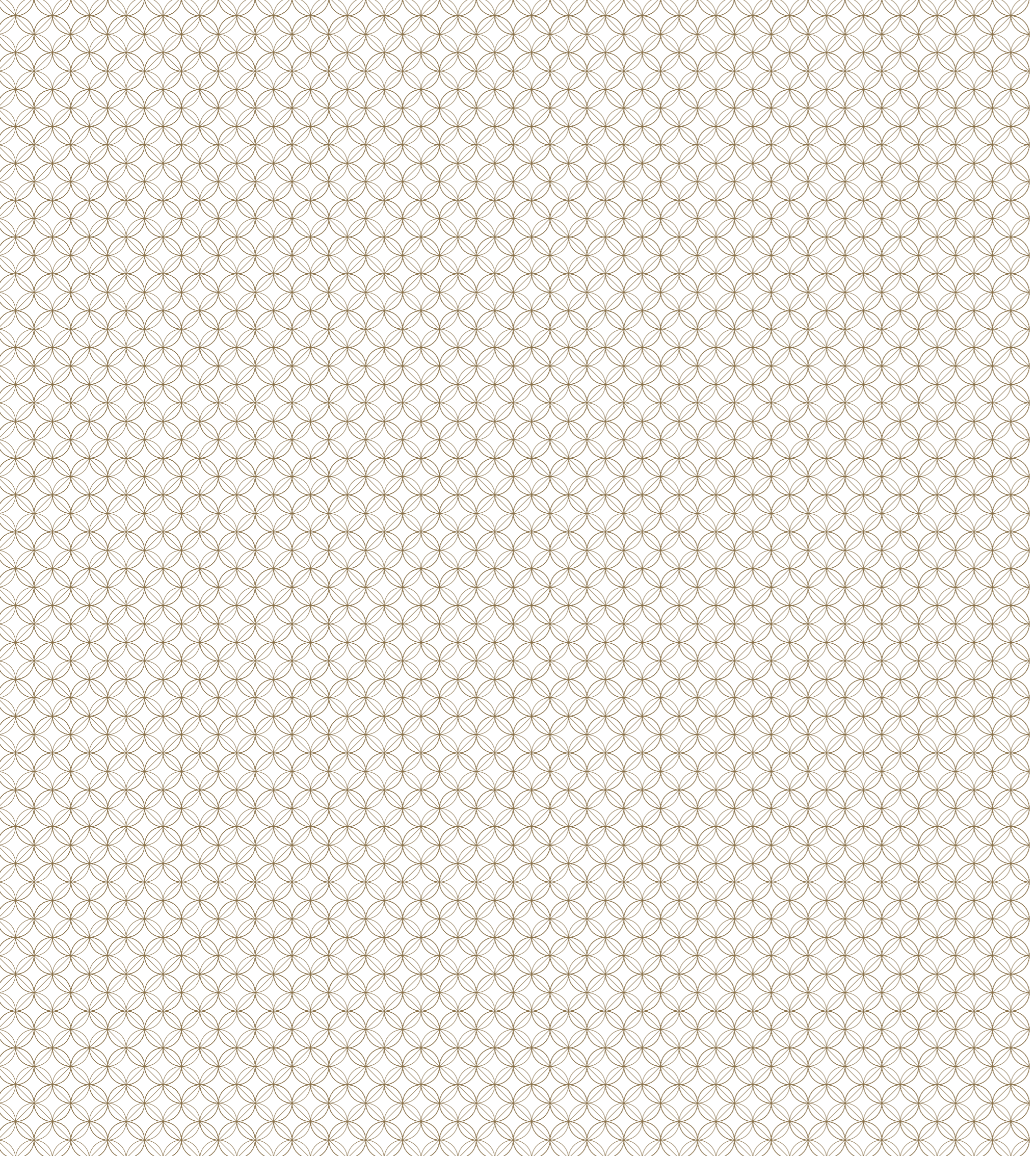


# MAYFAIR PARK RESIDENCES

AN EXCLUSIVE COLLECTION OF RESIDENCES

Managed by

 *Dorchester Collection*



MAYFAIR PARK  
RESIDENCES

*Clivedale and  
Dorchester Collection,  
a perfect combination.*

Set in the heart of London's most prestigious district with views across Hyde Park, Mayfair Park Residences is an exclusive collection of private apartments and townhouses, ranging from generously proportioned pieds-à-terre, to a magnificent penthouse with rooftop pool. The super-prime location and specification of these residences is complemented perfectly by exclusive Five-Star amenities and in-house services delivered by the adjoining Dorchester Collection London hotel, 45 Park Lane. The result is the ultimate in sophisticated city living, for those who insist on the very best of everything.

A development by

**C**  
CLIVEDALE  
LONDON

Managed by

**)** *Dorchester Collection*







Oxford Street

Hanover Square

Regent Street

Berkeley Square

Piccadilly Circus

Grosvenor Square

Mount Street Gardens

Green Park

Piccadilly

Park Lane

Hyde Park

MAYFAIR PARK  
RESIDENCES  
Managed by  
Dorchester Collection

The Dorchester  
Dorchester Collection

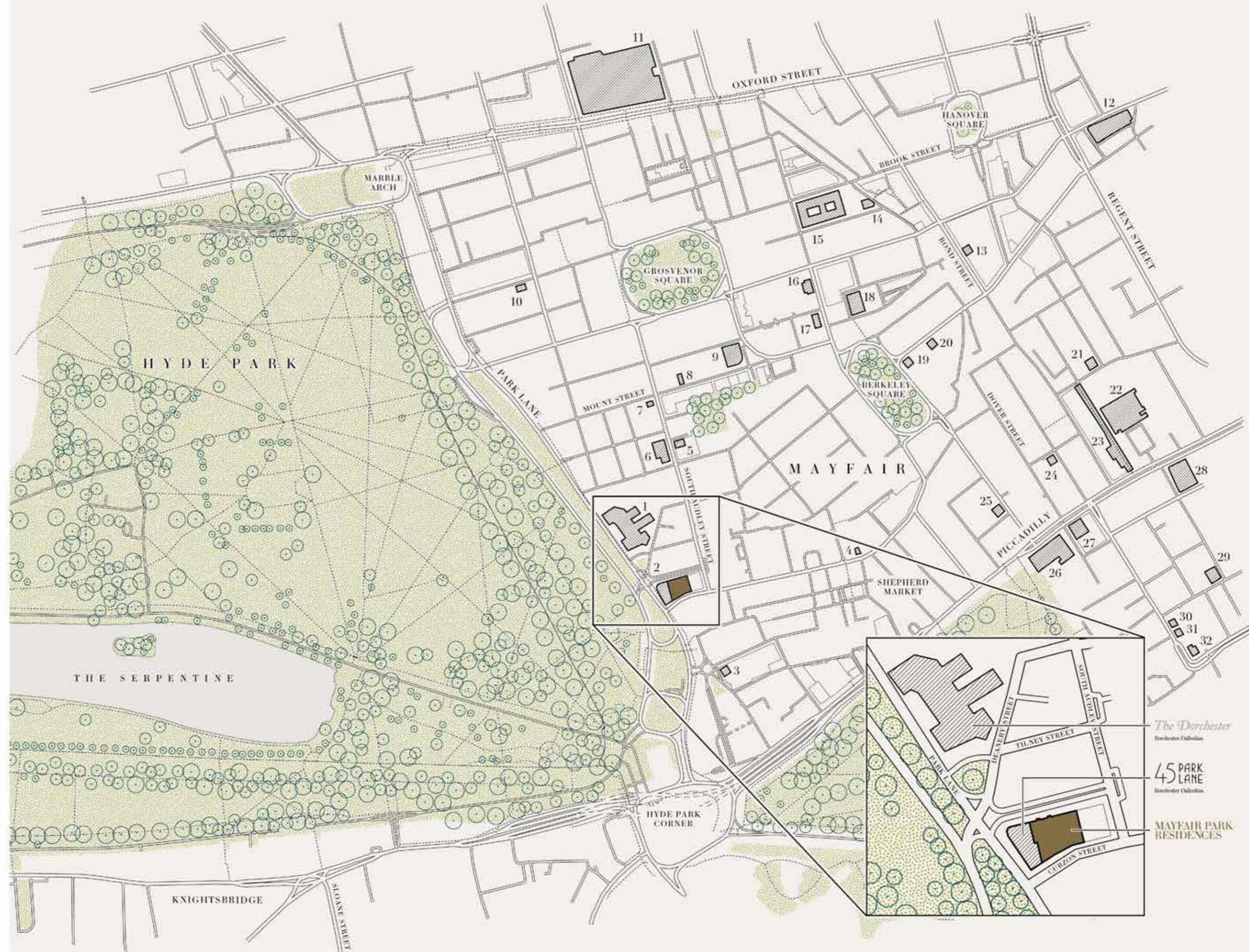
45 PARK  
LANE  
Dorchester Collection



# The Essence of Mayfair

This is the best address in the Capital's most central and sought after location. Bordered by the iconic thoroughfares of Piccadilly, Park Lane, Oxford Street and Regent Street. Mayfair is a vibrant and exciting area where there is always something to enjoy, whether it be the galleries of Bond Street or the boutique retailers along Mount Street, the infinite possibilities of London living are only minutes away.

- 1 ..... The Dorchester
- 2 ..... 45 Park Lane
- 3 ..... Nobu London
- 4 ..... Geo F. Trumper
- 5 ..... Thomas Goode
- 6 ..... Kai Mayfair
- 7 ..... James Purdey & Sons
- 8 ..... Scott's
- 9 ..... The Connaught
- 10 ..... La Gavroche
- 11 ..... Selfridges & Co
- 12 ..... Liberty
- 13 ..... Sotheby's
- 14 ..... La Petite Maison
- 15 ..... Claridge's
- 16 ..... C London
- 17 ..... Hedonism Wines
- 18 ..... Gagosian Gallery
- 19 ..... Jack Barclay
- 20 ..... Hakkasan Mayfair
- 21 ..... Cecconi's Mayfair
- 22 ..... The Royal Academy of Arts
- 23 ..... Burlington Arcade
- 24 ..... Gymkhana
- 25 ..... Novikov
- 26 ..... The Ritz London
- 27 ..... The Wolseley
- 28 ..... Fortnum & Mason
- 29 ..... Christie's
- 30 ..... John Lobb London
- 31 ..... Lock & Co. Hatters
- 32 ..... Berry Bros. & Rudd



*The Dorchester*  
Dorchester Collection

**45 PARK LANE**  
Dorchester Collection

**MAYFAIR PARK RESIDENCES**



## *Mayfair. The ultimate embodiment of elegant living*

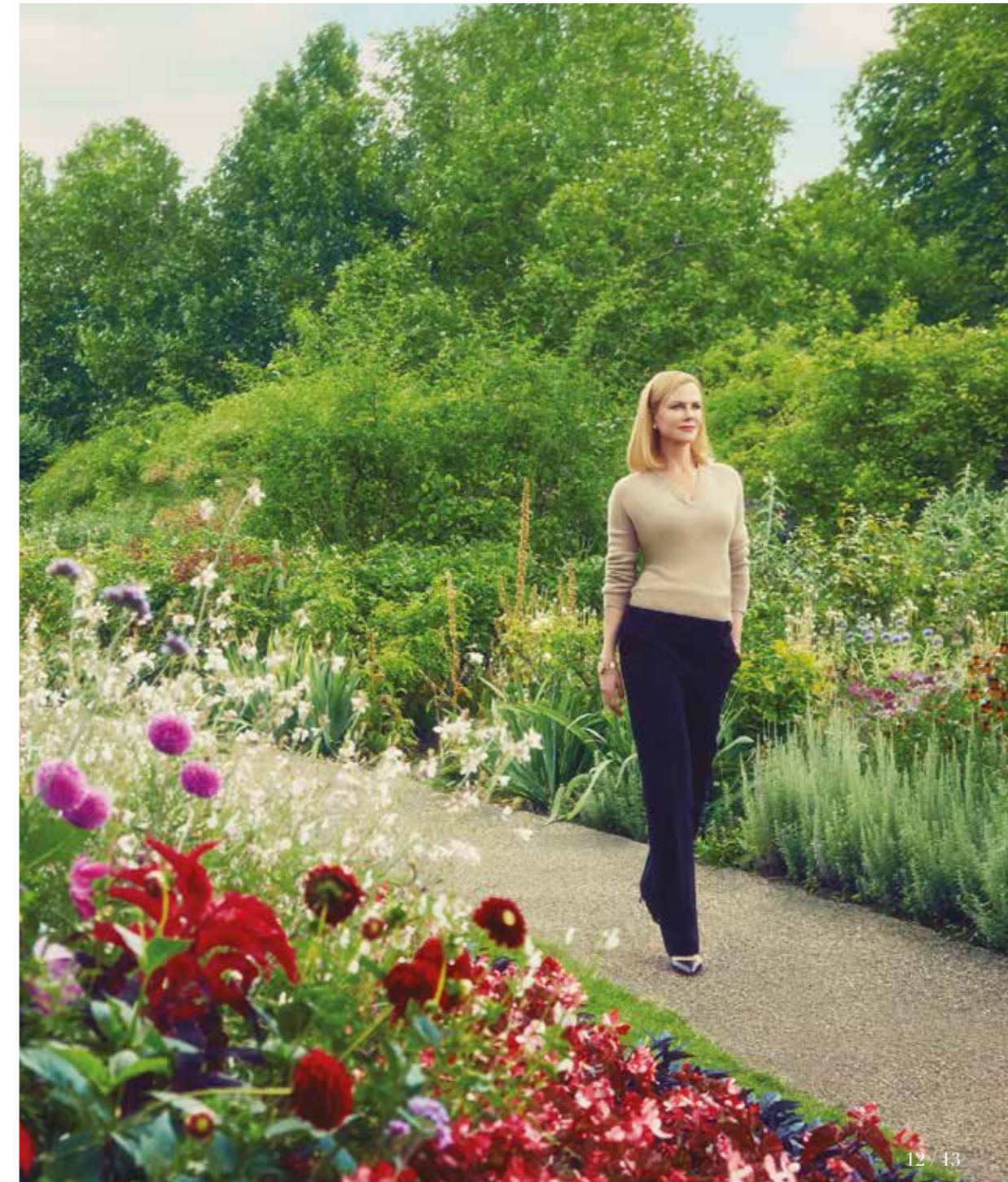
For all its secluded gardens and tranquil squares, lined with impressive historic buildings, Mayfair still breathes the life and spirit of a great city, offering residents a diverse range of excellent restaurants and exclusive shops. An ideal blend of tradition and modernity, this is urban life at its most refined.



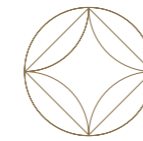


*A taste of idyllic British countryside  
at the very heart of London*

On the other side of Park Lane, Hyde Park is the finest of London's Royal Parks and its 350 peaceful acres offer the ideal, natural antidote to the bustle of the city.







# THE ARTISTRY OF THE EVERYDAY

By exclusive arrangement, the internationally celebrated Dorchester Collection is bringing its passion for innovation and excellence to the delivery of services at Mayfair Park Residences.



## *Committed to excellence*

The level of excellence offered by Dorchester Collection hotels is legendary and this is the first time they have agreed to make their services available to anyone except their own privileged guests. The result will be a level of luxury never before experienced in any London residential development.





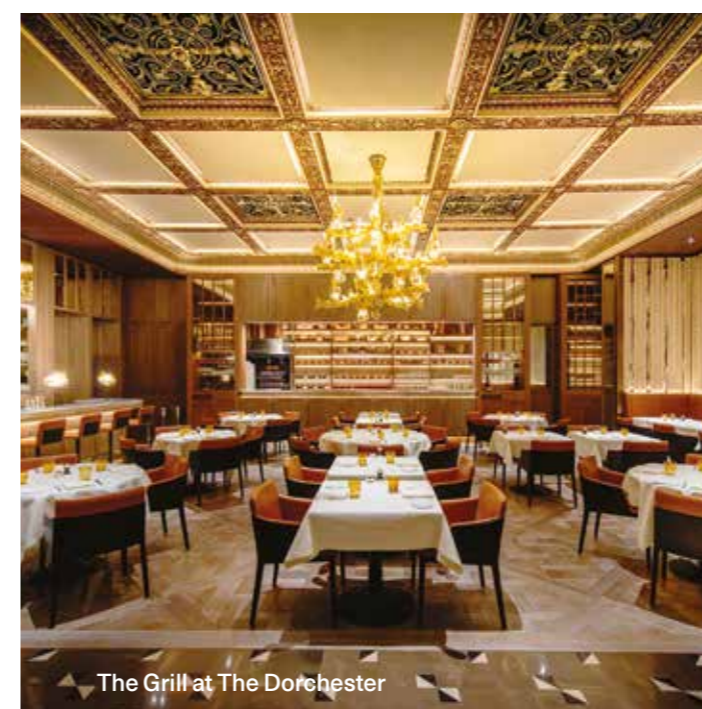
CUT at 45 Park Lane



24-hour concierge



Chauffeur driven Rolls Royce house car



The Grill at The Dorchester



## A new benchmark for London living

The quality of services at Mayfair Park Residences will be truly exceptional. Over and beyond the 24-hour concierge and security, valet parking and chauffeur services, residents will be treated very much as guests of a Dorchester Collection hotel. That means being able to order room service at any time of the day or night or, if preferred, to enlist the skills of a personal chef. One call is all it takes to organise someone to go shopping or walk the dog, order flowers or arrange dry cleaning. Housekeeping, personal training and more will all be available on an à la carte basis.

### Core Services\*

- Operations Manager
- Dedicated 24-hour concierge and security
- Valet parking (24-hours)
- Secure underground parking
- Residents' house car and chauffeur service
- Health Club and Spa managed by Dorchester Collection
- Access to 45 Park Lane and The Dorchester amenities with full signing privileges on-site
- Cleaning and maintenance of the common areas including window cleaning

### In-Residence à la Carte Services\*\*

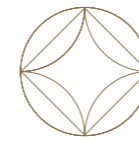
- 24-hour in-residence dining
- Bespoke private catering service
- Housekeeping
- Personal chef
- Maintenance and technical assistance
- Florist services

### Additional à la Carte Services\*\*

- Personal fitness trainers and classes
- Spa treatments
- Grocery shopping service
- Laundry, dry cleaning, pressing and seamstress services
- Sommelier expertise
- Theatre bookings
- Dog walking / pet care

\* Included within the service charge

\*\*Not included within the service charge



# THE BUILDING OF A HERITAGE

By marrying traditional skills  
with contemporary imagination,  
Clivedale has realised an impressive  
development destined to become a  
treasured feature of the Mayfair scene.





## *A seamless blend of traditional and contemporary*

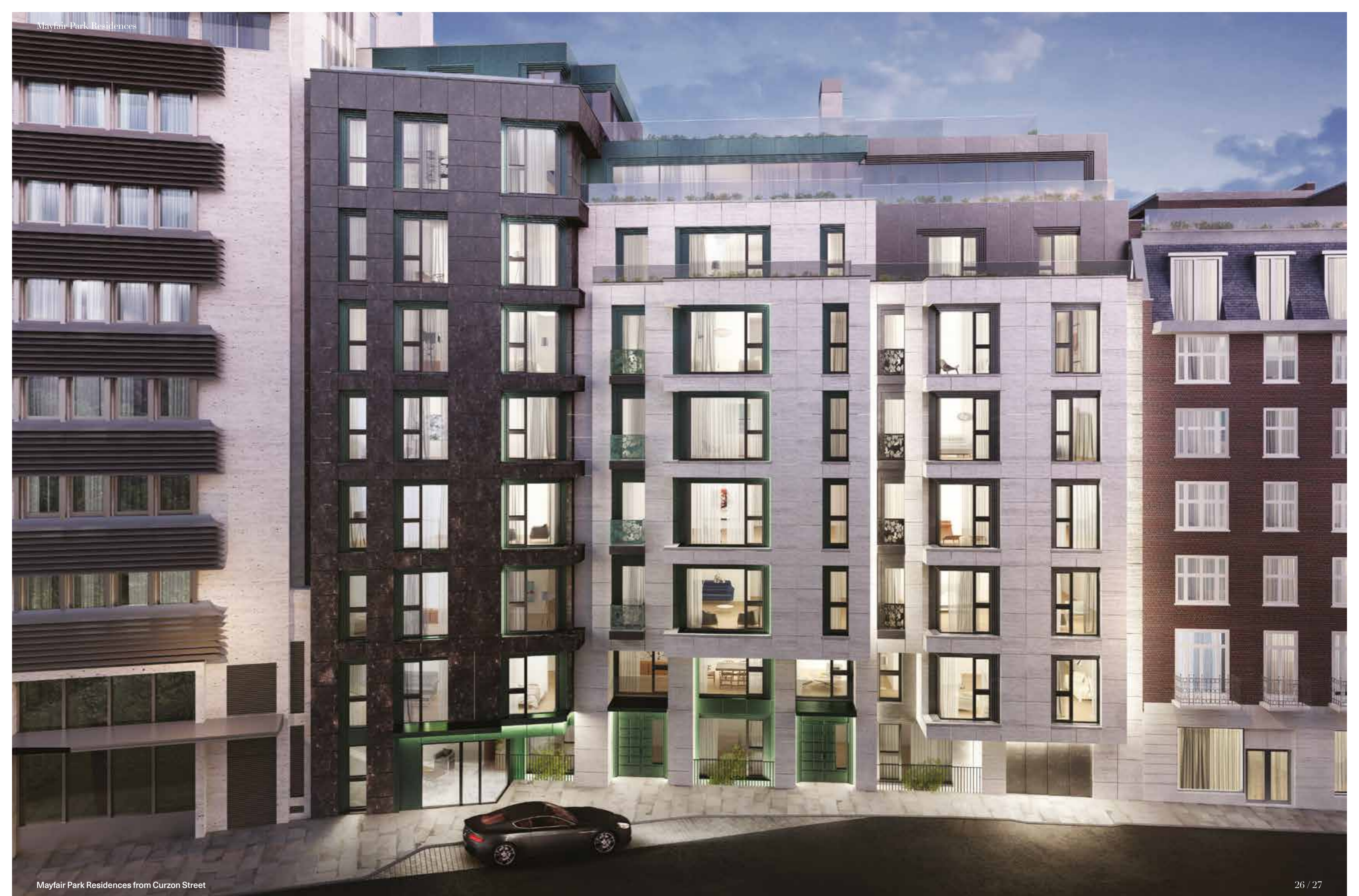
The grand Curzon Street elevations of this ambitious development make a boldly modern statement. Their design provides a counterpoint to the immaculately restored Georgian façades on Stanhope Gate, one in black-painted brick, the other in Portland stone, which are continued by a third, more contemporary in feel, in hand-cut white travertine.

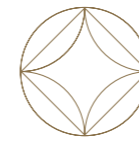
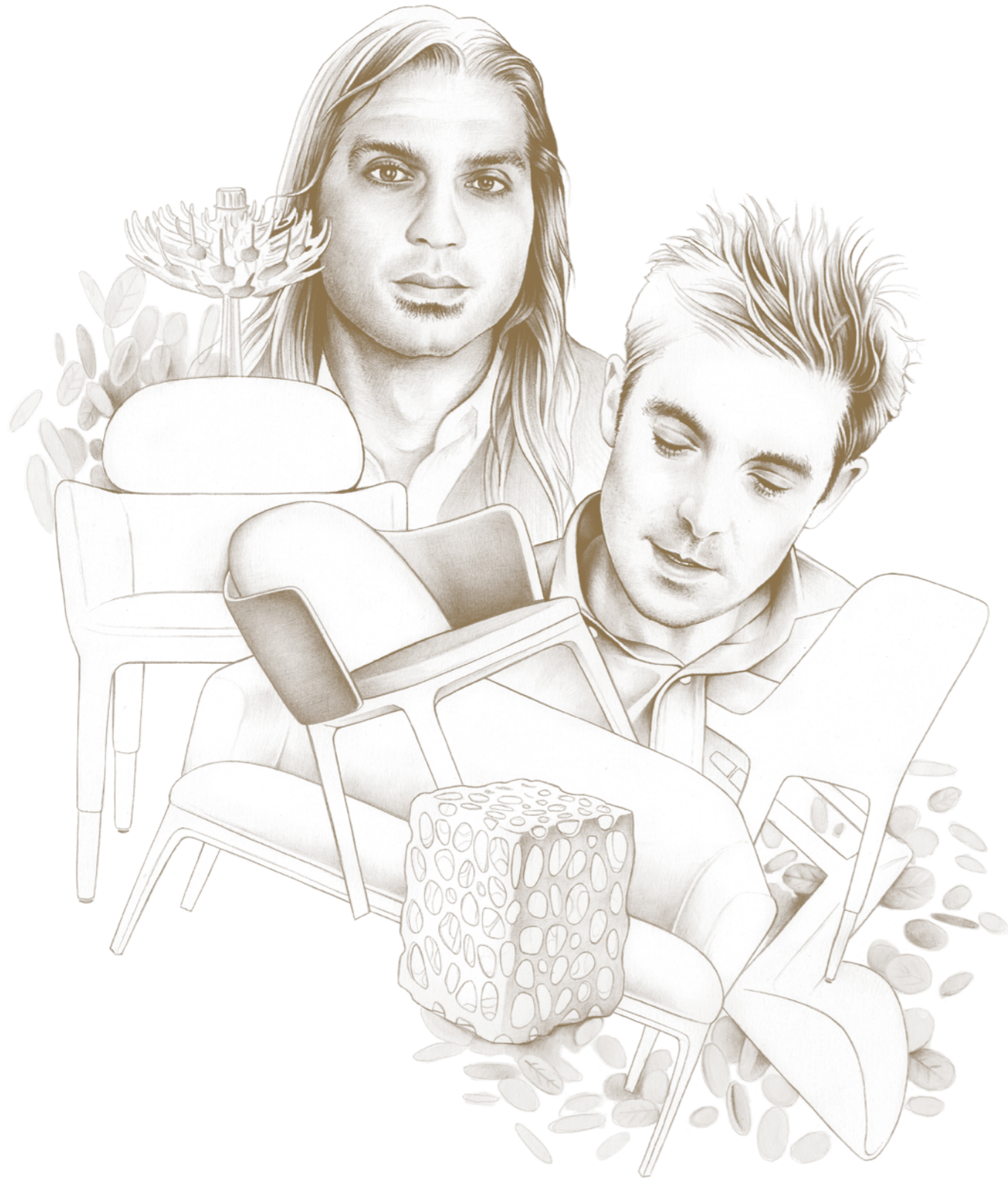


Mayfair Park Residences from Curzon Street



Private entrance to one of the townhouses on Stanhope Gate





## THE NATURE OF A PLACE

Inspired by nature and blending historical references with custom-designed features, internationally renowned design practice Jouin Manku has created sumptuous interiors that are organic, elegant and evocative.





## *A sense of arrival*

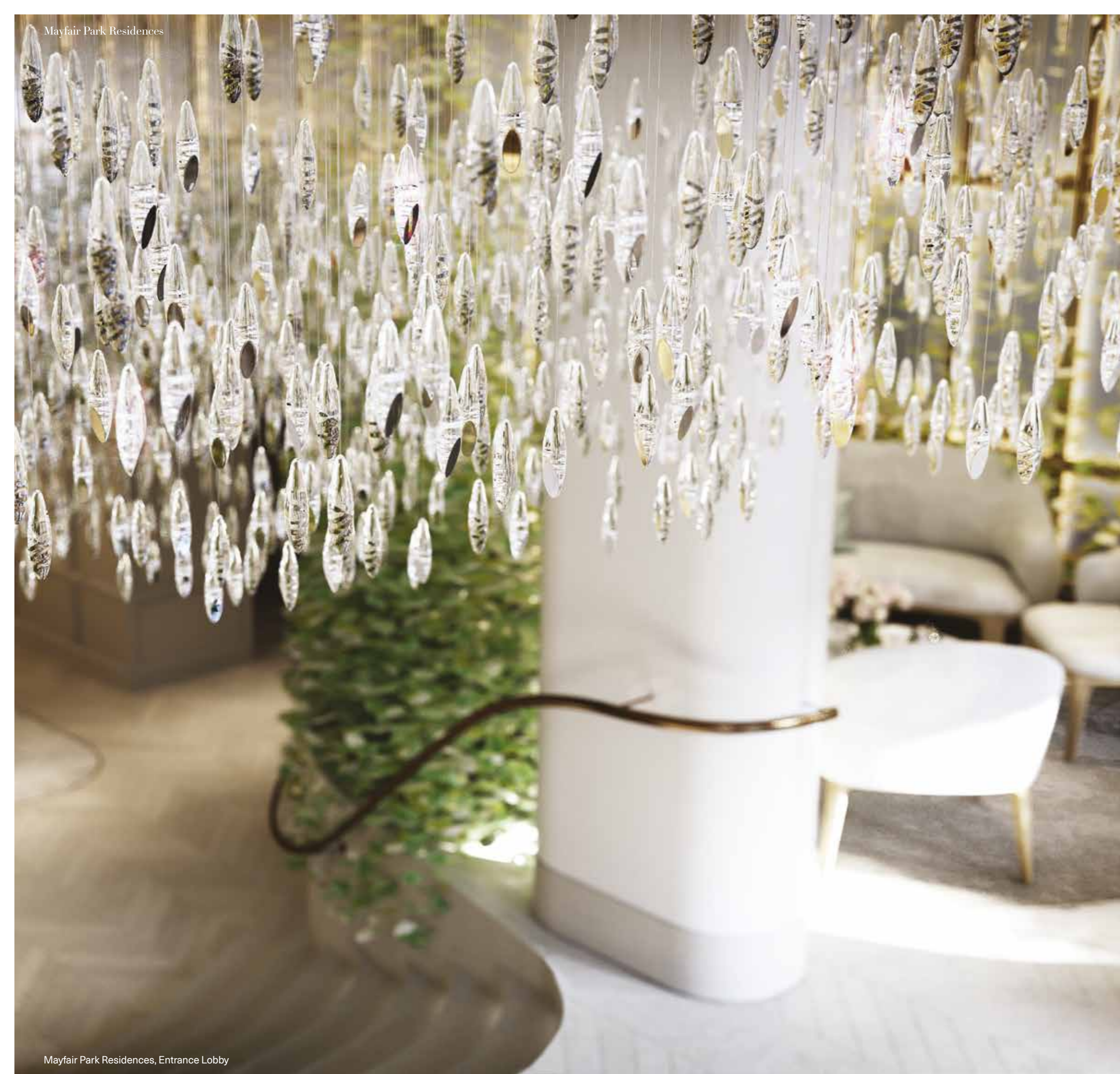
Step inside and subtle modulations of colour and atmosphere offer a refreshing contrast to the bustling London streets. From the intimate welcome area, the sense of tranquility extends up through the core of the building and into the private lobbies that create a natural pause before arriving home.



The main entrance to Mayfair Park Residences from Stanhope Gate



Mayfair Park Residences, Entrance Lobby



## *An oasis of tranquility*

For the reception area, Jouin Manku has created a bespoke chandelier which energises the entire space. Scattering light across floors of pale marble and limestone, it is flanked by two installations formed from over 1,000 hand-made porcelain leaves, in tribute to the natural beauty of Hyde Park.







## *An atmosphere of refined luxury*

The apartment interiors mix timeless craftsmanship with the finest materials, offering a contemporary take on period details such as the polished oak parquet floors and statement fire surrounds.



Mayfair Park Residences, Dining Room









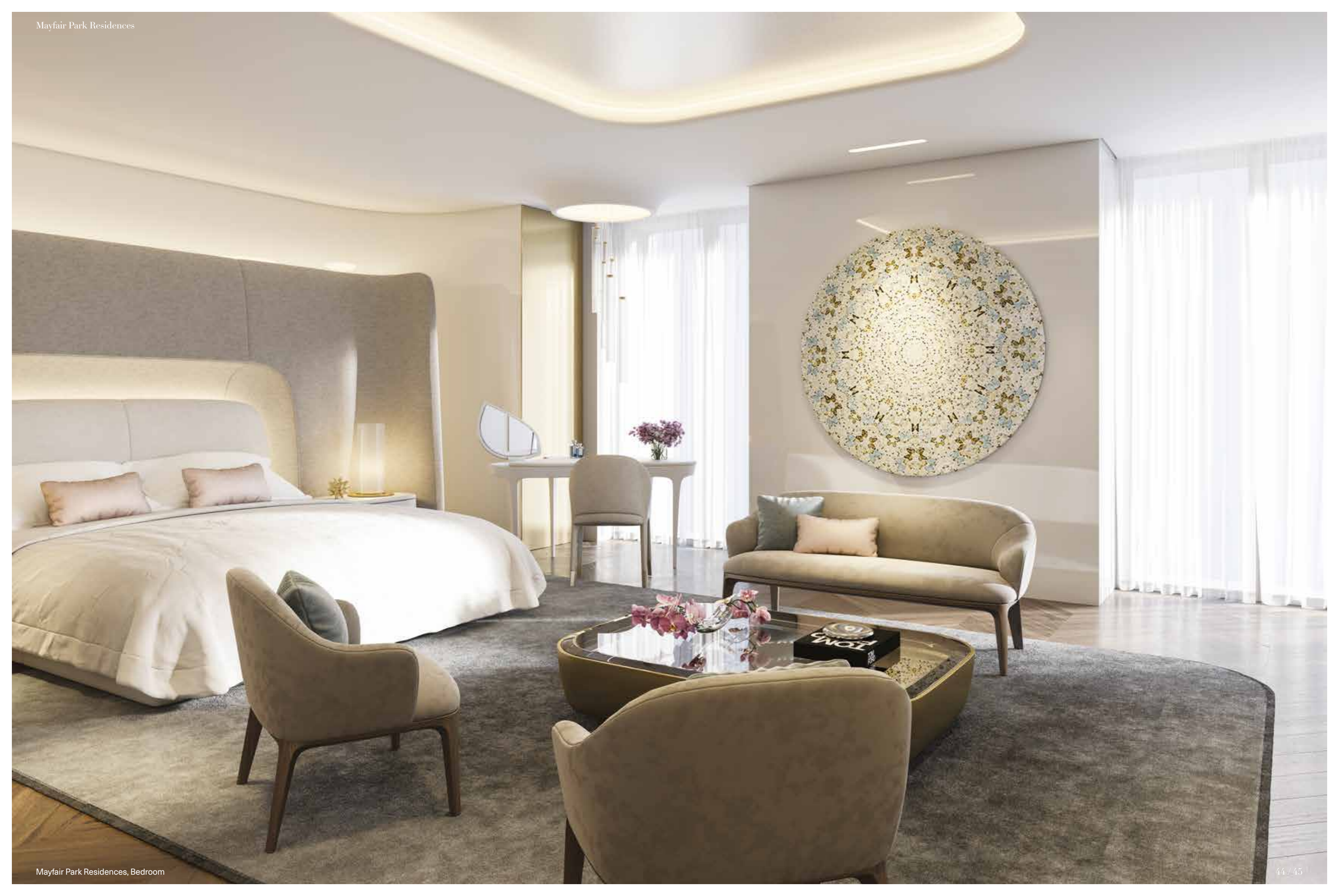
Dornbracht brassware



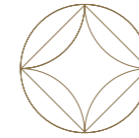
## *The epitome of glamour*

The master bathrooms feature floors laid with honed and polished marble tiles in a subtle chevron pattern, while the walls are lined with lustrous metallic mesh behind floor-to-ceiling glass. In this apartment, a marble-clad, freestanding bathtub quietly complements the marble feature wall behind the bespoke floating vanity unit.









## PERFECT SECLUSION

The on-site spa includes a state-of-the-art fitness suite, swimming pool, lounge and private treatment rooms. Residents can take advantage of a wide range of specialist health and beauty treatments, as well as personal training sessions, yoga classes and swimming lessons.



## Room to relax

The spacious and comfortable residents' lounge, wrapped around the statement open fireplace, overlooks the swimming pool area with its mirrored ceiling and decorative mosaic walls.

### In the 10,000 sq ft Health Club:

- Residents' lounge
- 2,250 sq ft state-of-the-art gym
- 20m heated swimming pool
- Separate sauna and steam rooms
- Hydrotherapy pool
- Two treatment rooms exclusive to residents
- Personal training area
- Private changing and shower rooms

