



AN EXCLUSIVE DEVELOPMENT OF
NET ZERO ENERGY HOMES

LOCATION

SENNEN, A PICTURESQUE COASTAL VILLAGE NESTLED IN THE HEART OF CORNWALL, CAPTIVATES VISITORS WITH ITS STUNNING NATURAL BEAUTY AND SERENE ATMOSPHERE. LOCATED AT THE WESTERNMOST TIP OF THE UK'S MAINLAND, SENNEN BOASTS BREATHTAKING VISTAS OF THE ATLANTIC OCEAN, SHOWCASING RUGGED CLIFFS, PRISTINE SANDY BEACHES, AND CRASHING WAVES THAT HAVE ENTICED SURFERS AND BEACHCOMBERS FOR GENERATIONS.

THE VILLAGE ITSELF IS A CHARMING FUSION OF TRADITIONAL CORNISH ARCHITECTURE AND A LAID-BACK, ARTISTIC VIBE. WHITEWASHED COTTAGES LINE THE NARROW STREETS, HOUSING COZY CAFES, QUAIN ART GALLERIES, AND LOCAL CRAFT SHOPS. SENNEN'S MARITIME HERITAGE IS EVIDENT IN ITS CHARMING HARBOUR, WHERE COLOURFUL FISHING BOATS BOB ALONGSIDE VISITING MARINERS VESSELS.

ONE OF SENNEN'S MOST ICONIC FEATURES IS THE LANDMARK KNOWN AS SENNEN COVE, A WIDE STRETCH OF GOLDEN SAND THAT ATTRACTS BOTH SUNBATHERS AND WATER SPORTS ENTHUSIASTS. THE COVE IS FAMOUS FOR ITS CONSISTENT WAVES, MAKING IT A POPULAR DESTINATION FOR SURFERS OF ALL SKILL LEVELS. THE NEARBY GWENVER BEACH, ACCESSIBLE BY A SCENIC CLIFF WALK, OFFERS A MORE SECLUDED AND RUGGED COASTLINE EXPERIENCE.

THE VILLAGE IS A GATEWAY TO SOME OF CORNWALL'S MOST BREATHTAKING NATURAL ATTRACTIONS. LAND'S END, A SHORT DISTANCE AWAY, MARKS THE DRAMATIC CONCLUSION OF THE UK'S SOUTHWESTERN COAST AND OFFERS SWEEPING PANORAMIC VIEWS FROM ITS RUGGED CLIFFS.

ADDITIONALLY, THE SOUTH WEST COAST PATH WINDS ITS WAY THROUGH SENNEN, INVITING HIKERS TO EXPLORE THE REGION'S DIVERSE LANDSCAPES, FROM COASTAL HEATHS TO HIDDEN COVES. WHETHER YOU'RE DRAWN BY THE ALLURE OF THE SEA, THE CHARM OF A COASTAL VILLAGE, OR THE EXPLORATION OF CORNWALL'S WILD BEAUTY, SENNEN STANDS AS A QUINTESSENTIAL DESTINATION THAT CAPTURES THE ESSENCE OF THIS REMARKABLE REGION.







SET WITHIN A STUNNING COASTAL LOCATION – OCEAN VIEW PROVIDES A BEAUTIFUL NET ZERO ENERGY DEVELOPMENT OF ONLY 3 HOMES, COMPRISING 2 X 3 BEDROOM SEMI-DETACHED HOMES AND 1 X 3 BEDROOM MID TERRACED PROPERTY.

STANDING ABOVE THE BAY OF THE POPULAR VILLAGE OF SENNEN ON THE WESTERN TIP OF CORNWALL, THE SITE HAS BEEN DESIGNED WITH CAREFUL CONSIDERATION FOR THE LOCAL LANDSCAPE AND ENVIRONMENT, ENSURING THAT IT BLENDS SEAMLESSLY WITH THE NATURAL SURROUNDINGS.

EACH OF THE 3 HOMES AT OCEAN VIEW IS BEING BUILT TO A VERY HIGH STANDARD, INCORPORATING MODERN FEATURES AND TECHNOLOGIES WHILE STILL RETAINING AN AESTHETIC SIMPATHEIC TO THE LOCATION. THE PROPERTIES OFFER REVERSE STYLE LIVING ACCOMMODATION TO MAXIMISE THE VIEWS AFFORDED BY THEIR LOCATION AND PROVIDE A SPECTACULAR OUTLOOK FROM THE BAY FRONTED BALCONIES ON THE FIRST FLOOR.

WHAT'S NEARBY



GWYNVER BEACH
1 MILE



MINACK THEATRE
4 MILES



LANDS END
2 MILES



GEEVOR MINE
6 MILES



ST MICHAELS MOUNT
12 MILES



TRURO
CITY



POLGOON
VINEYARD

SITE LAYOUT



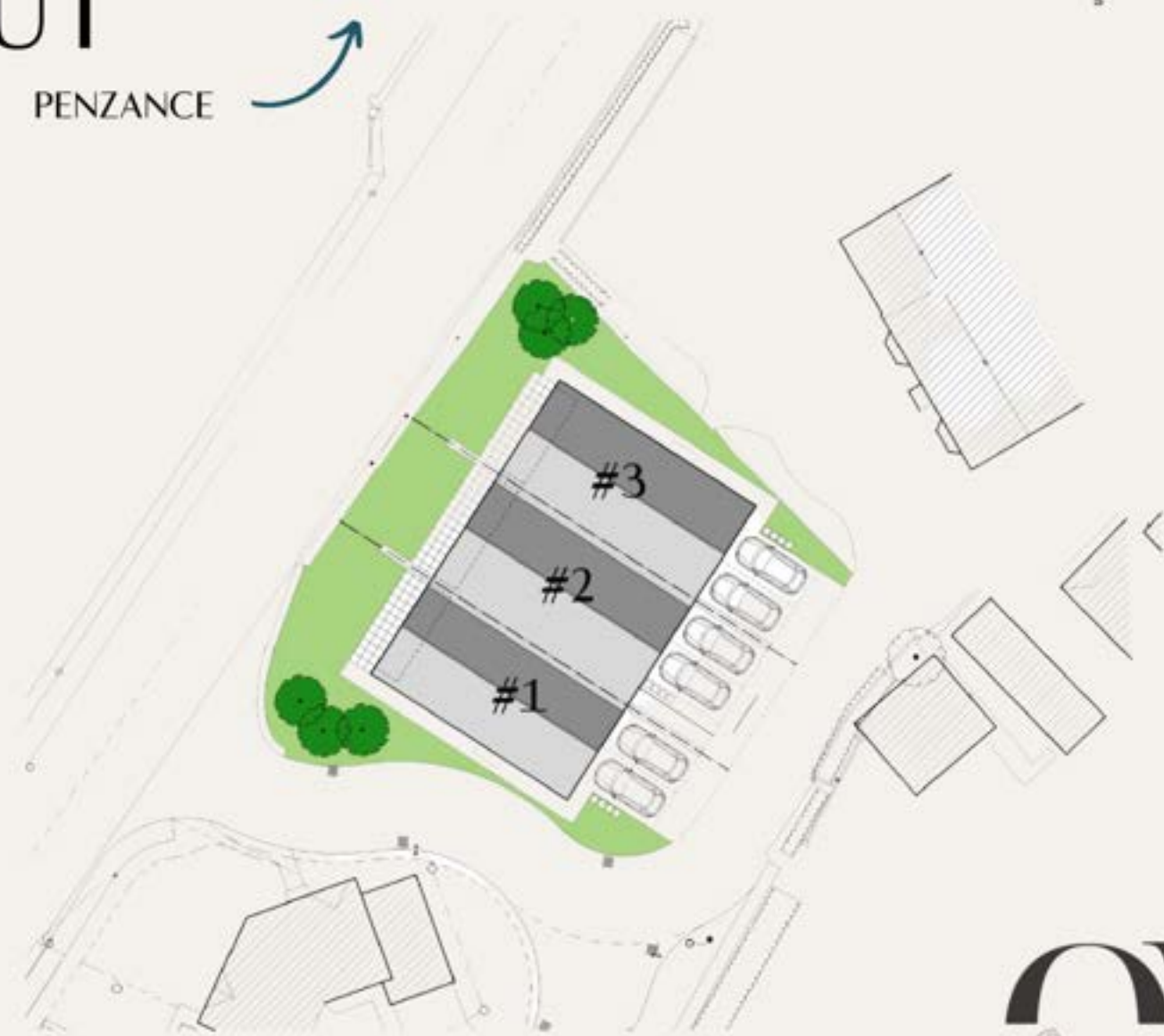
PENZANCE



BEACHES



LAND'S END



PLOT 1

130 SQM (1400 SQFT) APPROX



GROUND FLOOR
65 SQM (699.65 SQFT)
APPROX

FIRST FLOOR
65 SQM (699.65 SQFT)
APPROX

PLOT 2

150 SQM (1614 SQFT) APPROX

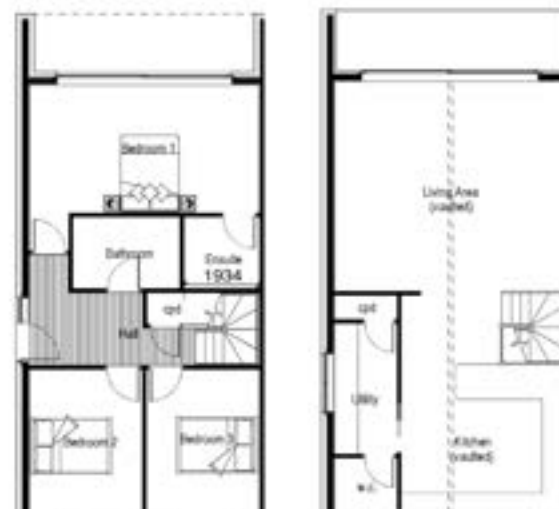


GROUND FLOOR
75 SQM (807.29 SQFT)
APPROX

FIRST FLOOR
75 SQM (807.29 SQFT)
APPROX

PLOT 3

130 SQM (1400 SQFT) APPROX



GROUND FLOOR
65 SQM (699.65 SQFT)
APPROX

FIRST FLOOR
65 SQM (699.65 SQFT)
APPROX

Living beyond zero.

















SPECIFICATION



EXTERNALLY

- BALCONY WITH GLASS BALUSTRADE
- TURFED GARDENS WITH BOUNDARY FENCING
- RESIN BONDED SURFACE PARKING BAYS
- ELECTRIC CAR CHARGING POINT



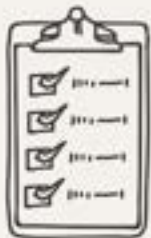
KITCHEN

- HIGH END GERMANIC RANGE UNITS
- MEILE RANGE OF APPLIANCES
- LUXURIOUS FIXTURES & FITTINGS
- ENGINEERED OAK FLOORING



BATHROOMS & ENSUITES

- CONTEMPORARY SANITARYWARE
- CROSSWATER CHROME FITTED TAPS
- CHROME HEATED TOWEL RAIL
- HEATED DE-MIST BATHROOM MIRRORS
- WALL TILING WHERE NECESSARY IN BATHROOMS



GENERAL

- WONDROWALL INTELLIGENT HOMES MANAGEMENT SYSTEM
- PV WITH BATTERY STORAGE
- INFRARED HEATING SYSTEM
- HOT WATER VIA SUNAMP THERMAL STORE
- SHAKER STYLE SOLID WOOD INTERNAL DOORS





what3words

///nicer.rang.nasal

POSTCODE

TR19 7AR

TRAVELLING FROM PENZANCE, PROCEED WESTWARDS
TOWARDS LAND'S END ON THE A30. AFTER ABOUT
SEVEN MILES THE VILLAGE OF SENNEN WILL BE
REACHED.

SELLING AGENTS



THE ESTATES DIVISION

AT NEST SEEKER INTERNATIONAL

MC@NESTSEEKERS.COM

07989 050429