



JH
HEATHERVILLE

A beautiful Cotswold home on
the outskirts of Stroud



Welcome

A luxuriously appointed and substantial family home,
with extensive views over the Cotswold valleys.

Individually designed,
this wonderful house
offers extensive
accommodation
and amenities.

Occupying an enviable location on the periphery of the ever popular village of Randwick, this beautiful five-bed property stands within its own attractive, landscaped gardens approaching half an acre.

It enjoys a superb south-westerly aspect with open countryside to the rear and offers luxury country living, allied to every modern convenience.

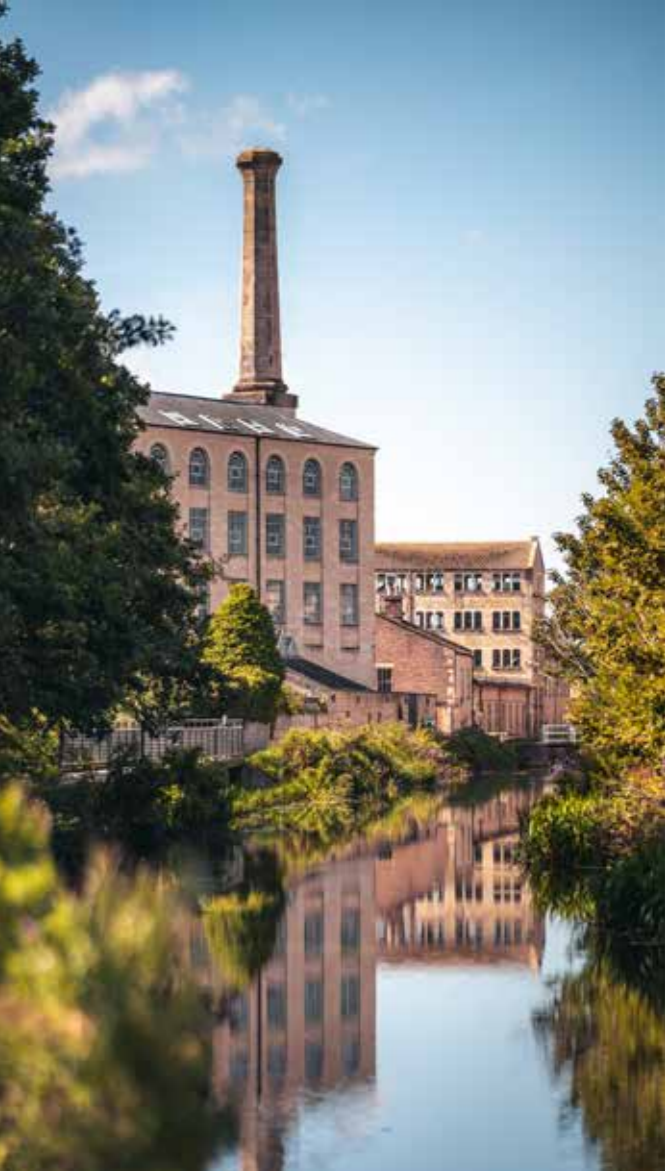


A Vibrant Local Culture

The Stroud area boasts a rich history. Long associated with the cotton industry, the area's past can still be seen in many of the converted mills and industrial buildings along the banks of the Stroud canal. The town boasts an eclectic mix of independent shops, cafes and galleries and with many excellent restaurants and pubs you are never short of somewhere to enjoy good food and drink.

Close to Randwick and Stroud are numerous delightful Cotswold villages and slightly further afield, but still within easy reach, are the famous towns of Cheltenham and Cirencester.





Fantastic Location

The picturesque village of Randwick is ideally situated, less than 10 minutes from the centre of Stroud by car. There are excellent transport links within easy reach. The M5 is only 5 miles distant and rail connections from Stroud offer fast links direct to London Paddington. Voted one of the best places to live in the UK in 2023, Stroud offers a wealth of cultural highlights, shopping and entertainment amenities. Its famous farmer's market has consistently been voted the best in the country and takes place every Saturday. Families can benefit from the excellent schooling in the area, with a range of private fee paying and high-quality state schools available for children of all ages.



Key Features:

Interior:

5 Bedrooms, 2 Ensuite
Family Bathroom
Large Open Plan Kitchen/Dining Room
Spacious Living Room
Family Room
Study
Home Office

Exterior:

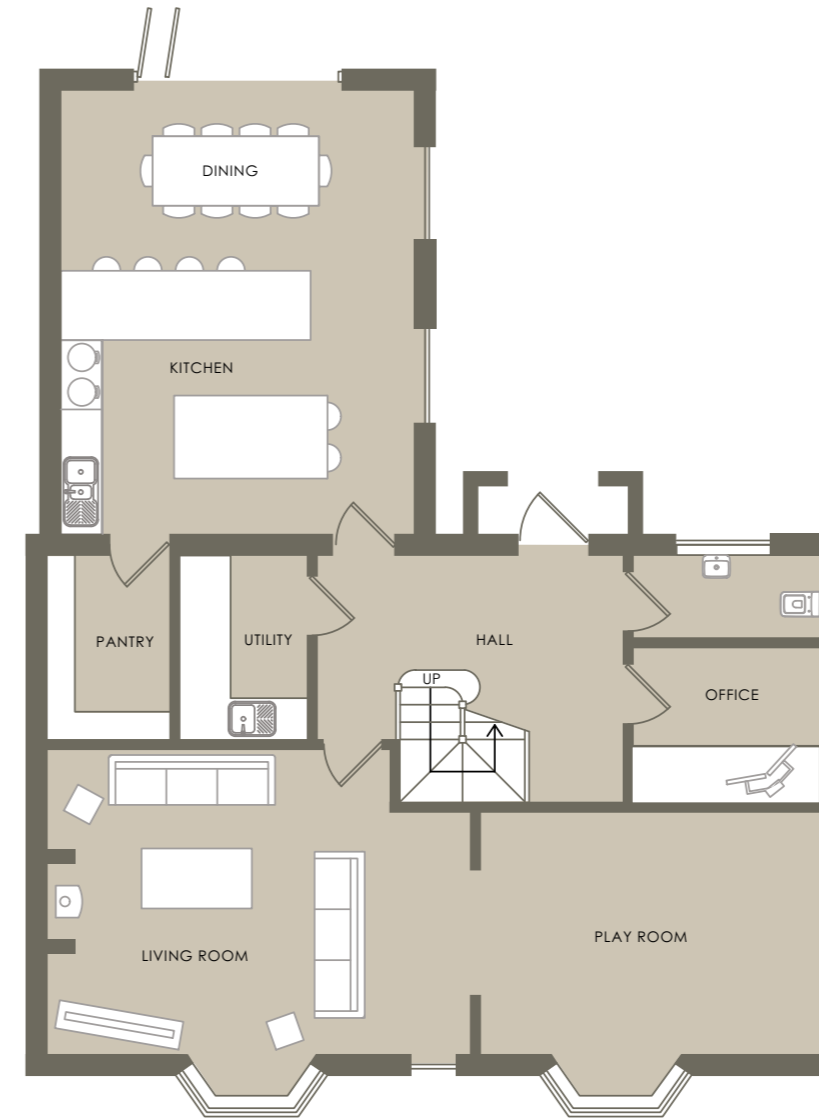
Tiered, Landscaped Garden
Garden Room / Home Office
Heated Swimming Pool
Stunning Views Overlooking Randwick
and the Stroud Valleys

Garage:

Double Garage with a One-Bedroom
Annexe Above

Garden Room/ Home Office:

Heated and Insulated
WiFi Ready

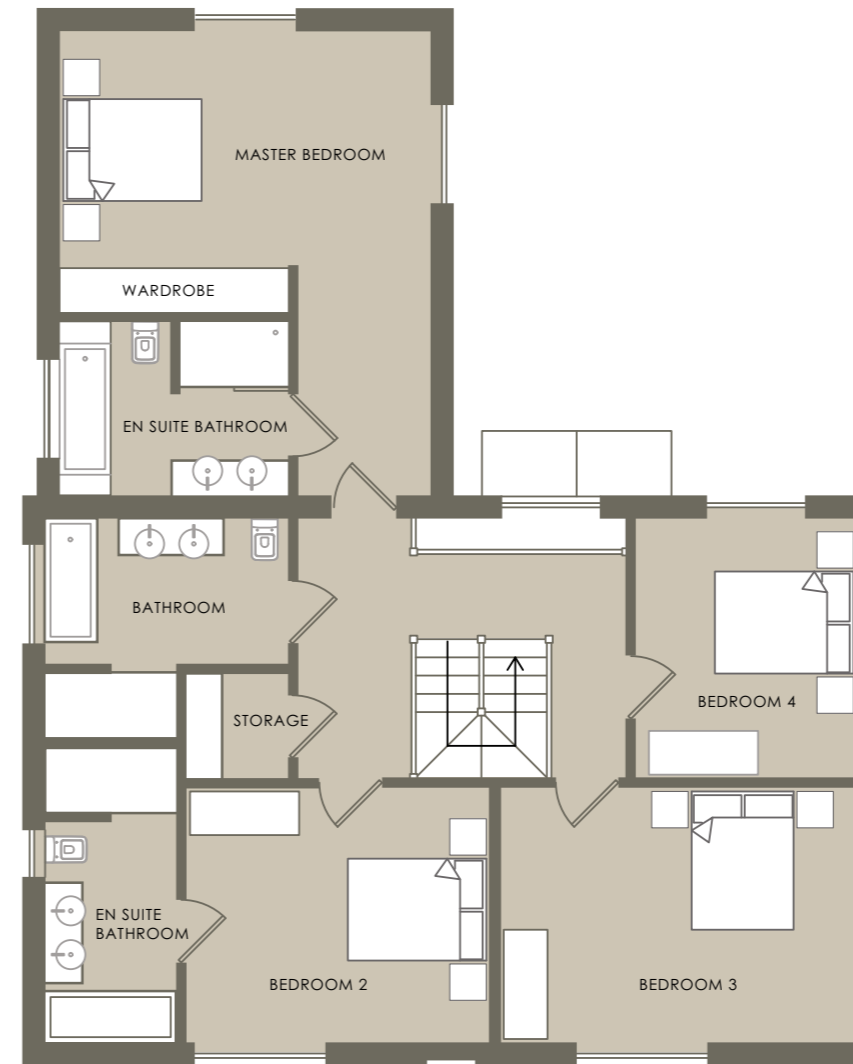


GROUND FLOOR PLAN

1:100 @ A1

Room dimensions are measured to structural walls and overall sizes are approximate only. Kitchen layout shown here are indicative only. Floor plans shown are not to scale and dimensions should not be relied upon for flooring or furniture. Please consult the sales agent for more information.



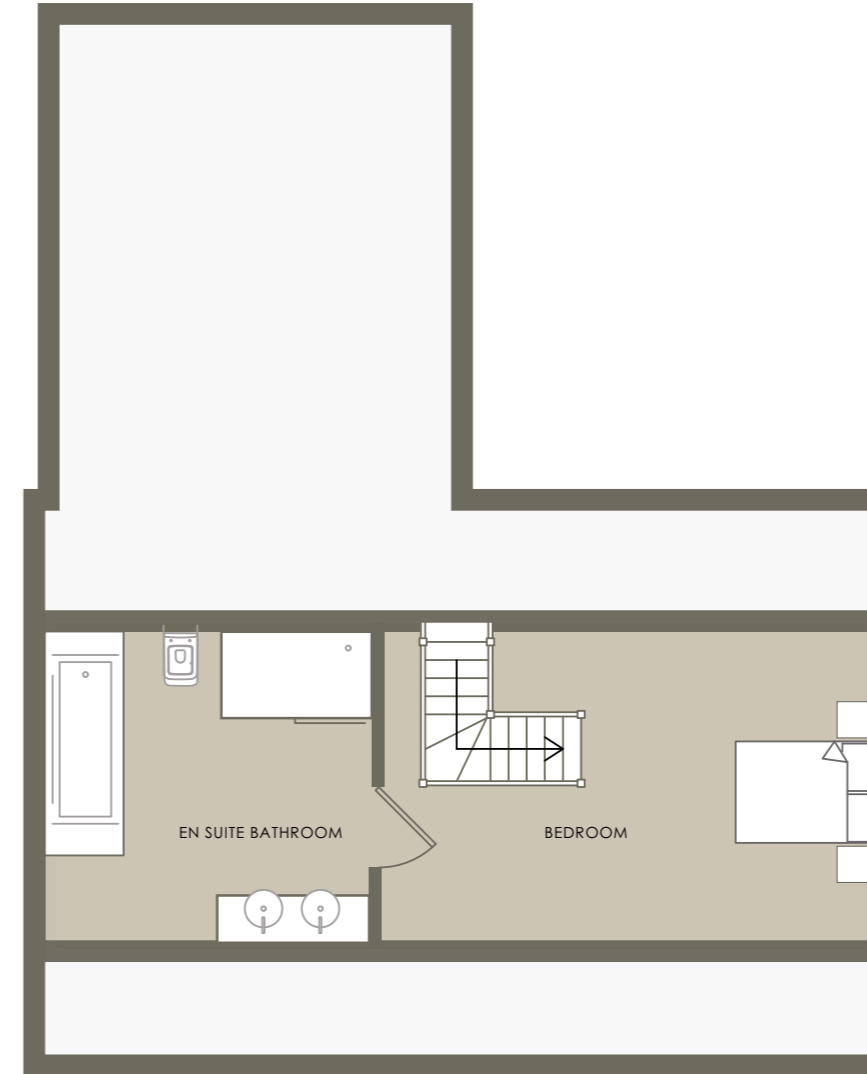


FIRST FLOOR PLAN

1:100 @ A1

Room dimensions are measured to structural walls and overall sizes are approximate only. Kitchen layout shown here are indicative only. Floor plans shown are not to scale and dimensions should not be relied upon for flooring or furniture. Please consult the sales agent for more information.





SECOND FLOOR PLAN

1:100 @ A1

Disclaimer: Room dimensions are measured to structural walls and overall sizes are approximate only. Kitchen layouts shown here are indicative only. Floor plans shown are not to scale and dimensions should not be relied upon for flooring or furniture. Please consult the sales agent for more information.

Room dimensions are measured to structural walls and overall sizes are approximate only. Kitchen layout shown here are indicative only. Floor plans shown are not to scale and dimensions should not be relied upon for flooring or furniture. Please consult the sales agent for more information.



A Walker's Paradise

If the outdoors is your thing, then this house is perfectly situated. You can step out of your home and within minutes you will be on the Cotswold Way - an Area of Outstanding Natural Beauty. Whether you want a leisurely stroll or something more vigorous, the local area offers much for you to explore.



The Finest Quality Accommodation & Exterior

If you want luxury accommodation and facilities for you and your family, then an early viewing of the property is recommended. Spacious interior rooms downstairs are complemented by generous bedrooms and high-quality bathroom facilities. The open plan kitchen/diner offers flexibility and is a wonderful family and entertaining space. Other rooms offer you more opportunity to create individual and beautiful spaces.

Externally, the house boasts a magnificent heated pool and garden room, from which you can enjoy the extensive views the property offers across the Cotswold valleys.

This is a luxury property, in a fantastic location, that deserves to be seen to fully appreciate everything it has to offer.



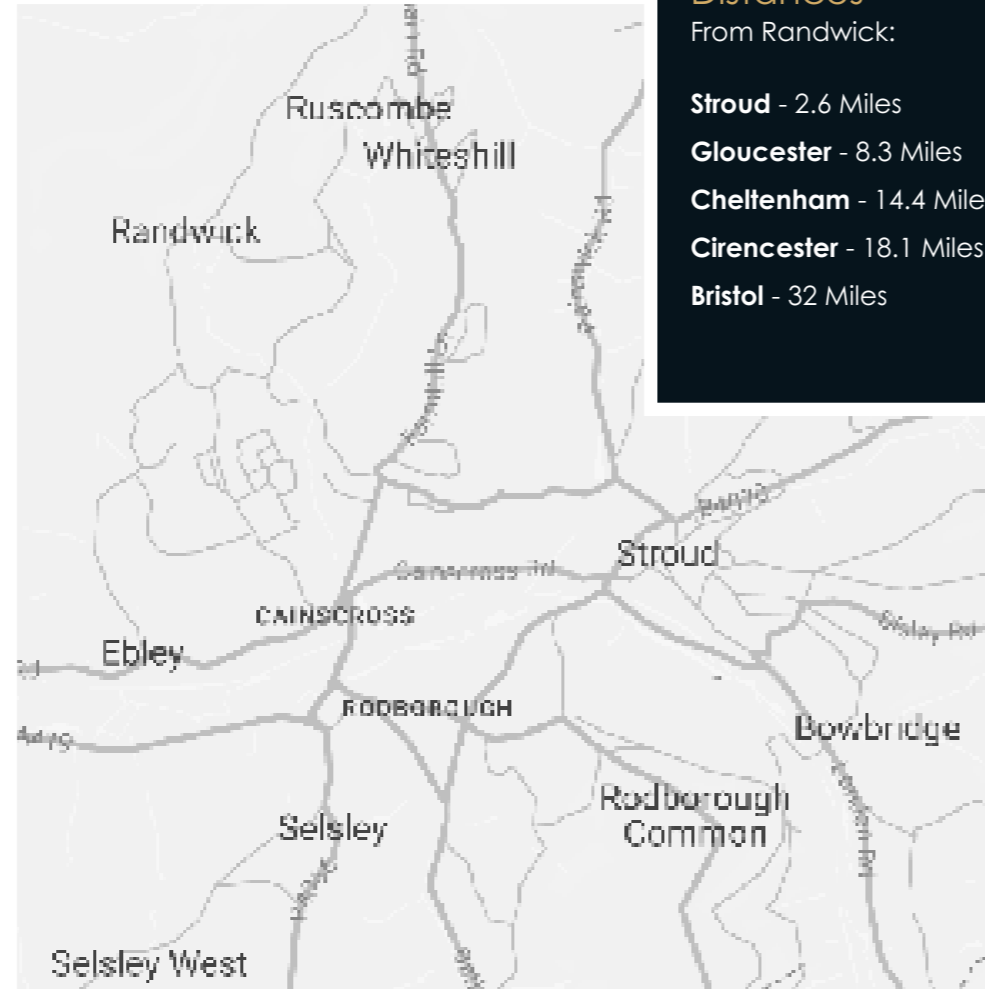
HE
HEATHERVILLE

Location & Connections

The picturesque village of Randwick is ideally situated, less than 10 minutes from the centre of Stroud by car. There are excellent transport links within easy reach.

The M5 is only 5 miles distant and rail connections from Stroud offer fast links direct to London Paddington.

The regular direct train service to London Paddington takes around 1 Hour 30 Minutes and is frequent throughout the day.



Distances

From Randwick:

Stroud - 2.6 Miles

Gloucester - 8.3 Miles

Cheltenham - 14.4 Miles

Cirencester - 18.1 Miles

Bristol - 32 Miles





Move Estate Agents & Lettings (Cheltenham Office)

1 Clarence Parade, Cheltenham, Gloucestershire, GL50 3NY

t: 01242 257 333 **e:** enquiries@move.uk.net **w:** www.move.uk.net

Please Note: The information within this brochure is for guidance only and the company reserves the right to alter the specification as necessary and without prior notice. Although every care has been taken to ensure that this information is correct, contents do not constitute a contract, part of a contract or warranty. Any floor plans shown are not to scale and dimensions should not be relied upon for flooring or furniture. Printed March 2023. Design: www.linesgroup.co.uk