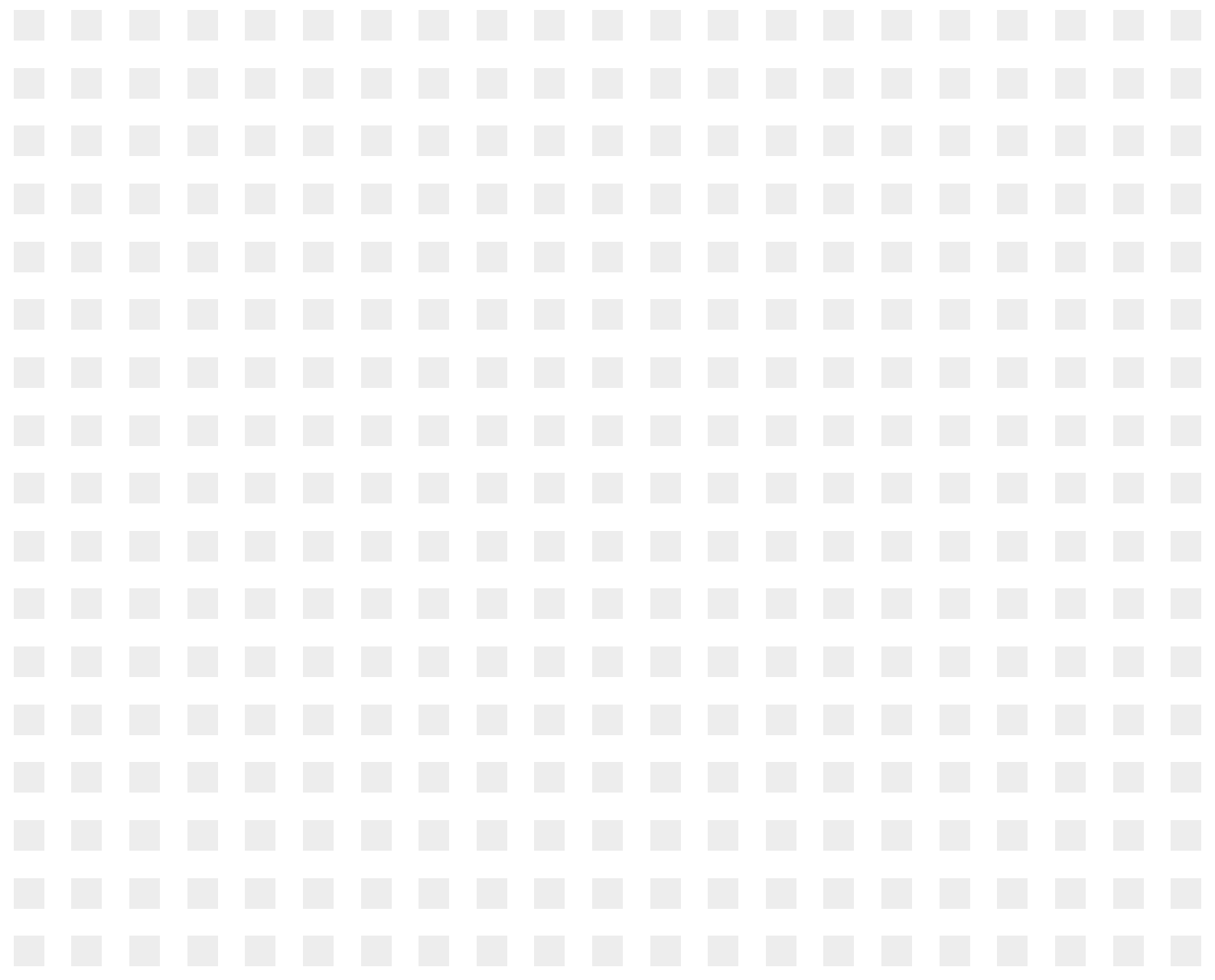


# TWENTY

CHAPEL STREET • LIVERPOOL



# THE STAND OUT BUILDING IN LIVERPOOL



---

The Grade A office building comprising of 155,000 sq ft with an established occupier mix including Ernst & Young, Orega, Police Mutual, Mason Owen, Barclays and Liverpool Football Club. The contemporary design and large areas of uninterrupted glazing offer stunning views of the River Mersey and Liverpool's distinctive skyline.



# OUR VISION

---

The comprehensively redesigned reception featuring a brand new café facility, provides a breakout area for tenants to meet informally during a busy day. We believe this modern co-working space matches the needs of our tenants in an ever-changing environment.



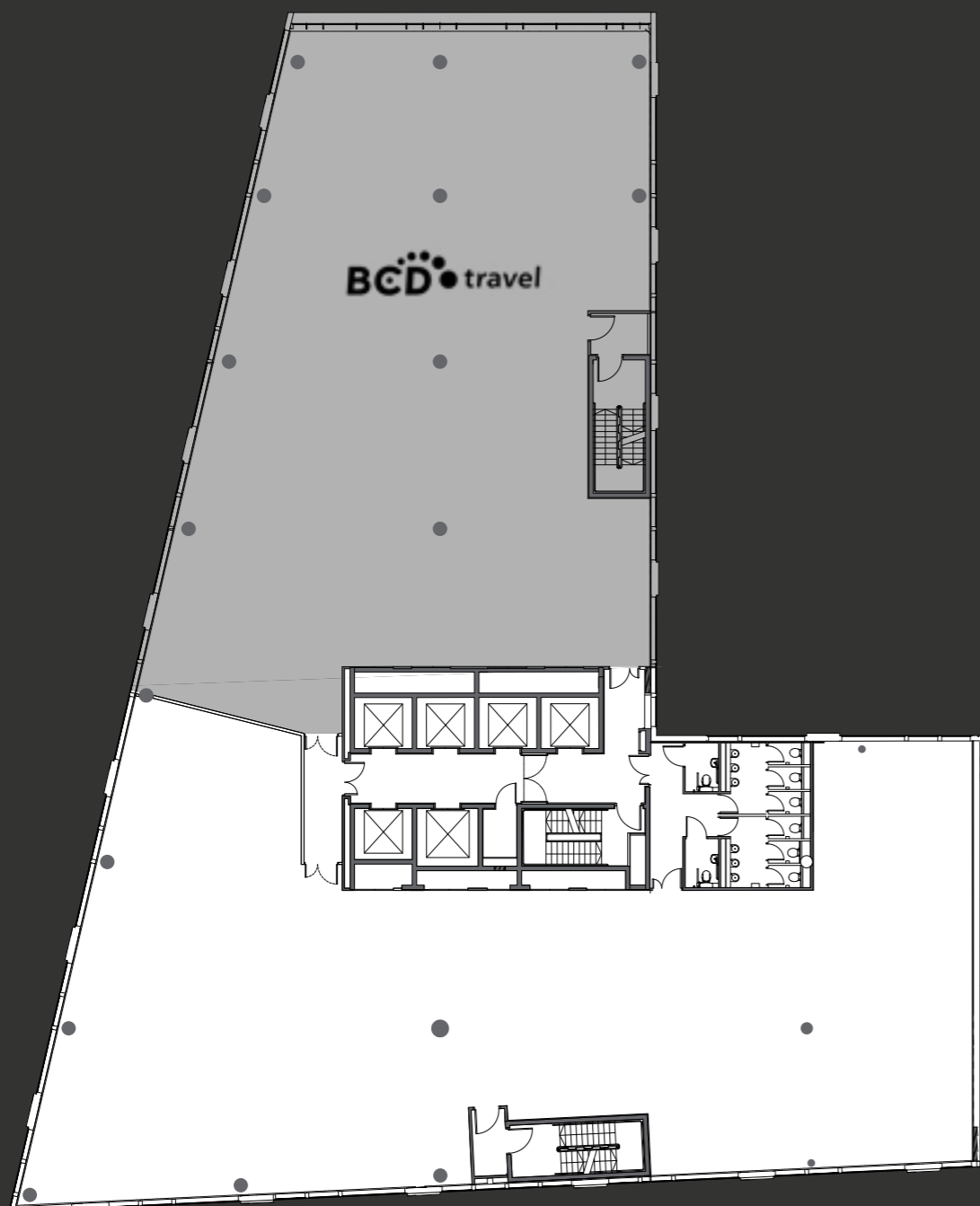
# YOUR SPACE

---

With an EPC rating B, Twenty Chapel Street provides Grade A office space with spectacular views of The River Mersey. The large floor plates offer a flexible and efficient working environment and recent refurbishment to the common areas has further increased the quality offering.

Twenty Chapel Street is a Metronet UK enabled building providing super high-speed broadband services. Our delivery of high-speed, always-on, uncontested connectivity (10Mbps - 2Gbps) allows tenants to scale their internet and phone requirements according to their specific needs.

# FLOOR PLATES



**PART SIXTH FLOOR**  
7,294 SQ FT

Floor	Tenant / Availability	sq ft	sq m
Fifteenth	Ernst & Young		
Fourteenth	RSM		
Thirteenth	The Lead Agency		
Twelfth	CEL Solicitors		
Eleventh	Barclays (Wealth & Corporate)		
Tenth	Liverpool Football Club		
Ninth	Liverpool Football Club		
Eighth	Liverpool Football Club		
Seventh (part)	Mason Owen Financial Services		
Seventh (part)	Mason Owen Property		
<b>Sixth (part)</b>	<b>TO LET</b>	<b>7,294</b>	<b>677.6</b>
Sixth (part)	BCD Travel		
Fifth	Police Mutual		
Fourth	Park Group		
Third	Park Group		
Second	Orega Business Centre		
First (part)	Orega Business Centre Reception		
First (part)	Broadstone Financial Solutions		
Ground (part) Retail	Nisbets		
Ground (part) Retail	Bean Coffee		

# IN GOOD COMPANY



### SPACE PLAN

6TH FLOOR | 7,294 SQ FT

- 54 work stations
- 1 x 6 person meeting room
- Tea room & cafeteria
- 1 x 8 person meeting room
- 4 x print areas
- 1 x 12 person meeting room



### SPACE PLAN

6TH FLOOR | 3,805 SQ FT

- 22 work stations
- 1 x 8 person meeting room
- Tea room & cafeteria
- 1 x 12 person meeting room
- 2 x print areas



- 4 pipe fan coiled air conditioning system
- Super fast broadband (1GB of connectivity available)
- Perforated steel suspended ceiling with LG7 lighting
- Stunning river views
- Steel encapsulated raised floors

- 6 x 12 person high speed passenger lifts
- Shower and changing facilities
- Remodelled double height reception with new integrated coffee facility
- EPC rating B
- Basement car parking



# A SHORT WALK

Liverpool has a wide range of amenities and leisure facilities a short walk from Twenty Chapel Street. The impressive array of shops, bars and restaurants cater for all occasions as the lively business district continues to grow.





# ON OFFER LIVERPOOL



### TRAVEL

- 1. Liverpool Pier Head Ferry Terminal
- 2. Cruise Liner Terminal
- 3. James Street Rail Station
- 4. Moorfields Rail Station



### HOTELS

- 5. Mercure Hotel
- 6. Crowne Plaza Hotel
- 7. Malmaison Hotel
- 8. Travelodge
- 9. Radisson Blu Hotel



### RESTAURANTS

- 10. Restaurant Bar & Grill
- 11. Fazenda Rodizio Grill
- 12. Gino D'Acampo
- 13. San Carlo
- 14. Marco Pierre White



### BARS & CAFÉS

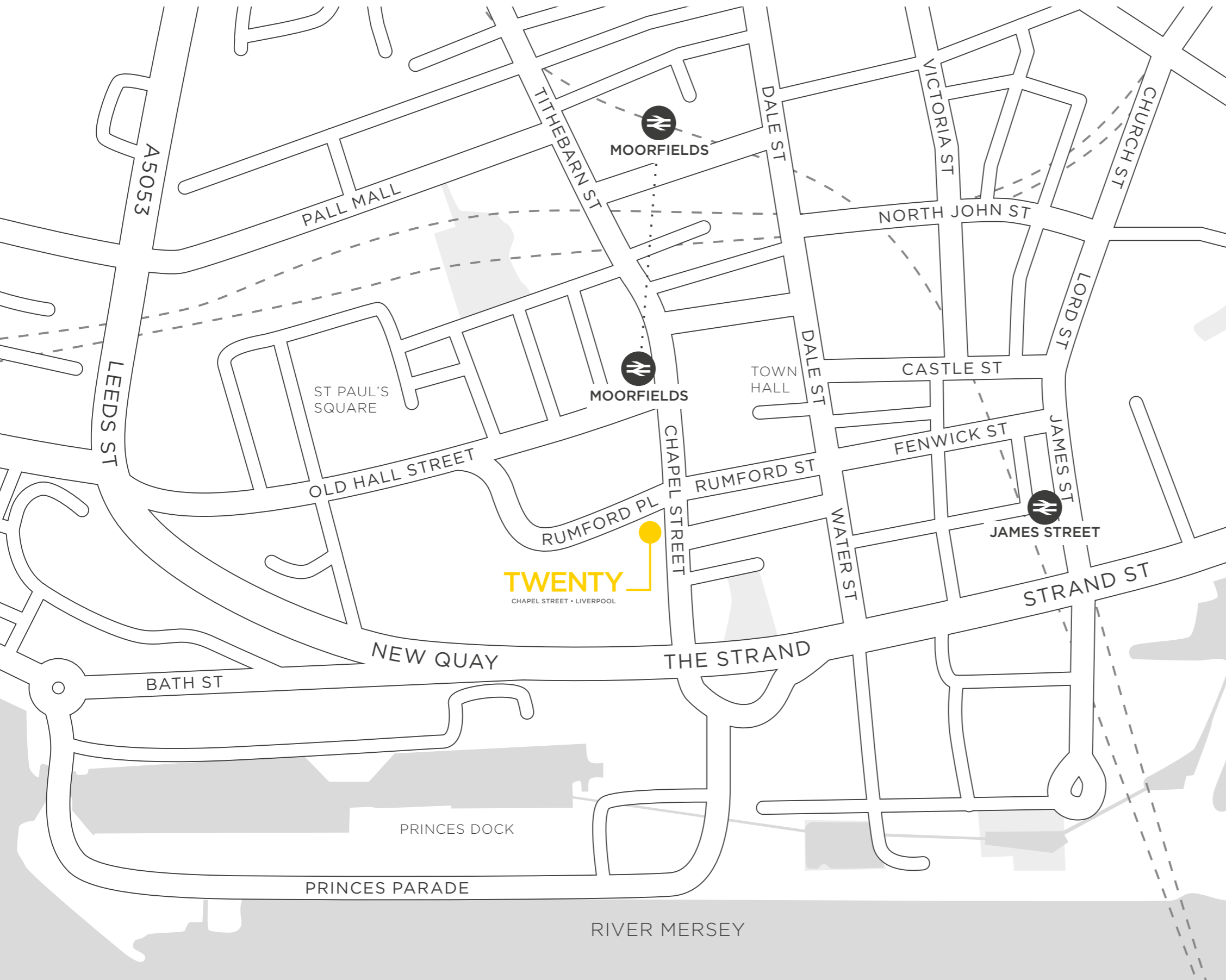
- 15. Costa
- 16. Starbucks
- 17. Pret A Manger
- 18. Philpotts
- 19. The Vincent Café and Cocktail Bar



### LEISURE

- 20. Museum of Liverpool
- 21. Debenhams
- 22. JD Gym

# TRAVEL TIMES



**TWENTY**  
CHAPEL STREET • LIVERPOOL

Chapel Street is an arterial route from The Strand and Pier Head through the Commercial District. It provides direct access to both Queensway and Kingsway Mersey Tunnels and Liverpool Lime Street mainline station.

**SAT NAV: L3 9AG**

Station	Travel Time
Manchester	35 mins
Chester	45 mins
Southport	45 mins
Leeds	1 hr 45 mins
London Euston	2 hrs

**WWW.TWENTYCHAPELSTREET.CO.UK**

**FURTHER INFORMATION**

For further information or to arrange a viewing please contact the sole leasing agents



**Andrew Owen**  
**T** 0151 230 1130 **M** 07798 576 789  
andrew@worthingtonowen.com

**Mark Worthington**  
**T** 0151 230 1130 **M** 07713 884 784  
mark@worthingtonowen.com



**Neil Kirkham**  
**T** 0151 471 4933 **M** 07584 300 859  
neil.kirkham@cbre.com

**Andrew Byrne**  
**T** 0151 471 4915 **M** 07823 520 540  
andrew.byrne@cbre.com