



Chiswick High Road, W4

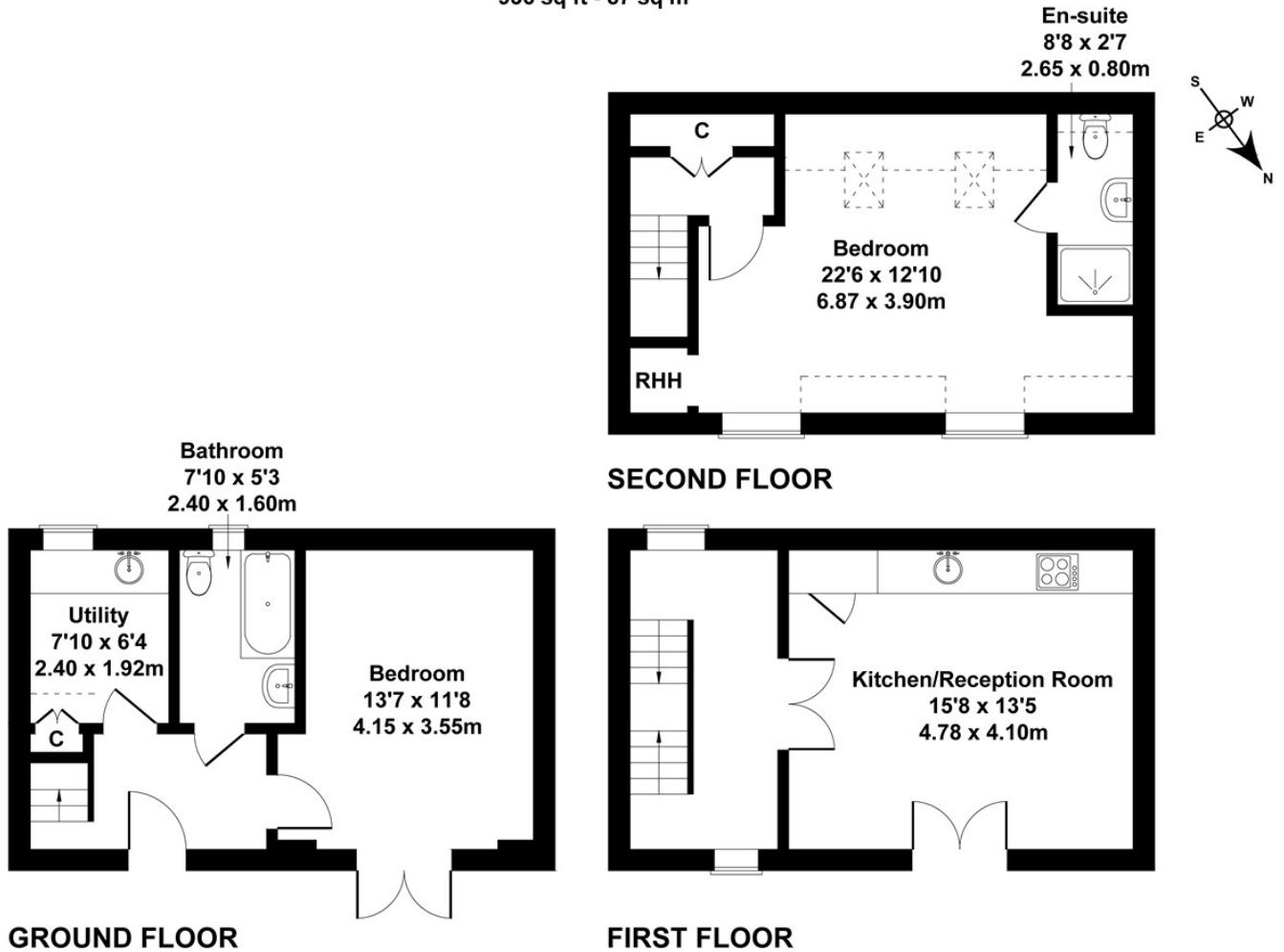
LONG LET. Modern, bright and spacious, this secluded two bedroom mews townhouse benefits from a central location moments from Gunnersbury and Chiswick park station with Overground and Underground links into London.

- SET OVER THREE FLOORS
- MODERN DEVELOPMENT
- TWO BATHROOMS
- IDEAL LOCATION
- OPEN PLAN KITCHEN
- UTILITY ROOM

£2,450 PCM

Chiswick High Rd

Approximate Gross Internal Area
936 sq ft - 87 sq m



Not to Scale. Produced by The Plan Portal 2023
For Illustrative Purposes Only.

Energy Efficiency Rating		
	Current	Potential
Very energy efficient - lower running costs		
(92 plus) A		
(81-91) B		
(69-80) C		
(55-68) D		
(39-54) E		
(21-38) F		
(1-20) G		
Not energy efficient - higher running costs		
England & Wales	EU Directive 2002/91/EC	