



Spooners Mews, W3

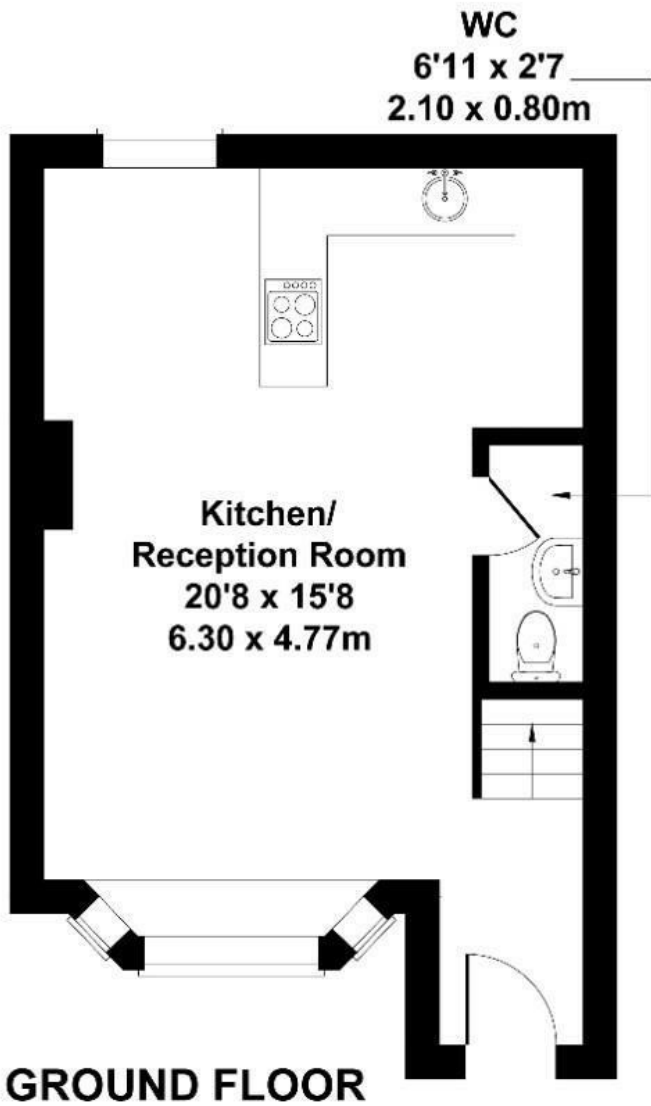
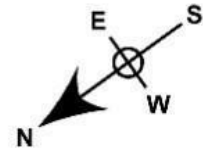
LONG LET: this two-bedroom mews house is situated in a secure, gated development just off Churchfield Road.

- Two bedrooms
- Open plan living
- Off street parking
- Gated development
- Close to amenities
- Close to transport links

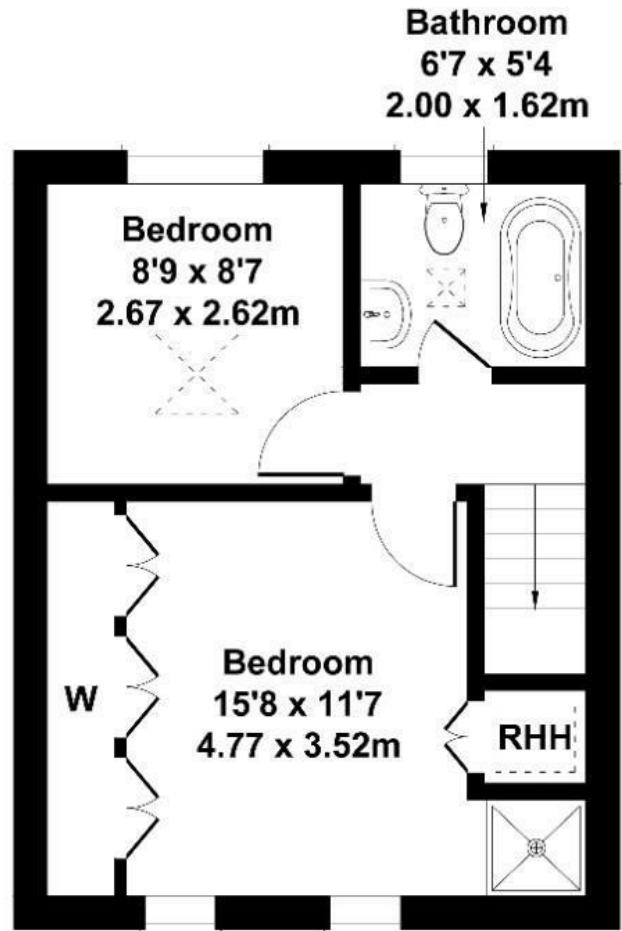
£2,400

Spooners Mews

Approximate Gross Internal Area
667 sq ft - 62 sq m



GROUND FLOOR



FIRST FLOOR

Not to Scale. Produced by The Plan Portal 2021
For Illustrative Purposes Only.

Energy Efficiency Rating		
	Current	Potential
Very energy efficient - lower running costs		
(92 plus) A		
(81-91) B		
(69-80) C		
(55-68) D	65	
(39-54) E		
(21-38) F		
(1-20) G		
Not energy efficient - higher running costs		
England & Wales	EU Directive 2002/91/EC	