

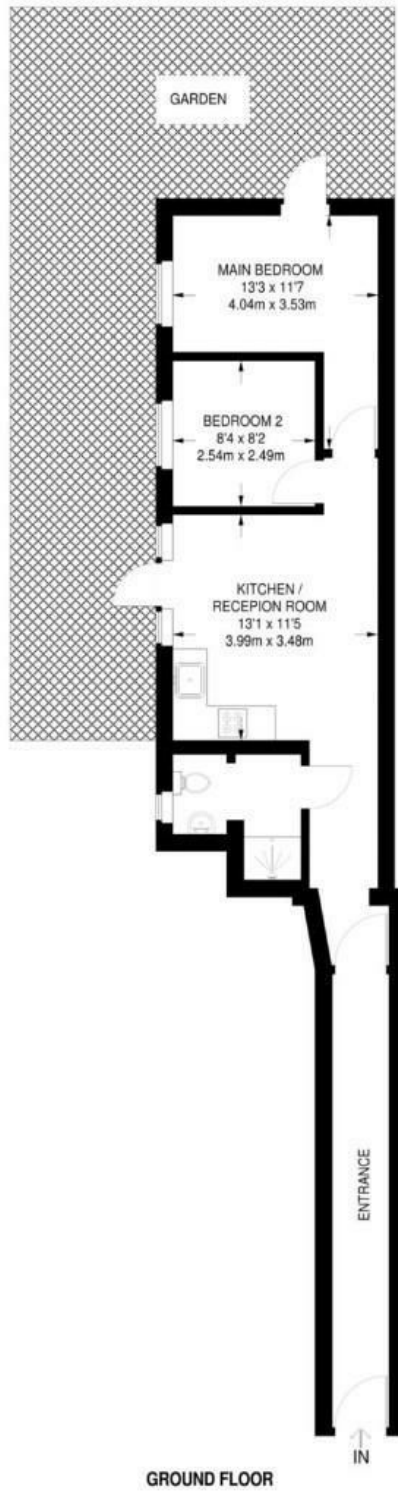


Horn Lane, W3

LONG LET. This well presented two bedroom flat boasts spacious rooms well located close to transport links and local amenities.

- TWO DOUBLE BEDROOMS
- MODERN INTERIOR
- STYLISH BATHROOM
- GREAT LOCATION
- OPEN PLAN KITCHEN
- CLOSE TO LOCAL TRANSPORT

£2,100 PCM



Energy Efficiency Rating		Current	Potential
<i>Very energy efficient - lower running costs</i>			
(92 plus) A			
(81-91) B			
(69-80) C			
(55-68) D			
(39-54) E			
(21-38) F			
(1-20) G			
<i>Not energy efficient - higher running costs</i>			
England & Wales	EU Directive 2002/91/EC		