



Messaline Avenue, W3

A stunning three-bedroom semi-detached house with off-street parking just a short walk from Acton Main Line station (Elizabeth Line) situated on the very popular residential road, Messaline Avenue.

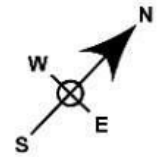
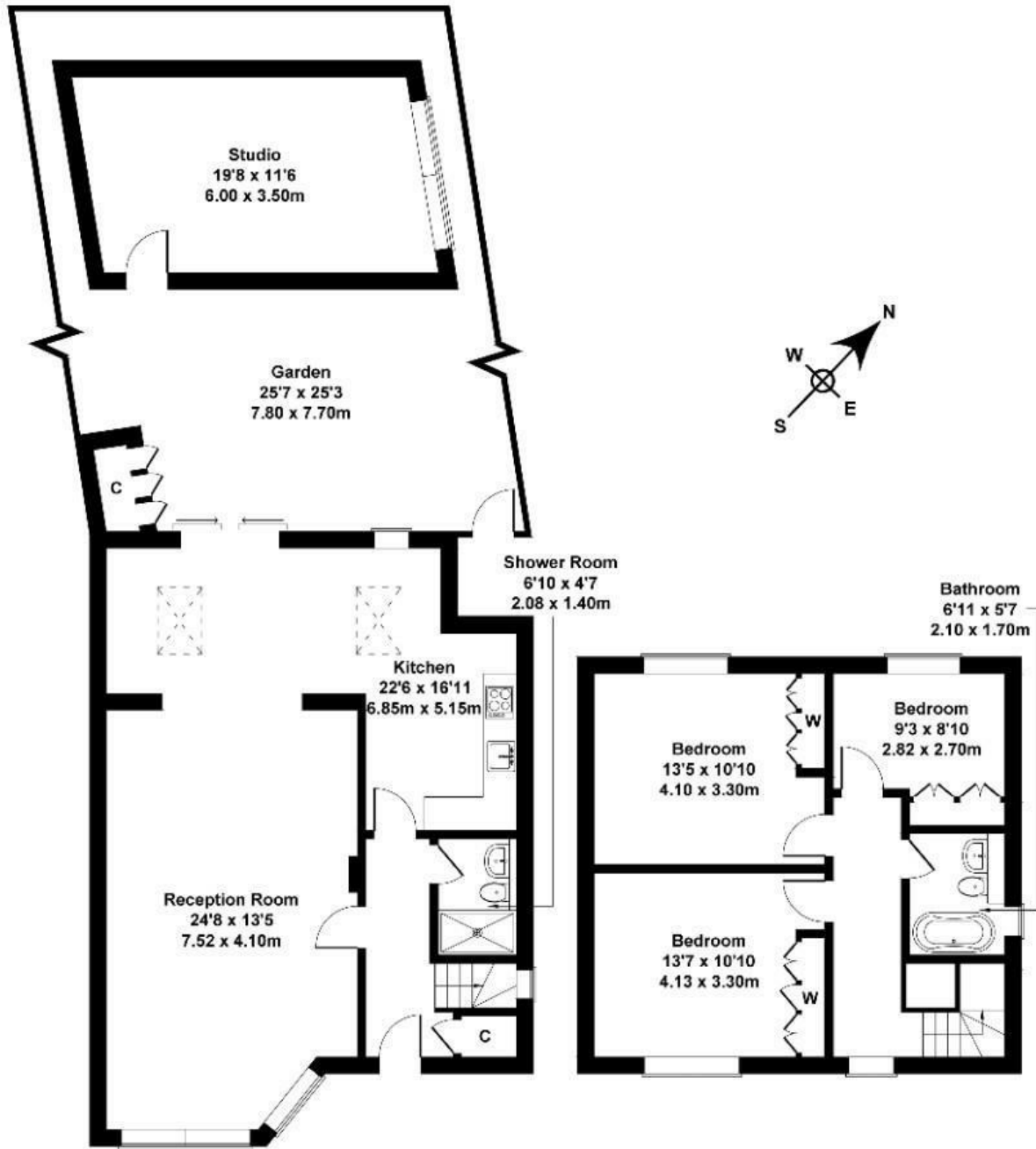
The property has undergone a full refurbishment recently and is currently set up as a three bedroom house with two bathrooms, large reception area (24'8 x 13'5) along with separate kitchen/dining area. The property also benefits from a large well-groomed west-facing garden with studio to the rear, off street parking and no onward chain.

£995,000

- Semi detached
- Three double bedrooms
- West facing garden
- Off street parking
- Completely refurbished to high standard
- No chain
- Potential to extend STPP
- Large studio to rear
- Local schools
- Short walk to Elizabeth Line

Messaline Avenue

Approximate Gross Internal Area
1292 sq ft - 120 sq m
(Excluding Studio)



Not to Scale. Produced by The Plan Portal 2024
For Illustrative Purposes Only.

Energy Efficiency Rating		
	Current	Potential
Very energy efficient - lower running costs		
(92 plus) A		
(81-91) B		83
(69-80) C		
(55-68) D	62	
(39-54) E		
(21-38) F		
(1-20) G		
Not energy efficient - higher running costs		
England & Wales	EU Directive 2002/91/EC	