



44, Bodiam Court Lakeside Drive, Brent, London, NW10 7GE

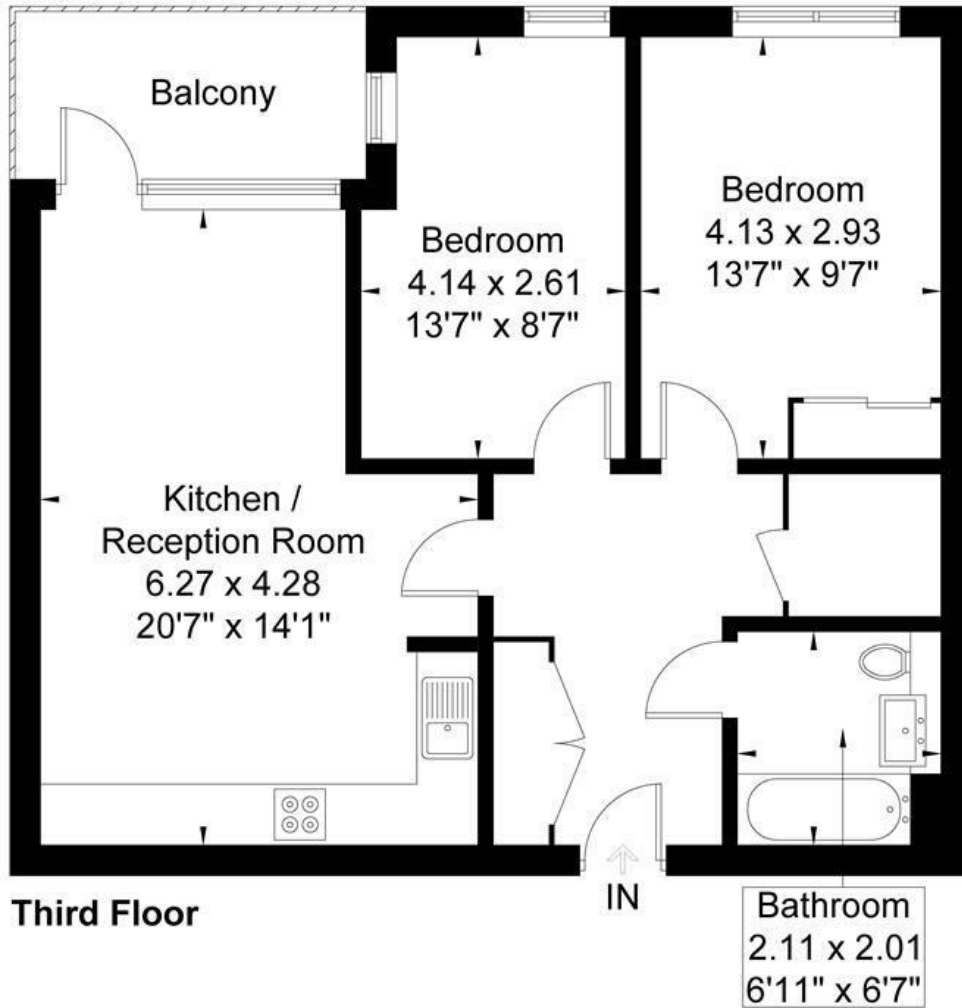
LONG LET. Set within a modern and secure development, this spacious two bedroom flat boasts a balcony and private underground parking.

- AVAILABLE NOW
- UNDERGROUND PARKING
- MODERN INTERIOR
- SECURE DEVELOPMENT
- TWO DOUBLE BEDROOMS
- IDEAL LOCATION

£2,200

Bodiam Court

Approximate Gross Internal Area = 64.4 sq m / 693 sq ft



Although every attempt has been made to ensure accuracy, all measurements are approximate.
The floorplan is for illustrative purposes only and not to scale.

© www.prspective.co.uk

Energy Efficiency Rating		
	Current	Potential
<i>Very energy efficient - lower running costs</i>		
(92 plus) A		
(81-91) B		
(69-80) C		
(55-68) D		
(39-54) E		
(21-38) F		
(1-20) G		
<i>Not energy efficient - higher running costs</i>		
England & Wales	EU Directive 2002/91/EC	