



West Lodge Avenue | W3 |

£1,750,000

A five bedroom, four bathroom semi-detached home with a separate garage on a wonderful residential road in close proximity to Ealing Common. The property also comes with full planning permission, if required, for the conversion into five apartments that further underlines the size and scope of the overall home.

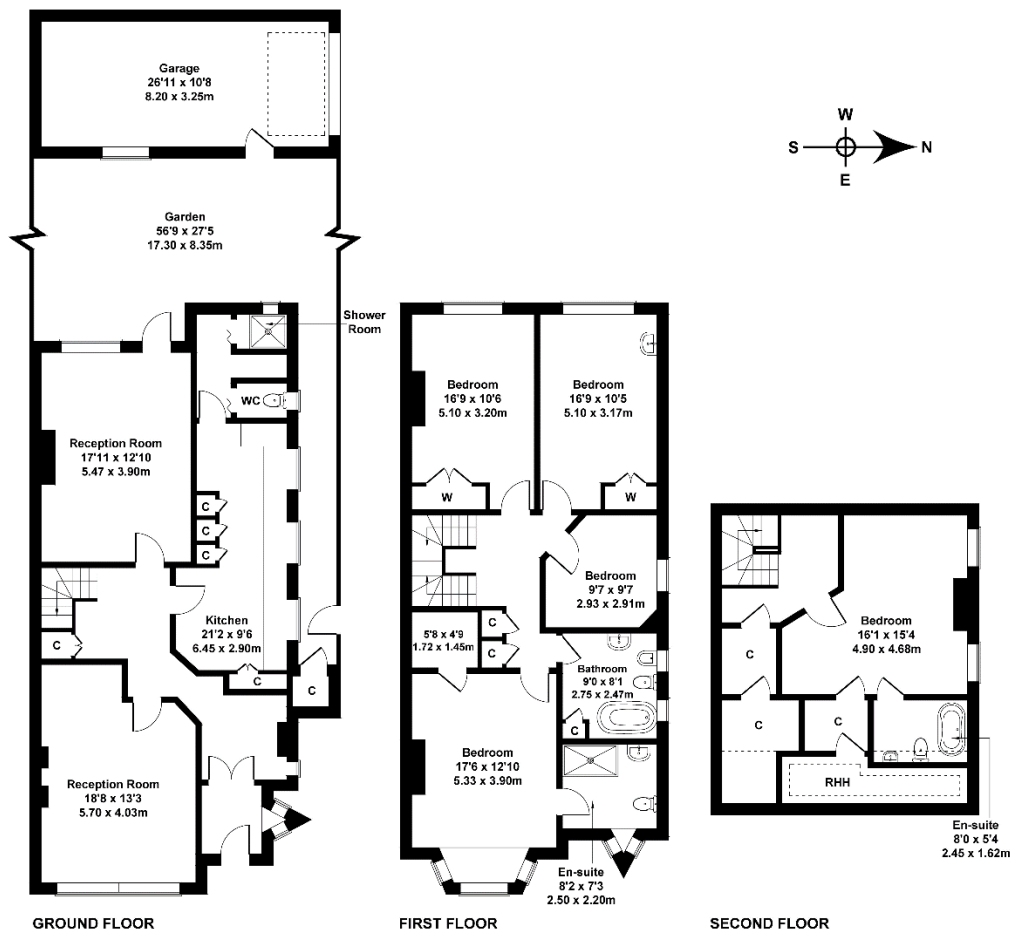
West Lodge Avenue is a pretty tree lined road, located moments from Ealing Common. The houses provide a pretty streetscape with timber clad elevations in a Tudor style and the road benefits from deep frontages to the homes.

- Five bedroom
- Four bathroom
- Semi-detached
- Garage
- No chain



## West Lodge Avenue

Approximate Gross Internal Area  
2648 sq ft - 246 sq m



Not to Scale. Produced by The Plan Portal 2022  
For Illustrative Purposes Only.

## Contact Details

24 Station Parade  
Ealing  
London  
W5 3LD

[www.goviewlondon.co.uk](http://www.goviewlondon.co.uk)  
[sales@goviewlondon.co.uk](mailto:sales@goviewlondon.co.uk)  
020 8992 0333

Score	Energy rating	Current	Potential
92+	A		
81-91	B		
69-80	C		75   C
55-68	D		
39-54	E	41   E	
21-38	F		
1-20	G		

Agents Note: Whilst every care has been taken to prepare these sales particulars, they are for guidance purposes only. All measurements are approximate are for general guidance purposes only and whilst every care has been taken to ensure their accuracy, they should not be relied upon and potential buyers are advised to recheck the measurements.