



MISTORIA
ESTATE AGENTS



Room 1 4 Peacock Avenue Salford

£585 Per

AVAILABLE NOW ROOMS £135 PPPW

ideal company let

Three bedroomed house share in Salford. This property briefly comprises:- Entrance hall, bedroom 1, lounge diner, bathroom, kitchen. To the first floor there are 2 double bedrooms, a study room and a second bathroom. To the rear there is an enclosed rear yard with room for seating. The property is situated in a popular location, and benefits from gas central heating and double glazing.

Bills inclusive, furnished for student requirements.



- 4 bed student house share • Communal Lounge • Fitted Kitchen • Furnished student bedrooms • Well placed for local amenities • Popular location

Entrance Hall

Entrance door, radiator.

Bedroom 1

Double glazed window to front, radiator, Furnished.

Lounge/ Diner

Double glazed bay window to rear, radiator, furnished

Bathroom

W.C Wash hand basin, shower cubicle.

Kitchen

Double glazed window to rear, entrance door to side, range of floor and wall mounted cupboards, worktops, hob, oven, sink auto washing machine. fridge freezer.

Landing

Storage cupboard.

Bedroom 2

Double glazed window to front, radiator, furnished.

Bedroom 3

Double glazed window to rear, radiator, furnished.

Bedroom 4

Double glazed window to rear, radiator, furnished

Bathroom.

Double glazed window to front, Radiator, shower cubicle, wash hand basin, W,C.

Outside Space To Rear

Enclosed rear yard, seating area.

Full Description

RESERVE NOW FOR 2022

Four bedroomed student house share in Salford. This property briefly comprises:- Entrance hall, bedroom 1, lounge diner, bathroom, kitchen. To the first floor there are three double bedrooms and a second bathroom. To the rear there is an enclosed rear yard with room for seating. The property is situated in a popular location, and benefits from gas central heating and double glazing.

Bills inclusive, furnished for student requirements.

VIEWINGS AND VIDEO TOURS AVAILABLE IF REQUIRED

Full Description

RESERVE NOW FOR 2023

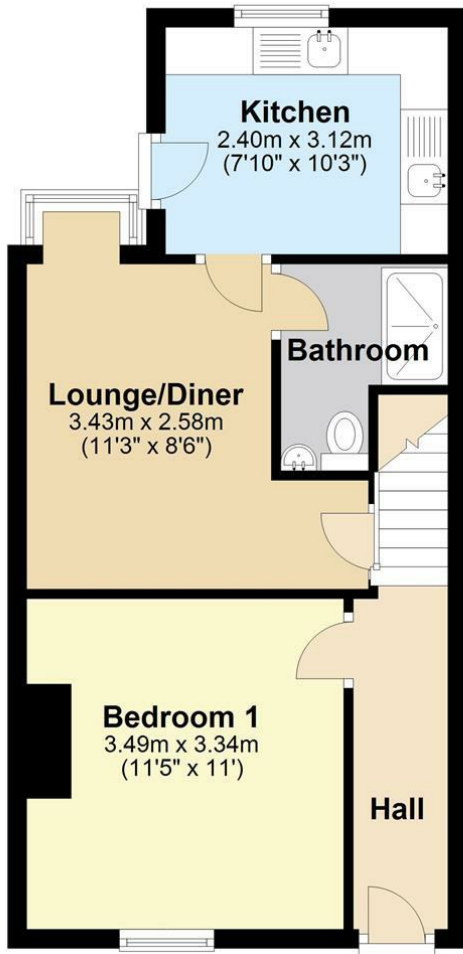
Four bedroomed student house share in Salford. This property briefly comprises:- Entrance hall, bedroom 1, lounge diner, bathroom, kitchen. To the first floor there are three double bedrooms and a second bathroom. To the rear there is an enclosed rear yard with room for seating. The property is situated in a popular location, and benefits from gas central heating and double glazing.

Bills inclusive, furnished for student requirements.

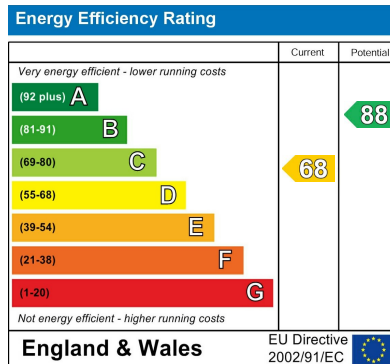




Ground Floor



First Floor



Agents Note: Whilst every care has been taken to prepare these particulars, they are for guidance purposes only. All measurements are approximate and are for general guidance purposes only and whilst every care has been taken to ensure their accuracy, they should not be relied upon and potential buyers/tenants are advised to recheck the measurements

Bolton Mistoria
108-110 Deansgate
Bolton
BL1 1BD

01204 800766
info@mistoria.co.uk
mistoria.co.uk

