



MISTORIA
ESTATE AGENTS



85 Cleggs Lane Manchester

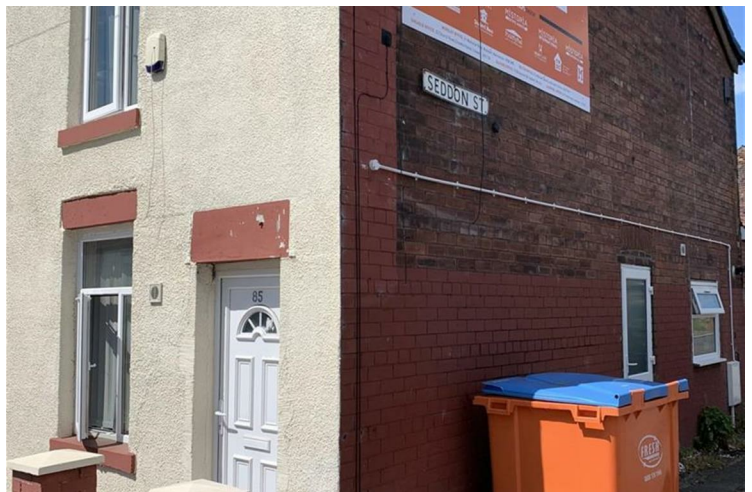
£598 PCM

** THREE ROOMS AVAILABLE **

Welcome to this charming semi-detached house located at 85 Cleggs Lane in the delightful area of Little Hulton. This modern property boasts a cosy reception room, perfect for relaxing or entertaining guests. With one bathroom and an en suite, convenience is key in this lovely home.

This house offers ample space for comfortable living. The property's contemporary design ensures a stylish and inviting atmosphere for you to call home.

This house share opportunity presents one room available, making it an ideal choice for those seeking a friendly and communal living arrangement. The location is simply superb, offering easy access to local amenities and transport links, ensuring that everything you need is within reach.



Full Description

ONE DOUBLE BEDROOM WITH EN-SUITE AVAILABLE NOW

We are pleased to offer this five bedroom house share which is well presented and proportioned to cater for a team of professionals, students or working individuals.

The property will benefit from gas central heating and UPVC double glazing and comprise of a Hall, Modern Kitchen, Landing, Five Bedrooms with en-suites. Rear Garden.

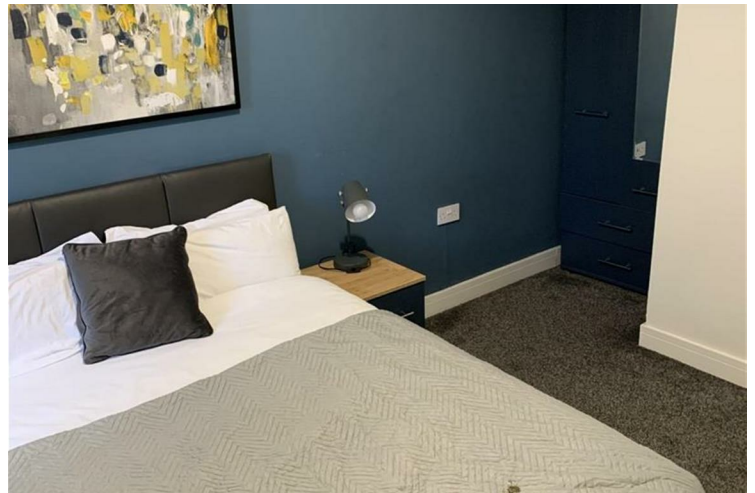
Call now on 01204800765 to register your interest

Disclaimer: The information and images provided in this property advertisement are intended for guidance purposes only. While we make every effort to ensure the accuracy of the details, we strongly recommend that interested parties view the property in person to confirm the property's condition and suitability for their specific requirements. The photographs used in this advertisement may have been digitally enhanced and may not accurately represent the current condition of the property. Any measurements or distances provided are approximate and should not be relied upon for any purpose. Furthermore, the description and details provided are based on the landlord's understanding and may be subject to change without notice. Prospective tenants are advised to verify any specific details that are important to them before entering into any agreement. We do not accept any liability for

any loss or damage, whether direct or indirect, arising from reliance upon the information provided in this advertisement. We strongly advise all parties to seek professional advice and conduct their own due diligence before making any decisions or commitments related to this property. By viewing this advertisement, you agree to the above disclaimer and acknowledge that any reliance on the information provided is at your own risk. Please note that this disclaimer is subject to change and may be updated without prior notice.

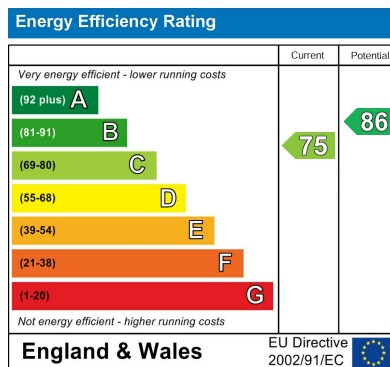
Disclaimer

Disclaimer: The information and images provided in this property advertisement are intended for guidance purposes only. While we make every effort to ensure the accuracy of the details, we strongly recommend that interested parties view the property in person to confirm the property's condition and suitability for their specific requirements. The photographs used in this advertisement may have been digitally enhanced and may not accurately represent the current condition of the property. Any measurements or distances provided are approximate and should not be relied upon for any purpose. Furthermore, the description and details provided are based on the landlord's understanding and may be subject to change without notice. Prospective tenants are advised to verify any specific details that are important to them before entering into any agreement. We do not accept any liability for any loss or damage, whether direct or indirect, arising from reliance upon the information provided in this advertisement. We strongly advise all parties to seek



professional advice and conduct their own due diligence before making any decisions or commitments related to this property. By viewing this advertisement, you agree to the above disclaimer and acknowledge that any reliance on the information provided is at your own risk. Please note that this disclaimer is subject to change and may be updated without prior notice





Agents Note: Whilst every care has been taken to prepare these particulars, they are for guidance purposes only. All measurements are approximate and are for general guidance purposes only and whilst every care has been taken to ensure their accuracy, they should not be relied upon and potential buyers/tenants are advised to recheck the measurements

Bolton Mistoria
108-110 Deansgate
Bolton
BL1 1BD

01204 800766
info@mistoria.co.uk
mistoria.co.uk

