



Block A Wilburn Basin Ordsall Lane Salford

£260,000
Leasehold

Welcome to this stunning apartment located on the 14th floor of a modern building on Ordsall Lane, Salford. This property boasts a contemporary design with 1 reception room, 2 bedrooms, and 2 bathrooms, offering the perfect space for comfortable city living.

One of the highlights of this apartment is the balcony, where you can enjoy breath-taking views of the city skyline and relax after a long day. Whether you are looking for a place to live or an investment opportunity, this property is sure to meet your needs.

Situated in a highly desirable location, this apartment provides easy access to all the amenities and attractions that city living has to offer. With its modern features and convenient layout, this property is ideal for individuals or families looking to experience the vibrant lifestyle of Salford.

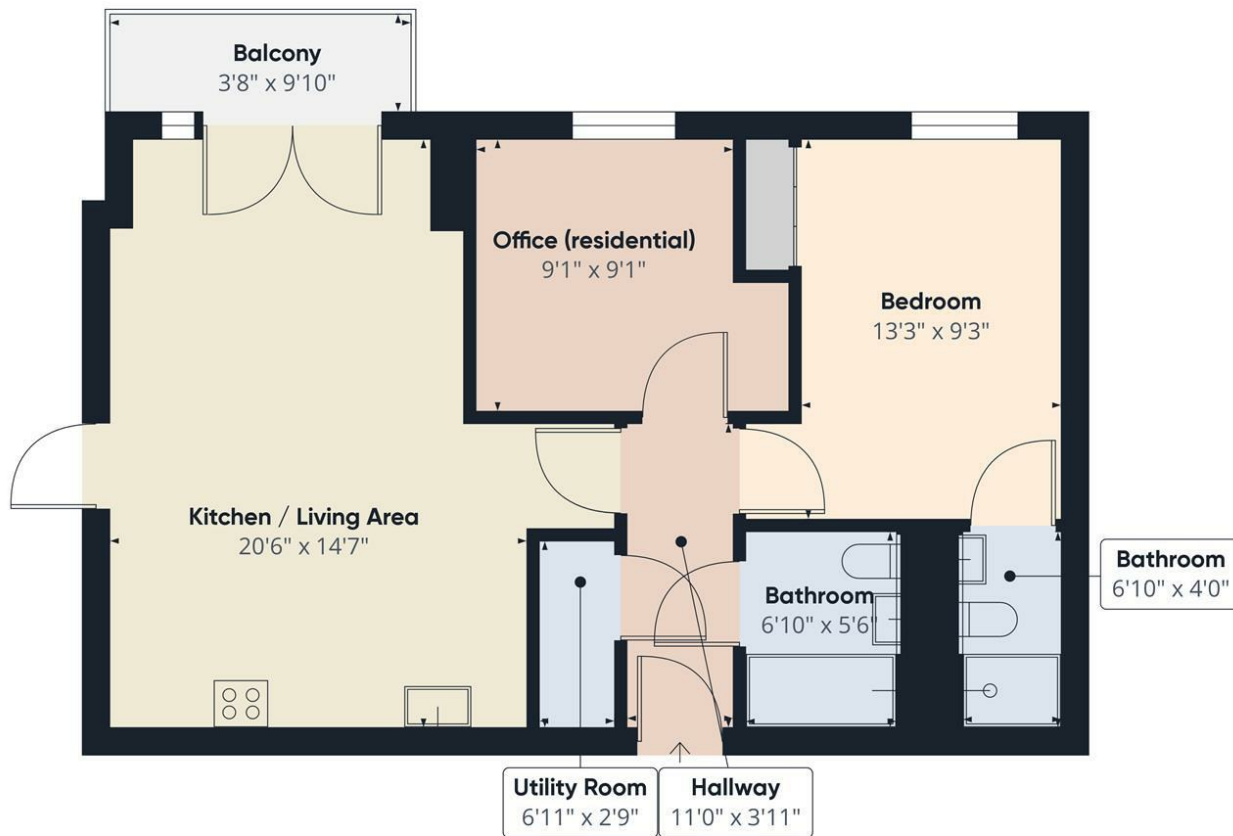
Don't miss out on the opportunity to own or invest in this fantastic apartment in a prime location. Contact us today to arrange a viewing and take the first step towards making this property your new home or investment venture.



- 14th Floor Apartment • Investment Oppotunity • Tenant in Situ • Balcony • High Spec • MISTORIA







Approximate total area⁽¹⁾
650.47 ft²

Balconies and terraces
35.95 ft²

(1) Excluding balconies and terraces

While every attempt has been made to ensure accuracy, all measurements are approximate, not to scale. This floor plan is for illustrative purposes only.

Calculations are based on RICS IPMS 3C standard.

GIRAFFE360



Energy Efficiency Rating		
	Current	Potential
Very energy efficient - lower running costs		
(92 plus) A		
(81-91) B	82	82
(69-80) C		
(55-68) D		
(39-54) E		
(21-38) F		
(1-20) G		
Not energy efficient - higher running costs		
England & Wales	EU Directive 2002/91/EC	

Agents Note: Whilst every care has been taken to prepare these particulars, they are for guidance purposes only. All measurements are approximate and are for general guidance purposes only and whilst every care has been taken to ensure their accuracy, they should not be relied upon and potential buyers/tenants are advised to recheck the measurements

Bolton Mistoria
108-110 Deansgate
Bolton
BL1 1BD

01204 800766
info@mistoria.co.uk
mistoria.co.uk

