



**MISTORIA**  
ESTATE AGENTS



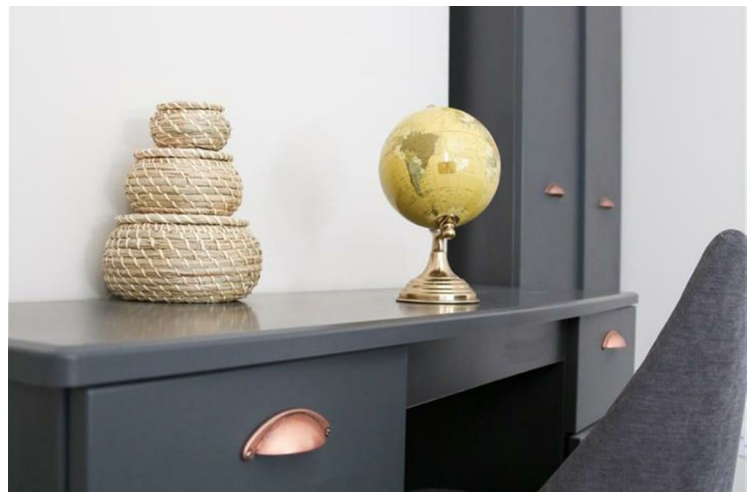
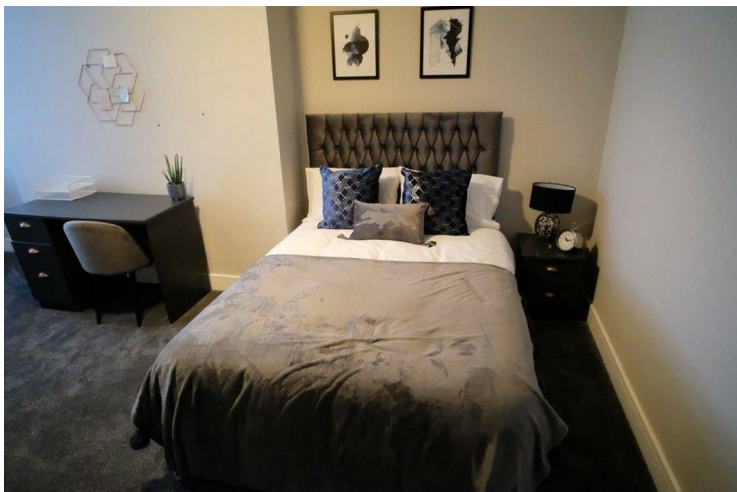
**106a Castle Street  
Bolton**

**£130 Per Week**

Welcome to Mistoria Villa on Castle Street! This stunning property boasts an impressive 15 bedrooms, each with its own en suite bathroom, making it the epitome of luxury and convenience. With a modern design and fully furnished to the highest standard, this property offers a spacious living space.

Situated in an ideal location, Mistoria Villa is perfect for both students and professionals looking for a comfortable and stylish place to call home. The property features a reception room, perfect for entertaining guests or simply relaxing after a long day.

Don't miss out on the opportunity to make Mistoria Villa your new home - book a viewing today and experience the charm and elegance of this exceptional property firsthand!



- 50% OFF THE FIRST MONTHS RENT! DONT MISS OUT • Fully Renovated • Luxury Accommodation

### Full Description

This 15 bed property delivers luxury accommodation in Bolton, ideal for students or professionals and comes complete with stylish studios and en-suite rooms complemented by comfortable social spaces in which to relax.

Situated in the Trinity Gateway zone an area with excellent transport links - the A666 to Manchester and beyond and with Bolton Trinity Street train station only a five minute walk away, the property also benefits from easy access to Bolton Town Centre with a variety of shopping and leisure it could not be in a more convenient location. For students the University can be accessed by a 10 minute walk.

Mistoria Villa features modern, stunning en suite rooms, finished to a superb standard. The en suites are extremely spacious and come with a large, comfortable bed, a desk and chair and all with modern furnishings.

There is a spacious new communal living area providing the perfect place to socialise, relax on a comfortable sofa while watching TV, or catch up with a book.

Whether you want to relax with your friends or unwind on your own, Mistoria Villa has it all. To make things as easy as possible for you, the rent also includes all utility bills and a fibre optic WiFi connection at no extra cost.

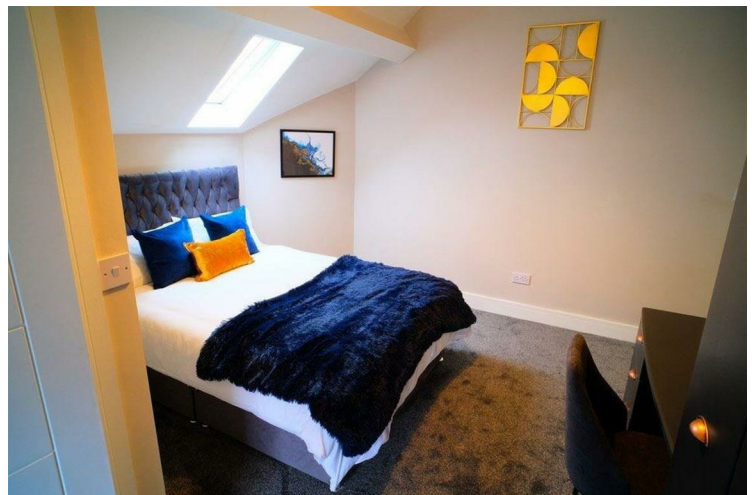
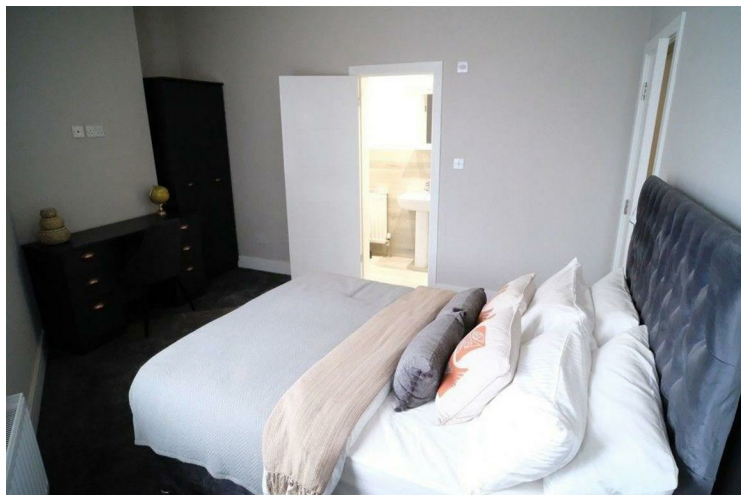
Call the office today, to speak to one of our colleagues to arrange a viewings at your earliest convenience, to avoid disappointment!!

### Disclaimer

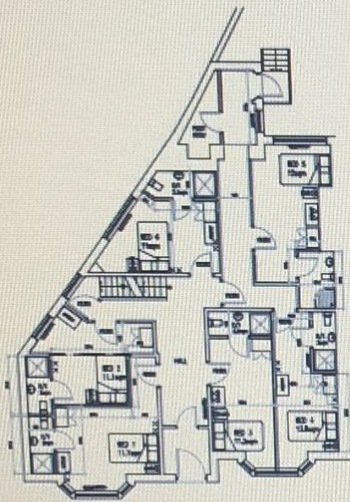
Disclaimer: The information and images provided in this property advertisement are intended for guidance purposes only. While we make every effort to ensure the accuracy of the details, we strongly recommend that interested parties view the property in person to confirm the property's condition and suitability for their specific requirements. The photographs used in this advertisement may have been digitally enhanced and may not accurately represent the current condition of the property. Any measurements or distances provided are approximate and should not be relied upon for any purpose. Furthermore, the description and details provided are based on the landlord's understanding and may be subject to change without notice. Prospective tenants are advised to verify any specific details that are important to them before entering into any agreement. We do not accept any liability for any loss or damage, whether direct or indirect, arising from reliance upon the information provided in this advertisement. We strongly advise all parties to seek professional advice and conduct their own due diligence before making any decisions or commitments related to this property. By viewing this advertisement, you agree to the above disclaimer and acknowledge that any reliance on the information provided is at your own risk. Please note that this disclaimer is subject to change and may be updated without prior notice



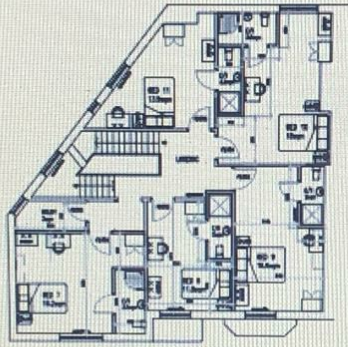
- Fully Furnished • Fibre Optic Broadband • Viewings Advised • Ideal for Students and Professionals







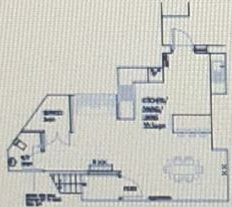
PROPOSED GROUND FLOOR PLAN LAYOUT  
1:100 @ A2



PROPOSED FIRST FLOOR PLAN LAYOUT  
1:100 @ A2



PROPOSED SECOND FLOOR PLAN LAYOUT  
1:100 @ A2



PROPOSED BASEMENT FLOOR PLAN LAYOUT  
1:100 @ A2

PROPOSED FLOOR PLAN LAYOUTS -  
106a CASTLE STREET, BOLTON.

DISCLAIMER : FLOOR PLANS MEASUREMENTS ARE APPROXIMATE AND ARE FOR ILLUSTRATIVE PURPOSES ONLY. WHILE WE DO NOT DOUBT THE FLOOR ACCURACY AND COMPLETENESS, YOU OR YOUR ADVISORS, SHOULD CONDUCT A CAREFUL, INDEPENDANT INVESTIGATION OF THE PROPERTY IN RESPECT OF MONETARY VALLATION

**MISTORIA**  
ESTATE AGENTS



Energy Efficiency Rating		
	Current	Potential
Very energy efficient - lower running costs		
(92 plus) <b>A</b>		
(81-91) <b>B</b>		
(69-80) <b>C</b>		
(55-68) <b>D</b>		
(39-54) <b>E</b>		
(21-38) <b>F</b>		
(1-20) <b>G</b>		
Not energy efficient - higher running costs		
<b>England &amp; Wales</b>	EU Directive 2002/91/EC	
	49	56

Agents Note: Whilst every care has been taken to prepare these particulars, they are for guidance purposes only. All measurements are approximate and are for general guidance purposes only and whilst every care has been taken to ensure their accuracy, they should not be relied upon and potential buyers/tenants are advised to recheck the measurements

Bolton Mistoria  
108-110 Deansgate  
Bolton  
BL1 1BD

01204 800766  
info@mistoria.co.uk  
mistoria.co.uk

