



Grove Hall, Darrington

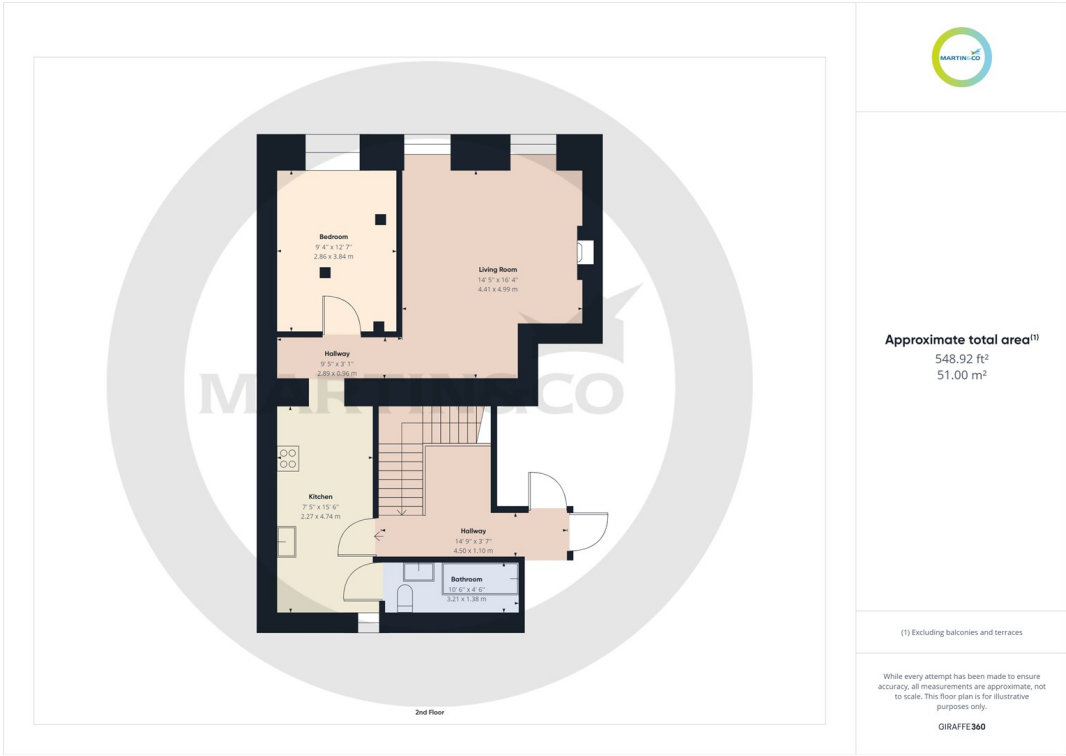
£625 PCM

Grove Hall, Darrington

Date Available: 16th October 2025
Deposit: £721
Unfurnished

- ONE BEDROOM
- KITCHEN WITH BREAKFAST BAR
- CHARACTERFUL APARTMENT
- BATHROOM WITH SHOWER OVER BATH
- QUIET AREA
- SECOND FLOOR - NO LIFT
- OFF ROAD PARKING
- SORRY NO PETS
- EPC EXEMPTION REGISTERED
- COUNCIL TAX BAND A

****ONE BEDROOM APARTMENT**** Located in a listed Georgian mansion on the second floor. Situated just outside Darrington making it ideal for commuters needing access to the A1 and M62 and close to FERRYBRIDGE. Off road parking.



Martin & Co Pontefract Lettings
5 Cornmarket, Pontefract, West Yorkshire, WF8 1AN
01977 799550 . pontefract@martinco.com

01977 799550
<http://www.martinco.com>



Accuracy: References to the Tenure of a Property are based on information supplied by the Seller. The Agent has not had sight of the title documents. A Buyer is advised to obtain verification from their Solicitor. Items shown in photographs including but not limited to carpets, fixtures and fittings are not included unless specifically mentioned within the sales particulars. They may however be available by separate negotiation. Buyers must check the availability of any property and make an appointment to view before embarking on any journey to see a property. No person in the employment of the agent has any authority to make any representation about the property, and accordingly any information given is entirely without responsibility on the part of the agents, sellers(s) or lessors(s). Any property particulars are not an offer or contract, nor form part of one. **Sonic / laser Tape:** Measurements taken using a sonic / laser tape measure may be subject to a small margin of error. **All Measurements:** All Measurements are Approximate. **Services Not tested:** The Agent has not tested any apparatus, equipment, Fixtures and Fittings or services and so cannot verify that they are in working order or fit for the purpose. A Buyer is advised to obtain verification from their Solicitor or Surveyor.

