



Stoborough Crescent, Featherstone

£800 Per Calendar Month

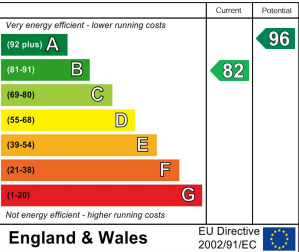

MARTIN&CO

Stoborough Crescent, Featherstone

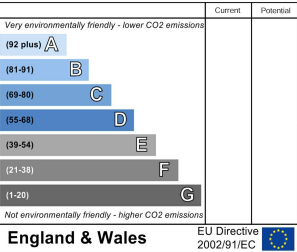
Date Available: 26th July 2024
Deposit: £923
Unfurnished

- POPULAR DEVELOPMENT
- TWO BEDROOM
- MODERN TOWNHOUSE
- OFF ROAD PARKING FOR TWO CARS
- OPEN PLAN LIVING
- BUILT IN WARDROBES
- CLOSE TO LOCAL AMENITIES
- COUNCIL TAX BAND A
- VIRTUAL VIEWING AVAILABLE

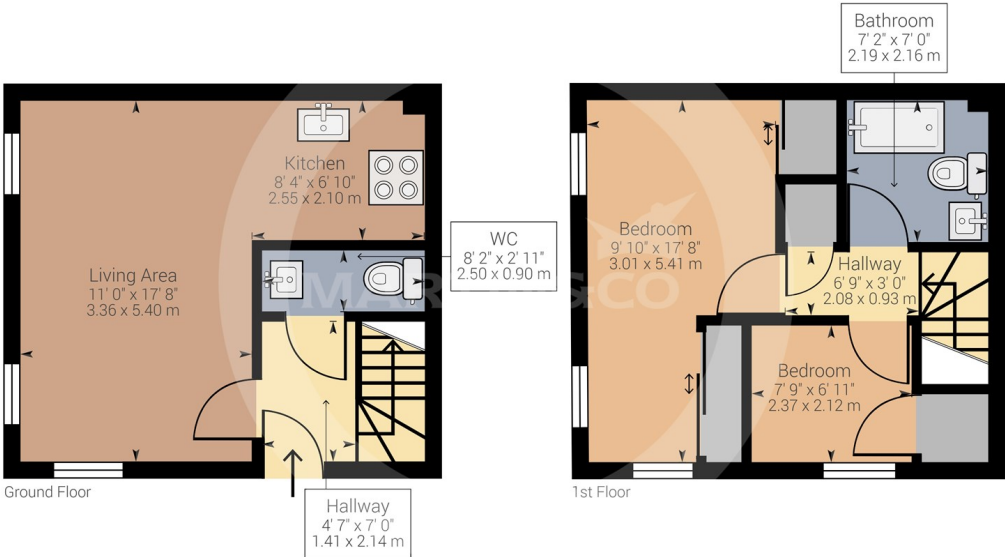
Energy Efficiency Rating



Environmental Impact (CO₂) Rating



****MODERN TOWN HOUSE**** On the Strata development off Girnhill Lane, Featherstone. Open plan living room/kitchen. One double bedroom, One single bedroom. Gas central heating. Downstairs cloakroom. Off road parking. Virtual Viewing available.



Approximate net internal area: 638.83 ft² / 59.35 m²
While every attempt has been made to ensure accuracy, all measurements are approximate, not to scale. This floor plan is for illustrative purpose only and should be used as such by any prospective tenant or purchaser.



Martin & Co Pontefract Lettings
5 Cornmarket, Pontefract, West Yorkshire, WF8 1AN
01977 799550 . pontefract@martinco.com

01977 799550
<http://www.martinco.com>



Accuracy: References to the Tenure of a Property are based on information supplied by the Seller. The Agent has not had sight of the title documents. A Buyer is advised to obtain verification from their Solicitor. Items shown in photographs including but not limited to carpets, fixtures and fittings are not included unless specifically mentioned within the sales particulars. They may however be available by separate negotiation. Buyers must check the availability of any property and make an appointment to view before embarking on any journey to see a property. No person in the employment of the agent has any authority to make any representation about the property, and accordingly any information given is entirely without responsibility on the part of the agents, sellers(s) or lessors(s). Any property particulars are not an offer or contract, nor form part of one. **Sonic / laser Tape:** Measurements taken using a sonic / laser tape measure may be subject to a small margin of error. **All Measurements:** All Measurements are Approximate. **Services Not tested:** The Agent has not tested any apparatus, equipment, Fixtures and Fittings or services and so cannot verify that they are in working order or fit for the purpose. A Buyer is advised to obtain verification from their Solicitor or Surveyor.

