



Conisborough Way, Hemsworth

£650 PCM


MARTIN & CO

Conisborough Way, Hemsworth

Date Available:

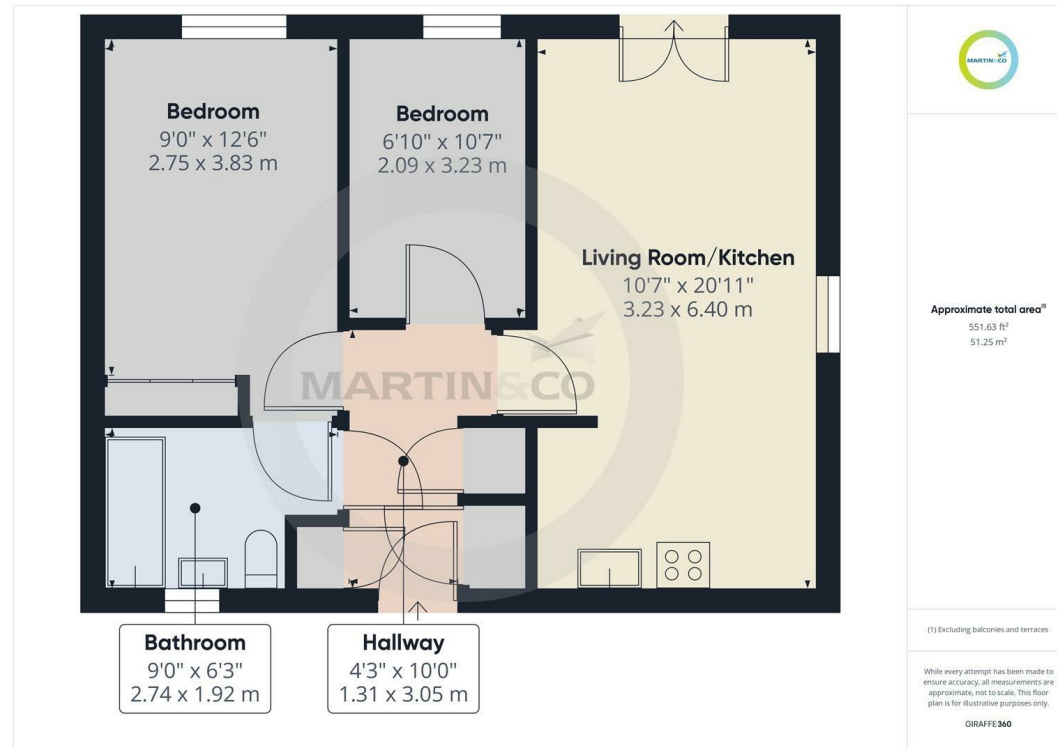
Deposit: £750

Unfurnished

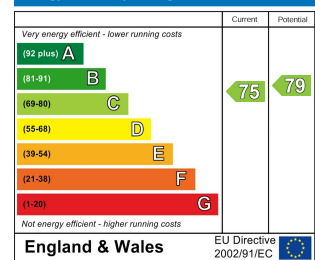
Council Tax Band: A

- MODERN APARTMENT
- FIRST FLOOR
- TWO BEDROOMS
- BATHROOM WITH SHOWER OVER THE BATH
- OPEN PLAN LIVING ROOM/KITCHEN
- JULIET BALCONY OFF THE LIVING ROOM
- OFF ROAD PARKING
- POPULAR LOCATION
- SORRY NO PETS
- COUNCIL TAX BAND A

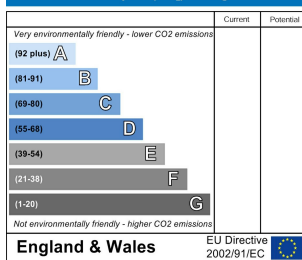
****2 BEDROOM MODERN FIRST FLOOR APARTMENT**** In a sought after development. Open plan living room/kitchen including appliances. Unfurnished. Allocated parking.



Energy Efficiency Rating



Environmental Impact (CO₂) Rating



Martin & Co Pontefract Lettings

5 Cornmarket, Pontefract, West Yorkshire, WF8 1AN

01977 799550 . pontefract@martinco.com

01977 799550

<http://www.martinco.com>



Accuracy: References to the Tenure of a Property are based on information supplied by the Seller. The Agent has not had sight of the title documents. A Buyer is advised to obtain verification from their Solicitor. Items shown in photographs including but not limited to carpets, fixtures and fittings are not included unless specifically mentioned within the sales particulars. They may however be available by separate negotiation. Buyers must check the availability of any property and make an appointment to view before embarking on any journey to see a property. No person in the employment of the agent has any authority to make any representation about the property, and accordingly any information given is entirely without responsibility on the part of the agents, sellers(s) or lessors(s). Any property particulars are not an offer or contract, nor form part of one. **Sonic / laser Tape:** Measurements taken using a sonic / laser tape measure may be subject to a small margin of error. **All**

Measurements: All Measurements are Approximate. **Services Not tested:** The Agent has not tested any apparatus, equipment, Fixtures and Fittings or services and so cannot verify that they are in working order or fit for the purpose. A Buyer is advised to obtain verification from their Solicitor or Surveyor.

