

A brown horse is running across a green field. In the background, there is a white house with a porch, surrounded by trees. The scene is misty or foggy, creating a soft, ethereal atmosphere. The sun is low in the sky, casting a warm glow.


MILLFIELD GARDENS

BRENTWOOD

meg

JUST 16 MODERN, SPACIOUS HOMES NESTLED
BESIDE SCENIC EQUESTRIAN FIELDS

JH

A woman with long dark hair, wearing a grey patterned jacket and a grey headband, is riding a white horse with dark spots. The scene is set against a warm, golden sunset background with silhouettes of trees. The text "MILLFIELDS' OF DREAMS" is overlaid in a white serif font.

MILLFIELDS' OF DREAMS

LIGHT LOUNGE

NESTLED in the heart of the countryside, Millfield Gardens redefines contemporary living with an effortless blend of modern luxury and pastoral charm. The pièce de résistance? A mezzanine lounge with soaring, sun-drenched windows that frame fields where graceful horses wander freely—creating a scene that feels more like a dream than reality.

As you step into this airy haven, the mezzanine level floats above like a gallery in a fine art museum, while the natural light bathes the room in a golden glow. Every detail is considered: sleek furnishings harmonise with the organic tones of wood flooring, creating a space that's both minimalist and inviting.

Outside, the sight of majestic horses grazing in the fields evokes a sense of tranquility and connection to nature that few developments can offer. It's a vista that shifts with the seasons, ensuring your home is as alive and dynamic as the landscape beyond.

Whether sipping your morning coffee or hosting an intimate soirée, the serene countryside views—complete with the gentle presence of horses—provide the perfect backdrop for modern sophistication.

At Millfield Gardens, you don't just live; you luxuriate in style and serenity, with nature as your closest companion.



OUTSIDE IN DINING

At the heart of the open-plan design, the dining area extends effortlessly from the lounge, offering an inviting space for everything from casual dinners to lively gatherings. Expansive bi-fold doors open wide, creating a seamless transition between indoor and outdoor living. Step onto your private terrace and take in the serene countryside views, where grazing horses enhance the peaceful ambiance with a touch of natural charm..

This connection to nature lies at the heart of Millfield Gardens, where every meal becomes an experience framed by the beauty of the landscape. Whether entertaining guests or enjoying a quiet meal, the view of these majestic creatures and the open fields provides a sense of calm that is unmatched. Here, the harmony between luxury and the natural world enhances every moment.

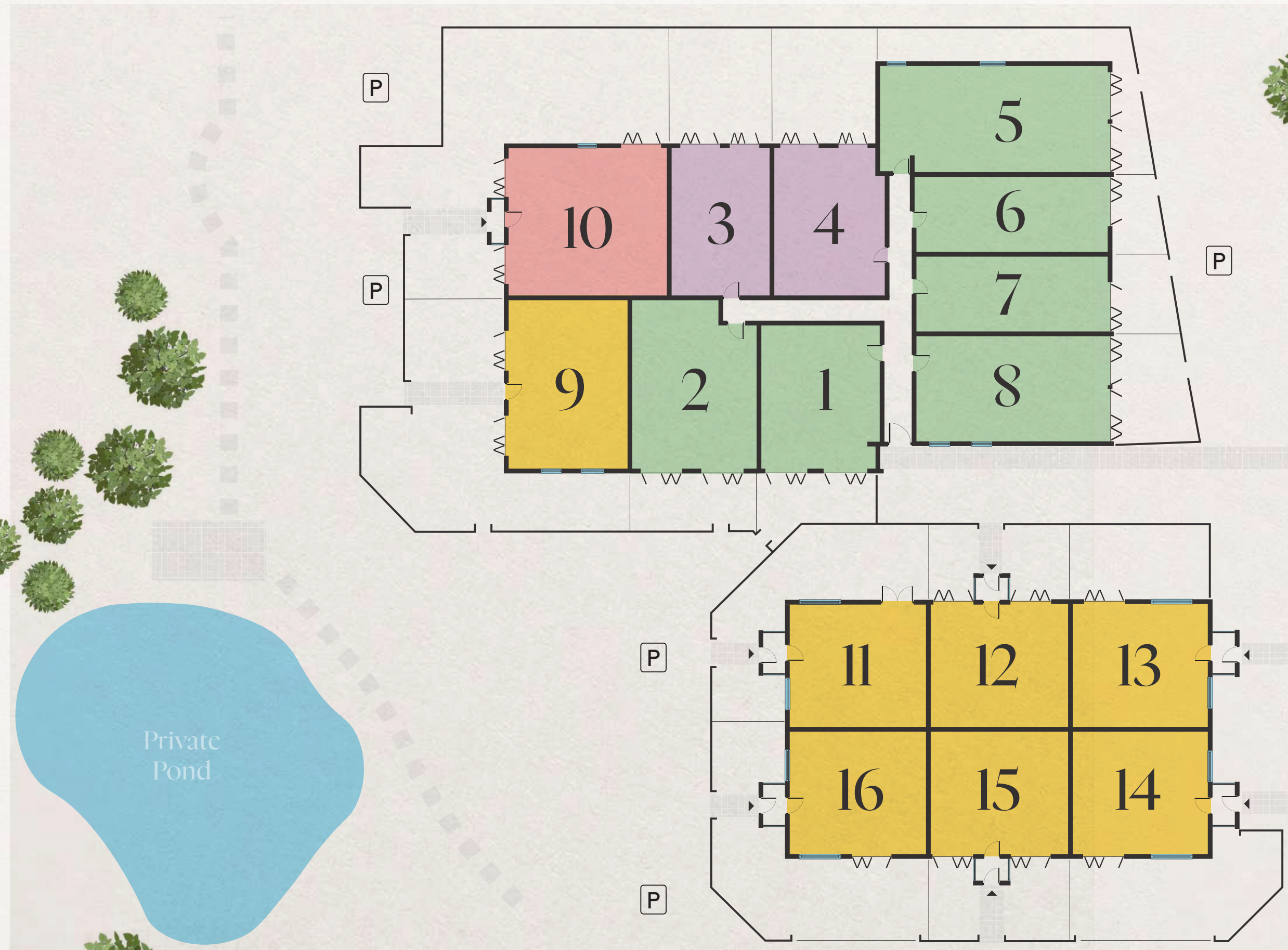


BOUDOIR MEZZANINE

As you ascend to the mezzanine level, tranquility flows seamlessly into the master bedroom—a true sanctuary designed for rest and rejuvenation. Vaulted ceilings, paired with strategically placed skylights, flood the room with soft natural light, creating an airy and calming space. The floor-to-ceiling windows offer uninterrupted views of the vast fields, where horses roam peacefully, further enhancing the sense of connection to nature.

This is more than just a bedroom; it's your personal retreat. Every detail, from the glass balustrades to the rich wooden floors, has been designed to provide a perfect balance of modern comfort and the serenity of the surrounding landscape.

At Millfield Gardens, your living experience extends far beyond the walls of your home, into the picturesque beauty of the countryside just beyond your window.



SITE MAP

MILLFIELD GARDENS

- GF House
- Apartments
- Duplex Apartments with Mezzanines
- Houses with Mezzanines

All homes feature private gardens and a spacious communal area with a private pond, overlooking the manège and grazing horses in the field.

Whilst every attempt has been made to ensure the accuracy of the floor plans shown, all measurements, positioning, fixtures, features, fittings and any other data shown are an approximate interpretation for illustrative purposes only and are not to scale. No responsibility is taken for any error, omission, miss-statement or use of data shown.

HOME 01

1 BEDROOM - DUPLEX MEZZAININE APARTMENT

Total Area: **931 SqFt** + Private Garden

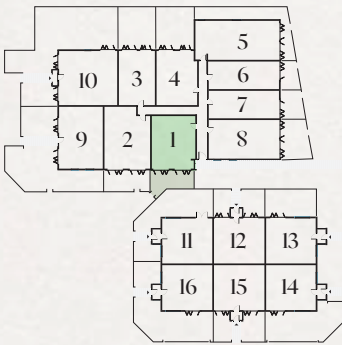


GROUND LEVEL



MEZZANINE LEVEL

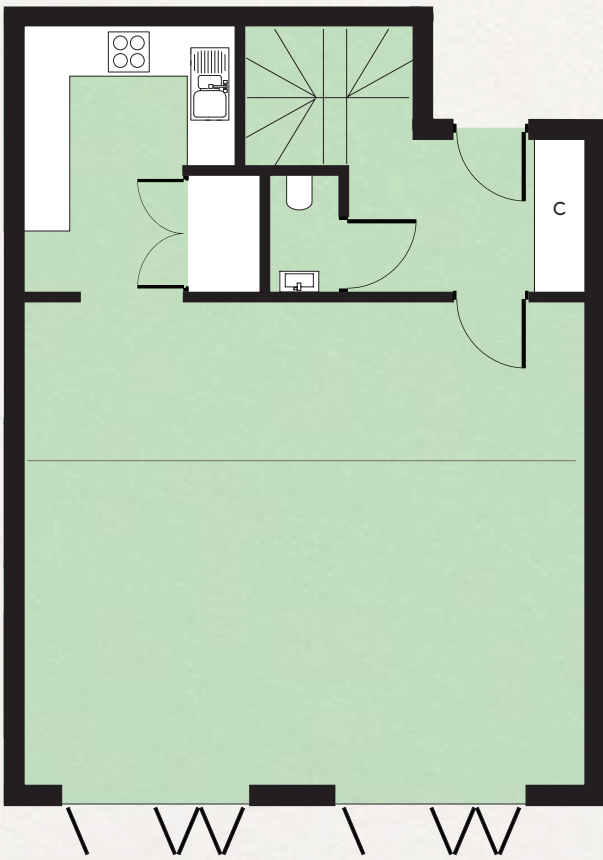
| ROOM | F T | | |
|--------------------|------|---|------|
| GROUND & MEZZANINE | 26.9 | X | 22.3 |
| LIVING/DINING | 16.4 | X | 22.3 |
| KITCHEN | 19.8 | X | 7.5 |
| BEDROOM / EN-SUITE | 14.7 | X | 19.6 |



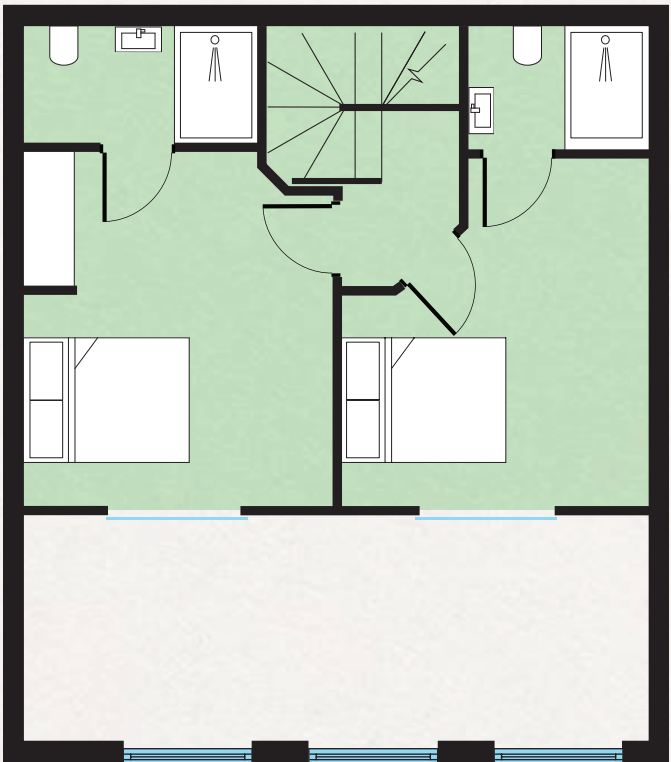
HOME 02

2 BEDROOM - DUPLEX MEZZANINE APARTMENT

Total Area: **931 SqFt** + Private Garden

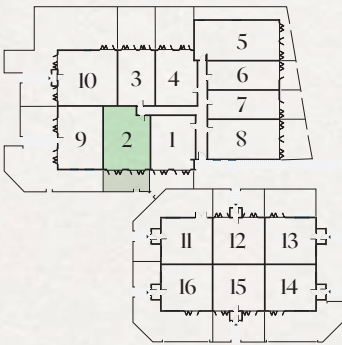


GROUND LEVEL



MEZZANINE LEVEL

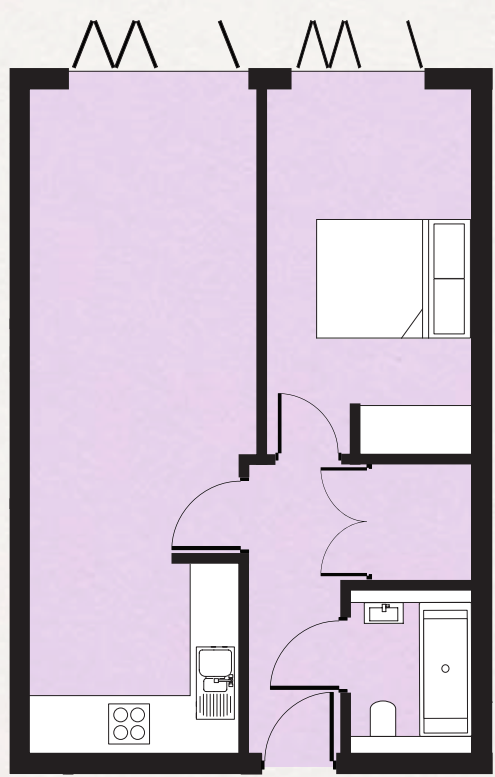
| ROOM | F T | | |
|----------------------|------|---|------|
| GROUND & MEZZANINE | 26.9 | X | 22.3 |
| LIVING/DINING | 16.4 | X | 22.3 |
| KITCHEN | 9.8 | X | 7.5 |
| BEDROOM 1 / EN-SUITE | 14.7 | X | 19.6 |
| BEDROOM 2 / EN-SUITE | 14.7 | X | 19.6 |



HOME 03

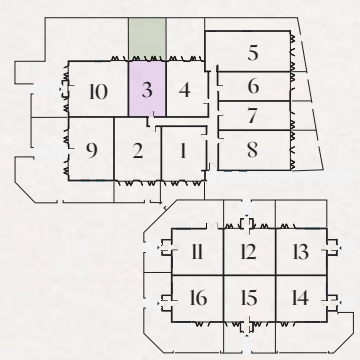
1 BEDROOM - APARTMENT

Total Area: 640 SqFt + Private Garden



GROUND LEVEL

| ROOM | FT | | |
|-----------------------|------|---|------|
| GROUND FLOOR | 18.0 | X | 27.5 |
| LIVING/DINING/KITCHEN | 9.0 | X | 27.5 |
| BEDROOM 1 | 15.5 | X | 8.5 |



HOME 04

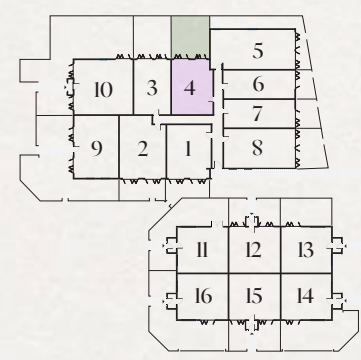
1 BEDROOM - APARTMENT

Total Area: 650 SqFt + Private Garden



GROUND LEVEL

| ROOM | FT | | |
|-----------------------|------|---|------|
| GROUND FLOOR | 18.0 | X | 27.5 |
| LIVING/DINING/KITCHEN | 9.0 | X | 27.5 |
| BEDROOM 1 | 15.5 | X | 8.5 |



HOME 05

3 BEDROOM - DUPLEX MEZZANINE APARTMENT

Total Area: **1240 SqFt** + Private Garden

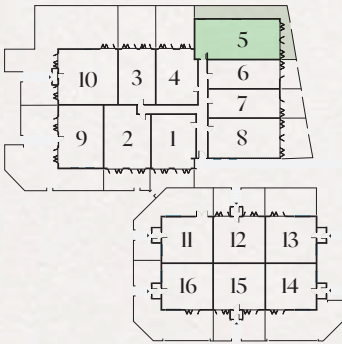


MEZZANINE LEVEL



GROUND LEVEL

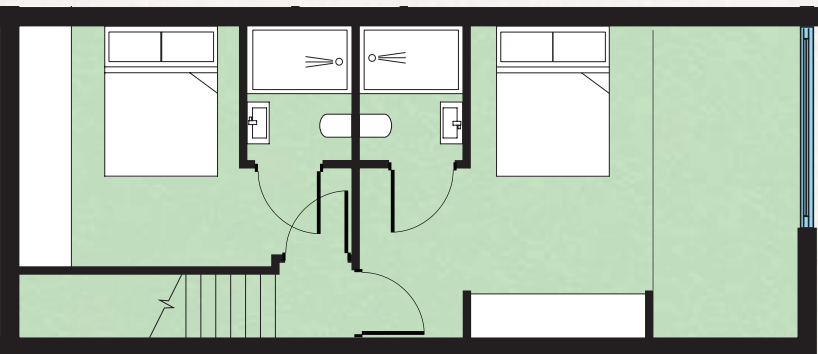
| ROOM | FT | | |
|-----------------------|------|---|------|
| GROUND & MEZZANINE | 42.6 | X | 19.3 |
| LIVING/DINING/KITCHEN | 21.3 | X | 19.3 |
| BEDROOM 1 / EN-SUITE | 17.3 | X | 19.3 |
| BEDROOM 2 | 11.8 | X | 10.5 |
| BEDROOM 3 | 9.5 | X | 12.5 |



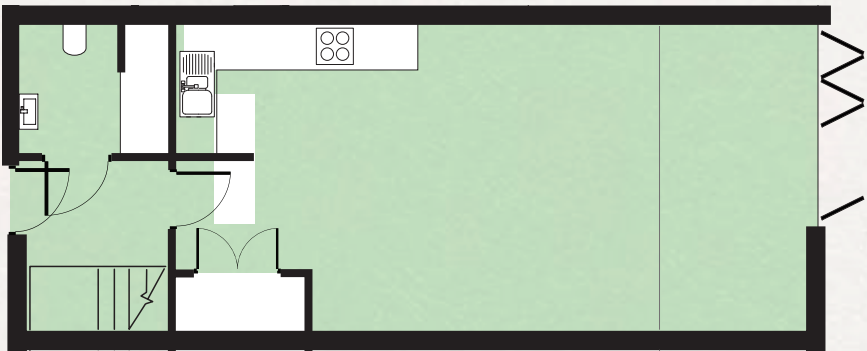
HOME 06

2 BEDROOM - DUPLEX MEZZANINE APARTMENT

Total Area: **930 SqFt** + Private Garden

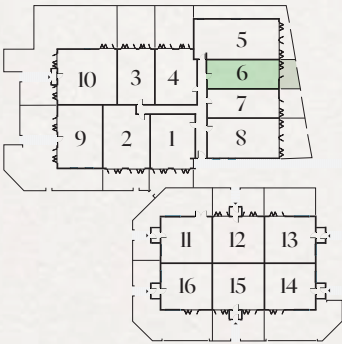


UPPER LEVEL



GROUND LEVEL

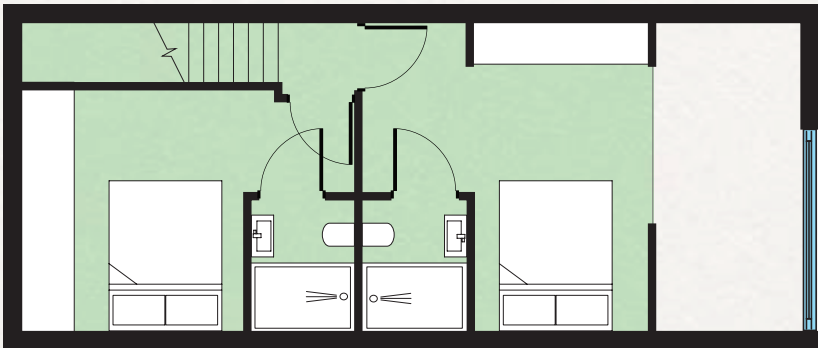
| ROOM | FT | | |
|-----------------------|------|---|------|
| GROUND & MEZZANINE | 35.5 | X | 14.0 |
| LIVING/DINING/KITCHEN | 28.8 | X | 14.0 |
| BEDROOM 1 / EN-SUITE | 13.0 | X | 14.0 |
| BEDROOM 2 / EN-SUITE | 14.5 | X | 12.5 |



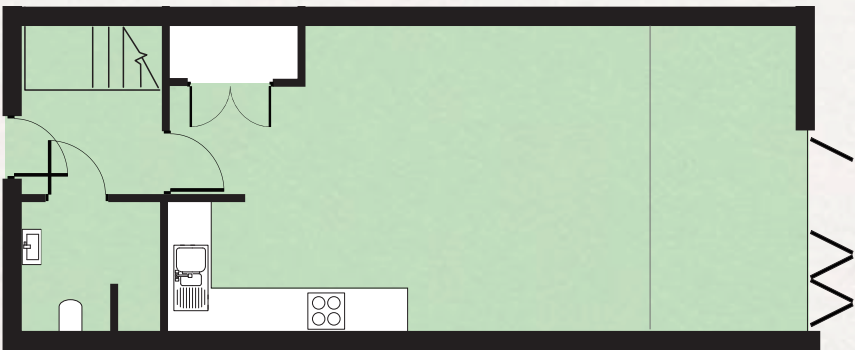
HOME 07

2 BEDROOM - DUPLEX MEZZANINE APARTMENT

Total Area: **930 SqFt** + Private Garden

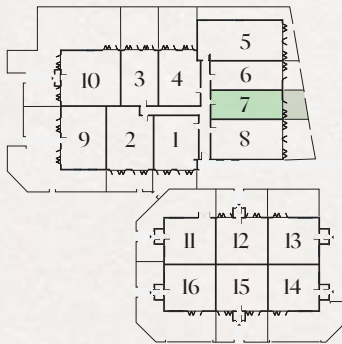


MEZZANINE LEVEL



GROUND LEVEL

| ROOM | FT | | |
|------------------------|------|---|------|
| GROUND & MEZZANINE | 35.5 | X | 14.0 |
| LIVING/DINING/KITCHEN | 28.8 | X | 14.0 |
| BEDROOM 1 INC EN-SUITE | 13.0 | X | 14.0 |
| BEDROOM 2 INC EN-SUITE | 14.5 | X | 12.5 |



HOME 08

3 BEDROOM - DUPLEX MEZZANINE APARTMENT

Total Area: **1065 SqFt** + Private Garden

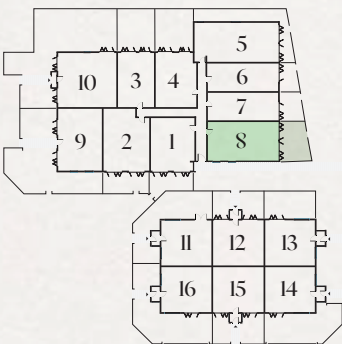


MEZZANINE LEVEL



GROUND LEVEL

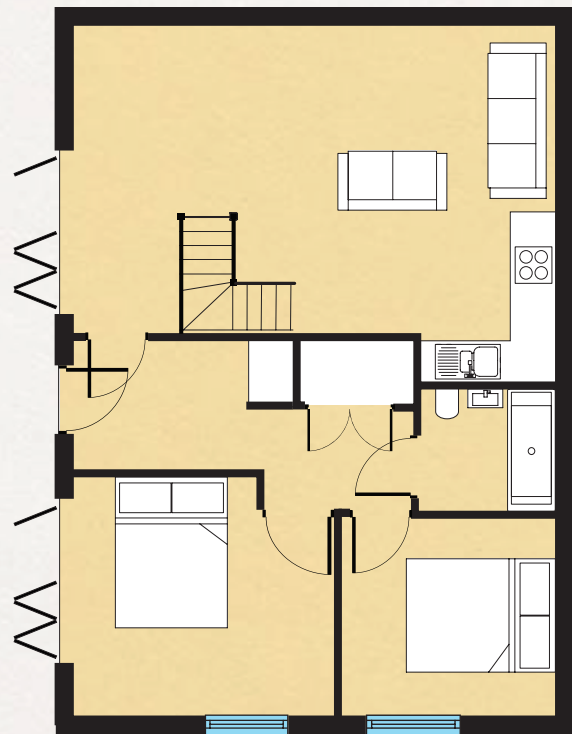
| ROOM | FT | | |
|-----------------------|------|---|------|
| GROUND & MEZZANINE | 35.5 | X | 19.3 |
| LIVING/DINING/KITCHEN | 22.3 | X | 19.3 |
| BEDROOM 1 /EN-SUITE | 17.3 | X | 19.3 |
| BEDROOM 2 | 10.8 | X | 3.0 |
| BEDROOM 3 | 7.2 | X | 3.0 |



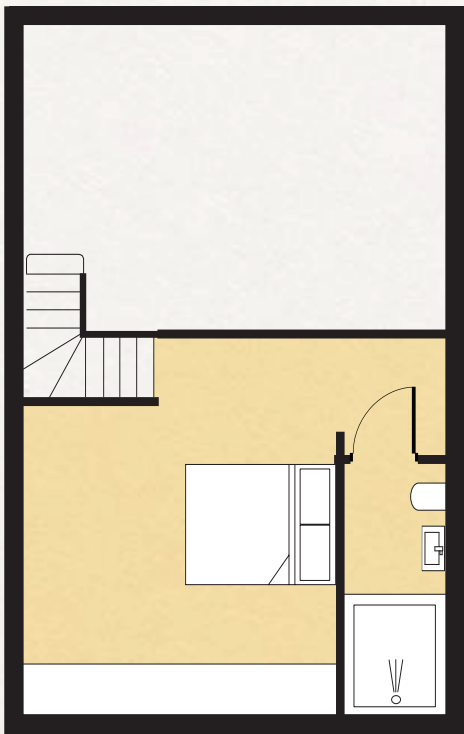
HOME 09

3 BEDROOM - HOUSE WITH MEZZANINE

Total Area: 920 SqFt + Private Garden

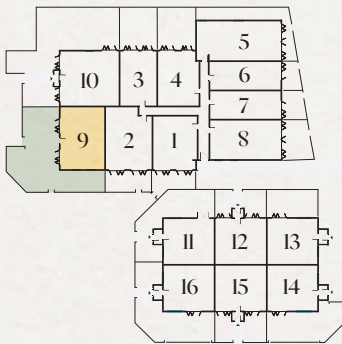


GROUND LEVEL



MEZZANINE LEVEL

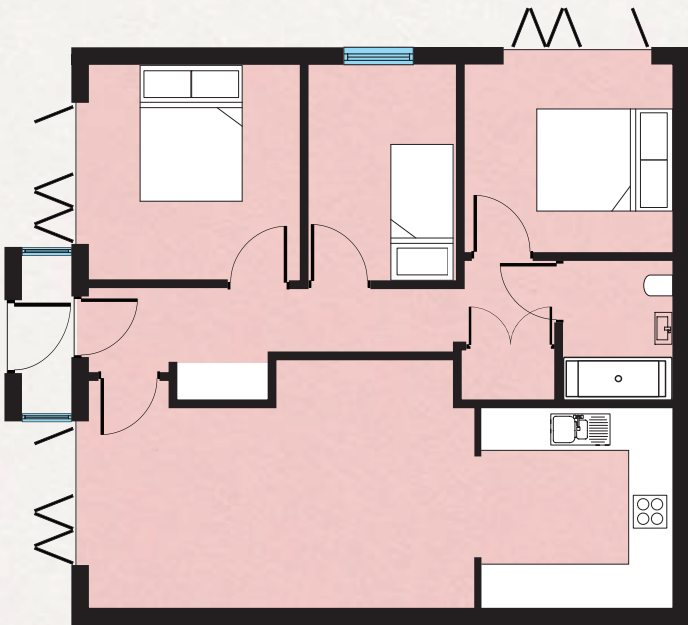
| ROOM | F T | | |
|-----------------------|------|---|------|
| GROUND & MEZZANINE | 22.3 | X | 30.0 |
| LIVING/DINING/KITCHEN | 12.5 | X | 30.0 |
| BEDROOM 1 / EN-SUITE | 17.4 | X | 13.4 |
| BEDROOM 2 | 11.8 | X | 10.5 |
| BEDROOM 3 | 8.5 | X | 9.8 |



HOME 10

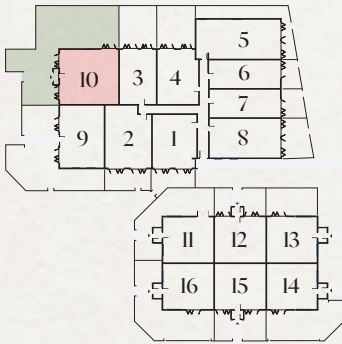
3 BEDROOM - HOUSE

Total: 855 SqFt + Private Garden



GROUND LEVEL

| ROOM | F T | | |
|-----------------------|------|---|------|
| GROUND & MEZZANINE | 30.2 | X | 27.5 |
| LIVING/DINING/KITCHEN | 30.2 | X | 12.5 |
| BEDROOM 1 | 10.5 | X | 10.8 |
| BEDROOM 2 | 9.5 | X | 10.5 |
| BEDROOM 3 | 7.5 | X | 10.8 |



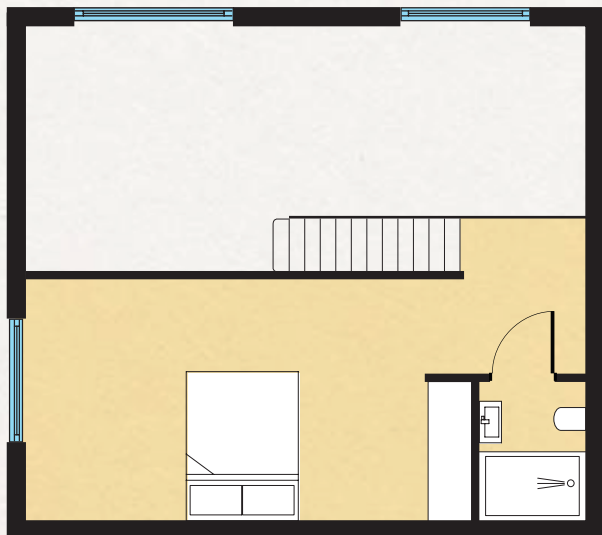
HOME 11

2 BEDROOM - HOUSE WITH MEZZANINE

Total Area: 888 SqFt + Private Garden

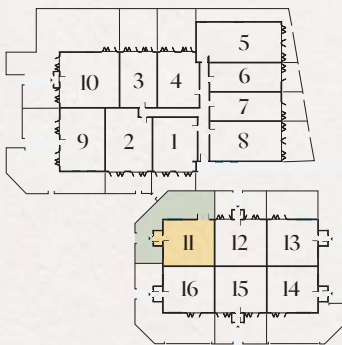


GROUND LEVEL



MEZZANINE LEVEL

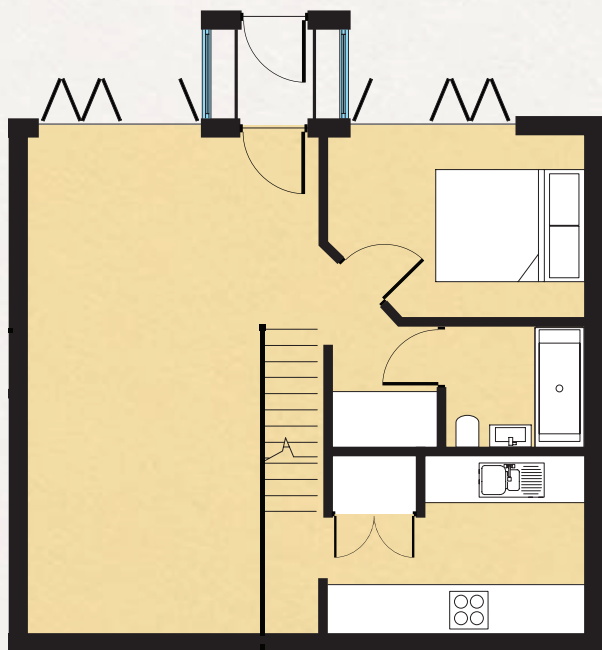
| ROOM | F T | | |
|-----------------------|------|---|------|
| GROUND & MEZZANINE | 22.0 | X | 25.5 |
| LIVING/DINING/KITCHEN | 10.8 | X | 25.5 |
| BEDROOM 1 / EN-SUITE | 10.8 | X | 25.5 |
| BEDROOM 2 | 10.5 | X | 10.8 |



HOME 12

2 BEDROOM - HOUSE WITH MEZZANINE

Total: 888 SqFt + Private Garden

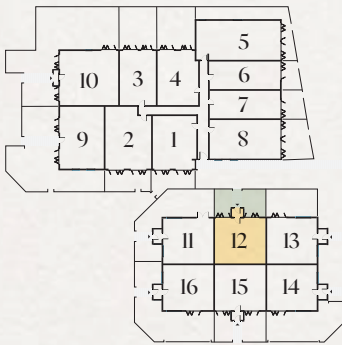


GROUND LEVEL



MEZZANINE LEVEL

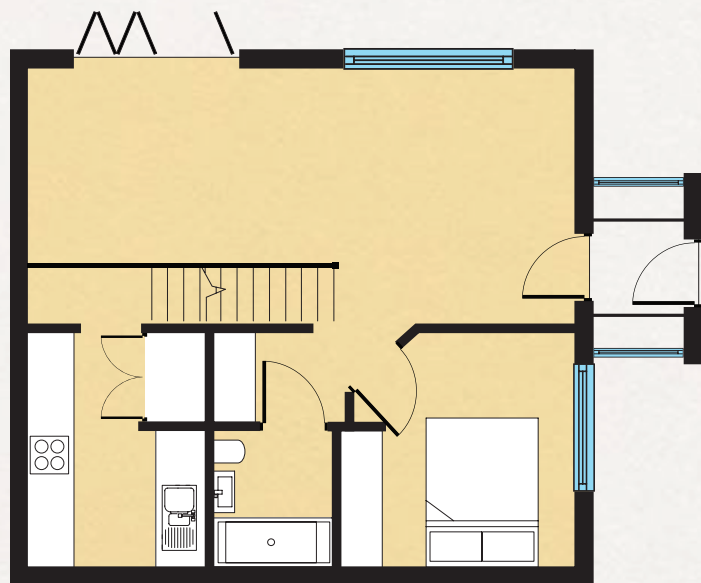
| ROOM | F T | | |
|-----------------------|------|---|------|
| GROUND & MEZZANINE | 22.0 | X | 25.5 |
| LIVING/DINING/KITCHEN | 10.8 | X | 25.5 |
| BEDROOM 1 / EN-SUITE | 10.8 | X | 25.5 |
| BEDROOM 2 | 10.5 | X | 10.8 |



HOME 13

2 BEDROOM - HOUSE WITH MEZZANINE

Total Area: 888 SqFt + Private Garden

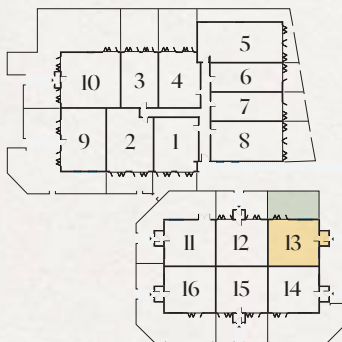


GROUND LEVEL



MEZZANINE LEVEL

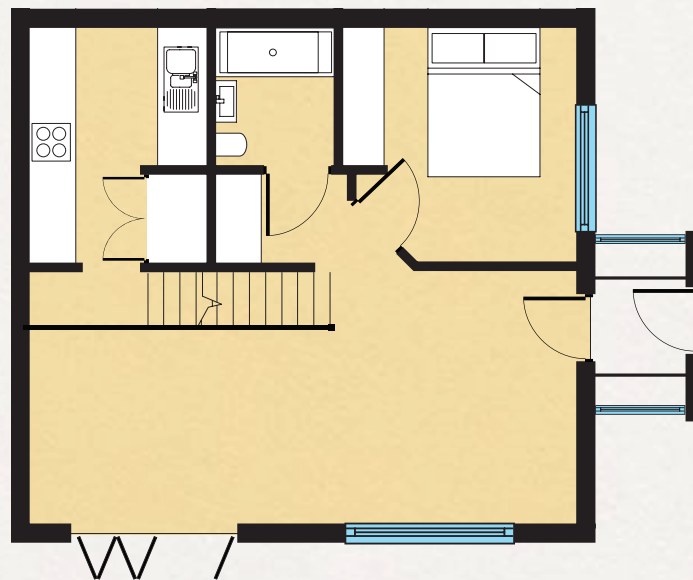
| ROOM | F T | | |
|-----------------------|------|---|------|
| GROUND & MEZZANINE | 22.0 | X | 25.5 |
| LIVING/DINING/KITCHEN | 10.8 | X | 25.5 |
| BEDROOM 1 / EN-SUITE | 10.8 | X | 25.5 |
| BEDROOM 2 | 10.5 | X | 10.8 |



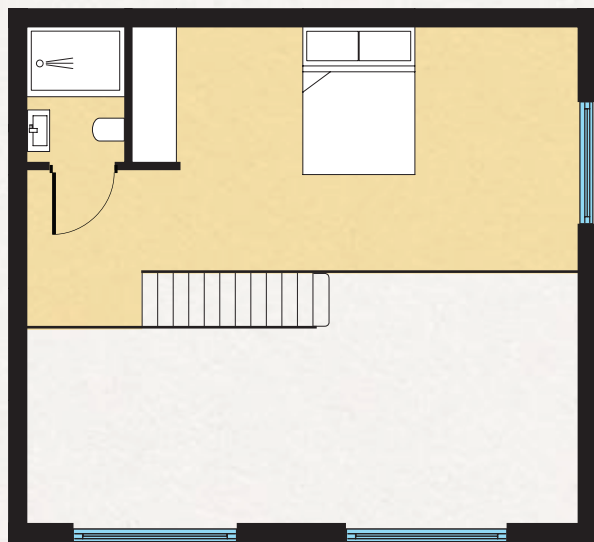
HOME 14

2 BEDROOM - HOUSE WITH MEZZANINE

Total: 888 SqFt + Private Garden

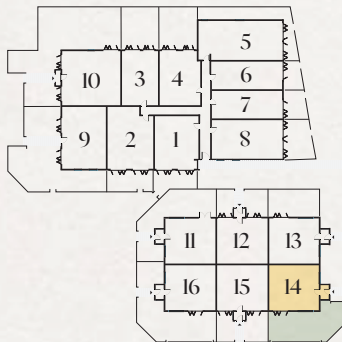


GROUND LEVEL



MEZZANINE LEVEL

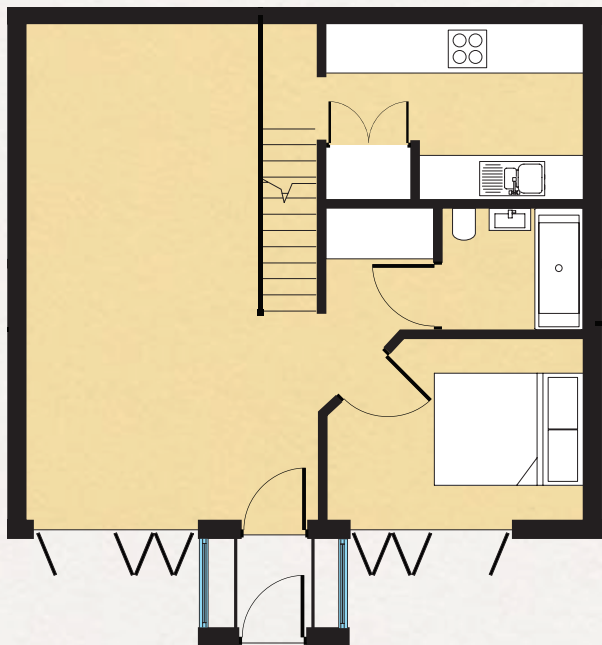
| ROOM | F T | | |
|-----------------------|------|---|------|
| GROUND & MEZZANINE | 22.0 | X | 25.5 |
| LIVING/DINING/KITCHEN | 10.8 | X | 25.5 |
| BEDROOM 1 / EN-SUITE | 10.8 | X | 25.5 |
| BEDROOM 2 | 10.5 | X | 10.8 |



HOME 15

2 BEDROOM - HOUSE WITH MEZZANINE

Total Area: 888 SqFt + Private Garden

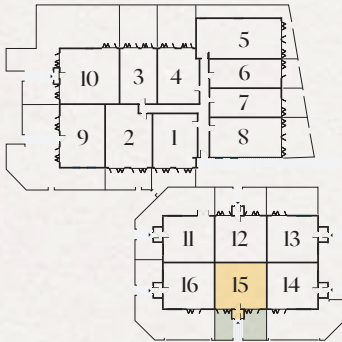


GROUND LEVEL



MEZZANINE LEVEL

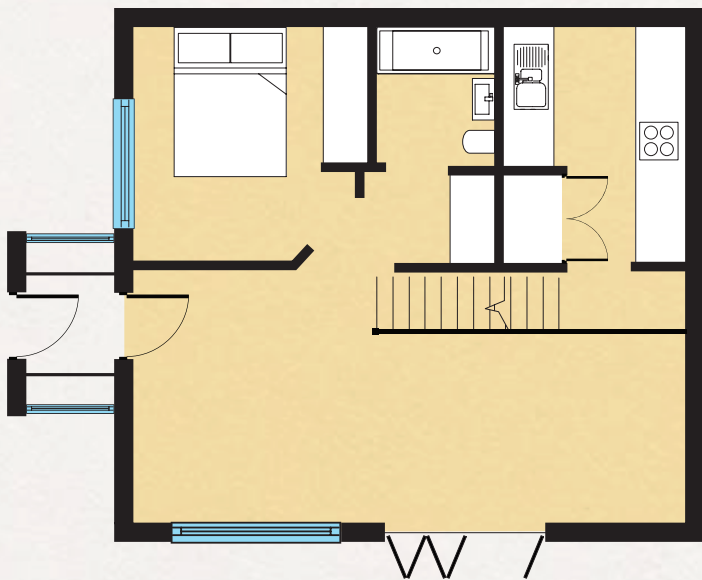
| ROOM | F T | | |
|-----------------------|------|---|------|
| GROUND & MEZZANINE | 22.0 | X | 25.5 |
| LIVING/DINING/KITCHEN | 10.8 | X | 25.5 |
| BEDROOM 1 / EN-SUITE | 10.8 | X | 25.5 |
| BEDROOM 2 | 10.5 | X | 10.8 |



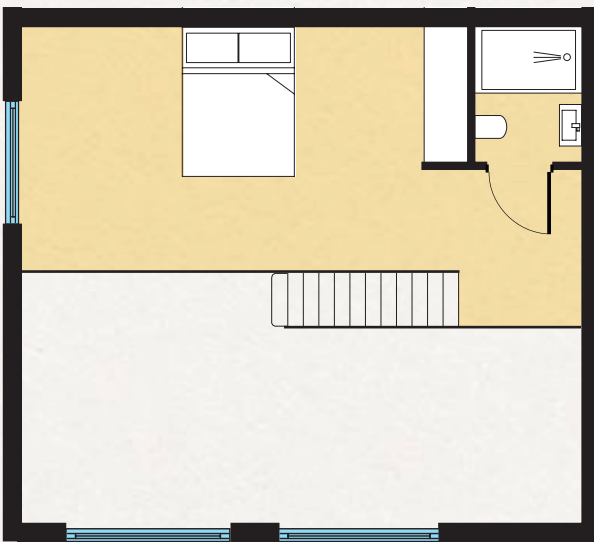
HOME 16

2 BEDROOM - HOUSE WITH MEZZANINE

Total: 888 SqFt + Private Garden

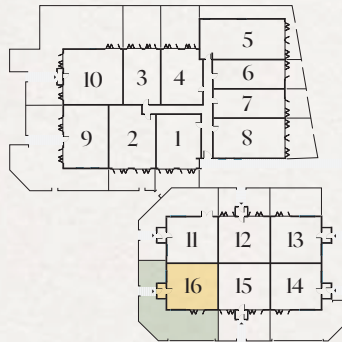


GROUND LEVEL

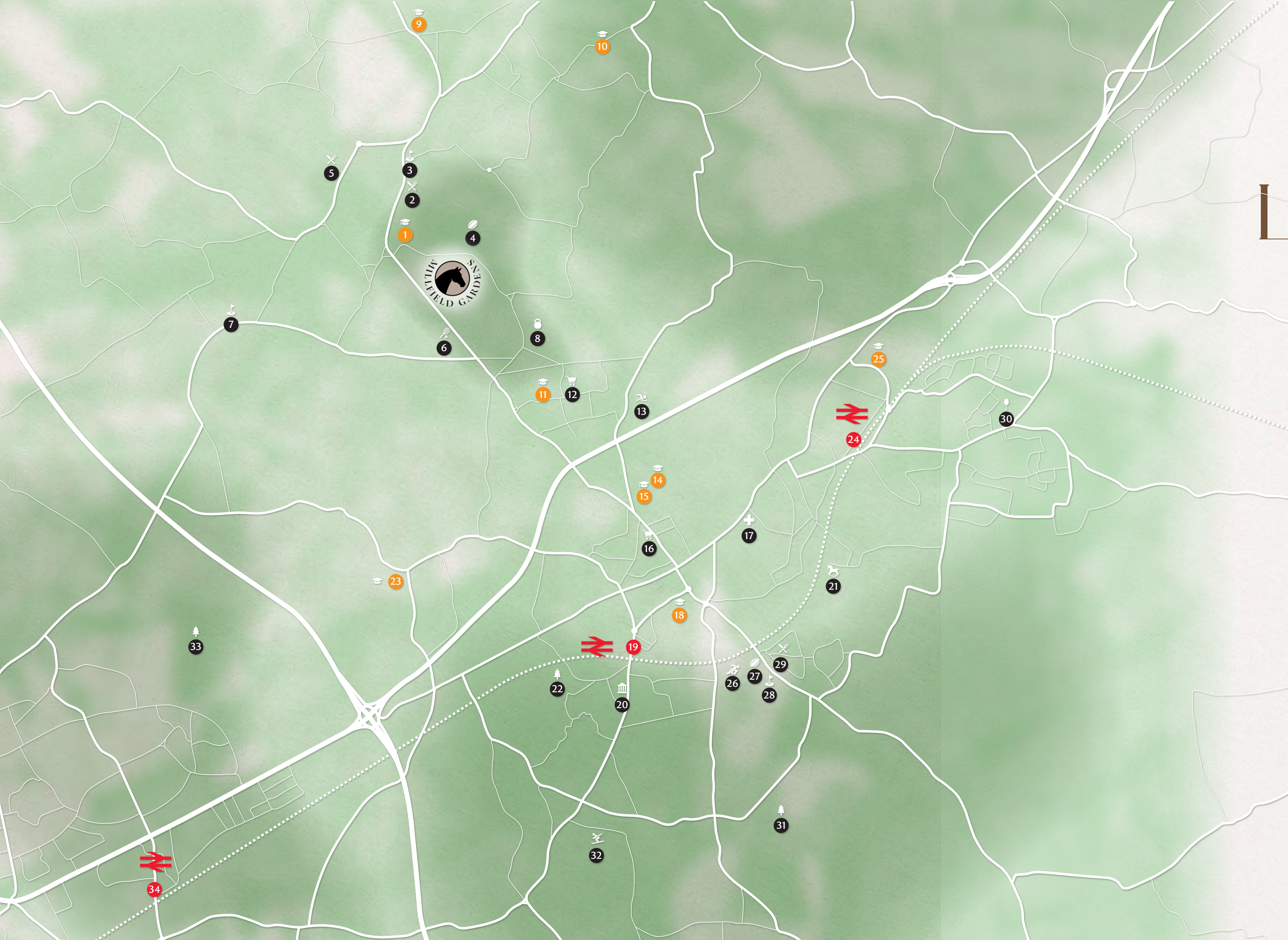


MEZZANINE LEVEL

| ROOM | F T | | |
|-----------------------|------|---|------|
| GROUND & MEZZANINE | 22.0 | X | 25.5 |
| LIVING/DINING/KITCHEN | 10.8 | X | 25.5 |
| BEDROOM 1 / EN-SUITE | 10.8 | X | 25.5 |
| BEDROOM 2 | 10.5 | X | 10.8 |



DESIRED LOCATION



- | | |
|--|---|
| 1 BENTLEY ST PAUL'S C OF E PRIMARY SCHOOL | 17 BRENTWOOD HOSPITAL |
| 2 DUSK RESTAURANT | 18 BRENTWOOD URSULINE CONVENT HIGH SCHOOL |
| 3 BENTLEY GOLF CLUB | 19 BRENTWOOD STATION |
| 4 THE OLD BRENTWOODS SPORTS CLUB & BRENTWOOD EELS RUGBY CLUB | 20 BRENTWOOD MUSEUM |
| 5 ALEC'S RESTAURANT | 21 THE TREEHOUSE CLUB |
| 6 BENTLEY TENNIS CLUB | 22 WARLEY COUNTRY PARK |
| 7 BRENTWOOD GOLF CLUB | 23 ST PETER'S C OF E VOLUNTARY AIDED PRIMARY SCHOOL |
| 8 FITNESS FACTORY | 24 SHENFIELD STATION |
| 9 KELVEDON HATCH COMMUNITY PRIMARY SCHOOL | 25 SHENFIELD HIGH SCHOOL |
| 10 DODDINGHURST INFANT SCHOOL | 26 BRENTWOOD BOWLING CLUB |
| 11 LARCHWOOD PRIMARY SCHOOL | 27 BRENTWOOD RUGBY CLUB |
| 12 CO-OP | 28 HARTSWOOD GOLF CLUB |
| 13 THE BRENTWOOD CENTRE SWIMMING, SPORTS & ENTERTAINMENT COMPLEX | 29 MASONS RESTAURANT |
| 14 BECKET KEYS C OF E SCHOOL | 30 THE CHEQUERS |
| 15 GROVE HOUSE SCHOOL | 31 GRUFFALO TRAIL |
| 16 SAINSBURYS | 32 BRENTWOOD PARK SKI & SNOWBOARD CENTRE |
| | 33 DAGNAM PARK |
| | 34 HAROLD WOOD STATION |



OUR FUTURE BRIGHT STARS

Young families are spoilt for choice when it comes to good schools in the neighbourhood.

Within less than two miles there are five primary schools including two Church of England schools.

The nearest, Bentley St Paul's Church of England primary school, is just 0.1 miles away and the furthest, five-star Ofsted-rated St Peter's Church of England primary school, is 1.94 miles away. Two of the other primaries are also five-star rated.

Just as importantly, the area is well served with secondary schools such as Shenfield High School, an academy school; Brentwood Ursuline Convent High School for girls, with a mixed sixth form.



Bentley St Paul's C of E
Voluntary Aided
Primary School

Ofsted: ★ ★ ★
📍 0.1 miles

Kelvedon Hatch
Community
Primary School

Ofsted: ★ ★ ★
📍 1.3 miles

St Peter's C of E
Voluntary Aided
Primary School

Ofsted: ★ ★ ★ ★ ★
📍 1.94 miles

Brentwood Ursuline
Convent High
Secondary School

Ofsted: ★ ★ ★
📍 2.66 miles

Larchwood
Primary
School

Ofsted: ★ ★ ★ ★ ★
📍 1.26 miles

Doddinghurst
Infant School
Primary School

Ofsted: ★ ★ ★ ★ ★
📍 1.72 miles

Becket Keys
C of E Free School
Secondary School

Ofsted: ★ ★ ★ ★ ★
📍 2.08 miles

Shenfield
High School
Secondary School

Ofsted: ★ ★ ★
📍 2.81 miles

TRAVEL

With Brentwood just a 10-minute drive away, Millfield Park has the benefit of superb rail and road connections.

It's on the Liverpool Street line between London and Norwich but thanks to the new Elizabeth Line it will get peak-time trains to Canary Wharf and as far west as Paddington.

Brentwood is also minutes from the A12, going north east to Chelmsford and up to the East Anglia coast or west to Romford and East London.

It's also close to the M25 with connections to the M11 for Stansted airport and Cambridge; the A127 to Southend and its airport, and every major motorway in the South East from the M25.



FLY AWAY

SOUTHEND
35 MINUTES

STANSTED
40 MINUTES



ON THE ROAD

M25
JUNCTION 28
10 MINUTES

A12
10 MINUTES









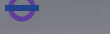








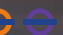


CATCH A BUS

BRENTWOOD
TOWN CENTRE
MON TO SUN - 7AM TO 7PM
20 MINUTES

MAKE THE CONNECTION



| | |
|----------------|---|
| SHENFIELD |  |
| 5 MINUTES | |
| BRENTWOOD |  |
| HAROLD WOOD |  |
| 4 MINUTES | |
| GIDEA PARK |  |
| 7 MINUTES | |
| ROMFORD |   |
| 9 MINUTES | |
| CHADWELL HEATH |  |
| 13 MINUTES | |
| GOODMAYES |  |
| 15 MINUTES | |
| SEVEN KINGS |  |
| 17 MINUTES | |
| ILFORD |  |
| 20 MINUTES | |
| MANOR PARK |  |
| 23 MINUTES | |
| FOREST GATE |  |
| 26 MINUTES | |
| MARYLAND |  |
| 30 MINUTES | |
| STRATFORD |    |
| 30 MINUTES | |
| WHITECHAPEL |   |
| 58 MINUTES | |
| LIVERPOOL ST |    |
| 40 MINUTES | |



ALL NEW:
ELIZABETH LINE
WITH DIRECT
TRAINS TO
HEATHROW
& BEYOND



SPECIFICATION SUPERB FINISH & DETAIL



GENERAL

- Private Gated entrance & parking.
- Fire and smoke alarms to all homes.
- Smoke Extraction system.
- All door furniture in brushed chrome.
- Electric heating to all homes with thermostatic control, hot water cylinder.
- All homes fitted with CAT6 cabling TV and USB points to lounge and main bedroom.
- BiFold Doors / French Doors.
- Designer glass balustrades on Mezzanines.

KITCHEN

- Contemporary white high gloss designer german kitchens.

All kitchens to include:

- Washing machine.
- Dishwasher.
- Microwave.
- Fridge/freezer.
- Oven and hob with extractor.

- Appliances are a combination of Bosch and Candy manufacture.
- Work tops in stone with upstands.

BATHROOMS & ENSUITES

- White sanitary ware with concealed cisterns.
- Chrome plated taps with handset shower.
- Fully tiled.
- Chrome heated towel rail.
- LED contemporary lighting.

BEDROOMS

- Engineered wooden floor covering throughout with carpets to bedrooms.
- Fitted wardrobes to bedrooms.

OUTDOOR SPACE

- Stunning communal parkland where graceful horses roam.
- Private gardens and pond.

GUARANTEE

- All properties come with 10 year ICW Warranty.





ONGAR ROAD

A12

M25, J28

FIND US
ASHWELLS ROAD,
PILGRIMS HATCH,
BRENTWOOD
CM15 9ST

meg
PROPERTY
GROUP

INFO@JUSTNEW.CO.UK
01992 845 699



JUST NEW HOMES

IMPORTANT NOTICE: WHILST EVERY CARE HAS BEEN TAKEN TO ENSURE ACCURACY THESE PARTICULARS DO NOT CONSTITUTE PART OF ANY OFFER OR CONTRACT AND THE RIGHT TO CHANGE PLANS, SPECIFICATIONS AND MATERIALS IS RESERVED. ALL MEASUREMENTS ARE GIVEN AS A GUIDE ONLY. PURCHASERS ARE ADVISED TO CHECK PLOT SPECIFIC DIMENSIONS AND SPECIFICATIONS PRIOR TO RESERVATION. NO LIABILITY CAN BE ACCEPTED FOR ANY ERRORS ARISING THERE FROM. DEVELOPMENT IMAGES ARE INDICATIVE AND MAY VARY. SPECIFICATIONS FOR THIS DEVELOPMENT MAY NOT INCLUDE FIXTURES, FITTINGS AND FURNISHINGS SHOWN IN THE PHOTOGRAPHS AND ILLUSTRATIONS. FEATURES AND FINISHES ARE SHOWN FOR ILLUSTRATIVE PURPOSES ONLY AND ARE NOT INTENDED TO FORM PART OF ANY CONTRACT OR WARRANTY. NO RESPONSIBILITY IS TAKEN FOR ANY OTHER ERROR, OMISSION, OR MISSTATEMENTS IN THESE PARTICULARS. NEITHER THE VENDOR NOR ITS AGENTS MAKE OR GIVE, WHETHER IN THESE PARTICULARS, DURING THE NEGOTIATIONS OR OTHERWISE, ANY REPRESENTATION OR WARRANTY IN RELATION TO THIS PROPERTY.