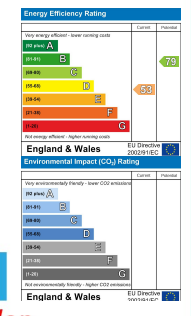


**28 St. Clements Road, Neyland, Milford Haven, Pembrokeshire, SA73 1SH**

- Detached Dormer Bungalow
- Far Reaching Estuary Views
- No Onward Chain
- Raised Decking Area
- Gas Central Heating
- Four Bedrooms
- Close to Local Amenities
- Off Road Parking
- Upvc Double Glazing
- EPC E

**Offers In The Region Of £340,000**

COMPUTER-LINKED OFFICES THROUGHOUT WEST WALES and Associated office in Mayfair, London

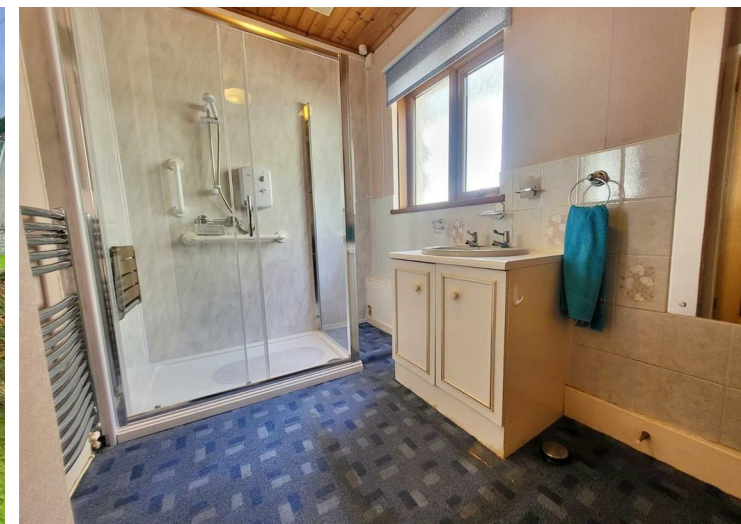


VIEWING: By appointment only via the Agents.  
TENURE: We are advised Freehold  
SERVICES: We have not checked or tested any of the services or appliances at the property.  
COUNCIL TAX: Band 'E'

ref: SLS/CPS/05/09/24  
FACEBOOK & TWITTER  
Be sure to follow us on Twitter: @ WWProps  
<https://www.facebook.com/westwalesproperties/>

WE WOULD LIKE TO POINT OUT THAT OUR PHOTOGRAPHS ARE TAKEN WITH A DIGITAL CAMERA WITH A WIDE ANGLE LENS. These particulars have been prepared in all good faith to give a fair overall view of the property. If there is any point which is of specific importance to you, please check with us first, particularly if travelling some distance to view the property. We would like to point out that the following items are excluded from the sale of the property: Fitted carpets, curtains and blinds, curtain rods and poles, light fittings, sheds, greenhouses - unless specifically specified in the sales particulars. Nothing in these particulars shall be deemed to be a statement that the property is in good structural condition or otherwise. Services, appliances and equipment referred to in the sales details have not been tested, and no warranty can therefore be given. Purchasers should satisfy themselves on such matters prior to purchase. Any areas, measurements or distances are given as a guide only and are not precise. Room sizes should not be relied upon for carpets and furnishings.

COMPUTER-LINKED OFFICES THROUGHOUT WEST WALES and Associated office in Mayfair, London



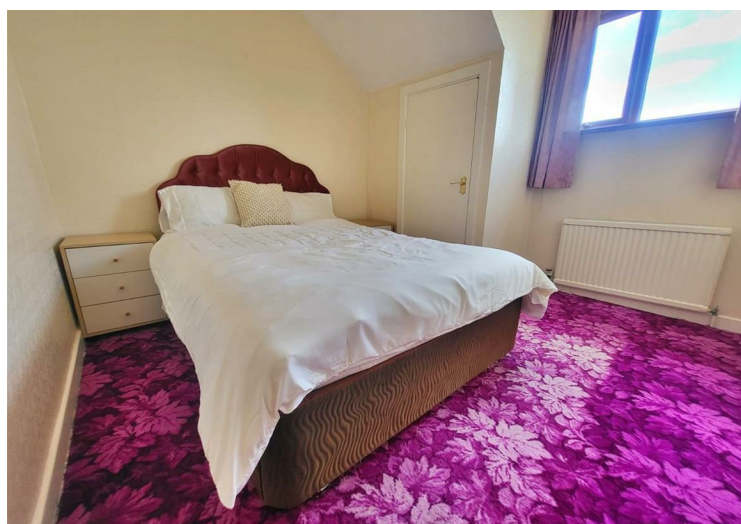
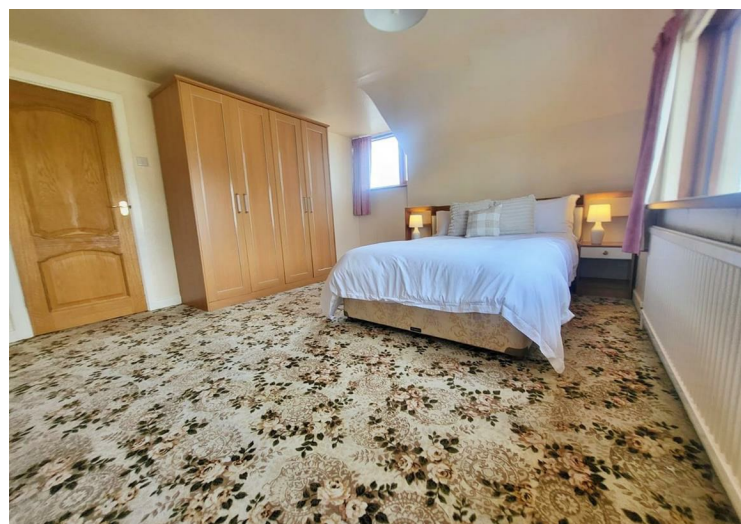
A well proportioned detached four bedroom dormer bungalow situated in a desirable road on the edge of Neyland boasting stunning, far-reaching Estuary views from most rooms. The property affords a degree of flexibility in how the rooms are used, with potential to adapt the bedrooms and utility room as desired. This ideally located bungalow is close to the waterfront, marina, local shops, doctors surgery and the beautiful Westfield Pill nature reserve with miles of waterside walks and cycle paths.

The accommodation briefly comprises; Entrance porch, hallway, ground floor double aspect bedroom with spectacular views of the waterway, 15ft lounge with laid wooden floor, gas fire and bay window, kitchen with fitted units and a walk in pantry, a dining area with a gas fire and direct access out to the decked area and garden. utility room previously converted from a garage, shower room and W.C to the ground floor.

The first floor offers a master bedroom with far reaching double aspect estuary views, two further bedrooms both with unrestricted estuary views and built in storage spaces. The loft spaces offer walk in storage on both sides of the house.

Externally, the property has off-road parking to the front for two vehicles. A lawned garden, with well-placed mature shrubs and trees, leads from the front of the property along the right-hand side and opens into the rear, where there is also a raised decking area perfect for summer bbq and drinks. The garden exposes you to the beautiful Estuary views from every vantage point and also includes a garden shed.

The property also boasts gas central heating and UPVC double glazing throughout. 28 St Clements Road is perfectly located and should definitely be viewed to fully appreciate all it has to offer.



### DIRECTIONS

From our Milford Haven office proceed towards Haverfordwest and on reaching the Horse and Jockey public house turn right, at the second roundabout follow the signs for the Marina. Travel through the High Street, turn right into St Clements Road where you will find the property on your left hand side. What3words#vibes.sapping.powder

See our website [www.westwalesproperties.co.uk](http://www.westwalesproperties.co.uk) in our TV channel to view our location videos about the area.