

WE WOULD LIKE TO POINT OUT THAT OUR PHOTOGRAPHS ARE TAKEN WITH A DIGITAL CAMERA WITH A WIDE ANGLE LENS. These particulars have been prepared in all good faith to give a fair overall view of the property. If there is any point which is of specific importance to you, please check with us first, particularly if travelling some distance to view the property. We would like to point out that the following items are excluded from the sale of the property: Fitted carpets, curtains and blinds, curtain rods and poles, light fittings, sheds, greenhouses - unless specifically specified in the sales particulars. Nothing in these particulars shall be deemed to be a statement that the property is in good structural condition or otherwise. Services, appliances and equipment referred to in the sales details have not been tested, and no warranty can therefore be given. Purchasers should satisfy themselves on such matters prior to purchase. Any areas, measurements or distances are given as a guide only and are not precise. Room sizes should not be relied upon for carpets and furnishings.

COMPUTER-LINKED OFFICES THROUGHOUT WEST WALES and Associated office in Mayfair, London

12 Victoria Place, Haverfordwest, Pembrokeshire,
SA61 2LP
EMAIL: haverfordwest@westwalesproperties.co.uk

TELEPHONE: 01437 762626

01437 762626
www.westwalesproperties.co.uk

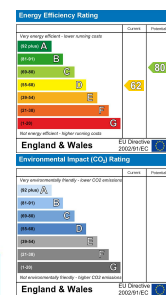


The Chapel & Lleitty View, Fachelich, St Davids, Haverfordwest, Pembrokeshire, SA62 6QL

- Two Charming Detached Cottages
- Stunning Mountain/Rural Views
- Character Features
- Brilliant Investment
- Short Drive to St Davids City
- Ideal Multi-Generational Property
- Hamlet Location/Near St Davids
- Low Maintenance Garden
- Air Source Heat Pump
- EPC Rating: D and D

Price £600,000

COMPUTER-LINKED OFFICES THROUGHOUT WEST WALES and Associated office in Mayfair, London



A brilliant opportunity to acquire but two delightful stone cottages, situated in the rural hamlet of Fachelich, St Davids. Just a short drive to St Davids and close to coastal village of Solva, the properties would make brilliant investments. Boasting lovely character original features, the cottages enjoy idyllic views overlooking Carnhedryn and the surrounding countryside. Ideal for multi-generational living, the cottages would make great holiday lets or holiday homes. With lovely country walks right on your doorstep, viewing is highly recommended to appreciate their idyllic location.

The Chapel:

The accommodation briefly comprises: entrance hallway, open plan living/kitchen/diner with a feature stone fireplace and oak mantle, character beams and vaulted ceilings. The ground floor also accommodates the bathroom and a bedroom. Wooden stairs lead up to the first floor, which is home to the master bedroom with a mezzanine.

Externally, the cottage offers a low-maintenance garden with a patio seating area, which is a perfect place to relax. From the property, you can also enjoy stunning rural views towards the countryside. The property benefits from double-glazing and an Air Source Heat Pump.

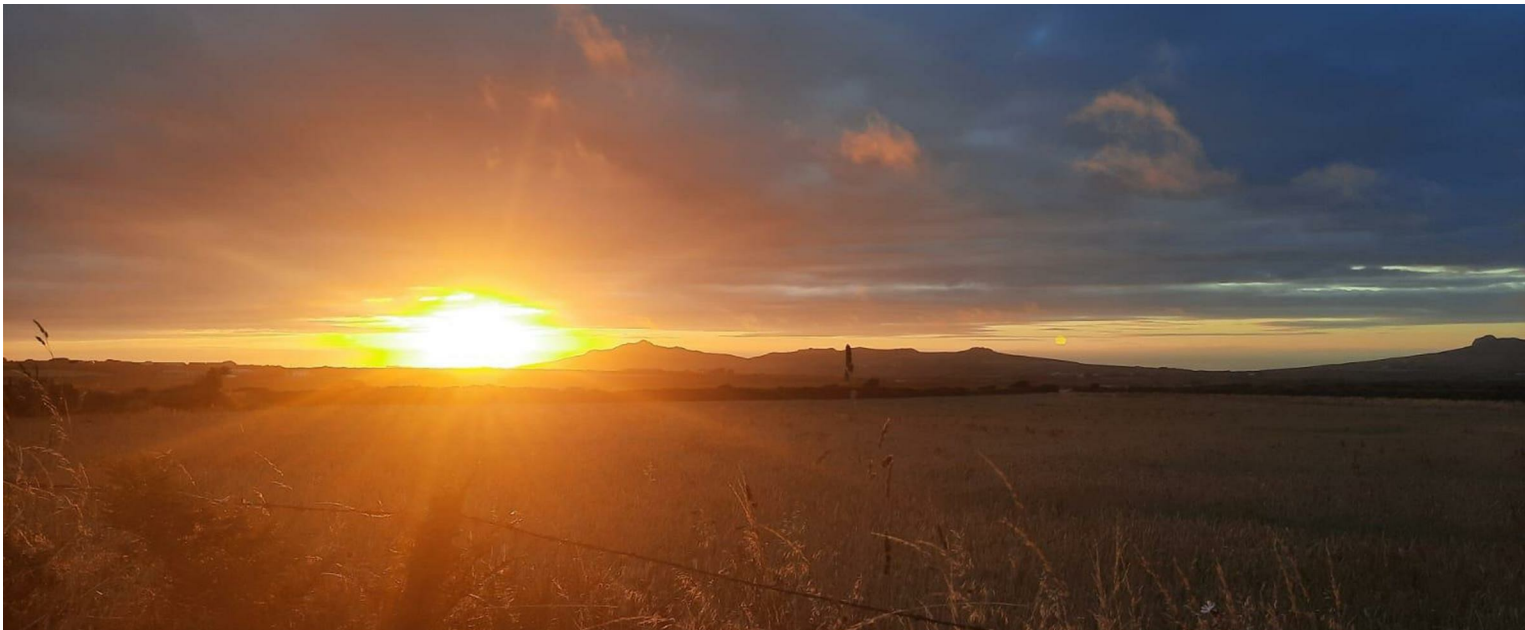
Lleitty View:

The accommodation offers a seamless blend of traditional charm and modern convenience, and provides a warm and welcoming atmosphere throughout. The layout briefly; entrance hallway with utility area, a open plan living/kitchen/diner is the heart of the home, with beautiful exposed stone and a feature fireplace with log burning stove. The modern kitchen has solid wood worktops, Belfast sink, and is fitted with a range of appliances. Further accommodation includes; the contemporary bathroom, and three bedrooms.

Externally, a shared driveway leads up to the property with a gravelled parking area. A lawned garden and patios offer space for outside seating, where you can sit and enjoy those country views. A stone outbuilding also provides secure outside storage.

St Davids is a popular Cathedral City which is situated on the North Pembrokeshire Coastline some fifteen miles or from the Market Town of Haverfordwest. St Davids has the benefit of numerous amenities and facilities which briefly include Secondary and Primary Schools, Chapels, Banks, Public Houses, Restaurants, Hotels, Art Galleries, Gift Shops, Supermarket, Dentists's surgeries, Pharmacy etc.

Renowned as Britain's smallest city, at the heart of which stands the historic Cathedral and ruined Bishops Palace, St Davids is a vibrant coastal community, situated on the most westerly tip of Wales. Lying within the Pembrokeshire Coast National Park, St Davids is a focal point on one of the most spectacular and unspoilt coastlines in the country, famous for the coastal path.



DIRECTIONS

From Haverfordwest, take the A487 out of town and follow road for approx 14 miles. Passing through Newgale and Solva continue to follow the A487. Turn right onto Fachelich, and as you come into the hamlet the driveway to the property is on the left hand side. What/Three/Words:///backyards.informer.biggest

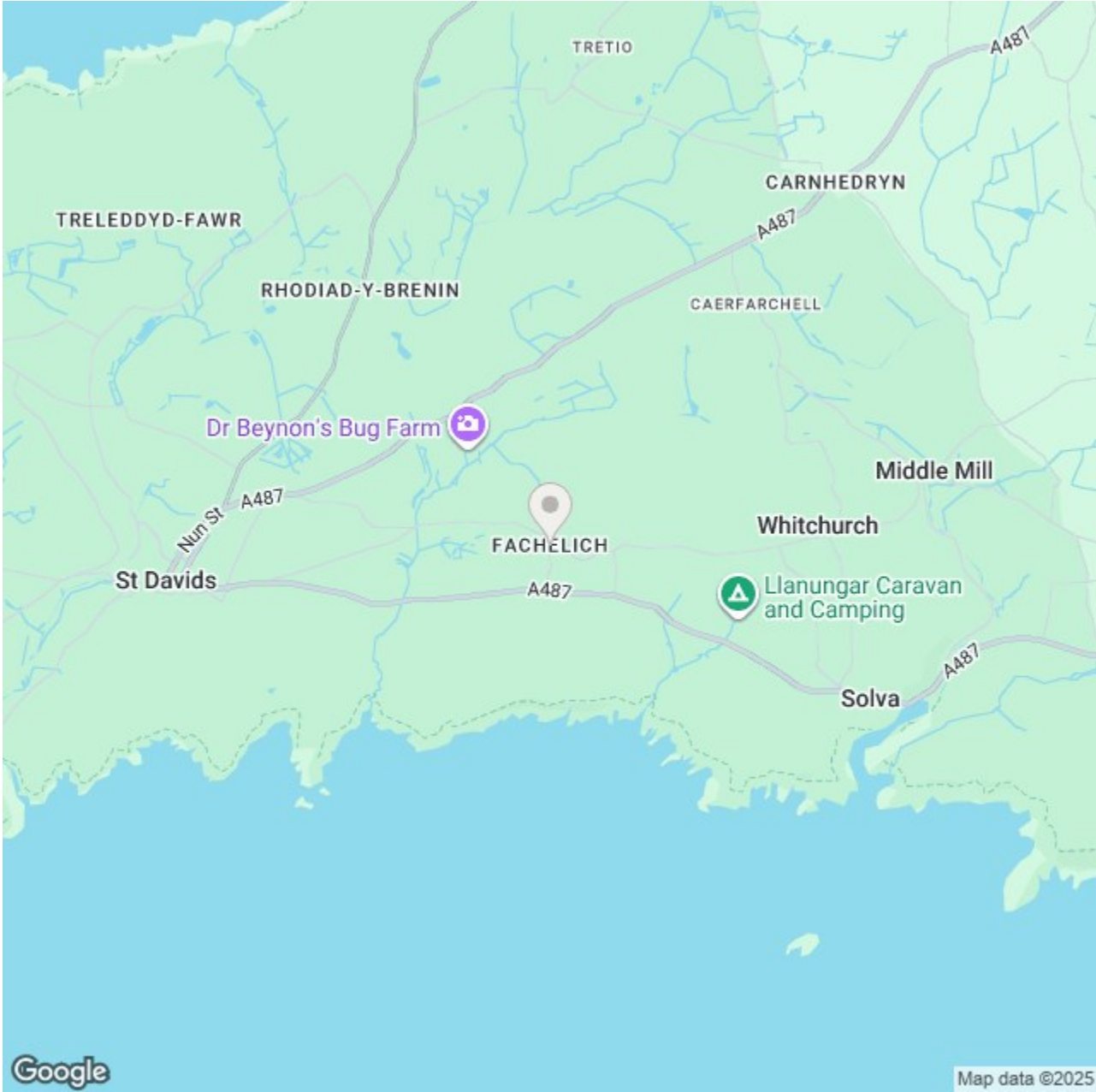
GENERAL INFORMATION

VIEWING: By appointment only via the Agents.
TENURE: We are advised Freehold
SERVICES: We have not checked or tested any of the services or appliances at the property.
COUNCIL TAX: Band 'C & E'
HEATING: Air source heat pump and underfloor heating

ref: CH/ LLE/ AUG/ 25/Ok EJL

FACEBOOK & TWITTER
Be sure to follow us on Twitter: @ WWProps
<https://www.facebook.com/westwalesproperties/>

LOCATION AERIAL VIEW



The Chapel



