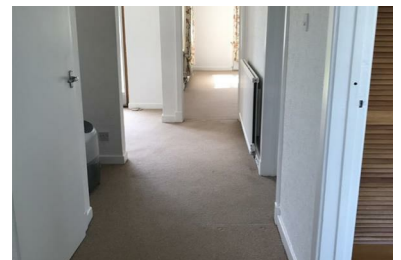




**Beverley Hills* Lamber Hill, Portfield Gate,
Haverfordwest, Pembrokeshire, SA62 3HT**

A spacious semi detached 2 bedroom bungalow, comprises entrance hallway, spacious living room, 2nd reception room, 2 double bedrooms with built in wardrobes. Family bathroom with shower over bath. Kitchen and utility room. Garage and off road parking. Spacious garden. Unfurnished. Oil Heating. Rent £795 pcm and deposit £895.

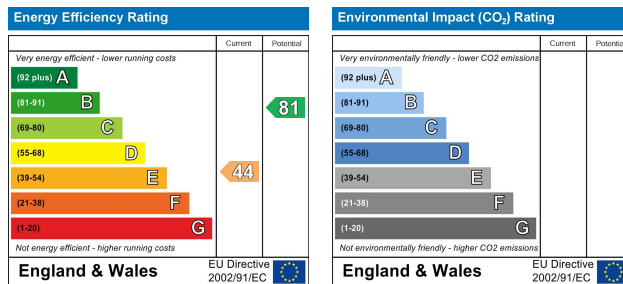


- Semi Detached Bungalow
- 2 Reception Rooms
- Large Enclosed Garden
- EPC Band E
- 2 Double Bedrooms
- Garage
- Oil Heating

RENT: £795 PCM

DEPOSIT: £895

40 High Street, Haverfordwest, Pembrokeshire, SA61 2DA info@westwaleshomerentals.co.uk



The particulars are set out as a general outline only for the guidance of intended purchasers or lessees, and do not constitute, any part of a contract. Nothing in these particulars shall be deemed to be a statement that the property is in good structural condition or otherwise nor that any of the services, appliances, equipment or facilities are in good working order. Purchasers should satisfy themselves of this prior to purchasing.

COMPUTER-LINKED OFFICES THROUGHOUT WEST WALES and Associated Office in Mayfair, London