



This floor plan has been designed as an overall guide to identify room names and positions within the building. Actual sizes, windows or fittings may be inaccurately sized or positioned as these are included for identification purposes only. This is not a surveying drawing and is not to scale. Floor plan only for info.

VIEWING: By appointment only via the Agents.

TENURE: We are advised Freehold.

SERVICES: We have not checked or tested any of the services or appliances at the property.

TAX: Band B/C

We would respectfully ask you to call our office before you view this property internally or externally

JETH/ESL/05/23/ok JETH

FACEBOOK & TWITTER

Be sure to follow us on Twitter: @ WWProps

<https://www.facebook.com/westwalesproperties/>

WE WOULD LIKE TO POINT OUT THAT OUR PHOTOGRAPHS ARE TAKEN WITH A DIGITAL CAMERA WITH A WIDE ANGLE LENS. These particulars have been prepared in all good faith to give a fair overall view of the property. If there is any point which is of specific importance to you, please check with us first, particularly if travelling some distance to view the property. We would like to point out that the following items are excluded from the sale of the property: Fitted carpets, curtains and blinds, curtain rods and poles, light fittings, sheds, greenhouses - unless specifically specified in the sales particulars. Nothing in these particulars shall be deemed to be a statement that the property is in good structural condition or otherwise. Services, appliances and equipment referred to in the sales details have not been tested, and no warranty can therefore be given. Purchasers should satisfy themselves on such matters prior to purchase. Any areas, measurements or distances are given as a guide only and are not precise. Room sizes should not be relied upon for carpets and furnishings.

COMPUTER-LINKED OFFICES THROUGHOUT WEST WALES and Associated office in Mayfair, London

12 Victoria Place, Haverfordwest, Pembrokeshire, SA61 2LP

EMAIL: haverfordwest@westwalesproperties.co.uk

TELEPHONE: 01437 762626

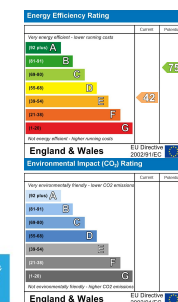


Myrtle Hill Farm Dreenhill, Haverfordwest, Pembrokeshire, SA62 3XH

- Detached Farmhouse
- Sold With Tenants In Situation
- Excellent Business Venture
- Countryside Views To Rear
- Close To Haverfordwest
- Five Residential Units
- Off Road Parking
- Communal Gardens
- Character Features
- EPC Rating: E/E/E/E/D

Offers Around £550,000

COMPUTER-LINKED OFFICES THROUGHOUT WEST WALES and Associated office in Mayfair, London



12 Victoria Place, Haverfordwest, Pembrokeshire, SA61 2LP
EMAIL: haverfordwest@westwalesproperties.co.uk TELEPHONE: 01437 762626

The Agent that goes the Extra Mile





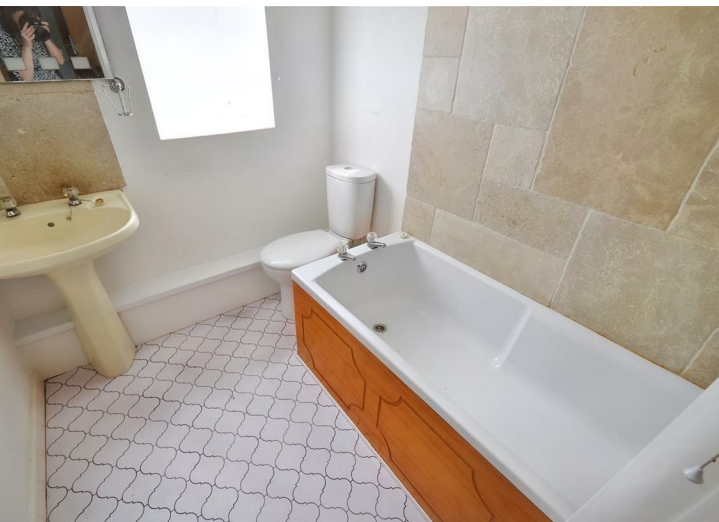
A rare opportunity to purchase a traditional farmhouse style property which has been converted into five separate residential units but has the potential to be converted back to one residential dwelling with two self contained annexes in the popular rural area of Dreenhill, close to Haverfordwest town. The property is being sold with tenants in situ at four of the units, with one vacant unit. The accommodation offers a range of two, three and four bedroom properties.

The property is set within its own grounds approximately 2.11 acres with well maintained lawned gardens to the front and side. To the rear is a communal car park area accessed along a private driveway, providing ample off road parking. Countryside views of the surrounding fields can be enjoyed to the rear of the property.

Viewing is highly recommended!

The market town of Haverfordwest has numerous facilities and amenities on offer, which include a good range of shops, retail parks, primary and secondary schools, sixth form college, hospital, main line train station, new leisure centre/swimming pool, cinema, restaurants, pubs etc.

The beautiful Pembrokeshire coast is only 4 miles to the south west, at the long sandy beach of Broad Haven and lovely fishing village of Little Haven, and the famous Pembrokeshire Coastal Path.



DIRECTIONS

From the Haverfordwest Office take the B4327 in the direction of Dale, follow the road for approximately 2 miles until you reach Dreenhill. Proceed up the hill, and you will see Myrtle Hill House on your left hand side. What3Words: fired.ballooned.blocks.

See our website www.westwalesproperties.co.uk in our TV channel to view our location videos about the area.