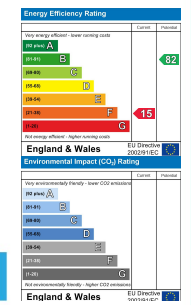


**Heathermere, 17 Marine Road, Broad Haven, Haverfordwest, Pembrokeshire, SA62 3JR**

- Period Property
- Driveway
- Income Potential
- Garage
- No Onward Chain
- Annex
- Sought After Location
- Ideal Renovation
- Garden
- EPC G

**Offers In Excess Of £500,000**

COMPUTER-LINKED OFFICES THROUGHOUT WEST WALES and Associated office in Mayfair, London



VIEWING: By appointment only via the Agents.  
TENURE: We are advised Freehold  
SERVICES: We have not checked or tested any of the services or appliances at the property.  
COUNCIL TAX: Band 'E'

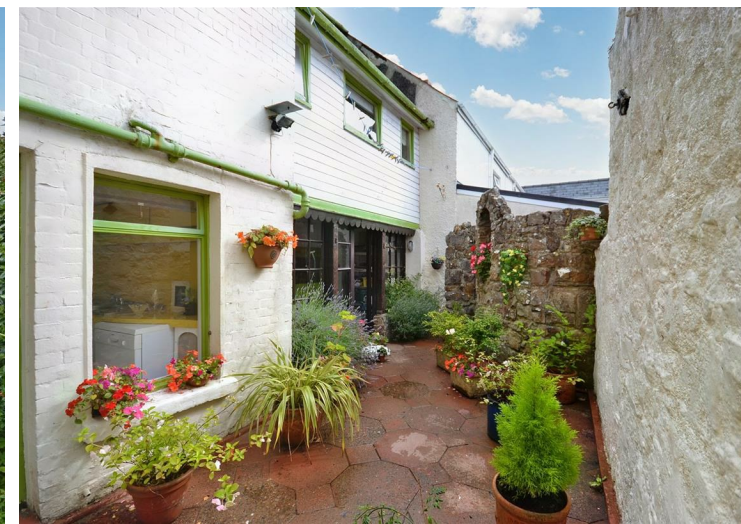
ref: JDE/07/23/CPS07/23/JETHOK These are Draft details and should not be relied on. Please request an approved copy from our office before booking a viewing.

FACEBOOK & TWITTER  
Be sure to follow us on Twitter: @ WWProps  
<https://www.facebook.com/westwalesproperties/>

WE WOULD LIKE TO POINT OUT THAT OUR PHOTOGRAPHS ARE TAKEN WITH A DIGITAL CAMERA WITH A WIDE ANGLE LENS. These particulars have been prepared in all good faith to give a fair overall view of the property. If there is any point which is of specific importance to you, please check with us first, particularly if travelling some distance to view the property. We would like to point out that the following items are excluded from the sale of the property: Fitted carpets, curtains and blinds, curtain rods and poles, light fittings, sheds, greenhouses - unless specifically specified in the sales particulars. Nothing in these particulars shall be deemed to be a statement that the property is in good structural condition or otherwise. Services, appliances and equipment referred to in the sales details have not been tested, and no warranty can therefore be given. Purchasers should satisfy themselves on such matters prior to purchase. Any areas, measurements or distances are given as a guide only and are not precise. Room sizes should not be relied upon for carpets and furnishings.

COMPUTER-LINKED OFFICES THROUGHOUT WEST WALES and Associated office in Mayfair, London

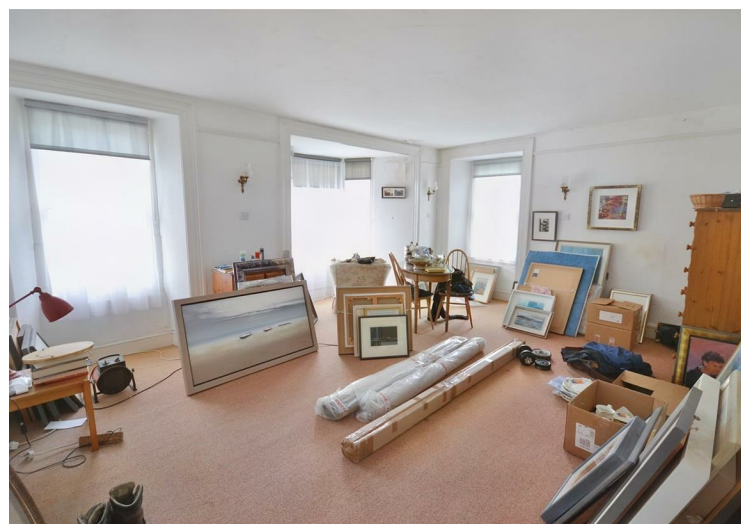




Heathermere is an extensive stone period property offering sizeable and versatile living accommodation and is ideal for multi generational living, situated in the sought after area of Broad Haven and just a short walk to the sandy beach. The property comprises; vestibule, entrance hall, lounge, sitting room, kitchen diner with aga, utility room, and larder to the ground floor, the first floor has four bedrooms, family bathroom and W.C. another flight of stairs take you to a possible four further bedrooms.. The property has lots of period features such as, picture rails, high ceilings and American oak floor in the hallway. Heathermere also has an attached Annex which offers a kitchen/diner and conservatory to the ground floor and a living room, two bedrooms, study and bathroom on the first floor.

Externally there is ample off road parking on the gravelled driveway, garage, a beautiful mature enclosed garden, surrounded with herbaceous borders. To the rear is a pretty courtyard garden with access from both properties.

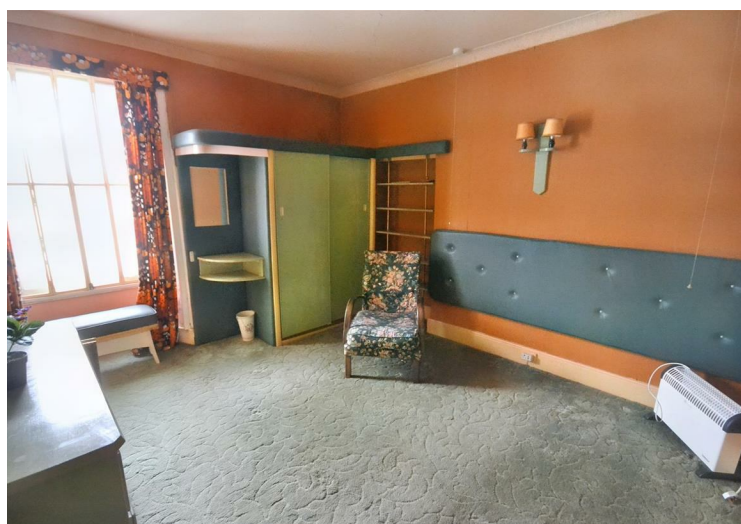
This delightful property has so much potential and should be viewed to appreciate all it has to offer.



The village of Broad Haven is set within the beautiful Pembrokeshire Coast National Park, a designated area of outstanding natural beauty. The long sandy beach is particularly popular with 'bucket and spade' and boating enthusiasts, whilst walkers and bird-watchers appreciate the coastal path, which gives access to some spectacular scenery. The village has local facilities such as a post office, shops, pubs and restaurants. The property is within walking distance of the local primary school.

The county town of Haverfordwest lies 6 miles to the east, and provides a wide range of amenities, including mainline train station, hospital, supermarkets, new leisure centre and swimming pool, cinema, sixth form college, retail parks, shops etc. See our website [www.westwalesproperties.co.uk](http://www.westwalesproperties.co.uk) for our own TV Channel with Location Films of the area.

## GENERAL INFORMATION FREEHOLD.



## DIRECTIONS

From our Haverfordwest office proceed up the High Street, into Dew Street following the one way system round to the right. Take the Broad Haven road straight ahead, passing Tesco Stores and continuing on out of Haverfordwest. On entering Broad Haven follow the road past the beach and take the left turning opposite the slipway on to Marine Road, then take the second right, the property is the first on the left. What3words processor.outboard.frown

See our website [www.westwalesproperties.co.uk](http://www.westwalesproperties.co.uk) in our TV channel to view our location videos about the area.